

WW-7
8-30-06



West Virginia Department of Environmental Protection
Office of Oil and Gas
WELL LOCATION FORM: GPS

API: 47-033-4286 WELL NO.: Lowndes #6
 FARM NAME: Lowndes (Goff)
 RESPONSIBLE PARTY NAME: PDC Mountaineer, LLC
 COUNTY: Harrison DISTRICT: Clark
 QUADRANGLE: Wolf Summit
 SURFACE OWNER: Harrison Co. Board of Education (TM 305 Parcel 32.1)
 ROYALTY OWNER: Laura Goff Davis et al
 UTM GPS NORTHING: 4347442
 UTM GPS EASTING: 552071 GPS ELEVATION: 333 m

The Responsible Party named above has chosen to submit GPS coordinates in lieu of preparing a new well location plat for a plugging permit or assigned API number on the above well. The Office of Oil and Gas will not accept GPS coordinates that do not meet the following requirements:

1. Datum: NAD 1983, Zone: 17 North, Coordinate Units: meters, Altitude: height above mean sea level (MSL) – meters.
2. Accuracy to Datum – 3.05 meters
3. Data Collection Method:

Survey grade GPS : Post Processed Differential

Real-Time Differential

Mapping Grade GPS : Post Processed Differential

Real-Time Differential

4. **Letter size copy of the topography map showing the well location**

I the undersigned, hereby certify this data is correct to the best of my knowledge and belief and shows all the information required by law and the regulations issued and prescribed by the Office of Oil and Gas.

Gregory A. Smith, P.S. Agent 3-11-14
 Signature Title Date

Received
MAY - 7 2014
Office of Oil and Gas
Dept. of Environmental Protection

LOWNDES #6 47-033-04286

ALL ROADS SHOWN HEREON ARE EXISTING UNLESS OTHERWISE NOTED AND SHALL BE MAINTAINED IN ACCORDANCE WITH WV D.E.P. OIL AND GAS BMP MANUAL ENTRANCES AT COUNTY/STATE ROADS SHALL BE MAINTAINED IN ACCORDANCE WITH WV D.O.T. REGULATION. SEPARATE PERMITS MAY BE REQUIRED BY THE D.O.T.

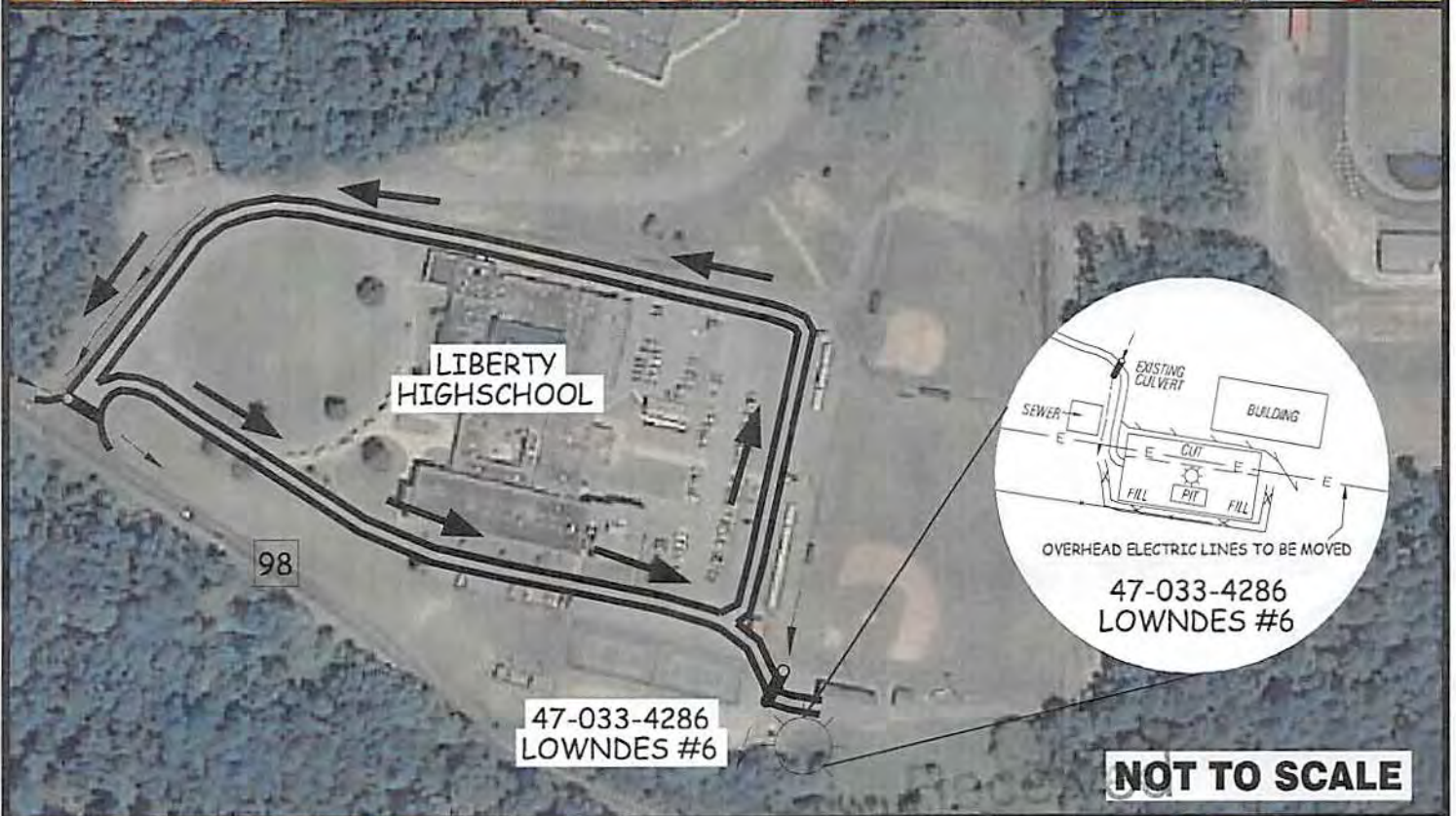
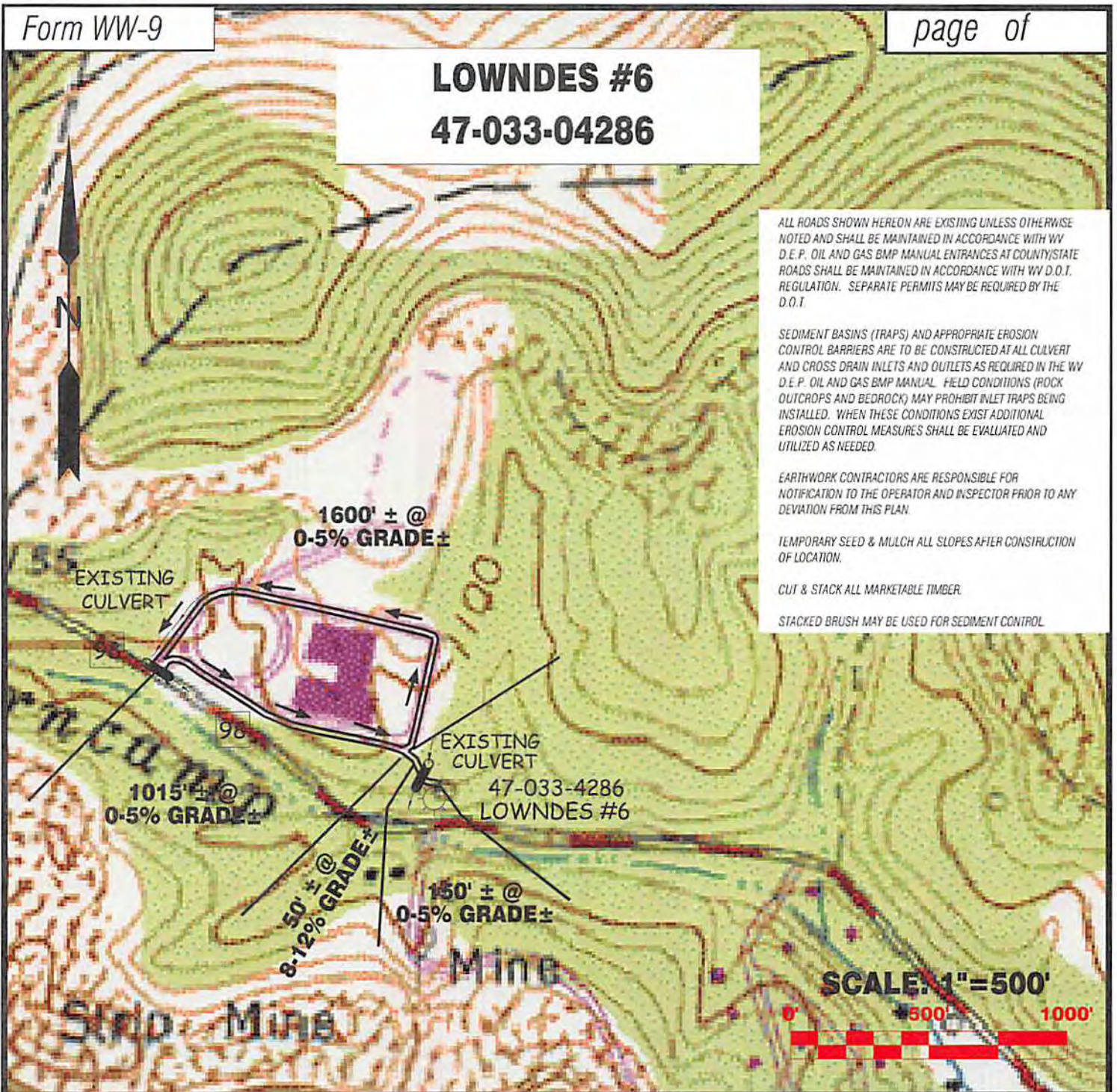
SEDIMENT BASINS (TRAPS) AND APPROPRIATE EROSION CONTROL BARRIERS ARE TO BE CONSTRUCTED AT ALL CULVERT AND CROSS DRAIN INLETS AND OUTLETS AS REQUIRED IN THE WV D.E.P. OIL AND GAS BMP MANUAL. FIELD CONDITIONS (ROCK OUTCROPS AND BEDROCK) MAY PROHIBIT INLET TRAPS BEING INSTALLED. WHEN THESE CONDITIONS EXIST ADDITIONAL EROSION CONTROL MEASURES SHALL BE EVALUATED AND UTILIZED AS NEEDED.

EARTHWORK CONTRACTORS ARE RESPONSIBLE FOR NOTIFICATION TO THE OPERATOR AND INSPECTOR PRIOR TO ANY DEVIATION FROM THIS PLAN.

TEMPORARY SEED & MULCH ALL SLOPES AFTER CONSTRUCTION OF LOCATION.

CUT & STACK ALL MARKETABLE TIMBER.

STACKED BRUSH MAY BE USED FOR SEDIMENT CONTROL.



Professional Energy Consultants
A DIVISION OF SMITH LAND SURVEYING

SURVEYING PROJECT MGMT. **SLS** ENGINEERS ENVIRONMENTAL

P.O. Box 150
Martinsburg, WV 26151
(304) 462-8634 HONESTY. INTEGRITY. QUALITY

20022 Collins Bottom Road
Martinsburg, OH 43047
(740) 871-8911

DRAWN BY C.P.M.	FILE NO. 8193	DATE 04-03-14	CADD FILE: 8193REC.DWG
--------------------	------------------	------------------	---------------------------

TOPO & AERIAL SECTION OF USGS WOLF SUMMIT 7.5' QUADRANGLE

MAY - 7 2014

Office of Oil and Gas
WV Dept. of Environmental Protection

NOT TO SCALE

PDC MOUNTAINEER

06/20/2014