

**PDC MOUNTAINEER, LLC.
GEPCO, PALETTA WELL NO. PAD 4HM**

NOTES:
-PLAT ORIENTATION, CORNERS, AND WELL REFERENCES ARE BASED UPON THE GRID NORTH MERIDIAN FOR THE WV STATE PLANE COORDINATE SYSTEM, NORTH ZONE NAD 27. WELL LOCATION REFERENCE TIES ARE BASED UPON THE MAGNETIC MERIDIAN.

-THERE APPEARS TO BE NO WATER WELLS LOCATED WITHIN 1000' OF WELL 4HM

RONALD D. & SANDRA W. KEFAUVER

TM 366 PAR 32
DB 1044 PG 657
65 AC ±

4575

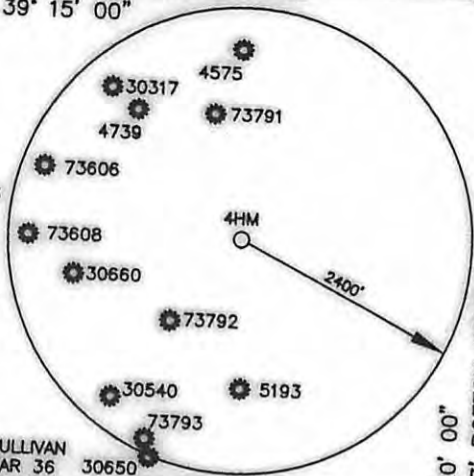
LATITUDE 39° 15' 00"

CLAUDE R. DAVISSON

EST ET AL
TM 366 PAR 40
DB 559 PG10
109.48 AC ±

9,905' TOP HOLE

7,940' BOTTOM HOLE



WILMA A. GIBSON
TM 366 PAR 38
DB 852 PG 319
38.34 AC ±

LAUREL VALLEY SUBDIVISION

CHARLES & CONSTANCE OZALAS
TM 386 PAR 31
DB 1231 PG 151
5 AC ±

R. MARK & DIANA HACKETT
TM 386 PAR 76.5
DB 1327 PG 632
89.6 AC ±

DOMINECK PALETTA ESTATE
TM 386 PAR 32
DB 710 PG 139
20.14 AC ±

DOMINECK PALETTA ESTATE
TM 386 PAR 33
DB 458 PG 49
7.52 AC ±

R. MARK & DIANA HACKETT
TM 386 PAR 77
DB 1327 PG 632
2.5 AC ±

NICHOLAS & KATHRYN WELKS
TM 386 PAR 78
DB 484 PG156
.50 AC ±

R. MARK & DIANA HACKETT
TM 386 PAR 81
DB 1327 PG 632
38.43 AC ±

R. MARK & DIANA HACKETT
TM 386 PAR 101
DB 1373 PG 1284
14.57 AC ±

PORTER WHITEHAIR JR. ET AL
TM 366 PAR 39
DB 1205 PG 1017
25.63 AC ±

LEONARD & LAURA JEFFRIES
TM 366 PAR 34
DB 1202 PG 1227
14.38 AC ±

G. DIANE SULLIVAN
TM 386 PAR 35
DB 565 PG 309
28.66 AC ±

G. DIANE SULLIVAN
TM 386 PAR 36
WB 124 PG 891
73.39 AC ±

DOMINECK PALETTA ESTATE
TM 386 PAR 79
DB 333 PG 324
52 AC ±

R. MARK & DIANA L. HACKETT
TM 386 PAR 84
DB 1379 PG 651
78.45 AC ±

R. MARK & DIANA HACKETT
TM 386 PAR 80 20.53 AC ±
TM 386 PAR 83 3 AC ±
TM 386 PAR 82 15.82 AC ±
DB 1379 PG 632

G. DIANE SULLIVAN
TM 386 PAR 102
WB 124 PG 891
51 AC ±

SHERRY LOUISE RICKETTS
TM 386 PAR 125
WB 144 PG 1014
27.69 AC ±

SHERRY LOUISE RICKETTS
TM 386 PAR 103
WB 144 PG 1014
26.97 AC ±

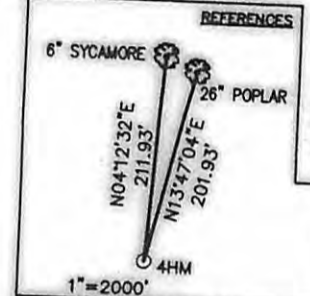
SHERRY LOUISE RICKETTS
TM 386 PAR 127
WB 144 PG 1014
35.98 AC ±

SHERRY LOUISE RICKETTS
TM 386 PAR 126
WB 144 PG 1014
7.12 AC ±

R. MARK & DIANA HACKETT
TM 386 PAR 100
DB 1327 PG 632
12.70 AC ±

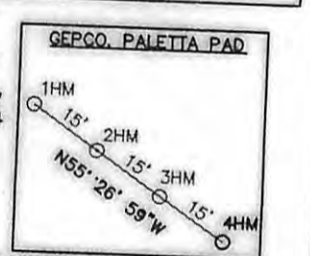
JOHN LOUIE STENGER
TM 406 PAR 9
DB 1041 PG 978
299.77 AC ±

ONA M. & MILDRED E. STOUT
TM 406 PAR 11
DB 1138 PG 993
42.99 AC ±



WELL NO. 4HM TOP HOLE
STATE PLANE COORDINATES (NAD 27 NORTH ZONE)
N: 259756.9121
E: 1753973.2928
LAT: 39°12' 35.72"
LONG: 80° 22' 05.71"
STATE PLANE COORDINATES (NAD 83 NORTH ZONE-METER)
N: 79185.583
E: 525029.131
UTM COORDINATES (NAD 83-METER)
N: 4402165.919
E: -482741.514

WELL NO. 4HM BOTTOM HOLE
STATE PLANE COORDINATES (NAD 27 NORTH ZONE)
N: 259084.303
E: 1755896.388
LAT: 39° 11' 49.54"
LONG: 80° 21' 40.71"
STATE PLANE COORDINATES (NAD 83 NORTH ZONE-METER)
N: 77761.384
E: 525615.313
UTM COORDINATES (NAD 83-METER)
N: 4400666.019
E: -482320.423



Daniel L. Wheeler, P.S. 530

I THE UNDERSIGNED, HEREBY CERTIFY THAT THIS PLAT IS CORRECT TO THE BEST OF MY KNOWLEDGE AND BELIEF AND SHOWS ALL THE INFORMATION REQUIRED BY LAW AND THE REGULATIONS ISSUED AND PRESCRIBED BY THE DIVISION OF ENVIRONMENTAL PROTECTION.

FILE NO. 050-4290
SCALE: 1"=1000'
MINIMUM DEGREE OF ACCURACY: 1 in 2500
PROVEN SOURCE OF ELEVATION: OPUS, SURVEY GRADE GPS

STATE OF WEST VIRGINIA
DIVISION OF ENVIRONMENTAL PROTECTION
OFFICE OF OIL & GAS

DATE MARCH 23, 2011
OPERATOR'S WELL NO. GEPCO, PALETTA PAD NO. 4HM
API WELL NO.
47 - 033 - 05529
STATE COUNTY PERMIT

WELL TYPE: OIL GAS LIQUID INJECTION WASTE DISPOSAL (IF "GAS"), PRODUCTION STORAGE DEEP SHALLOW

LOCATION: ELEVATION: 1162' WATER SHED: WEST FORK RIVER
DISTRICT: UNION COUNTY: HARRISON
QUADRANGLE: MOUNT CLARE 7.5' ACREAGE: 7.52 AC ±
SURFACE OWNER: DOMINECK PALETTA, ESTATE LEASE ACREAGE: 7.52 AC OF 265.85 AC ±
OIL & GAS ROYALTY OWNER: TONY PALETTA, ET. AL. LEASE NO.



PROPOSED WORK: DRILL CONVERT DRILL DEEPER REDRILL FRACTURE OR STIMULATE
PERFORM NEW FORMATION PLUG OFF OLD FORMATION OTHER PHYSICAL CHANGE IN WELL (SPECIFY)

PLUG AND ABANDON CLEAN OUT AND REPLUG
TARGET FORMATION: MARCELLUS SHALE ESTIMATED DEPTH: 7,050' TVD / 11,900' MD

WELL OPERATOR: PDC MOUNTAINEER, LLC. DESIGNATED AGENT: GARY W. FRIDLEY
ADDRESS: 120 GENESIS BOULEVARD BRIDGEPORT, WV 26330 ADDRESS: 120 GENESIS BOULEVARD BRIDGEPORT, WV 26330

07/19/2013