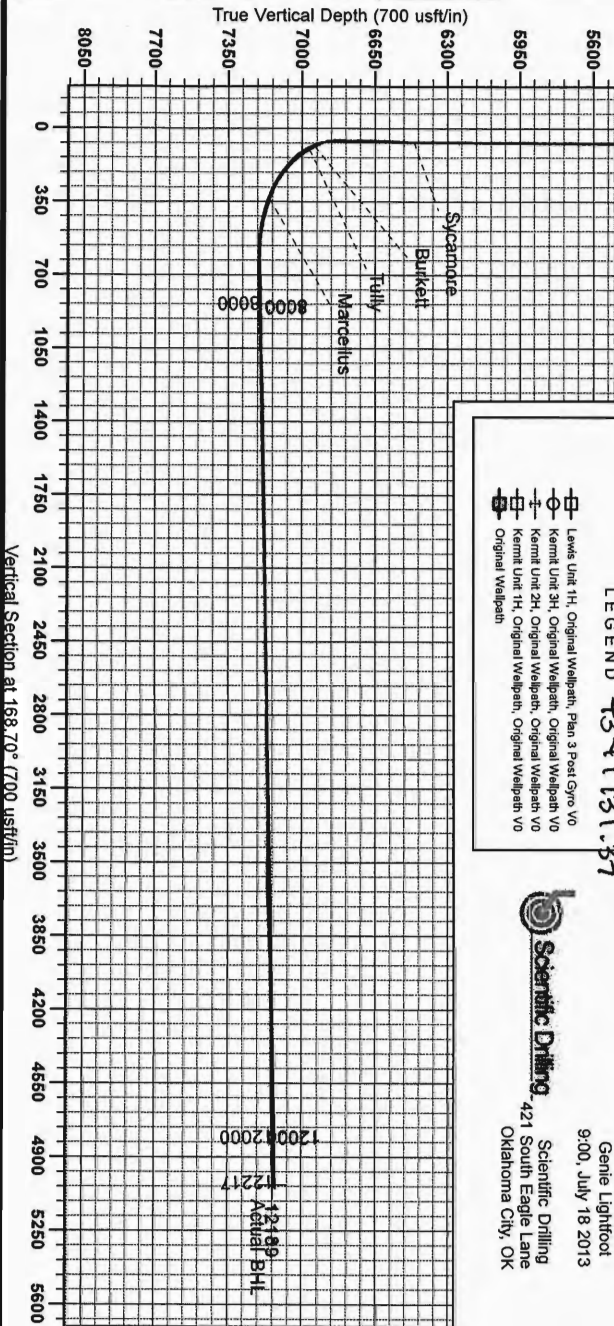




Antero Resources
 Lewis Unit 1H
 Harrison County West Virginia
 Northing: 14243780.06
 Easting: 1790631.01
 Original Wellpath



WELL DETAILS: Lewis Unit 1H

+N/S	+E/W	Northing	Ground Level	1388.0
0.0	0.0	14243780.06	1790631.01 39° 13' 24.865 N80° 28' 10.529 W	S01

PROJECT DETAILS: Harrison County West Virginia
 Geoidic System: Universal Transverse Mercator (US Survey Feet)
 Datum: NAD 1983 (NAD83 CONUS)
 Ellipsoid: Zone 17N (64 W to 78 W)
 System Datum: Mean Sea Level

REFERENCE INFORMATION
 Coordinate Reference: Wellbore Unit 1H (21.50 @ 141.000) (Original Well Bore)
 Station (US Reference): 5247.014 (0.05)
 Station (US Reference): 5457.810 (0.05)
 Station (US Reference): 5460.723 (0.05)
 Station (US Reference): 5460.723 (0.05)
 Station (US Reference): 5460.723 (0.05)

Well Location Coordinates (NAD 83)

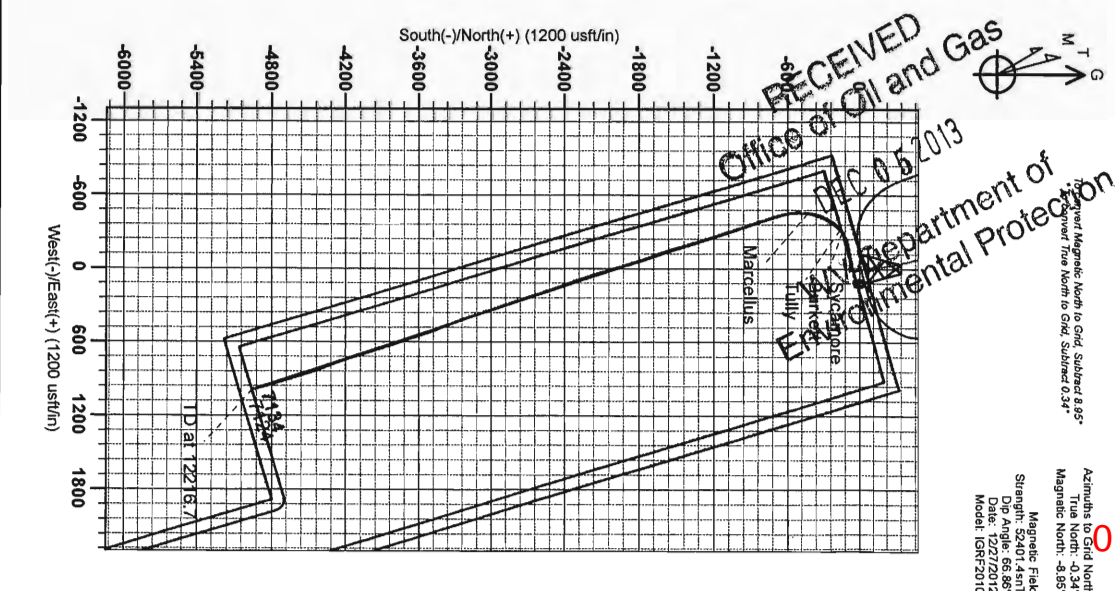
Name	TVD	+N/S	+E/W	Northing	Easting	Latitude	Longitude	Shape
SHL Lewis Unit 1H	0.0	0.0	0.0	14243780.06	1790631.01 39° 13' 24.865 N80° 28' 10.529 W	Point		
Actual BHL	7134.5	-4924.8		985.614238845.30	1791616.6639° 12' 36.016 N80° 27' 58.370 W	Point		
SHL (UTM meters)				4341507.66	545781.00		545° 545', 700.09	
BHL (UTM meters)				4339997.10	546072.31			

LEGEND 43-41731.37

- Lewis Unit 1H, Original Wellpath, Plan 3 Post-Gyro VO
- Kemnt Unit 3H, Original Wellpath, Original Wellpath VO
- Kemnt Unit 2H, Original Wellpath, Original Wellpath VO
- Kemnt Unit 1H, Original Wellpath, Original Wellpath VO
- Original Wellpath

Genie Lightfoot
 9:00, July 18 2013

Scientific Drilling
 421 South Eagle Lane
 Oklahoma City, OK



RECEIVED
 Office of Oil and Gas
 Department of Environmental Protection
 01/17/2014

Azimuths to Grid North
 True North: -0.34°
 Magnetic North: -8.85°
 Magnetic Field
 Strength: 53401.45nT
 Dip Angle: 66.86°
 Date: 12/27/2012
 Model: IGRF2010