



Antero Resources
Thrash Unit 1H
 Harrison County West Virginia
 Northing: 14233777.89
 Easting: 1787701.64
 Original Wellpath

WELL DETAILS: Thrash Unit 1H
 Ground Level: 1089.0
 Slot
 +N/S +E/W Northing Easting Longitude
 0.0 0.0 14233777.89 1787701.64 29° 48.494 W

PROJECT DETAILS: Harrison County West Virginia
 Geoidic System: Universal Transverse Mercator (US Survey Feet)
 Datum: NAD 1983 (NAD83 CONUS)
 Ellipsoid: Clarke 1866 (6379732.0m)
 Zone: Zone 17N (84 W to 78 W)
 System Datum: Mean Sea Level

REFERENCE INFORMATION
 Coordinates (NAD Reference): Well Thrash Unit 1H, Grid North
 Vertical (VD) Reference: Thrash Unit 1089.0 CL * 27' 40" (B) 1116.042 (Original Well Elev)
 Horizontal (HD) Reference: Thrash Unit 1089.0 CL * 27' 40" (B) 1116.042 (Original Well Elev)
 Calculation Method: Minimum Curvature

Genie Lightfoot
 11:03, July 18 2013
 Scientific Drilling
 421 South Eagle Lane
 Oklahoma City, OK

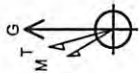
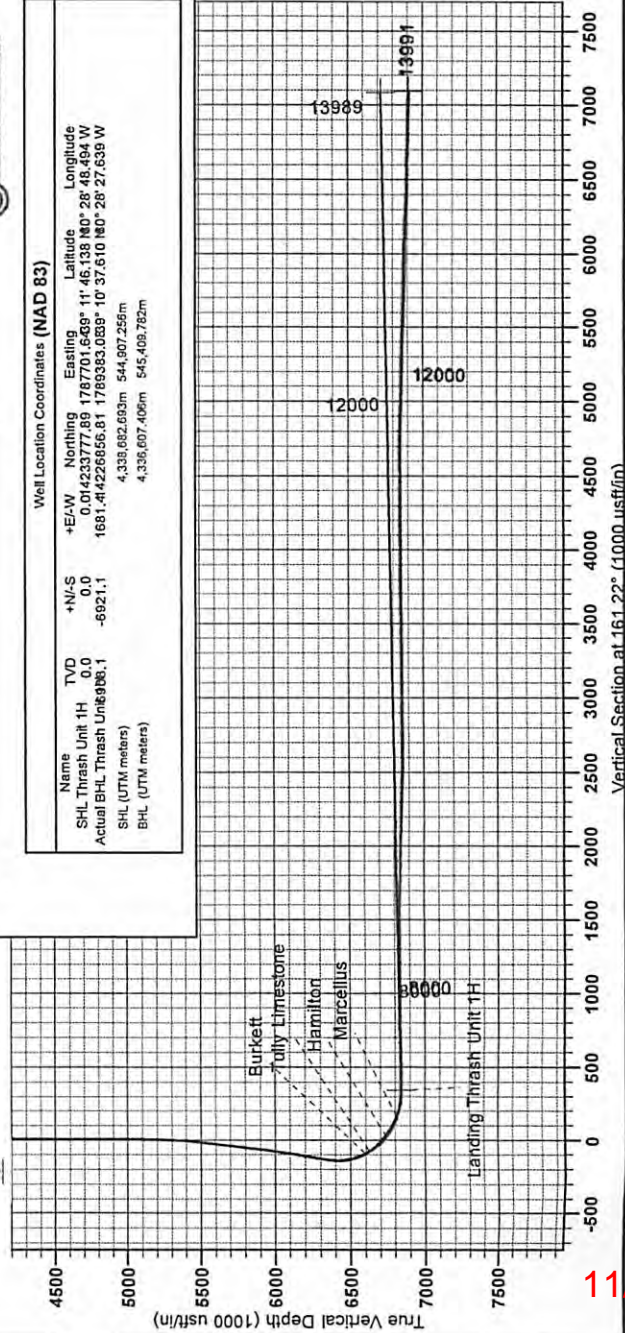


LEGEND

- Thrash Unit 1H, Original Wellpath, Plan 4 V0
- Original Wellpath

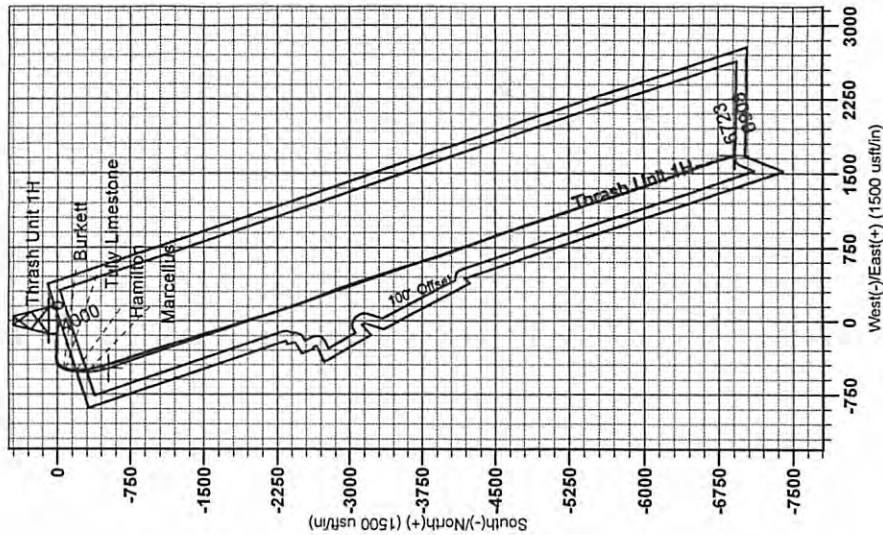
Well Location Coordinates (NAD 83)

Name	TVD	+N/S	+E/W	Northing	Easting	Latitude	Longitude
SHL Thrash Unit 1H	0.0	0.0	0.0	14233777.89	1787701.64	29° 48.494 W	1089.0
Actual BH-LL Thrash Unit 1H	0.0	-6921.1	1661.4	14226656.81	1789383.0839	10° 37.610 N	28° 27.639 W
SHL (UTM meters)				4,336,682.693m	544,907.256m		
BHL (UTM meters)				4,336,607.406m	545,409.782m		



To convert Magnetic North to Grid, Subtract 8.93°
 To convert True North to Grid, Subtract 0.33°

Azimuths to Grid North
 True North: -0.33°
 Magnetic North: -8.93°
 Magnetic Field
 Strength: 52406.7 nT
 Declination: 91.020212°
 Model: IGRF2010



33.05666

11/08/2013

RECEIVED
 Office of Oil & Gas

SEP 0 8 2013