

955' to Bottom Hole

1,985' to Top Hole

LATITUDE 39 - 12 - 30

LONGITUDE 80 - 30 - 00

3,998' to Top Hole

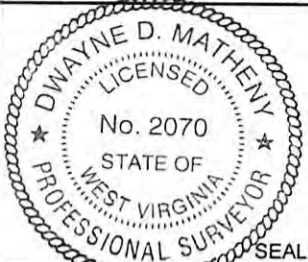
11,257' to Bottom Hole

Antero Resources  
Well No. Marion Unit 1H  
Antero Resources  
Appalachian Corporation

Water Well (John Martin)  
Kenneth M. & Elaine Calkins Lease 087930  
and  
South Penn Oil Co. Lease 031808

I, the undersigned, hereby certify that this plat is correct to the best of my knowledge and belief and shows all the information required by law and the regulations issued and prescribed by the Department of Environmental Protection.

Dwayne D. Matheny, P.S. 2070



Bearing	Dist.
L1 S 89°18' E	883.5'
L2 S 50°58' E	882.3'
L3 S 25°38' E	946.5'
L4 N 63°31' W	882.8'

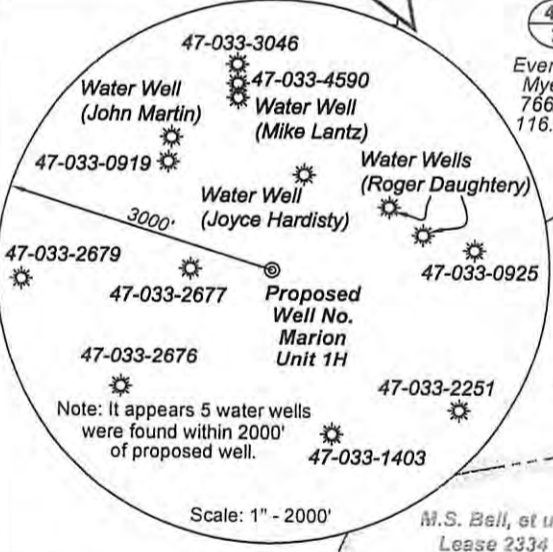
Antero Resources  
Appalachian Corp.  
1403/903  
98.69 Acres

**Notes:**  
West Virginia Coordinate System of 1927, North Zone based upon Differential GPS Measurements.  
Well No. Marion Unit 1H Top Hole coordinates are  
N: 255,568.73' Latitude: 39°11'50.27"  
E: 1,714,651.66' Longitude: 80°30'24.64"  
Bottom Hole coordinates are  
N: 248,309.26' Latitude: 39°10'38.63"  
E: 1,715,681.07' Longitude: 80°30'10.54"  
**UTM Zone 17, NAD 1983**  
Top Hole Coordinates Bottom Hole Coordinates  
N: 4,338,797.094m N: 4,336,590.711m  
E: 542,600.163m E: 542,950.625m  
Plat orientation and corner and well references are based upon the grid north meridian.  
Well location references are based upon the magnetic meridian.



Well Location References

Scale: 1" = 200'



**Legend**

- ⊙ Proposed gas well
- Found corner, as noted
- ☼ Found Well, as noted
- Surface boundary (approx.)
- - - Interior surface tracts (approx.)
- Existing Road
- - - Creek or Drain

⊙ Denotes location of well on United States topographic maps



FILE NO: 195-36-C-12  
DRAWING NO: 195-12 Marion Unit 1H  
SCALE: 1" = 1000'  
MINIMUM DEGREE OF ACCURACY: Submeter  
PROVEN SOURCE OF ELEVATION: WVDOT, Bridgeport, WV

STATE OF WEST VIRGINIA  
DEPARTMENT OF ENVIRONMENTAL PROTECTION  
OIL AND GAS DIVISION

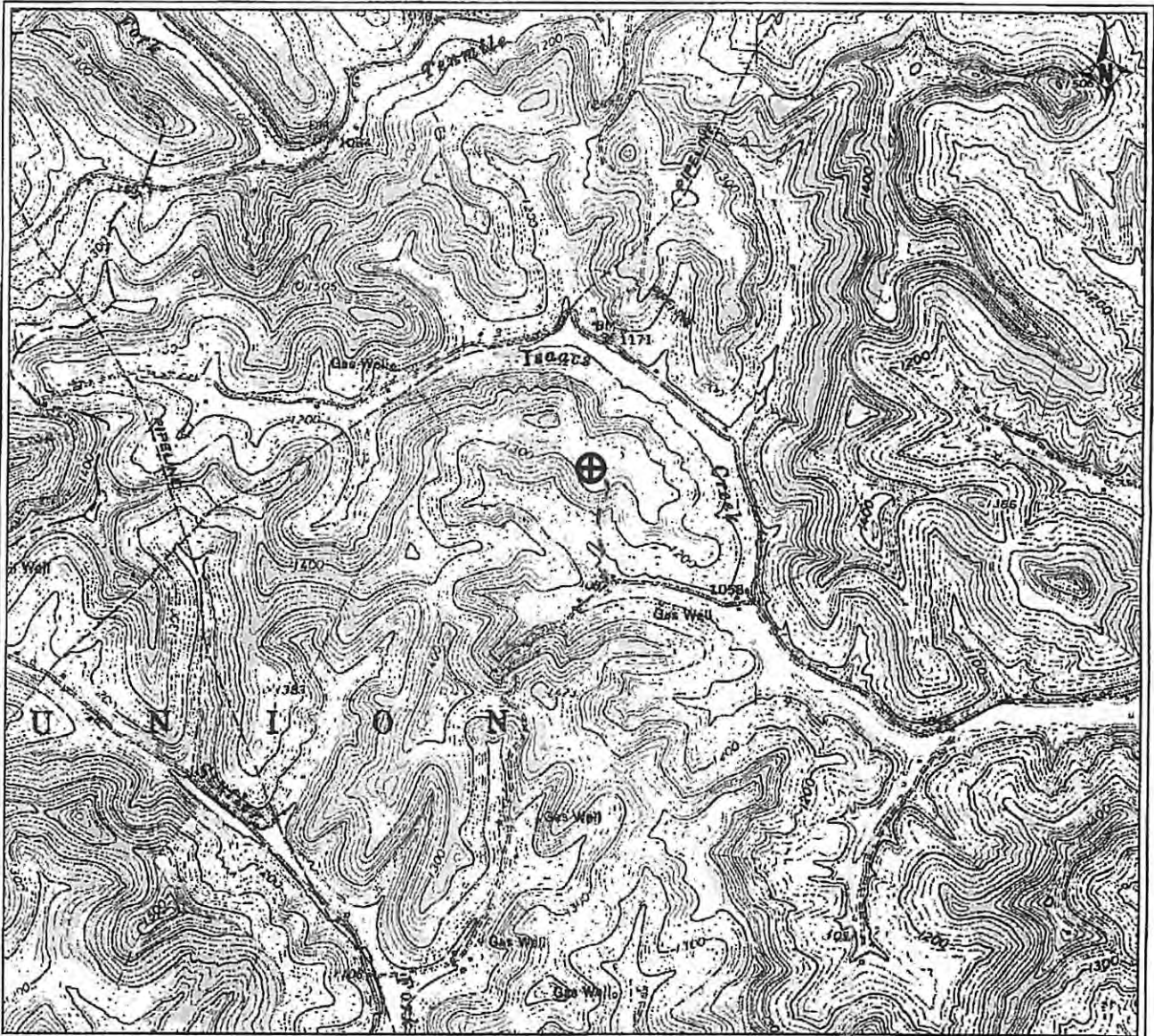
DATE: July 16 20 12  
OPERATOR'S WELL NO. Marion Unit 1H  
API WELL NO. 47-033-05667H0A  
STATE COUNTY PERMIT

WELL TYPE:  OIL  GAS  LIQUID INJECTION  WASTE DISPOSAL  
(IF GAS) PRODUCTION:  STORAGE  DEEP  SHALLOW  
LOCATION: ELEVATION: 1358' WATERSHED: Isaacs Creek QUADRANGLE: Big Isaac  
DISTRICT: Union COUNTY: Harrison  
SURFACE OWNER: Antero Resources Wm W. Bowyer & Velma F. Westfall, et al  
Appalachian Corp. Velma F. Westfall & Mary W. Westfall, Virgil A. Sinclair, et al  
Edna Mae McCall, et al; Violet Lee Rodney  
Marion Yates, et ux; Mary Thrash, et al; M.S. Bell, et ux  
OIL & GAS ROYALTY OWNER: Lovie E. & Forman E. Dawson; Nancy E. Nutter; William Yates, et al LEASE #: DV020183; DV017810; 2334  
PROPOSED WORK:  DRILL  CONVERT  DRILL DEEPER  FRACTURE OR STIMULATE  PLUG OFF OLD FORMATION  
 PERFORATE NEW FORMATION  OTHER PHYSICAL CHANGE IN WELL (SPECIFY) \_\_\_\_\_ 7,400' TVD  
 PLUG AND ABANDON  CLEAN OUT AND REPLUG TARGET FORMATION: Marcellus Shale ESTIMATED DEPTH: 15,500' MD

WELL OPERATOR: Antero Resources Appalachian Corporation ADDRESS: 1625 17th Street Denver, CO 80202  
DESIGNATED AGENT: Dianna Stamper - CT Corporation System ADDRESS: 5400 D Big Tyler Road Charleston, WV 25313

10/26/2012

33-5667



PETRA 7/28/2012 12:12:15 PM

**Antero Resources Corporation**

APPALACHIAN BASIN

Quinn Pad

Marion Unit 1H

Harrison County

REMARKS  
QUADRANGLE: BIG ISAAC  
WATERSHED: ISAACS CR./W FORK RIVER  
DISTRICT: UNION



July 28, 2012

10/26/2012