

JUN 08 2015

WV GEOLOGICAL SURVEY
MORGANTOWN, WV



Antero Resources
Bennett Unit 2H
Harrison County West Virginia
Northing: 14236491.11
Easting: 1789256.82
As Drilled



Genie Lightfoot
10-42, August 22 2013
Scientific Drilling
421 South Eagle Lane
Oklahoma City, OK

WELL DETAILS: Bennett Unit 2H

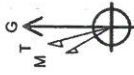
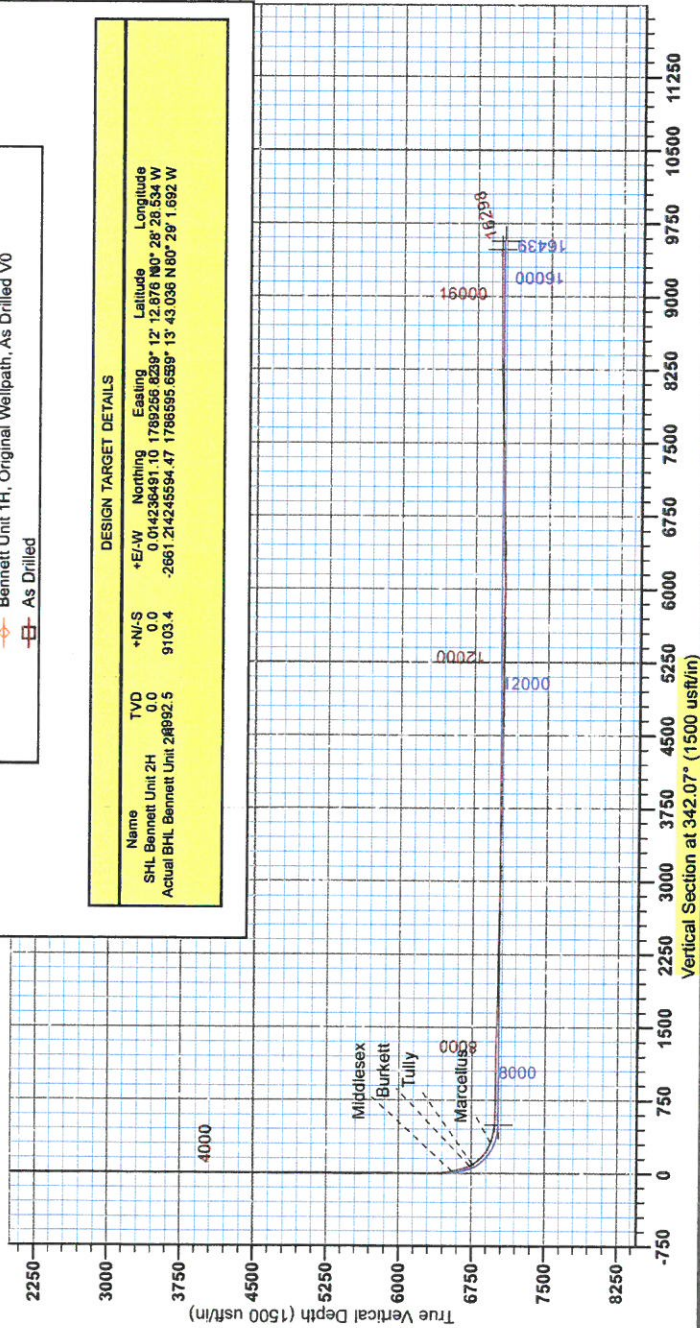
+N-S	+E-W	Northing	Ground Level:	Latitude	Longitude	Spot
0.0	0.0	14236491.11	1789256.82 30' 12"	12.876 N 80° 28' 28.54 W		

LEGEND

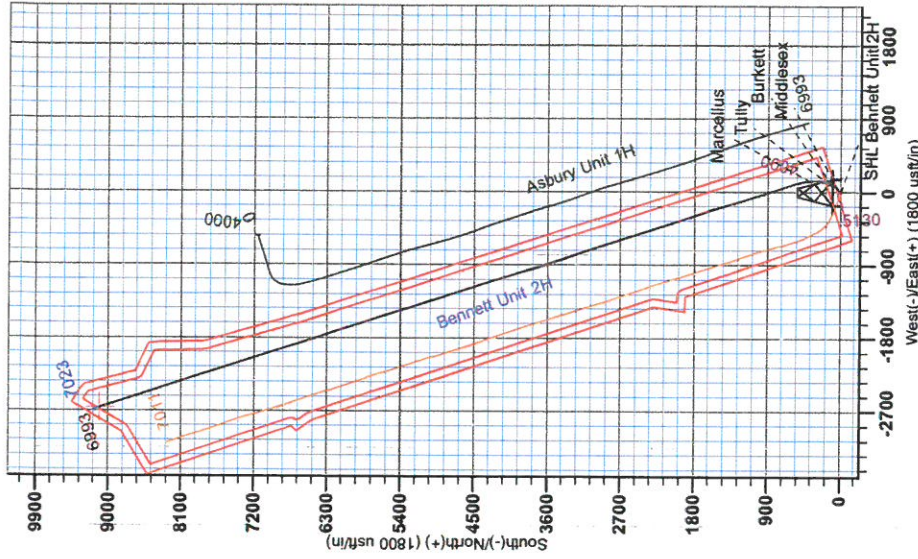
- ◆ Asbury Unit 1H, Original Wellpath, Original Wellpath V0
- Bennett Unit 2H, Original Wellpath, Plan 2 Post Gyro V0
- Bruus Unit 2H, Original Wellpath, As Drilled V0
- ◇ Bennett Unit 1H, Original Wellpath, As Drilled V0
- ▣ As Drilled

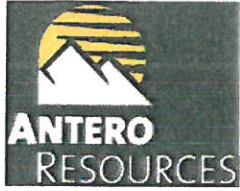
DESIGN TARGET DETAILS

Name	TVD	+N-S	+E-W	Northing	Easting	Latitude	Longitude
SHL Bennett Unit 2H	0.0	0.0	0.0	0.014236491 10	1789256 8239' 12"	12.876 N 80° 28' 28.54 W	
Actual BHL Bennett Unit 2H	28992.5	9103.4	-2661.214245594.47	1786595 6589' 13"	-43.036 N 80° 26' 1.692 W		



Azimuth to Grid North
True North: -0.33°
Magnetic North: -9.96°
Magnetic Field
Strength: 52343.4nT
Dip Angle: 66.61°
Date: 5/24/2013
Model: IGRF2010





RECEIVED

JUN 08 2015

WV GEOLOGICAL SURVEY
MORGANTOWN, WV

Antero Resources

Harrison County West Virginia
Bennett/Brutus Pad
Bennett Unit 2H
Original Wellpath

Design: As Drilled

EOW Completion Report

22 August, 2013



JUN 08 2015



WV GEOLOGICAL SURVEY
MORGANTOWN, WV

EOW Completion Report



Company: Antero Resources	Local Co-ordinate Reference: Well Bennett Unit 2H
Project: Harrison County West Virginia	TVD Reference: Bennett 2H 1235 GL + 28 KB @ 1263.0usft
Site: Bennett/Brutus Pad	MD Reference: Bennett 2H 1235 GL + 28 KB @ 1263.0usft
Well: Bennett Unit 2H	North Reference: Grid
Wellbore: Original Wellpath	Survey Calculation Method: Minimum Curvature
Design: As Drilled	Database: Oklahoma District

Project	Harrison County West Virginia, Harrison County, USA		
Map System:	Universal Transverse Mercator (US Survey Feet)	System Datum:	Mean Sea Level
Geo Datum:	NAD 1927 (NADCON CONUS)		
Map Zone:	Zone 17N (84 W to 78 W)		

Site	Bennett/Brutus Pad		
Site Position:	Northing:	14,236,491.11 usft	Latitude: 39° 12' 12.876 N
From: Map	Easting:	1,789,256.82 usft	Longitude: 80° 28' 28.534 W
Position Uncertainty: 0.0 usft	Slot Radius: 13-3/16"	Grid Convergence:	0.33 °

Well	Bennett Unit 2H, Marcellus		
Well Position	+N/-S	0.0 usft	Northing: 14,236,491.11 usft
	+E/-W	0.0 usft	Easting: 1,789,256.82 usft
Position Uncertainty	2.0 usft	Wellhead Elevation:	1,263.0 usft
		Ground Level:	1,235.0 usft

Wellbore	Original Wellpath				
Magnetics	Model Name	Sample Date	Declination (°)	Dip Angle (°)	Field Strength (nT)
	IGRF2010	5/24/2013	-8.63	66.81	52,343

Design	As Drilled			
Audit Notes:				
Version: 1.0	Phase:	ACTUAL	Tie On Depth:	0.0
Vertical Section:	Depth From (TVD) (usft)	+N/-S (usft)	+E/-W (usft)	Direction (°)
	0.0	0.0	0.0	342.07

Survey Program	Date 8/22/2013			
From (usft)	To (usft)	Survey (Wellbore)	Tool Name	Description
115.0	6,296.0	Survey #1 Gyro (Original Wellpath)	SDI Standard Keeper	Scientific Drilling Intl. Standard Wireline Keeper
6,330.0	16,298.0	Survey #2 MWD (Original Wellpath)	SDI MWD	Scientific Drilling Intl. MWD - Standard ver 1.0.1

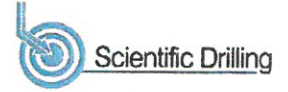
Survey	MD (usft)	Inc (°)	Azi (azimuth) (°)	TVD (usft)	N/S (usft)	E/W (usft)	V. Sec (usft)	DLeg (°/100usft)
	0.0	0.00	0.00	0.0	0.0	0.0	0.0	0.00
	115.0	0.83	43.72	115.0	0.6	0.6	0.4	0.72
	215.0	0.91	49.44	215.0	1.6	1.7	1.0	0.12
	315.0	1.87	78.21	315.0	2.5	3.9	1.2	1.16
	415.0	1.86	78.26	414.9	3.2	7.1	0.8	0.01
	515.0	0.99	85.54	514.9	3.6	9.5	0.5	0.89
	615.0	0.65	86.26	614.9	3.7	10.9	0.1	0.34
	715.0	0.48	79.56	714.9	3.8	11.9	-0.1	0.18
	815.0	0.45	84.90	814.9	3.9	12.7	-0.2	0.05
	915.0	0.41	83.70	914.8	4.0	13.5	-0.4	0.04
	1,015.0	0.51	85.42	1,014.8	4.0	14.3	-0.6	0.10

JUN 08 2015



WV GEOLOGICAL SURVEY
MORGANTOWN, WV

EOW Completion Report



Company: Antero Resources
Project: Harrison County West Virginia
Site: Bennett/Brutus Pad
Well: Bennett Unit 2H
Wellbore: Original Wellpath
Design: As Drilled

Local Co-ordinate Reference: Well Bennett Unit 2H
TVD Reference: Bennett 2H 1235 GL + 28 KB @ 1263.0usft
MD Reference: Bennett 2H 1235 GL + 28 KB @ 1263.0usft
North Reference: Grid
Survey Calculation Method: Minimum Curvature
Database: Oklahoma District

Survey

MD (usft)	Inc (°)	Azi (azimuth) (°)	TVD (usft)	N/S (usft)	E/W (usft)	V. Sec (usft)	DLeg (°/100usft)
1,115.0	0.42	87.18	1,114.8	4.1	15.1	-0.8	0.09
1,215.0	0.18	94.33	1,214.8	4.1	15.6	-0.9	0.24
1,315.0	0.33	80.50	1,314.8	4.1	16.0	-1.0	0.16
1,415.0	0.33	83.04	1,414.8	4.2	16.6	-1.1	0.01
1,515.0	0.19	90.86	1,514.8	4.2	17.1	-1.2	0.14
1,615.0	0.24	82.06	1,614.8	4.3	17.4	-1.3	0.06
1,715.0	0.14	99.59	1,714.8	4.3	17.8	-1.4	0.11
1,815.0	0.07	78.33	1,814.8	4.3	17.9	-1.5	0.08
1,915.0	0.08	60.79	1,914.8	4.3	18.1	-1.5	0.02
2,015.0	0.18	66.20	2,014.8	4.4	18.3	-1.4	0.10
2,115.0	0.31	64.02	2,114.8	4.6	18.7	-1.4	0.13
2,215.0	0.13	68.18	2,214.8	4.8	19.0	-1.3	0.18
2,315.0	0.07	115.85	2,314.8	4.8	19.2	-1.4	0.10
2,415.0	0.11	80.17	2,414.8	4.8	19.3	-1.4	0.07
2,515.0	0.11	89.28	2,514.8	4.8	19.5	-1.5	0.02
2,615.0	0.07	148.00	2,614.8	4.7	19.6	-1.5	0.09
2,715.0	0.06	53.34	2,714.8	4.7	19.7	-1.6	0.10
2,815.0	0.11	66.30	2,814.8	4.8	19.8	-1.6	0.05
2,915.0	0.08	112.86	2,914.8	4.8	20.0	-1.6	0.08
3,015.0	0.09	18.13	3,014.8	4.8	20.1	-1.6	0.13
3,115.0	0.04	60.58	3,114.8	4.9	20.1	-1.5	0.07
3,215.0	0.14	41.02	3,214.8	5.0	20.2	-1.4	0.10
3,315.0	0.13	321.86	3,314.8	5.2	20.3	-1.3	0.17
3,415.0	0.10	194.06	3,414.8	5.2	20.2	-1.2	0.21
3,515.0	0.14	267.09	3,514.8	5.1	20.0	-1.3	0.15
3,615.0	0.26	209.87	3,614.8	4.9	19.8	-1.4	0.22
3,715.0	0.48	226.86	3,714.8	4.4	19.4	-1.7	0.24
3,815.0	0.82	239.44	3,814.8	3.8	18.4	-2.1	0.37
3,915.0	0.93	239.50	3,914.8	3.0	17.1	-2.4	0.11
4,015.0	0.99	238.16	4,014.8	2.2	15.7	-2.8	0.06
4,115.0	1.25	242.49	4,114.8	1.2	14.0	-3.2	0.27
4,215.0	1.29	246.78	4,214.8	0.2	12.0	-3.5	0.10
4,315.0	1.33	242.68	4,314.7	-0.7	9.9	-3.8	0.10
4,415.0	1.17	245.80	4,414.7	-1.7	8.0	-4.1	0.17
4,515.0	1.30	247.41	4,514.7	-2.5	6.0	-4.3	0.13
4,615.0	1.34	248.31	4,614.7	-3.4	3.9	-4.4	0.05
4,715.0	1.33	243.83	4,714.6	-4.4	1.7	-4.7	0.10
4,815.0	1.00	252.79	4,814.6	-5.1	-0.1	-4.8	0.38
4,915.0	0.92	242.28	4,914.6	-5.8	-1.7	-5.0	0.19
5,015.0	0.84	253.33	5,014.6	-6.3	-3.1	-5.1	0.19
5,115.0	0.85	243.82	5,114.6	-6.9	-4.5	-5.2	0.14
5,215.0	0.74	244.04	5,214.6	-7.5	-5.7	-5.4	0.11
5,315.0	0.74	259.69	5,314.6	-7.9	-6.9	-5.4	0.20
5,415.0	0.53	261.81	5,414.6	-8.1	-8.0	-5.2	0.21

JUN 08 2015



WV GEOLOGICAL SURVEY
MORGANTOWN, WV

EOW Completion Report



Company: Antero Resources
Project: Harrison County West Virginia
Site: Bennett/Brutus Pad
Well: Bennett Unit 2H
Wellbore: Original Wellpath
Design: As Drilled

Local Co-ordinate Reference: Well Bennett Unit 2H
TVD Reference: Bennett 2H 1235 GL + 28 KB @ 1263.0usft
MD Reference: Bennett 2H 1235 GL + 28 KB @ 1263.0usft
North Reference: Grid
Survey Calculation Method: Minimum Curvature
Database: Oklahoma District

Survey

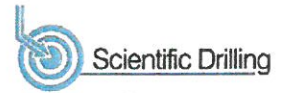
MD (usft)	Inc (°)	Azi (azimuth) (°)	TVD (usft)	N/S (usft)	E/W (usft)	V. Sec (usft)	DLeg (°/100usft)
5,515.0	0.32	272.01	5,514.6	-8.1	-8.8	-5.0	0.22
5,615.0	0.27	294.87	5,614.6	-8.0	-9.3	-4.8	0.13
5,715.0	0.20	337.92	5,714.6	-7.7	-9.5	-4.4	0.18
5,815.0	0.21	47.91	5,814.5	-7.5	-9.5	-4.2	0.24
5,915.0	0.13	25.00	5,914.5	-7.2	-9.3	-4.0	0.10
6,015.0	0.02	348.74	6,014.5	-7.1	-9.2	-3.9	0.11
6,115.0	0.27	15.41	6,114.5	-6.9	-9.2	-3.7	0.25
6,215.0	0.22	29.84	6,214.5	-6.5	-9.0	-3.4	0.08
6,296.0	0.29	50.07	6,295.5	-6.2	-8.8	-3.2	0.14
6,330.0	0.33	354.70	6,329.5	-6.1	-8.7	-3.1	0.85
6,362.0	0.53	86.31	6,361.5	-6.0	-8.6	-3.0	1.98
6,393.0	2.73	35.34	6,392.5	-5.3	-8.0	-2.6	7.84
6,425.0	7.13	31.07	6,424.4	-3.0	-6.6	-0.9	13.79
6,457.0	11.83	27.14	6,456.0	1.6	-4.0	2.8	14.82
6,488.0	16.23	31.70	6,486.0	8.1	-0.3	7.8	14.62
6,519.0	20.24	39.66	6,515.5	15.9	5.4	13.5	15.20
6,551.0	22.99	43.79	6,545.2	24.7	13.3	19.4	9.82
6,558.0	23.60	43.89	6,551.6	26.7	15.2	20.7	8.73
Middlesex							
6,582.0	25.69	44.19	6,573.5	33.9	22.1	25.4	8.73
6,613.0	28.93	49.06	6,601.0	43.6	32.5	31.5	12.69
6,645.0	30.04	49.92	6,628.9	53.9	44.5	37.6	3.71
6,677.0	30.78	43.07	6,656.5	65.0	56.2	44.5	11.07
6,708.0	32.14	35.42	6,682.9	77.5	66.4	53.3	13.60
6,740.0	34.07	29.93	6,709.7	92.2	75.8	64.4	11.14
6,767.0	35.61	26.36	6,731.9	105.8	83.1	75.1	9.47
Burkett							
6,772.0	35.91	25.73	6,735.9	108.5	84.3	77.2	9.47
6,801.0	38.23	22.35	6,759.1	124.4	91.4	90.2	10.66
Tully							
6,804.0	38.48	22.02	6,761.4	126.1	92.1	91.7	10.66
6,835.0	41.20	19.57	6,785.2	144.7	99.2	107.1	10.13
6,867.0	44.00	17.46	6,808.8	165.2	106.1	124.6	9.82
6,899.0	46.59	15.94	6,831.3	187.0	112.6	143.3	8.77
6,930.0	49.33	14.13	6,852.1	209.3	118.5	162.6	9.84
6,962.0	53.59	11.55	6,872.0	233.7	124.1	184.1	14.73
6,993.0	58.12	8.77	6,889.4	258.9	128.6	206.7	16.39
7,025.0	61.59	5.00	6,905.5	286.4	131.9	231.9	14.88
7,057.0	63.75	1.49	6,920.2	314.7	133.5	258.4	11.85
7,089.0	66.38	358.59	6,933.6	343.8	133.5	286.0	11.62
7,120.0	69.54	356.06	6,945.3	372.5	132.2	313.7	12.69
Marcellus							
7,121.0	69.64	355.98	6,945.6	373.4	132.1	314.6	12.69
7,152.0	72.57	354.12	6,955.7	402.6	129.6	343.2	11.02
7,184.0	75.43	352.61	6,964.5	433.2	126.0	373.3	10.02

JUN 08 2015



WV GEOLOGICAL SURVEY
MORGANTOWN, WV

EOW Completion Report



Company: Antero Resources
Project: Harrison County West Virginia
Site: Bennett/Brutus Pad
Well: Bennett Unit 2H
Wellbore: Original Wellpath
Design: As Drilled

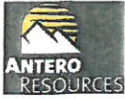
Local Co-ordinate Reference: Well Bennett Unit 2H
TVD Reference: Bennett 2H 1235 GL + 28 KB @ 1263.0usft
MD Reference: Bennett 2H 1235 GL + 28 KB @ 1263.0usft
North Reference: Grid
Survey Calculation Method: Minimum Curvature
Database: Oklahoma District

Survey

MD (usft)	Inc (°)	Azi (azimuth) (°)	TVD (usft)	N/S (usft)	E/W (usft)	V. Sec (usft)	DLeg (°/100usft)
7,216.0	78.39	351.70	6,971.7	464.0	121.8	404.0	9.66
7,248.0	80.98	351.26	6,977.5	495.2	117.1	435.1	8.21
7,279.0	81.89	349.12	6,982.1	525.4	111.9	465.4	7.43
7,311.0	84.46	345.88	6,985.9	556.4	105.0	497.0	12.87
7,385.0	89.60	340.49	6,989.7	627.1	83.6	570.9	10.06
7,479.0	89.69	337.85	6,990.3	714.9	50.2	664.7	2.81
7,575.0	89.25	339.88	6,991.2	804.4	15.6	760.6	2.16
7,670.0	89.52	342.34	6,992.2	894.3	-15.2	855.6	2.60
7,765.0	89.43	342.25	6,993.1	984.8	-44.1	950.5	0.13
7,860.0	89.52	344.36	6,994.0	1,075.8	-71.3	1,045.5	2.22
7,956.0	89.60	343.04	6,994.7	1,167.9	-98.3	1,141.5	1.38
8,051.0	89.25	343.74	6,995.6	1,259.0	-125.4	1,236.4	0.82
8,145.0	90.04	344.80	6,996.2	1,349.4	-150.9	1,330.4	1.41
8,239.0	87.49	343.83	6,998.3	1,439.9	-176.3	1,424.3	2.90
8,333.0	87.67	343.66	7,002.2	1,530.1	-202.6	1,518.1	0.26
8,428.0	88.81	342.25	7,005.1	1,620.9	-230.5	1,613.1	1.91
8,523.0	88.99	339.17	7,007.0	1,710.5	-261.8	1,708.0	3.25
8,618.0	89.69	339.70	7,008.1	1,799.4	-295.2	1,802.9	0.92
8,714.0	88.99	341.63	7,009.2	1,890.0	-327.0	1,898.9	2.14
8,810.0	89.34	341.90	7,010.6	1,981.2	-357.0	1,994.9	0.46
8,905.0	89.87	342.34	7,011.2	2,071.6	-386.2	2,089.9	0.73
9,000.0	90.40	342.86	7,011.0	2,162.2	-414.6	2,184.9	0.78
9,096.0	88.55	340.93	7,011.9	2,253.5	-444.4	2,280.8	2.78
9,191.0	88.81	341.28	7,014.1	2,343.3	-475.2	2,375.8	0.46
9,285.0	89.78	342.42	7,015.2	2,432.6	-504.5	2,469.8	1.59
9,379.0	88.11	341.63	7,016.9	2,522.0	-533.5	2,563.8	1.97
9,474.0	88.90	342.60	7,019.4	2,612.4	-562.6	2,658.7	1.32
9,568.0	89.43	342.25	7,020.8	2,702.0	-591.0	2,752.7	0.68
9,663.0	88.52	342.05	7,022.5	2,792.4	-620.1	2,847.7	0.98
9,757.0	88.99	342.86	7,024.5	2,882.0	-648.4	2,941.7	1.00
9,852.0	89.08	340.14	7,026.1	2,972.1	-678.6	3,036.7	2.86
9,946.0	89.52	339.96	7,027.3	3,060.5	-710.7	3,130.6	0.51
10,040.0	90.13	340.32	7,027.6	3,148.9	-742.6	3,224.5	0.75
10,134.0	90.22	340.93	7,027.3	3,237.5	-773.8	3,318.5	0.66
10,224.0	91.01	341.55	7,026.3	3,322.8	-802.7	3,408.5	1.12
10,315.0	89.60	343.04	7,025.8	3,409.4	-830.4	3,499.5	2.25
10,405.0	88.29	340.14	7,027.5	3,494.8	-858.8	3,589.5	3.54
10,496.0	89.69	341.02	7,029.1	3,580.6	-889.0	3,680.4	1.82
10,586.0	90.40	341.99	7,029.0	3,666.0	-917.6	3,770.4	1.34
10,678.0	90.04	343.57	7,028.7	3,753.8	-944.8	3,862.4	1.76
10,768.0	88.46	343.13	7,029.9	3,840.0	-970.6	3,952.4	1.82
10,860.0	90.54	345.73	7,030.7	3,928.7	-995.3	4,044.3	3.62
10,951.0	90.13	343.83	7,030.1	4,016.5	-1,019.2	4,135.2	2.14
11,042.0	90.22	342.86	7,029.8	4,103.6	-1,045.3	4,226.1	1.07

RECEIVED

JUN 08 2015



WV GEOLOGICAL SURVEY MORGANTOWN, WV

EOW Completion Report



Company: Antero Resources
Project: Harrison County West Virginia
Site: Bennett/Brutus Pad
Well: Bennett Unit 2H
Wellbore: Original Wellpath
Design: As Drilled

Local Co-ordinate Reference: Well Bennett Unit 2H
TVD Reference: Bennett 2H 1235 GL + 28 KB @ 1263.0usft
MD Reference: Bennett 2H 1235 GL + 28 KB @ 1263.0usft
North Reference: Grid
Survey Calculation Method: Minimum Curvature
Database: Oklahoma District

Survey

MD (usft)	Inc (°)	Azi (azimuth) (°)	TVD (usft)	N/S (usft)	E/W (usft)	V. Sec (usft)	DLeg (°/100usft)
11,133.0	87.76	343.22	7,031.4	4,190.7	-1,071.8	4,317.1	2.73
11,227.0	88.20	341.90	7,034.8	4,280.3	-1,100.0	4,411.0	1.48
11,319.0	90.13	341.90	7,036.1	4,367.7	-1,128.5	4,503.0	2.10
11,413.0	90.48	341.46	7,035.6	4,457.0	-1,158.1	4,597.0	0.60
11,507.0	88.64	341.72	7,036.3	4,546.1	-1,187.8	4,691.0	1.98
11,602.0	88.72	341.11	7,038.5	4,636.2	-1,218.0	4,786.0	0.65
11,696.0	89.69	343.13	7,039.8	4,725.6	-1,246.9	4,880.0	2.38
11,790.0	90.13	343.04	7,040.0	4,815.5	-1,274.3	4,973.9	0.48
11,884.0	90.57	342.78	7,039.4	4,905.4	-1,301.9	5,067.9	0.54
11,979.0	88.64	341.02	7,040.0	4,995.7	-1,331.4	5,162.9	2.75
12,073.0	88.72	341.99	7,042.2	5,084.8	-1,361.2	5,256.9	1.04
12,167.0	88.90	341.90	7,044.2	5,174.1	-1,390.3	5,350.9	0.21
12,262.0	89.96	342.42	7,045.1	5,264.6	-1,419.4	5,445.9	1.24
12,356.0	90.40	343.57	7,044.8	5,354.5	-1,446.9	5,539.8	1.31
12,450.0	88.81	342.78	7,045.5	5,444.4	-1,474.1	5,633.8	1.89
12,544.0	89.09	342.62	7,047.2	5,534.2	-1,502.1	5,727.8	0.34
12,638.0	88.29	340.32	7,049.3	5,623.3	-1,531.9	5,821.8	2.59
12,732.0	88.90	341.02	7,051.6	5,711.9	-1,563.0	5,915.7	0.99
12,826.0	89.52	341.37	7,052.9	5,800.9	-1,593.3	6,009.7	0.76
12,920.0	91.28	342.51	7,052.3	5,890.3	-1,622.5	6,103.7	2.23
13,014.0	92.24	342.95	7,049.4	5,980.0	-1,650.4	6,197.6	1.12
13,109.0	90.84	342.69	7,046.8	6,070.7	-1,678.4	6,292.6	1.50
13,203.0	91.28	342.25	7,045.1	6,160.3	-1,706.7	6,386.6	0.66
13,298.0	92.07	342.42	7,042.3	6,250.8	-1,735.5	6,481.5	0.85
13,392.0	89.87	338.73	7,040.7	6,339.4	-1,766.8	6,575.5	4.57
13,486.0	90.77	339.17	7,040.2	6,427.1	-1,800.6	6,669.3	1.07
13,580.0	91.63	342.95	7,038.2	6,516.0	-1,831.1	6,763.3	4.12
13,675.0	92.07	343.13	7,035.2	6,606.8	-1,858.8	6,858.2	0.50
13,769.0	89.96	342.34	7,033.5	6,696.6	-1,886.6	6,952.2	2.40
13,864.0	90.31	342.60	7,033.3	6,787.2	-1,915.3	7,047.2	0.46
13,958.0	90.13	342.34	7,032.9	6,876.8	-1,943.6	7,141.2	0.34
14,052.0	91.71	343.04	7,031.4	6,966.5	-1,971.5	7,235.1	1.84
14,148.0	92.07	342.16	7,028.2	7,058.1	-2,000.2	7,331.1	0.99
14,244.0	91.63	342.60	7,025.1	7,149.5	-2,029.3	7,427.0	0.65
14,338.0	91.45	341.90	7,022.6	7,239.0	-2,057.9	7,521.0	0.77
14,434.0	91.01	340.49	7,020.6	7,329.9	-2,088.9	7,617.0	1.54
14,530.0	92.68	342.51	7,017.5	7,420.9	-2,119.3	7,712.9	2.73
14,626.0	91.45	342.86	7,014.0	7,512.5	-2,147.9	7,808.8	1.33
14,721.0	92.15	342.69	7,011.0	7,603.2	-2,176.0	7,903.8	0.76
14,816.0	90.48	342.78	7,008.8	7,693.8	-2,204.2	7,998.7	1.76
14,911.0	90.50	342.36	7,008.0	7,784.5	-2,232.6	8,093.7	0.44
15,005.0	90.94	341.61	7,006.8	7,873.9	-2,261.7	8,187.7	0.92
15,101.0	91.63	342.78	7,004.7	7,965.2	-2,291.0	8,283.7	1.41
15,197.0	90.22	340.67	7,003.1	8,056.4	-2,321.1	8,379.7	2.64
15,292.0	90.66	340.49	7,002.4	8,146.0	-2,352.7	8,474.6	0.50



EOW Completion Report



Company: Antero Resources
Project: Harrison County West Virginia
Site: Bennett/Brutus Pad
Well: Bennett Unit 2H
Wellbore: Original Wellpath
Design: As Drilled

Local Co-ordinate Reference: Well Bennett Unit 2H
TVD Reference: Bennett 2H 1235 GL + 28 KB @ 1263.0usft
MD Reference: Bennett 2H 1235 GL + 28 KB @ 1263.0usft
North Reference: Grid
Survey Calculation Method: Minimum Curvature
Database: Oklahoma District

Survey

MD (usft)	Inc (°)	Azi (azimuth) (°)	TVD (usft)	N/S (usft)	E/W (usft)	V. Sec (usft)	DLeg (°/100usft)
15,386.0	90.13	341.63	7,001.8	8,234.9	-2,383.2	8,568.6	1.34
15,480.0	90.48	341.81	7,001.3	8,324.1	-2,412.7	8,662.6	0.42
15,575.0	90.73	341.63	7,000.3	8,414.3	-2,442.5	8,757.6	0.32
15,669.0	91.10	341.46	6,998.8	8,503.5	-2,472.3	8,851.6	0.43
15,763.0	91.28	342.95	6,996.8	8,593.0	-2,501.0	8,945.6	1.60
15,857.0	89.69	341.99	6,996.0	8,682.6	-2,529.3	9,039.6	1.98
15,952.0	89.60	342.16	6,996.6	8,773.0	-2,558.5	9,134.6	0.20
16,046.0	90.75	342.86	6,996.3	8,862.6	-2,586.8	9,228.6	1.43
16,140.0	90.92	343.13	6,994.9	8,952.5	-2,614.3	9,322.5	0.34
16,234.0	91.01	342.51	6,993.4	9,042.3	-2,642.0	9,416.5	0.67
16,243.0	90.75	342.60	6,993.2	9,050.9	-2,644.7	9,425.5	3.06
16,298.0	90.75	342.60	6,992.5	9,103.4	-2,661.2	9,480.5	0.00

Design Annotations

Measured Depth (usft)	Vertical Depth (usft)	Local Coordinates		Comment
		+N/-S (usft)	+E/-W (usft)	
6,558.0	6,551.6	26.7	15.2	Middlesex
6,767.0	6,731.9	105.8	83.1	Burkett
6,801.0	6,759.1	124.4	91.4	Tully
7,120.0	6,945.3	372.5	132.2	Marcellus

Checked By: _____ Approved By: _____ Date: _____

RECEIVED
 JUN 08 2015
 WV GEOLOGICAL SURVEY
 MORGANTOWN, WV