



Antero Resources
 Nellie Unit 2H
 Harrison County West Virginia
 Northing: 14254504.12
 Easting: 1764874.96
 As Drilled

WELL DETAILS: Nellie Unit 2H

Ground Level	1376.0
+N/S +E/W	Northing 1764874.96 Easting 14254504.12
0.0	0.0
Latitude	39° 15' 12.202" N
Longitude	80° 33' 37.259" W
Sit	

REFERENCE INFORMATION
 Coordinates (N/E) Reference: Well Nellie Unit 2H, Grid North
 Vertical (TVD) Reference: Nellie Unit 2H, 02, 1319' * 24" RW @ 1400' Depth
 Measured Depth Reference: Nellie Unit 2H, 02, 1319' * 24" RW @ 1400' Depth
 Completion: Marcellus, Etanum, Conasaugh

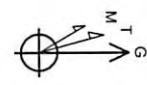
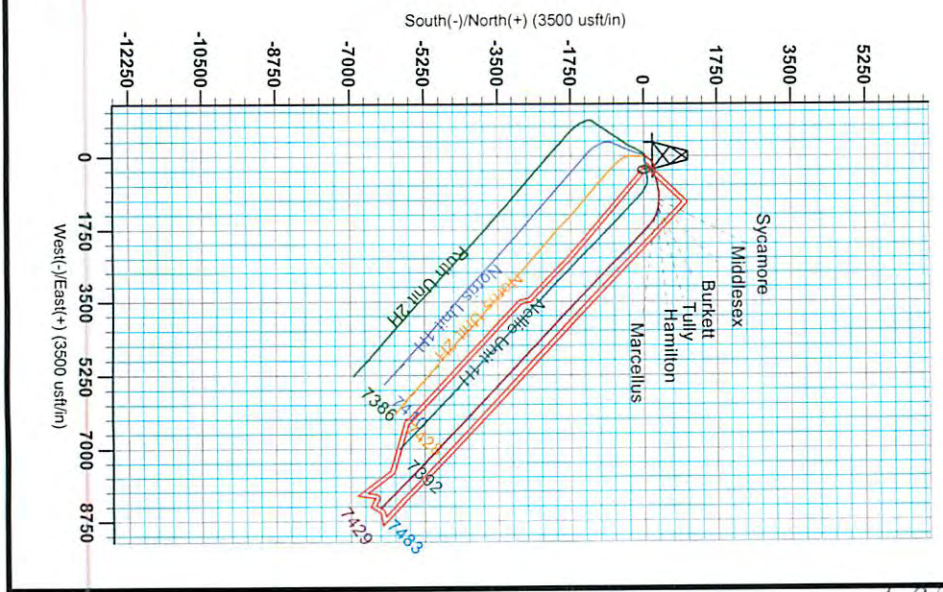
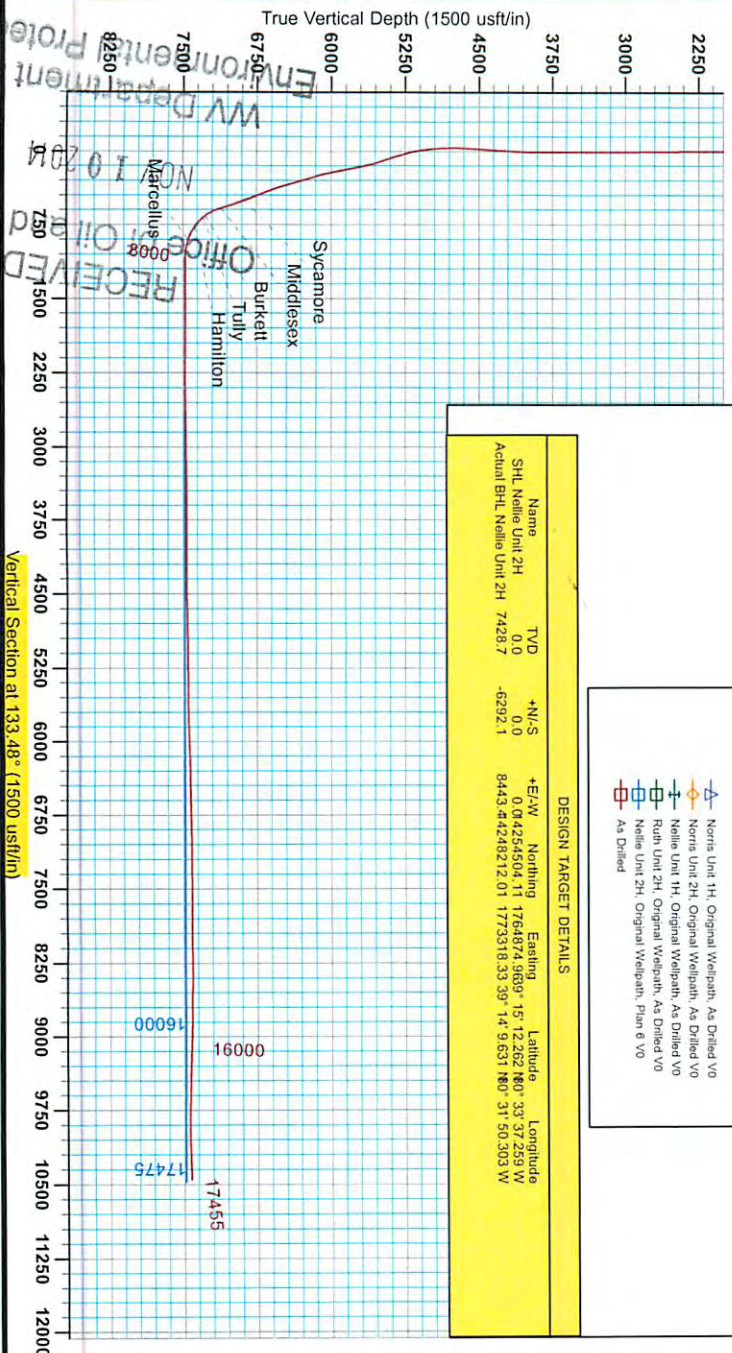
Scientific Drilling
 Genie Lightfoot
 Scientific Drilling
 421 South Eagle Lane
 Oklahoma City Oklahoma
 405-787-3663

LEGEND

- Norris Unit 1H, Original Wellpath, As Drilled VO
- Norris Unit 2H, Original Wellpath, As Drilled VO
- Nellie Unit 1H, Original Wellpath, As Drilled VO
- Ruin Unit 2H, Original Wellpath, As Drilled VO
- Nellie Unit 2H, Original Wellpath, Plan 6 VO
- As Drilled

DESIGN TARGET DETAILS

Name	TVD	+N/S	+E/W	Northing	Easting	Latitude	Longitude
SHL Nellie Unit 2H	0.0	0.0	0.0	0.0	0.0	0.0	0.0
Actual BHL Nellie Unit 2H	7428.7	-6292.1	8443.4	44248212.01	1773318.33	39° 14' 9.631" N	80° 31' 50.303" W



To convert Magnetic North to Grid, Subtract 8.67°
 To convert True North to Grid, Subtract 0.28°

Azimuths to Grid North
 True North: -0.28°
 Magnetic North: -8.87°

Magnetic Field
 Strength: 52346.66 Gauss
 Date: 8/19/2013
 Model: IGRF2010

Environment Protection
 WV Department of
 Environmental Protection
 RECEIVED
 Office of Oil and Gas
 NOV 10 2014
 Marcellus

Vertical Section at 133.48° (1500 usft/in)

33-05687

33-05687



Antero Resources

Harrison County West Virginia
Ruth/Norris/Nellie/Ford Pad
Nellie Unit 2H
Original Wellpath

Design: As Drilled

EOW Completion Report

13 June, 2014



NOV 11 2014
Scientific Drilling

RECEIVED
Office of Oil and Gas
WV Department of
Environmental Protection

11/28/2014

33-05687



EOW Completion Report



Company:	Antero Resources	Local Co-ordinate Reference:	Well Nellie Unit 2H
Project:	Harrison County West Virginia	TVD Reference:	Nellie Unit 2H GL 1376' + 24' RKB @ 1400.0usft
Site:	Ruth/Norris/Nellie/Ford Pad	MD Reference:	Nellie Unit 2H GL 1376' + 24' RKB @ 1400.0usft
Well:	Nellie Unit 2H	North Reference:	Grid
Wellbore:	Original Wellpath	Survey Calculation Method:	Minimum Curvature
Design:	As Drilled	Database:	Oklahoma District

Project	Harrison County West Virginia, Harrison County, USA		
Map System:	Universal Transverse Mercator (US Survey Fee	System Datum:	Mean Sea Level
Geo Datum:	NAD 1927 (NADCON CONUS)		
Map Zone:	Zone 17N (84 W to 78 W)		

Site	Ruth/Norris/Nellie/Ford Pad				
Site Position:		Northing:	14,254,530.66 usft	Latitude:	39° 15' 12.526 N
From:	Map	Easting:	1,764,845.07 usft	Longitude:	80° 33' 37.638 W
Position Uncertainty:	2.0 usft	Slot Radius:	13-3/16"	Grid Convergence:	0.28 °

Well	Nellie Unit 2H, Marcellus					
Well Position	+N/-S	0.0 usft	Northing:	14,254,504.12 usft	Latitude:	39° 15' 12.262 N
	+E/-W	0.0 usft	Easting:	1,764,874.96 usft	Longitude:	80° 33' 37.259 W
Position Uncertainty		2.0 usft	Wellhead Elevation:	1,400.0 usft	Ground Level:	1,376.0 usft

Wellbore	Original Wellpath				
-----------------	-------------------	--	--	--	--

Magnetics	Model Name	Sample Date	Declination (°)	Dip Angle (°)	Field Strength (nT)
	IGRF2010	8/19/2013	-8.59	66.83	52,349

Design	As Drilled				
---------------	------------	--	--	--	--

Audit Notes:					
Version:	1.0	Phase:	ACTUAL	Tie On Depth:	0.0
Vertical Section:	Depth From (TVD) (usft)	+N/-S (usft)	+E/-W (usft)	Direction (°)	
	0.0	0.0	0.0	133.48	

Survey Program	Date 6/13/2014				
From (usft)	To (usft)	Survey (Wellbore)	Tool Name	Description	
100.0	7,087.0	Survey #6 Def Gyro To KOP (Original Wel	SDI Standard Keeper	Scientific Drilling Intl. Standard Wireline Keeper	
7,200.0	17,455.0	Survey #7 MWD (Original Wellpath)	MWD SDI	MWD - Standard ver 1.0.1	

MD (usft)	Inc (°)	Azi (azimuth) (°)	TVD (usft)	N/S (usft)	E/W (usft)	V. Sec (usft)	DLeg (°/100usft)
0.0	0.00	0.00	0.0	0.0	0.0	0.0	0.00
100.0	0.09	347.92	100.0	0.1	0.0	-0.1	0.09
200.0	0.05	89.10	200.0	0.2	0.0	-0.1	0.11
300.0	0.05	131.40	300.0	0.1	0.1	0.0	0.04
400.0	0.13	148.48	400.0	0.0	0.2	0.1	0.08
500.0	0.10	118.20	500.0	-0.1	0.3	0.3	0.07
600.0	0.11	134.89	600.0	-0.2	0.5	0.5	0.03
700.0	0.13	174.85	700.0	-0.4	0.5	0.7	0.08
800.0	0.06	182.23	800.0	-0.6	0.5	0.8	0.07
900.0	0.09	209.30	900.0	-0.7	0.5	0.9	0.05
1,000.0	0.11	137.53	1,000.0	-0.9	0.5	1.0	0.12

RECEIVED
Office of Oil and Gas
NOV 18 2014
WV Department of Environmental Protection

33-05687



EOW Completion Report



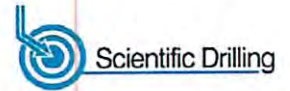
Company:	Antero Resources	Local Co-ordinate Reference:	Well Nellie Unit 2H
Project:	Harrison County West Virginia	TVD Reference:	Nellie Unit 2H GL 1376' + 24' RKB @ 1400.0usft
Site:	Ruth/Norris/Nellie/Ford Pad	MD Reference:	Nellie Unit 2H GL 1376' + 24' RKB @ 1400.0usft
Well:	Nellie Unit 2H	North Reference:	Grid
Wellbore:	Original Wellpath	Survey Calculation Method:	Minimum Curvature
Design:	As Drilled	Database:	Oklahoma District

Survey									
MD (usft)	Inc (°)	Azi (azimuth) (°)	TVD (usft)	N/S (usft)	E/W (usft)	V. Sec (usft)	DLeg (°/100usft)		
1,100.0	0.15	145.29	1,100.0	-1.0	0.7	1.2	0.04		
1,200.0	0.13	152.65	1,200.0	-1.2	0.8	1.4	0.03		
1,300.0	0.15	165.42	1,300.0	-1.5	0.9	1.7	0.04		
1,400.0	0.15	155.67	1,400.0	-1.7	1.0	1.9	0.03		
1,500.0	0.18	163.89	1,500.0	-2.0	1.1	2.1	0.04		
1,600.0	0.20	153.80	1,600.0	-2.3	1.2	2.4	0.04		
1,700.0	0.10	155.51	1,700.0	-2.5	1.3	2.7	0.10		
1,800.0	0.13	188.17	1,800.0	-2.7	1.3	2.8	0.07		
1,900.0	0.25	173.47	1,900.0	-3.0	1.3	3.1	0.13		
2,000.0	0.20	192.31	2,000.0	-3.4	1.3	3.3	0.09		
2,100.0	0.24	170.41	2,100.0	-3.8	1.3	3.6	0.09		
2,200.0	0.10	174.12	2,200.0	-4.1	1.4	3.8	0.14		
2,300.0	0.32	173.29	2,300.0	-4.5	1.4	4.1	0.22		
2,400.0	0.09	149.17	2,400.0	-4.8	1.5	4.4	0.24		
2,500.0	0.15	139.35	2,500.0	-5.0	1.6	4.6	0.06		
2,600.0	0.26	101.13	2,600.0	-5.1	1.9	4.9	0.17		
2,700.0	0.61	85.42	2,700.0	-5.1	2.7	5.5	0.37		
2,800.0	0.45	83.06	2,800.0	-5.0	3.6	6.1	0.16		
2,900.0	0.38	97.52	2,900.0	-5.0	4.3	6.6	0.13		
3,000.0	0.58	88.24	3,000.0	-5.1	5.1	7.2	0.21		
3,100.0	0.39	111.13	3,100.0	-5.2	6.0	7.9	0.27		
3,200.0	0.16	119.87	3,200.0	-5.4	6.4	8.3	0.23		
3,300.0	0.29	102.94	3,300.0	-5.5	6.8	8.7	0.14		
3,400.0	0.22	141.48	3,400.0	-5.7	7.1	9.1	0.18		
3,500.0	0.22	141.84	3,500.0	-6.0	7.4	9.5	0.00		
3,600.0	0.14	174.38	3,600.0	-6.3	7.5	9.8	0.13		
3,700.0	0.13	142.69	3,700.0	-6.5	7.6	10.0	0.07		
3,800.0	0.20	104.65	3,800.0	-6.6	7.8	10.2	0.13		
3,900.0	0.18	76.57	3,900.0	-6.6	8.1	10.5	0.09		
4,000.0	2.95	8.98	3,999.9	-4.0	8.7	9.1	2.89		
4,100.0	6.35	12.26	4,099.6	3.9	10.3	4.8	3.41		
4,200.0	9.33	20.90	4,198.6	16.9	14.3	-1.2	3.20		
4,300.0	12.02	29.23	4,296.9	33.6	22.3	-6.9	3.09		
4,400.0	15.44	30.45	4,394.0	54.1	34.1	-12.5	3.43		
4,500.0	18.58	31.10	4,489.6	79.2	49.1	-18.9	3.15		
4,600.0	19.39	31.73	4,584.2	107.0	66.1	-25.7	0.84		
4,700.0	19.32	37.66	4,678.6	134.2	84.9	-30.7	1.97		
4,800.0	20.43	43.82	4,772.6	159.9	107.1	-32.3	2.37		
4,900.0	21.74	48.98	4,865.9	184.7	133.2	-30.4	2.27		
5,000.0	23.08	53.91	4,958.4	208.4	163.0	-25.1	2.31		
5,100.0	23.73	61.24	5,050.2	229.6	196.5	-15.4	2.98		
5,200.0	24.00	71.34	5,141.7	245.8	233.4	0.2	4.09		
5,300.0	25.95	78.37	5,232.3	256.7	274.1	22.3	3.55		
5,400.0	25.29	83.88	5,322.5	263.4	316.8	48.6	2.47		

33.05687



EOW Completion Report



Company:	Antero Resources	Local Co-ordinate Reference:	Well Nellie Unit 2H
Project:	Harrison County West Virginia	TVD Reference:	Nellie Unit 2H GL 1376' + 24' RKB @ 1400.0usft
Site:	Ruth/Norris/Nellie/Ford Pad	MD Reference:	Nellie Unit 2H GL 1376' + 24' RKB @ 1400.0usft
Well:	Nellie Unit 2H	North Reference:	Grid
Wellbore:	Original Wellpath	Survey Calculation Method:	Minimum Curvature
Design:	As Drilled	Database:	Oklahoma District

MD (usft)	Inc (°)	Azi (azimuth) (°)	TVD (usft)	N/S (usft)	E/W (usft)	V. Sec (usft)	DLeg (°/100usft)
5,500.0	23.99	89.27	5,413.4	265.9	358.4	77.0	2.59
5,600.0	24.17	93.67	5,504.7	264.9	399.1	107.3	1.80
5,700.0	22.47	85.41	5,596.6	265.1	438.6	135.8	3.68
5,800.0	21.88	74.52	5,689.2	271.6	475.6	158.2	4.15
5,900.0	20.73	72.57	5,782.4	281.9	510.5	176.4	1.35
6,000.0	22.58	71.82	5,875.3	293.2	545.6	194.2	1.87
6,100.0	22.59	73.02	5,967.6	304.8	582.2	212.8	0.46
6,200.0	23.90	75.53	6,059.5	315.5	620.2	233.0	1.64
6,300.0	26.16	81.79	6,150.1	323.7	661.7	257.4	3.48
6,400.0	28.18	81.50	6,239.1	330.3	706.8	285.6	2.02
6,500.0	28.13	76.49	6,327.3	339.3	753.1	313.0	2.36
6,600.0	28.10	74.92	6,415.5	350.9	798.8	338.1	0.74
6,700.0	28.20	77.20	6,503.7	362.3	844.6	363.5	1.08
6,800.0	28.54	84.18	6,591.7	370.0	891.4	392.2	3.33
6,900.0	28.48	91.31	6,679.6	371.8	939.0	425.5	3.40
7,000.0	26.48	95.36	6,768.3	369.2	985.0	460.7	2.74
7,087.0	26.70	94.00	6,846.1	366.0	1,023.8	491.0	0.74
7,120.0	26.41	92.88	6,875.6	365.1	1,038.6	502.3	1.75
Sycamore							
7,200.0	25.76	90.07	6,947.5	364.2	1,073.7	528.5	1.75
7,273.0	24.18	92.62	7,013.6	363.5	1,104.5	551.3	2.62
7,320.0	22.34	94.20	7,056.8	362.4	1,123.1	565.5	4.13
7,367.0	22.25	94.90	7,100.3	361.0	1,140.8	579.4	0.60
7,379.0	22.59	94.57	7,111.4	360.6	1,145.4	583.0	2.99
Middlesex							
7,414.0	23.57	93.67	7,143.6	359.7	1,159.1	593.6	2.99
7,444.0	27.35	94.73	7,170.7	358.7	1,171.9	603.5	12.69
7,474.0	30.60	97.28	7,196.9	357.2	1,186.4	615.1	11.59
7,504.0	33.68	98.16	7,222.3	355.0	1,202.2	628.0	10.38
7,534.0	37.46	99.21	7,246.7	352.4	1,219.4	642.4	12.76
7,564.0	39.57	102.64	7,270.2	348.8	1,237.8	658.1	10.01
7,567.0	39.80	102.90	7,272.5	348.4	1,239.6	659.8	9.32
Burkett							
7,594.0	41.86	105.10	7,292.9	344.1	1,256.8	675.1	9.32
7,596.0	42.07	105.34	7,294.4	343.8	1,258.0	676.3	13.27
Tully							
7,624.0	45.11	108.44	7,314.7	338.2	1,276.5	693.6	13.27
7,654.0	49.33	106.15	7,335.1	331.6	1,297.5	713.3	15.14
7,684.0	52.32	105.80	7,354.0	325.2	1,319.9	733.9	10.01
7,714.0	55.22	105.36	7,371.8	318.7	1,343.2	753.3	9.74
7,730.0	56.91	106.65	7,380.7	315.1	1,356.0	767.1	12.48
Hamilton							
7,744.0	58.39	107.74	7,388.2	311.6	1,367.3	777.7	12.48
7,774.0	62.17	109.76	7,403.0	303.2	1,391.9	801.2	13.89
7,804.0	64.81	112.48	7,416.4	293.5	1,416.9	826.2	11.97

33.05687



EOW Completion Report



Company:	Antero Resources	Local Co-ordinate Reference:	Well Nellie Unit 2H
Project:	Harrison County West Virginia	TVD Reference:	Nellie Unit 2H GL 1376' + 24' RKB @ 1400.0usft
Site:	Ruth/Norris/Nellie/Ford Pad	MD Reference:	Nellie Unit 2H GL 1376' + 24' RKB @ 1400.0usft
Well:	Nellie Unit 2H	North Reference:	Grid
Wellbore:	Original Wellpath	Survey Calculation Method:	Minimum Curvature
Design:	As Drilled	Database:	Oklahoma District

MD (usft)	Inc (°)	Azi (azimuth) (°)	TVD (usft)	N/S (usft)	E/W (usft)	V. Sec (usft)	DLeg (°/100usft)
7,834.0	67.01	112.66	7,428.7	283.0	1,442.2	851.8	7.35
7,864.0	70.08	115.21	7,439.7	271.7	1,467.7	878.1	12.93
7,888.0	71.83	118.88	7,447.5	261.4	1,487.9	899.8	16.18
Marcellus							
7,894.0	72.28	119.78	7,449.3	258.6	1,492.9	905.4	16.18
7,924.0	75.27	121.10	7,457.7	244.0	1,517.8	933.4	10.82
7,954.0	77.47	123.47	7,464.8	228.4	1,542.4	962.0	10.62
7,984.0	80.46	124.17	7,470.5	212.0	1,566.9	991.1	10.23
8,014.0	82.39	125.84	7,475.0	195.0	1,591.2	1,020.4	8.47
8,044.0	85.65	128.39	7,478.1	177.0	1,614.9	1,050.0	13.77
8,102.0	91.45	132.96	7,479.6	139.2	1,658.9	1,107.9	12.73
8,166.0	90.84	130.50	7,478.3	96.6	1,706.6	1,171.9	3.96
8,260.0	89.25	133.05	7,478.2	34.0	1,776.7	1,265.8	3.20
8,354.0	89.34	132.43	7,479.4	-29.8	1,845.8	1,359.8	0.67
8,448.0	89.60	133.58	7,480.3	-93.9	1,914.5	1,453.8	1.25
8,542.0	89.96	134.37	7,480.6	-159.2	1,982.1	1,547.8	0.92
8,636.0	89.87	133.31	7,480.8	-224.3	2,049.9	1,641.8	1.13
8,730.0	90.40	131.20	7,480.6	-287.5	2,119.5	1,735.7	2.31
8,824.0	90.22	131.82	7,480.0	-349.8	2,189.9	1,829.7	0.69
8,918.0	89.52	131.82	7,480.3	-412.4	2,260.0	1,923.7	0.74
9,012.0	89.78	133.23	7,480.8	-476.0	2,329.2	2,017.6	1.53
9,106.0	88.90	135.42	7,481.9	-541.6	2,396.5	2,111.6	2.51
9,200.0	88.46	135.16	7,484.1	-608.4	2,462.6	2,205.5	0.54
9,294.0	89.87	136.21	7,485.4	-675.7	2,528.2	2,299.5	1.87
9,388.0	91.80	138.15	7,484.1	-744.6	2,592.1	2,393.2	2.91
9,482.0	91.71	134.63	7,481.2	-812.6	2,656.9	2,487.1	3.74
9,576.0	91.01	132.52	7,479.0	-877.4	2,725.0	2,581.0	2.36
9,670.0	91.10	132.08	7,477.2	-940.7	2,794.5	2,675.0	0.48
9,764.0	91.10	131.20	7,475.4	-1,003.1	2,864.7	2,768.9	0.94
9,858.0	90.48	132.96	7,474.1	-1,066.1	2,934.5	2,862.9	1.98
9,952.0	89.60	131.82	7,474.1	-1,129.5	3,003.9	2,956.9	1.53
10,046.0	91.10	134.19	7,473.5	-1,193.6	3,072.6	3,050.9	2.98
10,140.0	91.63	132.79	7,471.3	-1,258.2	3,140.8	3,144.8	1.59
10,231.0	90.57	134.90	7,469.5	-1,321.3	3,206.4	3,235.8	2.59
10,321.0	90.57	134.37	7,468.6	-1,384.5	3,270.5	3,325.8	0.59
10,412.0	90.84	134.28	7,467.5	-1,448.1	3,335.6	3,416.8	0.31
10,503.0	90.57	133.40	7,466.4	-1,511.1	3,401.2	3,507.7	1.01
10,594.0	90.31	134.72	7,465.7	-1,574.4	3,466.6	3,598.7	1.48
10,684.0	90.31	134.37	7,465.2	-1,637.5	3,530.7	3,688.7	0.39
10,775.0	89.43	131.38	7,465.4	-1,699.4	3,597.4	3,779.7	3.43
10,866.0	89.69	131.20	7,466.1	-1,759.5	3,665.8	3,870.6	0.35
10,957.0	89.69	134.10	7,466.6	-1,821.1	3,732.7	3,961.6	3.19
11,048.0	89.78	136.13	7,467.0	-1,885.6	3,796.9	4,052.6	2.23
11,139.0	89.43	135.60	7,467.6	-1,950.9	3,860.3	4,143.5	0.70
11,230.0	90.04	135.25	7,468.1	-2,015.7	3,924.2	4,234.4	0.77

RECEIVED
Office of Oil and Gas
NOV 28 2014
WV Department of Environmental Protection

33-05687



EOW Completion Report



Company:	Antero Resources	Local Co-ordinate Reference:	Well Nellie Unit 2H
Project:	Harrison County West Virginia	TVD Reference:	Nellie Unit 2H GL 1376' + 24' RKB @ 1400.0usft
Site:	Ruth/Norris/Nellie/Ford Pad	MD Reference:	Nellie Unit 2H GL 1376' + 24' RKB @ 1400.0usft
Well:	Nellie Unit 2H	North Reference:	Grid
Wellbore:	Original Wellpath	Survey Calculation Method:	Minimum Curvature
Design:	As Drilled	Database:	Oklahoma District

MD (usft)	Inc (°)	Azi (azimuth) (°)	TVD (usft)	N/S (usft)	E/W (usft)	V. Sec (usft)	DLeg (°/100usft)
11,324.0	90.57	131.29	7,467.6	-2,080.1	3,992.6	4,328.4	4.25
11,418.0	90.92	130.41	7,466.3	-2,141.6	4,063.7	4,422.3	1.01
11,512.0	91.28	132.70	7,464.5	-2,203.9	4,134.0	4,516.2	2.47
11,606.0	91.01	134.54	7,462.7	-2,268.8	4,202.0	4,610.2	1.98
11,698.0	91.01	133.58	7,461.0	-2,332.7	4,268.1	4,702.2	1.04
11,791.0	90.40	132.50	7,459.9	-2,396.2	4,336.1	4,795.2	1.33
11,885.0	90.92	133.49	7,458.8	-2,460.3	4,404.9	4,889.2	1.19
11,980.0	91.10	133.49	7,457.1	-2,525.7	4,473.8	4,984.1	0.19
12,074.0	89.96	134.02	7,456.3	-2,590.7	4,541.7	5,078.1	1.34
12,168.0	90.22	134.98	7,456.1	-2,656.6	4,608.7	5,172.1	1.06
12,262.0	90.40	135.07	7,455.6	-2,723.1	4,675.1	5,266.1	0.21
12,356.0	90.84	134.98	7,454.6	-2,789.5	4,741.6	5,360.1	0.48
12,450.0	90.92	130.32	7,453.1	-2,853.2	4,810.7	5,454.0	4.96
12,543.0	90.84	129.45	7,451.7	-2,912.8	4,882.0	5,546.8	0.94
12,637.0	90.75	130.32	7,450.4	-2,973.1	4,954.2	5,640.6	0.93
12,731.0	90.40	134.19	7,449.5	-3,036.3	5,023.7	5,734.6	4.13
12,825.0	89.34	135.86	7,449.7	-3,102.8	5,090.2	5,828.5	2.10
12,919.0	91.98	135.69	7,448.6	-3,170.1	5,155.7	5,922.4	2.81
13,013.0	92.59	136.30	7,444.8	-3,237.7	5,221.0	6,016.3	0.92
13,107.0	92.15	133.40	7,441.0	-3,303.9	5,287.5	6,110.2	3.12
13,201.0	91.98	132.43	7,437.6	-3,367.9	5,356.3	6,204.1	1.05
13,295.0	91.63	131.82	7,434.6	-3,430.9	5,426.0	6,298.0	0.75
13,388.0	90.48	132.61	7,432.9	-3,493.4	5,494.9	6,391.0	1.50
13,482.0	91.45	133.93	7,431.3	-3,557.8	5,563.3	6,485.0	1.74
13,576.0	91.19	132.87	7,429.1	-3,622.4	5,631.6	6,578.9	1.16
13,670.0	90.48	132.35	7,427.8	-3,686.0	5,700.8	6,672.9	0.94
13,764.0	91.54	133.75	7,426.1	-3,750.2	5,769.4	6,766.9	1.87
13,858.0	91.45	133.23	7,423.7	-3,814.8	5,837.6	6,860.9	0.56
13,953.0	90.48	134.37	7,422.1	-3,880.6	5,906.2	6,955.8	1.58
14,047.0	90.75	134.19	7,421.1	-3,946.2	5,973.5	7,049.8	0.35
14,141.0	91.01	132.52	7,419.6	-4,010.7	6,041.8	7,143.8	1.80
14,235.0	89.69	133.84	7,419.0	-4,075.0	6,110.3	7,237.8	1.99
14,329.0	90.13	133.66	7,419.2	-4,140.0	6,178.2	7,331.8	0.51
14,423.0	90.40	134.10	7,418.8	-4,205.2	6,246.0	7,425.8	0.55
14,517.0	90.48	133.49	7,418.0	-4,270.3	6,313.9	7,519.8	0.65
14,612.0	90.75	133.93	7,417.0	-4,335.9	6,382.5	7,614.8	0.54
14,705.0	88.81	133.84	7,417.4	-4,400.4	6,449.5	7,707.8	2.09
14,799.0	90.04	134.46	7,418.3	-4,465.8	6,517.0	7,801.8	1.47
14,893.0	90.57	135.25	7,417.8	-4,532.1	6,583.6	7,895.7	1.01
14,987.0	89.87	133.58	7,417.5	-4,597.9	6,650.8	7,989.7	1.93
15,081.0	90.57	132.70	7,417.1	-4,662.2	6,719.3	8,083.7	1.20
15,175.0	90.75	131.56	7,416.0	-4,725.2	6,789.1	8,177.7	1.23
15,269.0	90.31	133.23	7,415.1	-4,788.6	6,858.5	8,271.7	1.84
15,364.0	91.28	134.24	7,413.8	-4,854.3	6,927.1	8,366.6	1.47



33-05687

EOW Completion Report



Company:	Antero Resources	Local Co-ordinate Reference:	Well Nellie Unit 2H
Project:	Harrison County West Virginia	TVD Reference:	Nellie Unit 2H GL 1376' + 24' RKB @ 1400.0usft
Site:	Ruth/Norris/Nellie/Ford Pad	MD Reference:	Nellie Unit 2H GL 1376' + 24' RKB @ 1400.0usft
Well:	Nellie Unit 2H	North Reference:	Grid
Wellbore:	Original Wellpath	Survey Calculation Method:	Minimum Curvature
Design:	As Drilled	Database:	Oklahoma District

MD (usft)	Inc (°)	Azi (azimuth) (°)	TVD (usft)	N/S (usft)	E/W (usft)	V. Sec (usft)	DLeg (°/100usft)
15,456.0	87.28	130.82	7,415.0	-4,916.4	6,994.9	8,458.6	5.72
15,551.0	88.56	131.93	7,418.4	-4,979.2	7,066.1	8,553.5	1.78
15,644.0	88.49	133.57	7,420.8	-5,042.3	7,134.4	8,646.4	1.76
15,738.0	89.87	133.66	7,422.2	-5,107.1	7,202.4	8,740.4	1.47
15,832.0	89.96	131.99	7,422.3	-5,171.0	7,271.4	8,834.4	1.78
15,926.0	88.69	130.75	7,423.4	-5,233.2	7,341.9	8,928.3	1.89
16,020.0	88.42	131.68	7,425.8	-5,295.1	7,412.6	9,022.2	1.03
16,114.0	88.25	134.82	7,428.5	-5,359.4	7,481.0	9,116.2	3.34
16,208.0	87.79	134.94	7,431.8	-5,425.7	7,547.6	9,210.1	0.51
16,303.0	88.29	135.51	7,435.0	-5,493.1	7,614.5	9,305.0	0.80
16,396.0	88.81	134.63	7,437.4	-5,558.9	7,680.1	9,397.9	1.10
16,490.0	89.09	132.97	7,439.1	-5,624.0	7,747.9	9,491.9	1.79
16,585.0	89.70	133.65	7,440.1	-5,689.2	7,817.1	9,586.9	0.96
16,678.0	90.03	133.63	7,440.3	-5,753.3	7,884.4	9,679.9	0.36
16,772.0	88.99	133.70	7,441.1	-5,818.2	7,952.4	9,773.9	1.11
16,866.0	89.09	133.79	7,442.7	-5,883.2	8,020.3	9,867.9	0.14
16,960.0	90.44	133.75	7,443.1	-5,948.2	8,088.1	9,961.9	1.44
17,053.0	90.60	133.43	7,442.2	-6,012.4	8,155.5	10,054.9	0.38
17,147.0	91.24	132.77	7,440.7	-6,076.6	8,224.1	10,148.8	0.98
17,241.0	91.68	132.96	7,438.3	-6,140.5	8,293.0	10,242.8	0.51
17,336.0	93.02	134.01	7,434.4	-6,205.8	8,361.9	10,337.7	1.79
17,397.0	93.09	134.48	7,431.2	-6,248.3	8,405.5	10,398.6	0.78
17,455.0	91.85	143.80	7,428.7	-6,292.1	8,443.4	10,456.2	16.20

Measured Depth (usft)	Vertical Depth (usft)	Local Coordinates		Comment
		+N/-S (usft)	+E/-W (usft)	
7,120.0	6,875.6	365.1	1,038.6	Sycamore
7,379.0	7,111.4	360.6	1,145.4	Middlesex
7,567.0	7,272.5	348.4	1,239.6	Burkett
7,596.0	7,294.4	343.8	1,258.0	Tully
7,730.0	7,380.7	315.1	1,356.0	Hamilton
7,888.0	7,447.5	261.4	1,487.9	Marcellus

Checked By: _____ Approved By: _____ Date: _____

RECEIVED
Office of Oil and Gas
NOV 10 2014