

7,122' to Bottom Hole

5,437' to Top Hole

TOP & BOTTOM HOLE LATITUDE 39 - 17 - 30

TOP & BOTTOM HOLE LONGITUDE 80 - 32 - 30

13,866' to Top Hole

4,164' to Bottom Hole

(⊙) Denotes Location of Well on United States Topographic Maps

I, the undersigned, hereby certify that this plat is correct to the best of my knowledge and belief and shows all the information required by law and the rules issued and prescribed by the Department of Environmental Protection.

Kenneth J. Plum, P.S. 2216

Antero Resources Well No. Ford Unit 1H Antero Resources Corporation

Notes: West Virginia Coordinate System of 1927, North Zone based upon Differential GPS Measurements. Well No. Ford Unit 1H Top Hole coordinates are N: 276,164.34' Latitude: 39°15'12.13" E: 1,699,744.72' Longitude: 80°33'37.07" Bottom Hole coordinates are N: 285,886.10' Latitude: 39°16'48.02" E: 1,698,059.95' Longitude: 80°33'59.95" UTM Zone 17, NAD 1983 Top Hole Coordinates N: 4,344,995.848m E: 537,954.096m Bottom Hole Coordinates N: 4,347,949.060m E: 537,391.490m Plat orientation and corner and well references are based upon the grid north meridian. Well location references are based upon the magnetic meridian.



Table with 4 columns: Par, Owner, DB/Pg, Acres. Lists Tax Map 301 and 321 parcels.

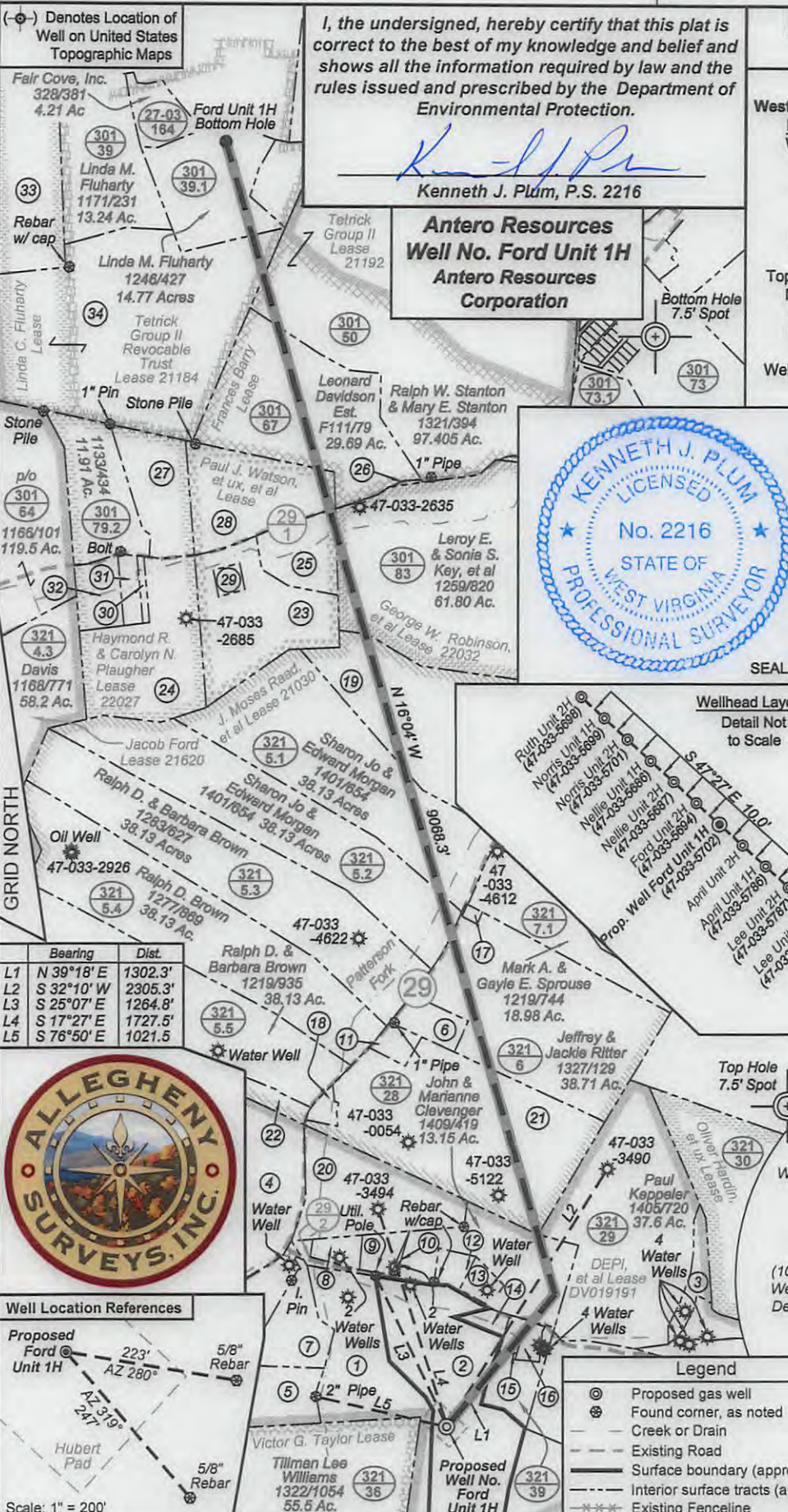
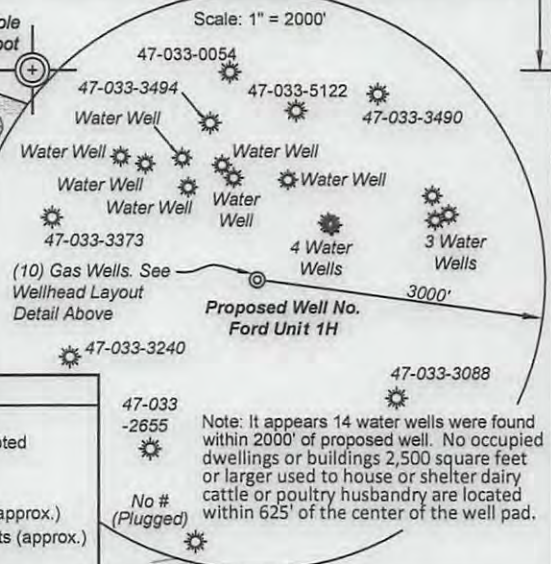
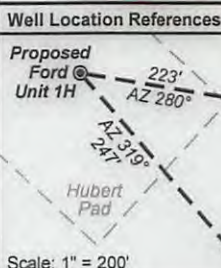


Table with 2 columns: Bearing, Dist. Lists bearings and distances for various points.



Legend table with symbols and descriptions: Proposed gas well, Found corner, Creek or Drain, Existing Road, Surface boundary, Interior surface tracts, Existing Fenceline.

FILE NO: 11-36-TM-12 DRAWING NO: 11-12 Ford 1H Well Plat SCALE: 1" = 1200' MINIMUM DEGREE OF ACCURACY: Submeter PROVEN SOURCE OF ELEVATION: WVDOT, Bridgeport, WV

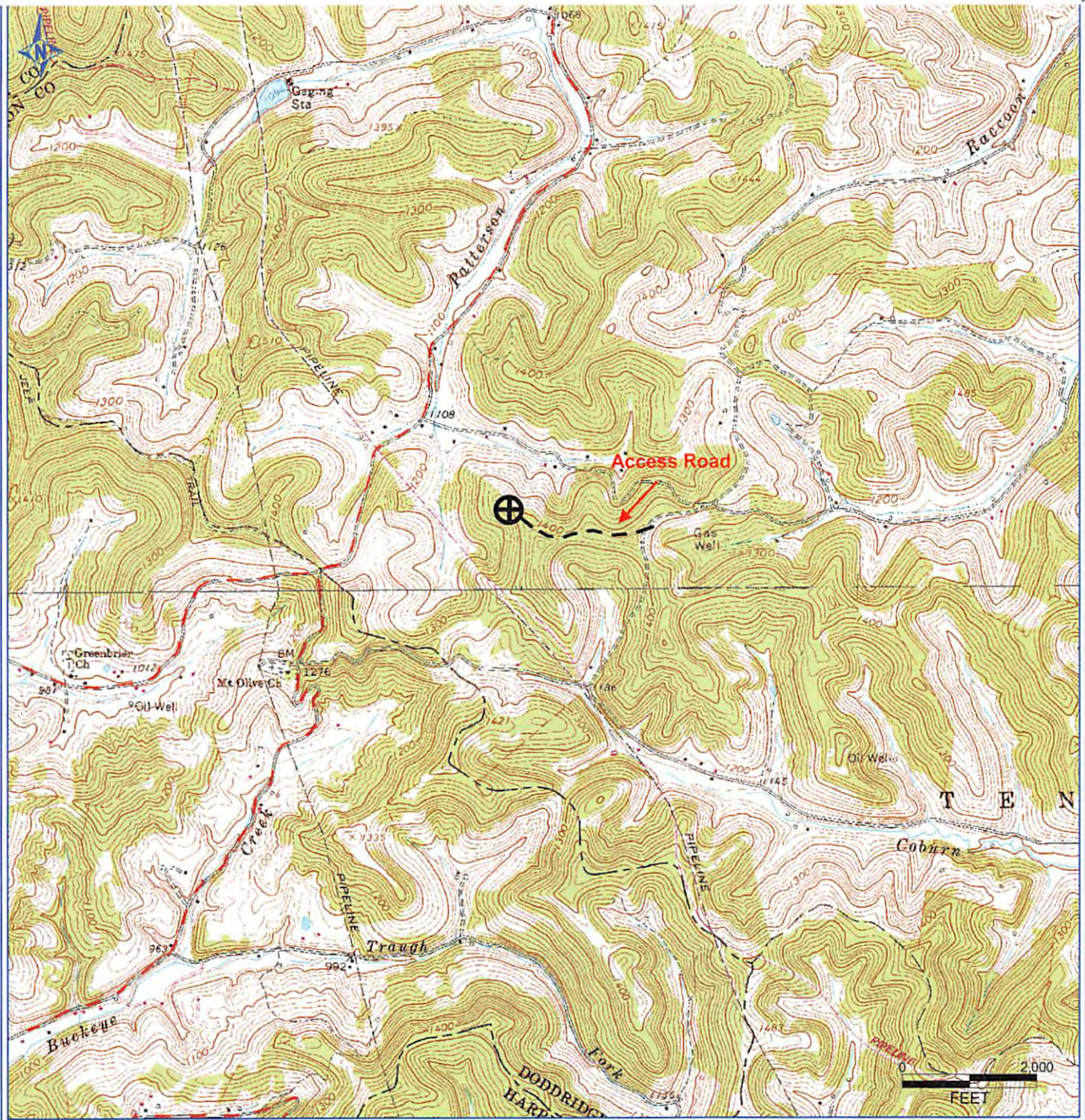
STATE OF WEST VIRGINIA DEPARTMENT OF ENVIRONMENTAL PROTECTION OIL AND GAS DIVISION

DATE: September 18 2013 OPERATOR'S WELL NO. Ford Unit 1H API WELL NO MOD 47 - 033 - 05702 H6A STATE COUNTY PERMIT

WELL TYPE: [] OIL [X] GAS [] LIQUID INJECTION [] WASTE DISPOSAL (IF GAS) PRODUCTION: [] STORAGE [] DEEP [X] SHALLOW LOCATION: ELEVATION: 1376' WATERSHED: Patterson Fork QUADRANGLE: Salem DISTRICT: Tenmile COUNTY: Harrison SURFACE OWNER: Hubert Jr. & Lorena Bland Paul J. Watson, et ux, et al ACREAGE: 28.50 70.866 ROYALTY OWNER: DEPI, et al; Tetrick Group II Revocable Trust; J. Moses Raad, et al LEASE NO: DV019191; 21030 ACREAGE: 283; 447; 40 PROPOSED WORK: [X] DRILL [] CONVERT [] DRILL DEEPER [X] FRACTURE OR STIMULATE [] PLUG OFF OLD FORMATION [X] PERFORATE NEW FORMATION [] OTHER PHYSICAL CHANGE IN WELL (SPECIFY) BHE - Modification [] PLUG AND ABANDON [] CLEAN OUT AND REPLUG TARGET FORMATION: Marcellus Shale ESTIMATED DEPTH: 7,700' TVD 17,500' MD

WELL OPERATOR: Antero Resources Corporation DESIGNATED AGENT: Dianna Stamper - CT Corporation System ADDRESS: 1625 17th Street Denver, CO 80202 ADDRESS: 5400 D Big Tyler Road Charleston, WV 25313

02/14/2014



PETRA 9/18/2012 4:24:38 PM

RECEIVED
Office of Oil and Gas
OCT 05 2012
WV Department of
Environmental Protection

Antero Resources Corporation

APPALACHIAN BASIN

Ford Unit 1H

Doddridge County



REMARKS
 QUADRANGLE: SALEM
 WATERSHED: PATTERSON FORK
 DISTRICT: TENMILE

Date: 9/18/2012