



Antero Resources
 Hildred Unit 2H
 Harrison County West Virginia
 Northing: 14243213.27
 Easting: 1766802.11
 As Drilled

WELL DETAILS: Hildred Unit 2H

+N/-S	+E/-W	Northing	Ground Level:	1405.0	Latitude	Longitude	Slot
0.0	0.0	14243213.27	Easting	1766802.1139° 13'	20.531 N80° 33'	13.460 W	

Genie Lightfoot
 10:35, June 30 2014

Scientific Drilling
 421 South Eagle Lane
 Oklahoma City, OK

PROJECT DETAILS: Harrison County West Virginia

Geodetic System: Universal Transverse Mercator (US Survey Feet)
 Datum: NAD 1927 (NADCON CONUS)
 Ellipsoid: Clarke 1866
 Zone: Zone 17N (84 W to 78 W)
 System Datum: Mean Sea Level

REFERENCE INFORMATION

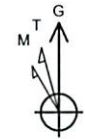
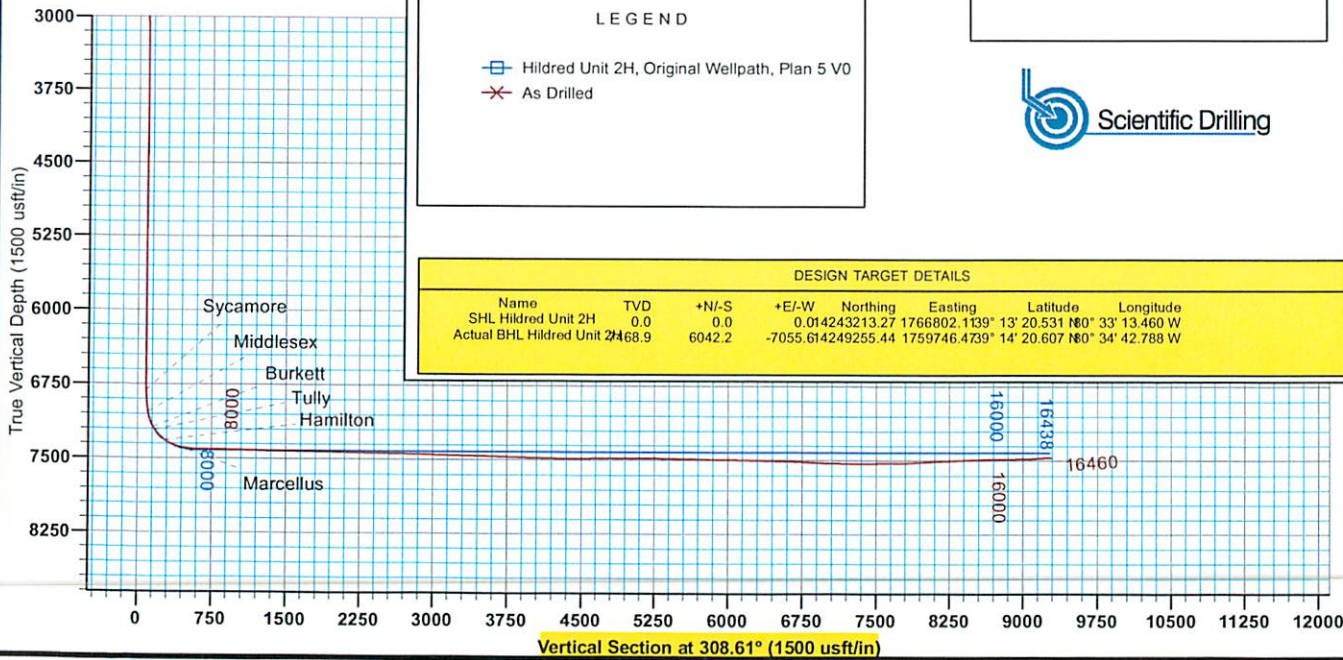
Co-ordinate (NE) Reference: Well Hildred Unit 2H, Grid North
 Vertical (TVD) Reference: Pattern 347, Hildred Unit 2H, OL 1405' ± 25' RKB @ 1430 Depth
 Section C/S Reference: Size (3.00), 3.00
 Measured Depth Reference: Pattern 347, Hildred Unit 2H, OL 1405' ± 25' RKB @ 1430 Depth
 Calculation Method: Minimum Curvature

LEGEND

- Hildred Unit 2H, Original Wellpath, Plan 5 V0
- ✕ As Drilled

DESIGN TARGET DETAILS

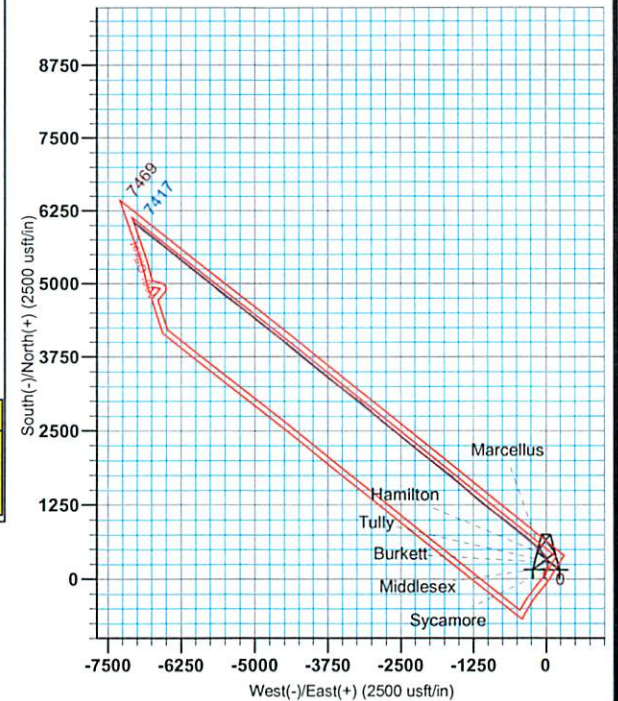
Name	TVD	+N/-S	+E/-W	Northing	Easting	Latitude	Longitude
SHL Hildred Unit 2H	0.0	0.0	0.014243213.27	1766802.1139° 13'	20.531 N80° 33'	13.460 W	
Actual BHL Hildred Unit 2H	6048.9	6042.2	-7055.614249255.44	1759746.4739° 14'	20.607 N80° 34'	42.788 W	



To convert Magnetic North to Grid, Subtract 8.89°
 To convert True North to Grid, Subtract 0.28°

Azimuths to Grid North
 True North: -0.28°
 Magnetic North: -8.89°

Magnetic Field
 Strength: 52268.1nT
 Dip Angle: 66.76°
 Date: 2/25/2014
 Model: IGRF2010



33.057109

33-05709



Antero Resources

**Harrison County West Virginia
Cleta / Opie / Maude Pad
Hildred Unit 2H
Original Wellpath**

Design: As Drilled

EOW Completion Report

30 June, 2014



12/05/2014

33-05709



EOW Completion Report



Company:	Antero Resources	Local Co-ordinate Reference:	Well Hildred Unit 2H
Project:	Harrison County West Virginia	TVD Reference:	Patterson 347: Hildred Unit 2H: GL 1405' + 25' Rk
Site:	Cleta / Opie / Maude Pad	MD Reference:	Patterson 347: Hildred Unit 2H: GL 1405' + 25' Rk
Well:	Hildred Unit 2H	North Reference:	Grid
Wellbore:	Original Wellpath	Survey Calculation Method:	Minimum Curvature
Design:	As Drilled	Database:	Oklahoma District

Project	Harrison County West Virginia, Harrison County, USA		
Map System:	Universal Transverse Mercator (US Survey Fee	System Datum:	Mean Sea Level
Geo Datum:	NAD 1927 (NADCON CONUS)		
Map Zone:	Zone 17N (84 W to 78 W)		

Site	Cleta / Opie / Maude Pad, SHL Cleta Unit 1H				
Site Position:		Northing:	14,243,194.63 usft	Latitude:	39° 13' 20.344 N
From:	Map	Easting:	1,766,859.11 usft	Longitude:	80° 33' 12.736 W
Position Uncertainty:	0.0 usft	Slot Radius:	13-3/16"	Grid Convergence:	0.28 °

Well	Hildred Unit 2H, Marcellus					
Well Position	+N/-S	0.0 usft	Northing:	14,243,213.27 usft	Latitude:	39° 13' 20.531 N
	+E/-W	0.0 usft	Easting:	1,766,802.11 usft	Longitude:	80° 33' 13.460 W
Position Uncertainty		2.0 usft	Wellhead Elevation:	1,430.0 usft	Ground Level:	1,405.0 usft

Wellbore	Original Wellpath
-----------------	-------------------

Magnetics	Model Name	Sample Date	Declination (°)	Dip Angle (°)	Field Strength (nT)
	IGRF2010	2/25/2014	-8.61	66.76	52,268

Design	As Drilled
---------------	------------

Audit Notes:					
Version:	1.0	Phase:	ACTUAL	Tie On Depth:	0.0
Vertical Section:	Depth From (TVD) (usft)	+N/-S (usft)	+E/-W (usft)	Direction (°)	
	0.0	0.0	0.0	308.61	

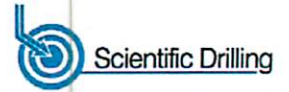
Survey Program	Date	6/30/2014			
From (usft)	To (usft)	Survey (Wellbore)	Tool Name	Description	
112.0	6,567.0	Survey #5 Def Gyro to KOP (Original Well	SDI Standard Keeper	Scientific Drilling Intl. Standard Wireline Keeper	
6,569.0	16,460.0	Survey #6 MWD (Original Wellpath)	MWD SDI	MWD - Standard ver 1.0.1	

MD (usft)	Inc (°)	Azi (azimuth) (°)	TVD (usft)	N/S (usft)	E/W (usft)	V. Sec (usft)	DLeg (°/100usft)
0.0	0.00	0.00	0.0	0.0	0.0	0.0	0.00
112.0	0.47	318.78	112.0	0.3	-0.3	0.5	0.42
212.0	0.34	346.40	212.0	0.9	-0.6	1.1	0.23
312.0	0.32	44.03	312.0	1.4	-0.5	1.3	0.32
412.0	0.26	72.40	412.0	1.7	-0.1	1.1	0.15
512.0	0.21	78.97	512.0	1.8	0.3	0.9	0.06
612.0	0.28	80.36	612.0	1.9	0.7	0.6	0.07
712.0	0.30	94.64	712.0	1.9	1.2	0.2	0.07
812.0	0.30	85.49	812.0	1.9	1.7	-0.2	0.05
912.0	0.32	106.93	912.0	1.8	2.3	-0.6	0.12
1,012.0	0.37	101.22	1,012.0	1.7	2.8	-1.2	0.06

33.05709



EOW Completion Report



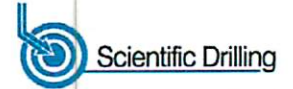
Company:	Antero Resources	Local Co-ordinate Reference:	Well Hildred Unit 2H
Project:	Harrison County West Virginia	TVD Reference:	Patterson 347: Hildred Unit 2H: GL 1405' + 25' Rk
Site:	Cleta / Opie / Maude Pad	MD Reference:	Patterson 347: Hildred Unit 2H: GL 1405' + 25' Rk
Well:	Hildred Unit 2H	North Reference:	Grid
Wellbore:	Original Wellpath	Survey Calculation Method:	Minimum Curvature
Design:	As Drilled	Database:	Oklahoma District

Survey									
MD (usft)	Inc (°)	Azi (azimuth) (°)	TVD (usft)	N/S (usft)	E/W (usft)	V. Sec (usft)	DLeg (°/100usft)		
1,112.0	0.38	104.06	1,112.0	1.6	3.5	-1.8	0.02		
1,212.0	0.28	115.14	1,212.0	1.4	4.0	-2.3	0.12		
1,312.0	0.39	100.36	1,312.0	1.2	4.6	-2.8	0.14		
1,412.0	0.34	98.96	1,412.0	1.1	5.2	-3.4	0.05		
1,512.0	0.29	96.14	1,512.0	1.0	5.8	-3.9	0.05		
1,612.0	0.18	307.08	1,612.0	1.1	5.9	-3.9	0.45		
1,712.0	5.34	257.29	1,711.8	0.2	1.2	-0.8	5.23		
1,812.0	6.24	290.39	1,811.3	1.0	-8.4	7.2	3.40		
1,912.0	7.79	314.57	1,910.6	7.7	-18.3	19.1	3.30		
2,012.0	8.07	314.37	2,009.7	17.3	-28.2	32.9	0.28		
2,112.0	7.98	323.68	2,108.7	27.8	-37.3	46.5	1.30		
2,212.0	6.02	348.66	2,208.0	38.6	-42.5	57.3	3.58		
2,312.0	6.01	356.32	2,307.4	49.0	-43.8	64.8	0.80		
2,412.0	7.05	11.92	2,406.8	60.2	-42.9	71.1	2.05		
2,512.0	7.27	13.37	2,506.0	72.3	-40.2	76.5	0.28		
2,612.0	7.22	14.22	2,605.2	84.6	-37.2	81.8	0.12		
2,712.0	5.13	14.10	2,704.6	95.0	-34.5	86.3	2.09		
2,812.0	3.61	17.04	2,804.3	102.4	-32.5	89.3	1.54		
2,912.0	2.54	21.90	2,904.2	107.4	-30.8	91.1	1.10		
3,012.0	1.67	25.91	3,004.1	110.8	-29.3	92.0	0.88		
3,112.0	1.21	22.15	3,104.1	113.1	-28.3	92.7	0.47		
3,212.0	0.98	18.14	3,204.0	114.9	-27.6	93.3	0.24		
3,312.0	0.76	25.76	3,304.0	116.3	-27.1	93.7	0.25		
3,412.0	0.42	0.61	3,404.0	117.2	-26.8	94.1	0.42		
3,512.0	0.48	45.67	3,504.0	117.9	-26.5	94.3	0.35		
3,612.0	0.34	31.69	3,604.0	118.5	-26.0	94.2	0.17		
3,712.0	0.32	50.17	3,704.0	118.9	-25.6	94.2	0.11		
3,812.0	0.36	69.49	3,804.0	119.2	-25.1	94.0	0.12		
3,912.0	0.20	80.50	3,904.0	119.3	-24.7	93.7	0.17		
4,012.0	0.25	84.30	4,004.0	119.4	-24.3	93.4	0.05		
4,112.0	0.26	83.53	4,104.0	119.4	-23.8	93.1	0.01		
4,212.0	0.27	101.43	4,204.0	119.4	-23.4	92.8	0.08		
4,312.0	0.35	95.41	4,304.0	119.3	-22.8	92.3	0.09		
4,412.0	0.41	102.38	4,404.0	119.2	-22.2	91.7	0.08		
4,512.0	0.38	107.09	4,504.0	119.0	-21.5	91.1	0.04		
4,612.0	0.40	119.29	4,604.0	118.8	-20.9	90.4	0.09		
4,712.0	0.55	99.94	4,704.0	118.5	-20.1	89.7	0.22		
4,812.0	0.43	100.42	4,804.0	118.4	-19.3	88.9	0.12		
4,912.0	0.43	104.12	4,904.0	118.2	-18.5	88.2	0.03		
5,012.0	0.41	102.84	5,004.0	118.0	-17.8	87.6	0.02		
5,112.0	0.35	89.36	5,104.0	118.0	-17.2	87.0	0.11		
5,212.0	0.15	82.24	5,204.0	118.0	-16.7	86.7	0.20		
5,312.0	0.41	66.20	5,304.0	118.1	-16.3	86.4	0.27		
5,412.0	0.42	80.29	5,404.0	118.3	-15.6	86.0	0.10		

33-05709



EOW Completion Report



Company:	Antero Resources	Local Co-ordinate Reference:	Well Hildred Unit 2H
Project:	Harrison County West Virginia	TVD Reference:	Patterson 347: Hildred Unit 2H: GL 1405' + 25' RK
Site:	Cleta / Opie / Maude Pad	MD Reference:	Patterson 347: Hildred Unit 2H: GL 1405' + 25' RK
Well:	Hildred Unit 2H	North Reference:	Grid
Wellbore:	Original Wellpath	Survey Calculation Method:	Minimum Curvature
Design:	As Drilled	Database:	Oklahoma District

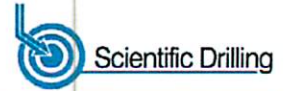
Survey

MD (usft)	Inc (°)	Azi (azimuth) (°)	TVD (usft)	N/S (usft)	E/W (usft)	V. Sec (usft)	DLeg (°/100usft)
5,512.0	0.22	36.32	5,504.0	118.6	-15.1	85.8	0.30
5,612.0	0.38	36.14	5,604.0	119.0	-14.8	85.8	0.16
5,712.0	0.23	18.16	5,704.0	119.4	-14.6	85.9	0.18
5,812.0	0.36	19.04	5,804.0	119.9	-14.4	86.1	0.13
5,912.0	0.33	7.75	5,904.0	120.5	-14.2	86.3	0.07
6,012.0	0.30	16.99	6,004.0	121.0	-14.1	86.6	0.06
6,112.0	0.32	7.03	6,104.0	121.6	-14.0	86.8	0.06
6,212.0	0.26	26.44	6,204.0	122.1	-13.9	87.0	0.11
6,312.0	0.21	43.45	6,304.0	122.4	-13.7	87.0	0.09
6,412.0	0.26	93.09	6,404.0	122.5	-13.3	86.8	0.20
6,512.0	0.23	98.38	6,504.0	122.5	-12.9	86.5	0.04
6,567.0	0.13	125.64	6,559.0	122.4	-12.7	86.3	0.23
6,569.0	0.13	125.64	6,561.0	122.4	-12.7	86.3	0.00
6,633.0	0.05	131.73	6,625.0	122.4	-12.6	86.2	0.13
6,727.0	0.17	150.36	6,719.0	122.2	-12.5	86.1	0.13
6,790.0	1.48	29.63	6,782.0	122.8	-12.1	86.1	2.50
6,821.0	4.51	29.82	6,812.9	124.2	-11.3	86.3	9.77
6,822.0	4.62	29.52	6,813.9	124.3	-11.2	86.4	10.84
Sycamore							
6,852.0	7.82	24.29	6,843.7	127.2	-9.8	87.1	10.84
6,884.0	10.48	20.16	6,875.3	131.9	-7.9	88.5	8.56
6,915.0	12.71	19.71	6,905.7	137.8	-5.8	90.5	7.20
6,947.0	15.18	21.08	6,936.7	145.0	-3.1	92.9	7.79
6,978.0	18.17	21.14	6,966.4	153.3	0.1	95.6	9.65
7,009.0	20.65	22.07	6,995.7	162.9	3.9	98.6	8.06
7,041.0	23.75	20.52	7,025.3	174.2	8.3	102.2	9.86
7,053.0	24.78	19.73	7,036.2	178.8	10.0	103.8	9.00
Middlesex							
7,072.0	26.42	18.61	7,053.4	186.5	12.7	106.5	9.00
7,103.0	29.20	15.03	7,080.8	200.4	16.8	111.9	10.46
7,135.0	32.07	9.70	7,108.3	216.3	20.3	119.1	12.34
7,166.0	34.47	4.47	7,134.2	233.2	22.4	128.0	12.06
7,197.0	36.19	358.82	7,159.5	251.1	22.9	138.8	11.91
7,229.0	37.98	352.51	7,185.1	270.3	21.4	152.0	13.13
7,230.0	38.06	352.34	7,185.9	270.9	21.3	152.4	12.99
Burkett							
7,260.0	40.56	347.62	7,209.1	289.6	18.0	166.7	12.99
7,266.0	41.06	346.91	7,213.6	293.4	17.1	169.7	11.29
Tully							
7,292.0	43.25	344.01	7,232.9	310.3	12.7	183.7	11.29
7,323.0	46.35	339.39	7,254.9	331.0	5.9	202.0	14.50
7,354.0	49.73	335.64	7,275.6	352.3	-3.0	222.2	14.13
7,386.0	53.12	332.29	7,295.6	374.8	-14.0	244.8	13.38
7,417.0	56.61	328.22	7,313.4	396.8	-26.6	268.3	15.55

33.05709



EOW Completion Report



Company:	Antero Resources	Local Co-ordinate Reference:	Well Hildred Unit 2H
Project:	Harrison County West Virginia	TVD Reference:	Patterson 347: Hildred Unit 2H: GL 1405' + 25' RK
Site:	Cleta / Opie / Maude Pad	MD Reference:	Patterson 347: Hildred Unit 2H: GL 1405' + 25' RK
Well:	Hildred Unit 2H	North Reference:	Grid
Wellbore:	Original Wellpath	Survey Calculation Method:	Minimum Curvature
Design:	As Drilled	Database:	Oklahoma District

Survey

MD (usft)	Inc (°)	Azi (azimuth) (°)	TVD (usft)	N/S (usft)	E/W (usft)	V. Sec (usft)	DLeg (°/100usft)
7,424.0	57.24	327.42	7,317.2	401.7	-29.7	273.9	13.17
Hamilton							
7,449.0	59.54	324.65	7,330.4	419.4	-41.6	294.2	13.17
7,480.0	62.31	321.20	7,345.4	441.0	-57.9	320.4	13.21
7,511.0	65.73	318.00	7,359.0	462.2	-76.0	347.8	14.41
7,543.0	69.88	315.90	7,371.1	483.8	-96.2	377.1	14.32
7,559.0	72.12	315.07	7,376.3	494.6	-106.8	392.1	14.83
Marcellus							
7,574.0	74.22	314.31	7,380.6	504.7	-117.0	406.4	14.83
7,606.0	77.72	313.31	7,388.4	526.2	-139.4	437.3	11.35
7,637.0	79.94	312.51	7,394.4	546.9	-161.7	467.6	7.60
7,669.0	80.83	312.31	7,399.7	568.2	-185.0	499.1	2.85
7,700.0	82.05	312.17	7,404.4	588.8	-207.7	529.7	3.96
7,730.0	85.51	310.79	7,407.6	608.5	-230.0	559.5	12.41
7,761.0	88.49	310.79	7,409.2	628.8	-253.5	590.4	9.61
7,793.0	89.09	309.47	7,409.9	649.4	-277.9	622.4	4.53
7,887.0	89.73	307.41	7,410.9	707.8	-351.5	716.4	2.29
7,981.0	87.98	307.95	7,412.8	765.2	-425.9	810.3	1.95
8,075.0	88.11	307.43	7,416.0	822.7	-500.3	904.3	0.57
8,169.0	88.96	308.14	7,418.4	880.3	-574.5	998.2	1.18
8,263.0	89.73	308.50	7,419.4	938.5	-648.3	1,092.2	0.90
8,357.0	89.93	308.34	7,419.7	997.0	-721.9	1,186.2	0.27
8,451.0	87.38	306.68	7,421.9	1,054.2	-796.4	1,280.2	3.24
8,546.0	90.30	307.74	7,423.8	1,111.6	-872.1	1,375.1	3.27
8,640.0	89.43	305.92	7,424.1	1,167.9	-947.3	1,469.1	2.15
8,734.0	88.69	307.23	7,425.6	1,223.9	-1,022.8	1,563.0	1.60
8,828.0	87.85	308.02	7,428.4	1,281.3	-1,097.2	1,656.9	1.23
8,922.0	89.16	308.59	7,430.9	1,339.5	-1,170.9	1,750.9	1.52
9,017.0	89.50	309.92	7,432.0	1,399.7	-1,244.5	1,845.9	1.44
9,111.0	88.72	308.14	7,433.5	1,458.8	-1,317.5	1,939.9	2.07
9,205.0	89.20	311.74	7,435.2	1,519.2	-1,389.6	2,033.8	3.86
9,299.0	88.52	310.37	7,437.0	1,580.9	-1,460.4	2,127.7	1.63
9,393.0	89.16	311.56	7,439.0	1,642.5	-1,531.4	2,221.6	1.44
9,487.0	88.05	310.32	7,441.2	1,704.1	-1,602.4	2,315.5	1.77
9,578.0	88.49	307.80	7,444.0	1,761.4	-1,673.0	2,406.4	2.81
9,668.0	89.50	307.79	7,445.6	1,816.5	-1,744.1	2,496.4	1.12
9,760.0	90.27	307.49	7,445.8	1,872.7	-1,817.0	2,588.4	0.90
9,852.0	89.77	306.76	7,445.7	1,928.2	-1,890.3	2,680.4	0.96
9,945.0	89.80	306.95	7,446.1	1,984.0	-1,964.7	2,773.3	0.21
10,037.0	88.12	307.37	7,447.7	2,039.6	-2,038.0	2,865.3	1.88
10,130.0	89.30	308.56	7,449.8	2,096.8	-2,111.3	2,958.2	1.80
10,222.0	87.92	309.21	7,452.1	2,154.5	-2,182.9	3,050.2	1.66
10,315.0	88.09	307.65	7,455.3	2,212.3	-2,255.7	3,143.1	1.69
10,407.0	88.09	307.35	7,458.4	2,268.3	-2,328.7	3,235.1	0.33
10,499.0	89.33	309.81	7,460.4	2,325.6	-2,400.6	3,327.0	2.99

33-05709



EOW Completion Report



Company:	Antero Resources	Local Co-ordinate Reference:	Well Hildred Unit 2H
Project:	Harrison County West Virginia	TVD Reference:	Patterson 347: Hildred Unit 2H: GL 1405' + 25' RK
Site:	Cleta / Opie / Maude Pad	MD Reference:	Patterson 347: Hildred Unit 2H: GL 1405' + 25' RK
Well:	Hildred Unit 2H	North Reference:	Grid
Wellbore:	Original Wellpath	Survey Calculation Method:	Minimum Curvature
Design:	As Drilled	Database:	Oklahoma District

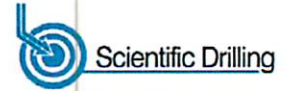
Survey

MD (usft)	Inc (°)	Azi (azimuth) (°)	TVD (usft)	N/S (usft)	E/W (usft)	V. Sec (usft)	DLeg (°/100usft)
10,590.0	89.43	310.03	7,461.4	2,384.0	-2,470.4	3,418.0	0.27
10,684.0	87.82	308.01	7,463.7	2,443.2	-2,543.4	3,512.0	2.75
10,778.0	88.12	308.24	7,467.0	2,501.2	-2,617.3	3,605.9	0.40
10,872.0	87.79	307.92	7,470.4	2,559.1	-2,691.2	3,699.9	0.49
10,966.0	88.56	307.87	7,473.4	2,616.8	-2,765.3	3,793.8	0.82
11,061.0	89.83	312.50	7,474.7	2,678.1	-2,837.9	3,888.7	5.05
11,155.0	88.49	312.07	7,476.1	2,741.3	-2,907.4	3,982.5	1.50
11,249.0	87.23	308.75	7,479.6	2,802.2	-2,978.9	4,076.4	3.78
11,344.0	89.26	312.11	7,482.5	2,863.8	-3,051.2	4,171.3	4.13
11,438.0	89.60	311.14	7,483.4	2,926.2	-3,121.5	4,265.1	1.09
11,532.0	89.46	306.15	7,484.2	2,984.9	-3,194.8	4,359.1	5.31
11,626.0	89.23	305.50	7,485.3	3,039.9	-3,271.1	4,453.0	0.73
11,720.0	90.17	307.01	7,485.8	3,095.5	-3,346.9	4,546.9	1.89
11,814.0	90.84	307.08	7,484.9	3,152.1	-3,421.9	4,640.9	0.72
11,908.0	90.07	306.55	7,484.2	3,208.4	-3,497.1	4,734.8	0.99
12,002.0	90.71	307.45	7,483.5	3,265.0	-3,572.2	4,828.8	1.17
12,097.0	90.70	308.08	7,482.4	3,323.2	-3,647.3	4,923.8	0.66
12,191.0	89.40	308.31	7,482.3	3,381.3	-3,721.2	5,017.8	1.40
12,285.0	89.60	307.78	7,483.1	3,439.2	-3,795.2	5,111.7	0.60
12,379.0	89.83	307.32	7,483.6	3,496.5	-3,869.7	5,205.7	0.55
12,473.0	88.59	307.83	7,484.9	3,553.8	-3,944.2	5,299.7	1.43
12,568.0	88.99	307.28	7,486.9	3,611.7	-4,019.5	5,394.7	0.72
12,662.0	87.79	308.10	7,489.5	3,669.2	-4,093.9	5,488.6	1.55
12,756.0	89.09	309.02	7,492.1	3,727.8	-4,167.3	5,582.6	1.69
12,850.0	89.13	308.65	7,493.5	3,786.7	-4,240.5	5,676.6	0.40
12,945.0	89.63	310.53	7,494.6	3,847.2	-4,313.7	5,771.5	2.05
13,039.0	89.16	310.25	7,495.6	3,908.1	-4,385.3	5,865.5	0.58
13,133.0	89.56	310.32	7,496.6	3,968.9	-4,457.0	5,959.4	0.43
13,227.0	88.79	308.75	7,498.0	4,028.7	-4,529.5	6,053.4	1.86
13,321.0	88.62	308.19	7,500.1	4,087.2	-4,603.1	6,147.4	0.62
13,415.0	89.16	307.96	7,501.9	4,145.2	-4,677.1	6,241.4	0.62
13,510.0	88.25	308.09	7,504.1	4,203.7	-4,751.9	6,336.3	0.97
13,604.0	88.59	308.11	7,506.7	4,261.6	-4,825.8	6,430.3	0.36
13,698.0	87.35	309.41	7,510.0	4,320.4	-4,899.1	6,524.2	1.91
13,792.0	87.55	309.51	7,514.2	4,380.1	-4,971.6	6,618.1	0.24
13,887.0	87.82	309.33	7,518.0	4,440.4	-5,044.9	6,713.0	0.34
13,981.0	88.02	308.86	7,521.4	4,499.6	-5,117.8	6,807.0	0.54
14,075.0	87.82	308.49	7,524.8	4,558.3	-5,191.2	6,900.9	0.45
14,169.0	87.72	307.19	7,528.5	4,616.0	-5,265.3	6,994.8	1.39
14,263.0	88.93	307.35	7,531.2	4,672.9	-5,340.1	7,088.8	1.30
14,357.0	89.20	307.45	7,532.8	4,729.9	-5,414.8	7,182.7	0.31
14,451.0	90.40	307.96	7,533.1	4,787.4	-5,489.2	7,276.7	1.39
14,545.0	90.44	307.11	7,532.4	4,844.7	-5,563.7	7,370.7	0.91
14,640.0	90.44	308.44	7,531.7	4,902.9	-5,638.8	7,465.7	1.40

33-05709



EOW Completion Report



Company:	Antero Resources	Local Co-ordinate Reference:	Well Hildred Unit 2H
Project:	Harrison County West Virginia	TVD Reference:	Patterson 347: Hildred Unit 2H: GL 1405' + 25' RK
Site:	Cleta / Opie / Maude Pad	MD Reference:	Patterson 347: Hildred Unit 2H: GL 1405' + 25' RK
Well:	Hildred Unit 2H	North Reference:	Grid
Wellbore:	Original Wellpath	Survey Calculation Method:	Minimum Curvature
Design:	As Drilled	Database:	Oklahoma District

Survey

MD (usft)	Inc (°)	Azi (azimuth) (°)	TVD (usft)	N/S (usft)	E/W (usft)	V. Sec (usft)	DLeg (°/100usft)
14,734.0	90.90	311.56	7,530.6	4,963.3	-5,710.8	7,559.6	3.35
14,828.0	89.90	311.54	7,529.9	5,025.6	-5,781.1	7,653.5	1.06
14,922.0	88.99	308.91	7,530.8	5,086.3	-5,852.9	7,747.5	2.96
15,014.0	94.12	307.62	7,528.3	5,143.3	-5,925.1	7,839.4	5.75
15,110.0	94.62	308.75	7,521.0	5,202.5	-6,000.3	7,935.1	1.28
15,204.0	92.45	308.15	7,515.2	5,260.8	-6,073.8	8,028.9	2.39
15,299.0	93.45	309.30	7,510.3	5,320.1	-6,147.8	8,123.8	1.60
15,393.0	91.75	307.52	7,506.1	5,378.5	-6,221.4	8,217.7	2.62
15,487.0	92.78	308.33	7,502.4	5,436.2	-6,295.4	8,311.6	1.39
15,581.0	91.95	308.98	7,498.5	5,494.9	-6,368.8	8,405.5	1.12
15,675.0	92.42	309.41	7,494.9	5,554.2	-6,441.6	8,499.5	0.68
15,769.0	92.99	308.55	7,490.5	5,613.3	-6,514.6	8,593.3	1.10
15,863.0	90.57	307.08	7,487.5	5,670.9	-6,588.8	8,687.3	3.01
15,957.0	90.84	308.31	7,486.4	5,728.4	-6,663.2	8,781.3	1.34
16,051.0	90.48	308.31	7,485.3	5,786.6	-6,736.9	8,875.3	0.38
16,146.0	89.96	307.60	7,484.9	5,845.1	-6,811.8	8,970.2	0.93
16,240.0	93.19	309.25	7,482.4	5,903.4	-6,885.4	9,064.2	3.86
16,333.0	93.52	309.38	7,476.9	5,962.3	-6,957.3	9,157.0	0.38
16,399.0	93.66	308.98	7,472.8	6,003.9	-7,008.3	9,222.9	0.64
16,460.0	93.66	308.98	7,468.9	6,042.2	-7,055.6	9,283.8	0.00

Design Annotations

Measured Depth (usft)	Vertical Depth (usft)	Local Coordinates		Comment
		+N/-S (usft)	+E/-W (usft)	
6,822.0	6,813.9	124.3	-11.2	Sycamore
7,053.0	7,036.2	178.8	10.0	Middlesex
7,230.0	7,185.9	270.9	21.3	Burkett
7,266.0	7,213.6	293.4	17.1	Tully
7,424.0	7,317.2	401.7	-29.7	Hamilton
7,559.0	7,376.3	494.6	-106.8	Marcellus

Checked By: _____ Approved By: _____ Date: _____