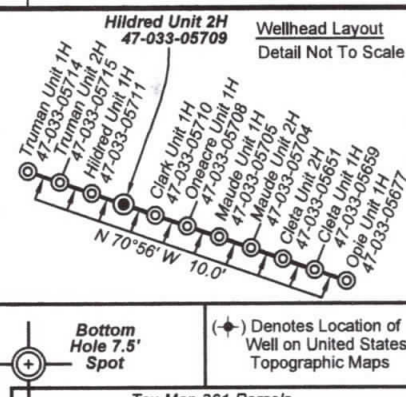


Antero Resources
Well No. Hildred Unit 2H
As-Drilled Plat
Antero Resources Corporation

Tax Map 8 Parcels			
Par	Owner	DB/Pg	Acres
1	13 Lucille Devericks Billy J. Devericks	WB42/159	23.0
2	3 Clarence & Mary Mutschelknaus	267/726	22.86
3	10.5 Butterfly Evolution Trust	250/468	0.41
4	10 Butterfly Evolution Trust	250/468	18.05
5	10.4 Butterfly Evolution Trust	250/468	0.76
6	10.1 Barbara Ann Templeton	206/575	12.67
7	9 Jonell L. Carver	265/418	21.7
8	10.6 Butterfly Evolution Trust	250/468	10.66
9	10.3 Butterfly Evolution Trust	250/468	27.8
10	4 Butterfly Evolution Trust	263/40	135.89



10,491' to Bottom Hole

3,536' to Top Hole

LATITUDE 39 - 15 - 00

LONGITUDE 80 - 32 - 30

LONGITUDE 10,021' to Top Hole

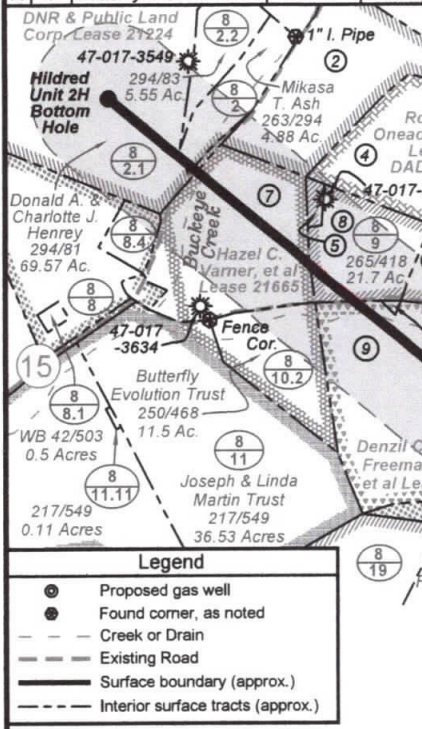
3,864' to Bottom Hole

Notes:
West Virginia Coordinate System of 1927, North Zone based upon Differential GPS Measurements.
 Well No. Hildred Unit 2H Top Hole coordinates are
 N: 264,853.94 Latitude: 39°13'20.54"
 E: 1,701,470.12 Longitude: 80°33'13.45"
 Bottom Hole coordinates are
 N: 271,011.69 Latitude: 39°14'20.58"
 E: 1,694,515.09 Longitude: 80°34'42.76"
UTM Zone 17, NAD 1983
 Top Hole Coordinates: N: 4,341,558.879m E: 538,537.187m
 Bottom Hole Coordinates: N: 4,343,399.498m E: 536,387.023m

Plat orientation and corner and well references are based upon the grid north meridian.
 Well location references are based upon the magnetic meridian.

Tax Map 361 Parcels			
Par	Owner	DB/Pg	Acres
11	4 Lucille Devericks	WB167/23	9.84
12	3 Lucille Devericks	WB167/23	9.70

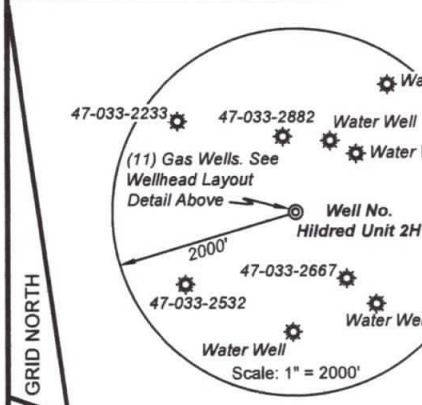
Lease DV021531



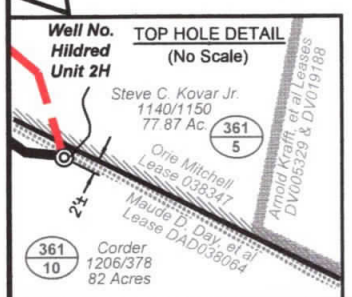
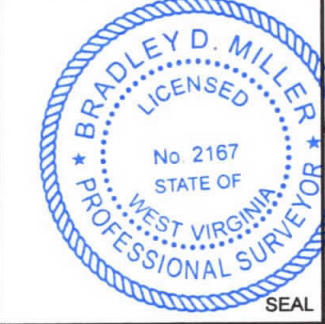
I, the undersigned, hereby certify that this plat is correct to the best of my knowledge and belief and shows all the information required by law and the rules issued and prescribed by the Department of Environmental Protection.

Bradley D. Miller
Bradley D. Miller, P.S. 2167

Top Hole coordinates verified by survey grade GPS. As-drilled data and information was provided by Antero Resources Corporation. Allegheny Surveys, Inc. (ASI) is not certifying the data and information provided. ASI is not responsible for any errors or inaccuracies with the data and information that has been provided.



Line	Bearing	Distance
L1	S 07°55' E	823.9'
L2	N 38°22' W	935.0'
L3	N 22°22' E	1297.5'
L4	N 37°39' E	1883.8'



FILE NO: 232-30-G-12
 DRAWING NO: As-Drilled Hildred 2H
 SCALE: 1" = 1200'
 MINIMUM DEGREE OF ACCURACY: Submeter
 PROVEN SOURCE OF ELEVATION: WVDOT, Bridgeport, WV

STATE OF WEST VIRGINIA
 DEPARTMENT OF ENVIRONMENTAL PROTECTION
 OFFICE OF OIL AND GAS

DATE: June 3 20 20
 OPERATOR'S WELL NO. Hildred Unit 2H
 API WELL NO:
 47 - 033 - 05709
 STATE COUNTY PERMIT

WELL TYPE: OIL GAS LIQUID INJECTION WASTE DISPOSAL
 (IF GAS) PRODUCTION: STORAGE DEEP SHALLOW

LOCATION: ELEVATION: As-Built Grade - 1405' WATERSHED: Tenmile Creek QUADRANGLE: Big Isaac
 DISTRICT: Union COUNTY: Harrison
 SURFACE OWNER: Gerald & Louella Corder Howard D. Nicholson, et al (2) 21224
 Hazel Varner, DNR & Public Land Corp.; DAD65332/011-12 ACREAGE: 82 31.5; 127
 Hazel C. Varner, et al; John P. Golden, et ux; 20-361-1.1; DAD65332/001 ACREAGE: 54; 23; 27.95
 ROYALTY OWNER: Maude D. Day, et al; Orie L. & Lorene Mitchell; Denzil C. Freeman, et al LEASE NO: DAD038064; 038347 ACREAGE: 147; 48.69; 59; 165

PROPOSED WORK: DRILL CONVERT DRILL DEEPER FRACTURE OR STIMULATE PLUG OFF OLD FORMATION
 PERFORATE NEW FORMATION OTHER PHYSICAL CHANGE IN WELL (SPECIFY) As-Drilled TVD 7,469'
 PLUG AND ABANDON CLEAN OUT AND REPLUG TARGET FORMATION: Marcellus Shale DEPTH: MD 16,460'

WELL OPERATOR: Antero Resources Corporation DESIGNATED AGENT: Dianna Stamper - CT Corporation System
 ADDRESS: 1615 Wynkoop Street ADDRESS: 5400 D Big Tyler Road
 Denver, CO 80202 Charleston, WV 25313