



Antero Resources
 Gideon Unit 2H
 Harrison County West Virginia
 Northing: 14254968.09
 Easting: 1768599.99
 As Drilled ST1



Genie Lightfoot
 Scientific Drilling
 421 South Eagle Lane
 Oklahoma City Oklahoma
 405-787-3663

REFERENCE INFORMATION

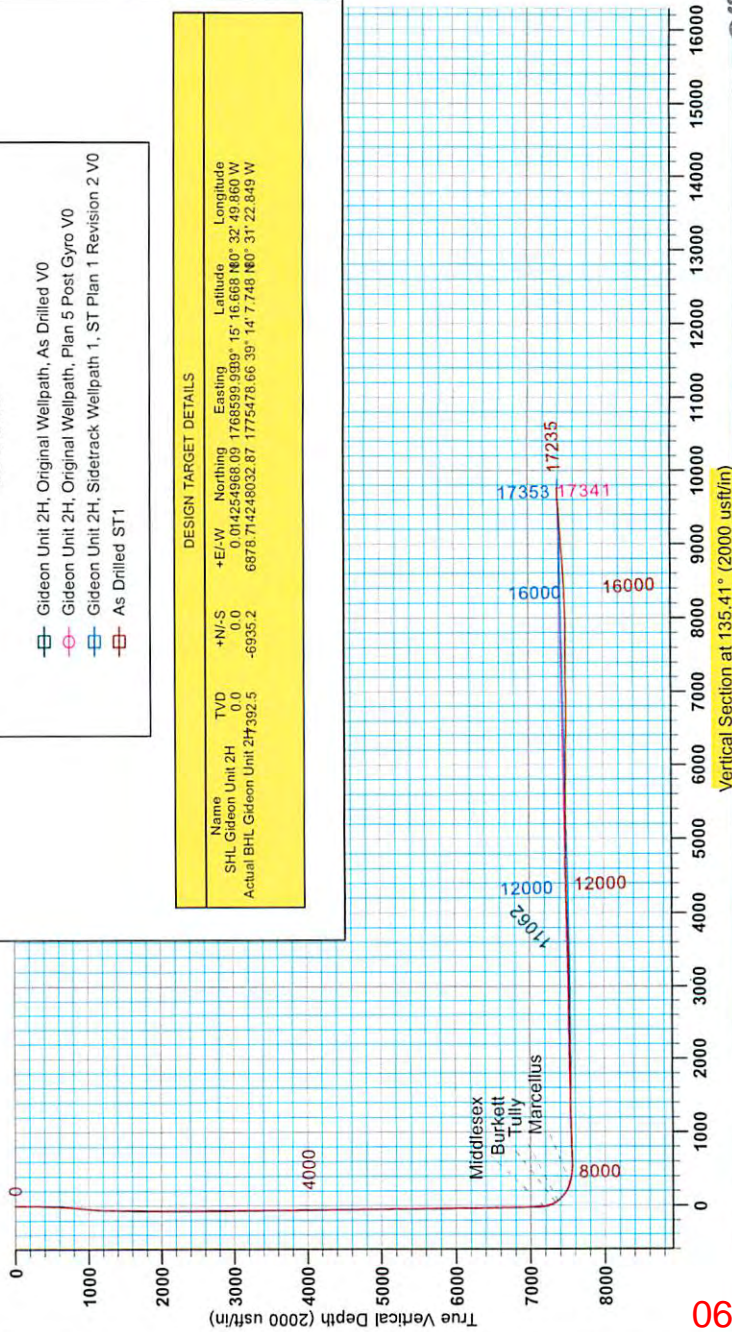
Geomatics NTS Technology, Inc. 11/11/14, 05/14/15
 Vertical (TVD) Reference: Gideon Unit 2H (SL 1432.2 27' N3) @ 1476.04ft
 Master: G104 (DIP) 01/04/14, 01/04/14, 01/04/14, 01/04/14
 Calculation Method: Minimum Curvature

LEGEND

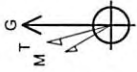
- Gideon Unit 2H, Original Wellpath, As Drilled V0
- Gideon Unit 2H, Original Wellpath, Plan 5 Post Gyro V0
- Gideon Unit 2H, Sidetrack Wellpath 1, ST Plan 1 Revision 2 V0
- As Drilled ST1

DESIGN TARGET DETAILS

Name	TVD	+N/-S	+E/-W	Northing	Easting	Latitude	Longitude
SHL Gideon Unit 2H	0.0	0.0	0.0	14254968.09	1768599.9999	15° 16' 688.160"	32° 49' 860.000"
Actual BHL Gideon Unit 2H	392.5	-6935.2	6878.7	14248032.87	1775478.66	39° 14' 7.748"	160° 31' 22.849"

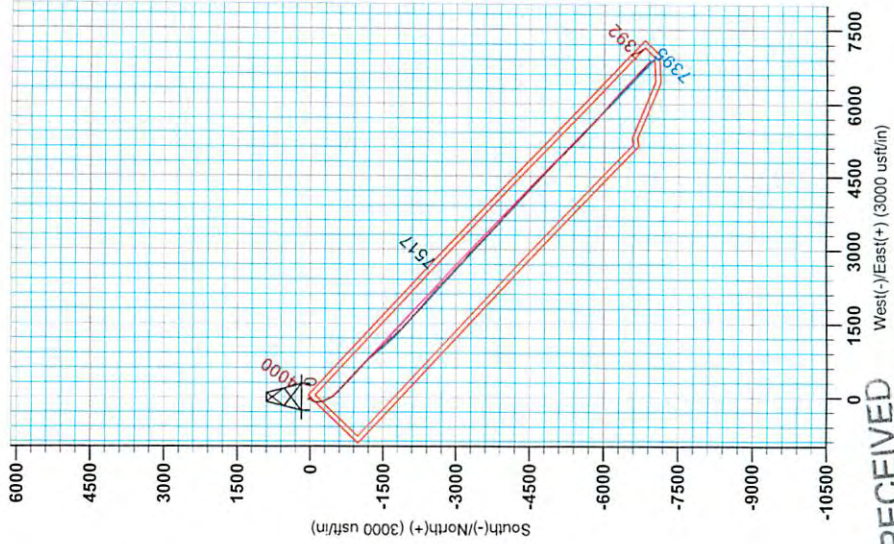


Vertical Section at 135.41° (2000 usft/m)



To convert Magnetic North to Grid, Subtract 8.69°
 To convert True North to Grid, Subtract 0.29°

Azimuths to Grid North
 True North: -0.29°
 Magnetic North: -8.69°
 Magnetic Field
 Date: 10/13/2013
 Model: IGRF2010



RECEIVED
 Office of Oil and Gas

MAY 26 2015

WV Department of
 Environmental Protection

06/05/2015



Antero Resources

Harrison County West Virginia
Gideon/Varner/Plaughter/Lowndes Pad
Gideon Unit 2H
Sidetrack Wellpath 1

Design: As Drilled ST1

EOW Completion Report

29 October, 2013

RECEIVED
Office of Oil and Gas
MAY 26 2015
WV Department of
Environmental Protection



06/05/2015

Company:	Antero Resources	Local Co-ordinate Reference:	Well Gideon Unit 2H
Project:	Harrison County West Virginia	TVD Reference:	Gideon Unit 2H GL 1453' + 23' KB @ 1476.0usft
Site:	Gideon/Varner/Plaughner/Lowndes Pad	MD Reference:	Gideon Unit 2H GL 1453' + 23' KB @ 1476.0usft
Well:	Gideon Unit 2H	North Reference:	Grid
Wellbore:	Sidetrack Wellpath 1	Survey Calculation Method:	Minimum Curvature
Design:	As Drilled ST1	Database:	Oklahoma District

Project	Harrison County West Virginia, Harrison County, USA		
Map System:	Universal Transverse Mercator (US Survey Feet)	System Datum:	Mean Sea Level
Geo Datum:	NAD 1927 (NADCON CONUS)		
Map Zone:	Zone 17N (84 W to 78 W)		

Site	Gideon/Varner/Plaughner/Lowndes Pad				
Site Position:		Northing:	14,254,963.59 usft	Latitude:	39° 15' 16.624 N
From:	Map	Easting:	1,768,591.64 usft	Longitude:	80° 32' 49.966 W
Position Uncertainty:	0.0 usft	Slot Radius:	13-3/16"	Grid Convergence:	0.29 °

Well	Gideon Unit 2H, Marcellus					
Well Position	+N/-S	0.0 usft	Northing:	14,254,968.09 usft	Latitude:	39° 15' 16.668 N
	+E/-W	0.0 usft	Easting:	1,768,599.99 usft	Longitude:	80° 32' 49.860 W
Position Uncertainty	2.0 usft		Wellhead Elevation:	1,476.0 usft	Ground Level:	1,453.0 usft

Wellbore	Sidetrack Wellpath 1				
-----------------	----------------------	--	--	--	--

Magnetics	Model Name	Sample Date	Declination (°)	Dip Angle (°)	Field Strength (nT)
	IGRF2010	10/13/2013	-8.60	66.82	52,329

Design	As Drilled ST1				
---------------	----------------	--	--	--	--

Audit Notes:					
Version:	1.0	Phase:	ACTUAL	Tie On Depth:	8,750.0

Vertical Section:	Depth From (TVD) (usft)	+N/-S (usft)	+E/-W (usft)	Direction (°)
	0.0	0.0	0.0	135.1

Survey Program	Date	From (usft)	To (usft)	Survey (Wellbore)	Tool Name	Description
	10/29/2013	100.0	6,905.1	Survey #3 Final Gyro (Original Wellpath)	SDI Standard Keeper	Scientific Drilling Intl. Standard Wireline Keeper
		6,930.0	8,750.0	Survey #4 MWD (Original Wellpath)	SDI MWD	Scientific Drilling Intl. MWD - Standard ver 1.0.1
		8,811.0	17,235.0	Survey #1 MWD (Sidetrack Wellpath 1)	SDI MWD	Scientific Drilling Intl. MWD - Standard ver 1.0.1

Survey	MD (usft)	Inc (°)	Azi (azimuth) (°)	TVD (usft)	N/S (usft)	E/W (usft)	V. Sec (usft)	DLeg (°/100usft)
	0.0	0.00	0.00	0.0	0.0	0.0	0.0	0.00
	100.0	1.21	255.82	100.0	-0.3	-1.0	-0.5	1.21
	200.0	1.50	282.31	200.0	-0.2	-3.3	-2.2	0.68
	300.0	0.90	283.98	299.9	0.2	-5.4	-3.9	0.60
	400.0	0.91	271.53	399.9	0.4	-6.9	-5.2	0.20
	500.0	2.16	303.62	499.9	1.5	-9.3	-7.6	1.47
	600.0	2.21	307.73	599.8	3.7	-12.4	-11.3	0.16
	700.0	2.66	312.43	699.7	6.5	-15.6	-15.6	0.49
	800.0	4.89	313.16	799.5	11.0	-20.4	-22.2	2.23
	900.0	6.85	313.22	899.0	18.0	-27.9	-32.4	1.96

RECEIVED
 Office of Oil and Gas
 MAY 26 2015
 WV Department of Environmental Protection



Company:	Antero Resources	Local Co-ordinate Reference:	Well Gideon Unit 2H
Project:	Harrison County West Virginia	TVD Reference:	Gideon Unit 2H GL 1453' + 23' KB @ 1476.0usft
Site:	Gideon/Varner/Plaugher/Lowndes Pad	MD Reference:	Gideon Unit 2H GL 1453' + 23' KB @ 1476.0usft
Well:	Gideon Unit 2H	North Reference:	Grid
Wellbore:	Sidetrack Wellpath 1	Survey Calculation Method:	Minimum Curvature
Design:	As Drilled ST1	Database:	Oklahoma District

Survey									
MD (usft)	Inc (°)	Azi (azimuth) (°)	TVD (usft)	N/S (usft)	E/W (usft)	V. Sec (usft)	DLeg (°/100usft)		
1,000.0	7.11	314.01	998.2	26.3	-36.7	-44.5	0.28		
1,100.0	4.87	314.47	1,097.7	33.6	-44.2	-55.0	2.24		
1,200.0	1.95	327.39	1,197.5	38.0	-48.1	-60.9	3.00		
1,300.0	1.49	330.31	1,297.5	40.6	-49.7	-63.8	0.47		
1,400.0	1.09	329.06	1,397.4	42.5	-50.8	-66.0	0.40		
1,500.0	1.01	335.61	1,497.4	44.1	-51.7	-67.7	0.14		
1,600.0	0.70	338.31	1,597.4	45.5	-52.3	-69.1	0.31		
1,700.0	0.43	335.93	1,697.4	46.4	-52.6	-70.0	0.27		
1,800.0	0.32	306.32	1,797.4	46.9	-53.0	-70.6	0.22		
1,900.0	0.30	323.85	1,897.4	47.3	-53.4	-71.2	0.10		
2,000.0	0.10	305.43	1,997.4	47.6	-53.6	-71.5	0.21		
2,100.0	0.10	136.11	2,097.4	47.6	-53.6	-71.5	0.20		
2,200.0	0.08	278.46	2,197.4	47.5	-53.6	-71.5	0.17		
2,300.0	0.18	88.44	2,297.4	47.5	-53.6	-71.4	0.26		
2,400.0	0.07	222.94	2,397.4	47.5	-53.4	-71.3	0.23		
2,500.0	0.18	275.19	2,497.4	47.5	-53.6	-71.4	0.15		
2,515.6	0.08	281.04	2,513.0	47.5	-53.7	-71.5	0.64		
2,600.0	0.10	212.68	2,597.4	47.4	-53.8	-71.5	0.12		
2,700.0	0.42	111.88	2,697.4	47.2	-53.5	-71.2	0.45		
2,800.0	0.40	129.65	2,797.4	46.8	-52.9	-70.5	0.13		
2,900.0	0.52	124.59	2,897.4	46.4	-52.2	-69.7	0.13		
3,000.0	0.31	122.05	2,997.4	46.0	-51.6	-69.0	0.21		
3,100.0	0.52	128.07	3,097.4	45.5	-51.0	-68.3	0.21		
3,200.0	0.31	120.97	3,197.4	45.1	-50.4	-67.5	0.22		
3,300.0	0.61	98.53	3,297.4	44.9	-49.7	-66.9	0.34		
3,400.0	0.67	110.49	3,397.4	44.6	-48.6	-65.9	0.15		
3,500.0	0.69	123.02	3,497.4	44.1	-47.6	-64.8	0.15		
3,600.0	0.62	130.59	3,597.4	43.4	-46.6	-63.7	0.11		
3,700.0	0.63	129.36	3,697.3	42.7	-45.8	-62.6	0.02		
3,800.0	0.71	128.21	3,797.3	42.0	-44.9	-61.4	0.08		
3,900.0	0.48	128.23	3,897.3	41.3	-44.1	-60.4	0.23		
4,000.0	0.62	124.65	3,997.3	40.8	-43.3	-59.4	0.14		
4,100.0	0.47	127.05	4,097.3	40.2	-42.5	-58.5	0.15		
4,200.0	0.38	128.57	4,197.3	39.7	-41.9	-57.8	0.09		
4,300.0	0.47	141.88	4,297.3	39.2	-41.4	-57.0	0.13		
4,400.0	0.49	142.24	4,397.3	38.6	-40.9	-56.2	0.02		
4,500.0	0.64	154.76	4,497.3	37.7	-40.4	-55.2	0.19		
4,600.0	0.52	142.78	4,597.3	36.9	-39.9	-54.3	0.17		
4,700.0	0.38	142.95	4,697.3	36.2	-39.4	-53.5	0.14		
4,800.0	0.50	161.16	4,797.3	35.5	-39.1	-52.8	0.18		
4,900.0	0.67	161.26	4,897.3	34.6	-38.8	-51.8	0.17		
5,000.0	0.76	180.58	4,997.3	33.4	-38.6	-50.8	0.26		
5,100.0	0.72	158.33	5,097.3	32.1	-38.4	-49.8	0.29		
5,200.0	0.76	141.26	5,197.3	31.0	-37.7	-48.6	0.22		
5,300.0	0.78	135.49	5,297.3	30.0	-36.8	-47.2	0.08		

RECEIVED
 Office of Oil and Gas
 MAY 26 2015
 Environmental Protection
 www.deq.state.wv.gov



EOW Completion Report

Office of Scientific Drilling
 RECEIVED
 MAY 26 2015
 Oklahoma Department of Environmental Protection

Company:	Antero Resources	Local Co-ordinate Reference:	Well Gideon Unit 2H
Project:	Harrison County West Virginia	TVD Reference:	Gideon Unit 2H GL 1453' + 23' KB @ 1476.0usft
Site:	Gideon/Varner/Plaugher/Lowndes Pad	MD Reference:	Gideon Unit 2H GL 1453' + 23' KB @ 1476.0usft
Well:	Gideon Unit 2H	North Reference:	Grid
Wellbore:	Sidetrack Wellpath 1	Survey Calculation Method:	Minimum Curvature
Design:	As Drilled ST1	Database:	Oklahoma District

Survey

MD (usft)	Inc (°)	Azi (azimuth) (°)	TVD (usft)	N/S (usft)	E/W (usft)	V. Sec (usft)	DLeg (°/100usft)
5,400.0	0.58	136.46	5,397.3	29.2	-36.0	-46.0	0.20
5,500.0	0.88	144.12	5,497.2	28.2	-35.2	-44.8	0.31
5,600.0	0.51	118.92	5,597.2	27.3	-34.4	-43.6	0.47
5,700.0	0.71	140.73	5,697.2	26.6	-33.6	-42.5	0.30
5,800.0	0.97	141.43	5,797.2	25.5	-32.7	-41.1	0.26
5,900.0	0.59	138.31	5,897.2	24.5	-31.8	-39.7	0.38
6,000.0	0.74	141.74	5,997.2	23.6	-31.0	-38.6	0.16
6,100.0	0.79	138.15	6,097.2	22.5	-30.2	-37.2	0.07
6,200.0	0.74	126.91	6,197.2	21.6	-29.2	-35.9	0.16
6,300.0	0.70	134.16	6,297.2	20.8	-28.2	-34.7	0.10
6,400.0	0.68	113.37	6,397.2	20.2	-27.3	-33.5	0.25
6,500.0	0.82	134.23	6,497.2	19.4	-26.2	-32.2	0.30
6,600.0	0.93	127.43	6,597.2	18.4	-25.0	-30.7	0.15
6,700.0	0.99	138.79	6,697.1	17.3	-23.8	-29.0	0.20
6,800.0	1.13	139.15	6,797.1	15.9	-22.6	-27.2	0.14
6,900.0	1.09	140.50	6,897.1	14.4	-21.4	-25.3	0.05
6,905.1	1.05	143.41	6,902.2	14.3	-21.3	-25.2	1.33
6,930.0	1.23	185.08	6,927.1	13.9	-21.2	-24.8	3.32
6,962.0	4.31	220.06	6,959.1	12.6	-22.0	-24.4	10.55
6,993.0	8.79	220.77	6,989.8	9.9	-24.3	-24.1	14.45
7,025.0	13.01	224.19	7,021.3	5.5	-28.4	-23.9	13.34
7,057.0	16.80	223.40	7,052.2	-0.4	-34.1	-23.6	11.86
7,088.0	20.66	223.23	7,081.5	-7.7	-40.9	-23.3	12.45
7,119.0	24.45	222.35	7,110.2	-16.4	-49.0	-22.7	12.27
7,151.0	27.87	221.91	7,138.9	-26.9	-58.5	-21.9	10.70
7,183.0	31.22	217.87	7,166.7	-39.0	-68.6	-20.4	12.17
7,215.0	32.80	211.36	7,193.9	-52.9	-78.2	-17.2	11.85
7,246.0	33.85	205.82	7,219.8	-67.9	-86.3	-12.2	10.38
7,278.0	34.47	197.12	7,246.3	-84.6	-92.8	-4.9	15.38
7,310.0	35.70	190.18	7,272.5	-102.4	-97.2	4.7	13.04
7,341.0	38.34	185.70	7,297.2	-120.9	-99.7	16.1	12.17
7,373.0	41.33	182.27	7,321.8	-141.3	-101.1	29.7	11.59
7,405.0	43.79	176.56	7,345.4	-163.0	-100.9	45.2	14.30
7,436.0	46.87	173.22	7,367.2	-184.9	-98.9	62.3	12.54
7,468.0	49.24	170.40	7,388.5	-208.5	-95.5	81.4	9.89
7,499.0	50.91	166.36	7,408.4	-231.7	-90.7	101.4	11.35
7,531.0	53.64	163.90	7,428.0	-256.2	-84.2	123.3	10.48
7,562.0	56.19	161.44	7,445.8	-280.4	-76.6	145.9	10.48
7,594.0	59.09	160.03	7,463.0	-305.9	-67.7	170.3	9.80
7,626.0	61.11	156.96	7,478.9	-331.7	-57.5	195.8	10.44
7,657.0	64.63	154.58	7,493.1	-356.9	-46.2	221.7	13.25
7,689.0	67.53	152.39	7,506.0	-383.0	-33.1	249.5	11.01
7,721.0	70.43	149.05	7,517.5	-409.1	-18.5	278.3	13.30
7,752.0	73.16	146.50	7,527.2	-434.0	-2.8	307.1	11.77



EOW Completion Report

RECEIVED
 Office of Oil and Gas
 May 26 2015
 Oklahoma Department of Environmental Protection
 Scientific Drilling

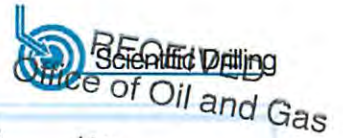
Company: Antero Resources	Local Co-ordinate Reference: Well Gideon Unit 2H
Project: Harrison County West Virginia	TVD Reference: Gideon Unit 2H GL 1453' + 23' KB @ 1476.0usft
Site: Gideon/Varner/Plaughter/Lowndes Pad	MD Reference: Gideon Unit 2H GL 1453' + 23' KB @ 1476.0usft
Well: Gideon Unit 2H	North Reference: Grid Minimum Surface
Wellbore: Sidetrack Wellpath 1	Survey Calculation Method: Oklahoma District
Design: As Drilled ST1	Database:

Survey

MD (usft)	Inc (°)	Azi (azimuth) (°)	TVD (usft)	N/S (usft)	E/W (usft)	V. Sec (usft)	DLeg (°/100usft)
7,784.0	75.18	144.56	7,535.9	-459.4	14.6	337.4	8.59
7,815.0	77.12	141.58	7,543.3	-483.4	32.7	367.2	11.24
7,846.0	78.35	139.56	7,549.9	-506.8	51.9	397.4	7.50
7,877.0	81.16	136.74	7,555.4	-529.5	72.3	427.8	12.74
7,897.0	83.71	134.81	7,558.1	-543.7	86.1	447.7	15.94
7,955.0	89.26	133.46	7,561.6	-584.0	127.6	505.5	9.85
8,051.0	91.21	133.94	7,561.2	-650.3	197.0	601.5	2.09
8,145.0	91.85	134.88	7,558.7	-716.1	264.2	695.4	1.21
8,241.0	92.05	133.78	7,555.5	-783.1	332.8	791.3	1.16
8,336.0	91.21	132.71	7,552.8	-848.2	402.0	886.2	1.43
8,431.0	91.64	132.55	7,550.4	-912.5	471.8	981.1	0.48
8,527.0	91.71	133.30	7,547.6	-977.9	542.1	1,077.0	0.78
8,622.0	91.58	134.18	7,544.9	-1,043.5	610.7	1,171.9	0.94
8,715.0	91.18	132.82	7,542.6	-1,107.5	678.1	1,264.8	1.52
8,750.0	90.51	133.11	7,542.1	-1,131.4	703.8	1,299.8	2.10
8,811.0	87.92	135.38	7,543.0	-1,173.9	747.4	1,360.7	5.64
8,905.0	88.66	134.58	7,545.8	-1,240.3	813.9	1,454.7	1.16
9,001.0	89.70	138.41	7,547.1	-1,309.9	880.0	1,550.6	4.13
9,096.0	89.40	137.81	7,547.9	-1,380.7	943.4	1,645.5	0.71
9,191.0	91.28	139.57	7,547.3	-1,452.0	1,006.1	1,740.4	2.71
9,286.0	91.95	139.22	7,544.6	-1,524.1	1,067.9	1,835.1	0.80
9,381.0	91.91	138.06	7,541.4	-1,595.4	1,130.7	1,929.9	1.22
9,476.0	92.49	139.68	7,537.8	-1,666.9	1,193.1	2,024.6	1.81
9,572.0	88.99	136.25	7,536.5	-1,738.1	1,257.3	2,120.5	5.10
9,667.0	89.73	134.89	7,537.6	-1,806.0	1,323.8	2,215.5	1.63
9,762.0	92.15	138.12	7,536.1	-1,874.9	1,389.2	2,310.5	4.25
9,857.0	91.14	135.08	7,533.3	-1,943.9	1,454.4	2,405.4	3.37
9,951.0	90.94	132.68	7,531.6	-2,009.0	1,522.2	2,499.3	2.56
10,046.0	91.58	131.89	7,529.5	-2,072.9	1,592.5	2,594.2	1.07
10,141.0	92.32	131.82	7,526.3	-2,136.3	1,663.2	2,688.9	0.78
10,237.0	89.80	130.41	7,524.5	-2,199.4	1,735.5	2,784.6	3.01
10,332.0	90.00	130.99	7,524.7	-2,261.3	1,807.5	2,879.3	0.65
10,426.0	90.57	129.72	7,524.2	-2,322.2	1,879.1	2,972.9	1.48
10,521.0	90.37	133.15	7,523.4	-2,385.0	1,950.3	3,067.7	3.62
10,611.0	90.74	132.15	7,522.6	-2,446.0	2,016.5	3,157.6	1.18
10,702.0	91.07	130.04	7,521.1	-2,505.8	2,085.1	3,248.3	2.35
10,792.0	90.60	131.27	7,519.8	-2,564.4	2,153.4	3,338.0	1.46
10,882.0	91.04	133.23	7,518.5	-2,624.9	2,220.0	3,427.8	2.23
10,971.0	91.31	134.86	7,516.7	-2,686.8	2,283.9	3,516.8	1.86
11,062.0	91.54	134.19	7,514.4	-2,750.6	2,348.8	3,607.7	0.78
11,153.0	91.71	134.22	7,511.9	-2,814.0	2,414.0	3,698.7	0.19
11,242.0	91.85	135.12	7,509.1	-2,876.6	2,477.3	3,787.6	1.02
11,333.0	90.57	132.38	7,507.2	-2,939.5	2,543.0	3,878.6	3.32
11,422.0	91.75	132.91	7,505.4	-2,999.7	2,608.4	3,967.4	1.45



EOW Completion Report



Company:	Antero Resources	Local Co-ordinate Reference:	Well Gideon Unit 2H
Project:	Harrison County West Virginia	TVD Reference:	Gideon Unit 2H GL 1453' + 23' KB @ 1476.0usft
Site:	Gideon/Varner/Plaugher/Lowndes Pad	MD Reference:	Gideon Unit 2H GL 1453' + 23' KB @ 1476.0usft
Well:	Gideon Unit 2H	North Reference:	Grid
Wellbore:	Sidetrack Wellpath 1	Survey Calculation Method:	Minimum Curvature
Design:	As Drilled ST1	Database:	Oklahoma District

MAY 8 9 2013
WV Department of Environmental Protection

Survey

MD (usft)	Inc (°)	Azi (azimuth) (°)	TVD (usft)	N/S (usft)	E/W (usft)	V. Sec (usft)	DLeg (°/100usft)
11,512.0	91.64	132.66	7,502.7	-3,060.8	2,674.4	4,057.3	0.30
11,604.0	91.88	132.59	7,499.9	-3,123.1	2,742.1	4,149.2	0.27
11,699.0	92.89	131.62	7,495.9	-3,186.8	2,812.5	4,243.9	1.47
11,793.0	92.65	130.00	7,491.4	-3,248.1	2,883.6	4,337.5	1.74
11,888.0	92.15	133.59	7,487.4	-3,311.4	2,954.3	4,432.2	3.81
11,983.0	91.01	134.30	7,484.8	-3,377.3	3,022.7	4,527.1	1.41
12,078.0	91.81	133.56	7,482.5	-3,443.2	3,091.1	4,622.1	1.15
12,172.0	89.06	135.20	7,481.7	-3,508.9	3,158.3	4,716.1	3.41
12,267.0	88.25	136.31	7,484.0	-3,576.9	3,224.5	4,811.0	1.45
12,363.0	88.56	133.33	7,486.6	-3,644.6	3,292.6	4,907.0	3.12
12,457.0	88.22	133.67	7,489.3	-3,709.2	3,360.8	5,000.9	0.51
12,553.0	90.00	131.14	7,490.8	-3,774.0	3,431.6	5,096.7	3.22
12,648.0	90.40	131.59	7,490.4	-3,836.7	3,502.9	5,191.5	0.63
12,743.0	89.36	131.11	7,490.6	-3,899.5	3,574.2	5,286.2	1.21
12,837.0	89.40	131.77	7,491.7	-3,961.7	3,644.7	5,380.0	0.70
12,932.0	89.23	132.75	7,492.8	-4,025.6	3,715.0	5,474.9	1.05
13,028.0	89.80	131.97	7,493.6	-4,090.3	3,785.9	5,570.7	1.01
13,123.0	89.63	131.08	7,494.1	-4,153.3	3,857.1	5,665.5	0.95
13,218.0	90.37	131.42	7,494.1	-4,215.9	3,928.5	5,760.3	0.86
13,313.0	89.56	132.06	7,494.1	-4,279.1	3,999.4	5,855.1	1.09
13,409.0	89.87	132.27	7,494.6	-4,343.6	4,070.5	5,950.9	0.39
13,504.0	90.23	132.96	7,494.5	-4,407.9	4,140.4	6,045.8	0.82
13,599.0	88.82	132.92	7,495.3	-4,472.6	4,210.0	6,140.7	1.48
13,693.0	88.69	133.68	7,497.4	-4,537.1	4,278.4	6,234.6	0.82
13,787.0	88.92	132.72	7,499.3	-4,601.4	4,346.9	6,328.5	1.05
13,880.0	89.50	132.61	7,500.6	-4,664.4	4,415.3	6,421.4	0.63
13,975.0	89.90	133.79	7,501.1	-4,729.4	4,484.5	6,516.3	1.31
14,070.0	90.77	133.24	7,500.5	-4,794.9	4,553.4	6,611.3	1.08
14,165.0	90.23	134.97	7,499.7	-4,861.0	4,621.6	6,706.2	1.91
14,261.0	90.37	136.22	7,499.2	-4,929.5	4,688.8	6,802.2	1.31
14,356.0	89.30	134.75	7,499.5	-4,997.3	4,755.4	6,897.2	1.91
14,451.0	89.77	133.21	7,500.3	-5,063.3	4,823.7	6,992.2	1.69
14,545.0	90.81	135.39	7,499.8	-5,128.9	4,891.0	7,086.2	2.57
14,640.0	91.34	134.67	7,498.0	-5,196.1	4,958.1	7,181.1	0.94
14,735.0	90.81	131.55	7,496.2	-5,261.0	5,027.5	7,276.0	3.33
14,830.0	91.24	131.45	7,494.5	-5,323.9	5,098.6	7,370.8	0.46
14,925.0	89.36	132.60	7,494.0	-5,387.5	5,169.2	7,465.6	2.32
15,019.0	89.66	132.37	7,494.8	-5,451.0	5,238.5	7,559.5	0.40
15,115.0	89.60	133.85	7,495.4	-5,516.6	5,308.6	7,655.4	1.54
15,211.0	88.86	132.32	7,496.7	-5,582.2	5,378.7	7,751.3	1.77
15,306.0	89.16	133.13	7,498.4	-5,646.6	5,448.5	7,846.2	0.91
15,400.0	91.71	132.75	7,497.7	-5,710.7	5,517.3	7,940.1	2.74
15,495.0	91.07	131.41	7,495.4	-5,774.3	5,587.8	8,034.9	1.56
15,590.0	91.28	131.37	7,493.4	-5,837.1	5,659.0	8,129.7	0.23



Company:	Antero Resources	Local Co-ordinate Reference:	Well Gideon Unit 2H
Project:	Harrison County West Virginia	TVD Reference:	Gideon Unit 2H GL 1453' + 23' KB @ 1476.0usft
Site:	Gideon/Varner/Plaughter/Lowndes Pad	MD Reference:	Gideon Unit 2H GL 1453' + 23' KB @ 1476.0usft
Well:	Gideon Unit 2H	North Reference:	Grid
Wellbore:	Sidetrack Wellpath 1	Survey Calculation Method:	Minimum Curvature
Design:	As Drilled ST1	Database:	Oklahoma District

MD (usft)	Inc (°)	Azi (azimuth) (°)	TVD (usft)	N/S (usft)	E/W (usft)	V. Sec (usft)	DLeg (°/100usft)
15,683.0	91.95	130.22	7,490.8	-5,897.8	5,729.4	8,222.3	1.43
15,778.0	92.49	129.82	7,487.1	-5,958.9	5,802.1	8,316.8	0.71
15,871.0	93.23	129.81	7,482.5	-6,018.4	5,873.4	8,409.3	0.80
15,966.0	93.02	129.37	7,477.3	-6,078.8	5,946.5	8,503.7	0.51
16,060.0	94.46	129.44	7,471.2	-6,138.4	6,019.0	8,596.9	1.53
16,156.0	94.20	131.84	7,463.9	-6,200.7	6,091.6	8,692.3	2.51
16,251.0	94.77	131.81	7,456.5	-6,263.9	6,162.2	8,786.8	0.60
16,347.0	94.03	133.42	7,449.1	-6,328.7	6,232.6	8,882.4	1.84
16,442.0	93.93	132.34	7,442.5	-6,393.1	6,302.1	8,977.1	1.14
16,537.0	93.03	133.58	7,436.8	-6,457.8	6,371.5	9,071.9	1.61
16,632.0	93.79	132.40	7,431.1	-6,522.4	6,440.9	9,166.6	1.48
16,726.0	93.83	133.31	7,424.9	-6,586.2	6,509.6	9,260.3	0.97
16,821.0	94.40	133.41	7,418.0	-6,651.3	6,578.5	9,355.0	0.61
16,916.0	94.26	133.45	7,410.9	-6,716.4	6,647.3	9,449.7	0.15
17,011.0	93.09	133.82	7,404.8	-6,781.8	6,715.9	9,544.4	1.29
17,106.0	92.96	133.41	7,399.8	-6,847.3	6,784.6	9,639.2	0.45
17,201.0	93.42	132.85	7,394.5	-6,912.1	6,853.8	9,734.0	0.76
17,235.0	93.29	132.98	7,392.5	-6,935.2	6,878.7	9,767.9	0.54

Checked By: _____ Approved By: _____ Date: _____

RECEIVED
Office of Oil and Gas
MAY 26 2015
WV Department of
Environmental Protection