

State of West Virginia
Department of Environmental Protection - Office of Oil and Gas
Well Operator's Report of Well Work

API 47 - 033 - 05722 County Harrison District Tenmile
Quad Salem Pad Name Varner West Pad Field/Pool Name _____
Farm name Varner, James A. Well Number Gideon Unit 1H
Operator (as registered with the OOG) Antero Resources Corporation
Address 1615 Wynkoop Street City Denver State CO Zip 80202

As Drilled location NAD 83/UTM Attach an as-drilled plat, profile view, and deviation survey
Top hole Northing 4,345,139.668m Easting 539,082.453m
Landing Point of Curve Northing 4,344,737.71m Easting 539,071.97m
Bottom Hole Northing 4,343,114.946m Easting 540,786.347m

Elevation (ft) 1456' GL Type of Well New Existing Type of Report Interim Final
Permit Type Deviated Horizontal Horizontal 6A Vertical Depth Type Deep Shallow
Type of Operation Convert Deepen Drill Plug Back Redrilling Rework Stimulate
Well Type Brine Disposal CBM Gas Oil Secondary Recovery Solution Mining Storage Other _____
Type of Completion Single Multiple Fluids Produced Brine Gas NGL Oil Other _____
Drilled with Cable Rotary

Drilling Media Surface hole Air Mud Fresh Water Intermediate hole Air Mud Fresh Water Brine
Production hole Air Mud Fresh Water Brine

Mud Type(s) and Additive(s)
Air - Foam & 4% KCL

Mud - Polymer

RECEIVED
Office of Oil and Gas

MAY 26 2015

WV Department of
Environmental Protection

Date permit issued 4/3/2013 Date drilling commenced 7/27/2013 Date drilling ceased 9/23/2013
Date completion activities began 2/6/2014 Date completion activities ceased 7/6/2014
Verbal plugging (Y/N) N/A Date permission granted N/A Granted by N/A

Please note: Operator is required to submit a plugging application within 5 days of verbal permission to plug

Freshwater depth(s) ft 112', 173' Open mine(s) (Y/N) depths N
Salt water depth(s) ft None Identified Void(s) encountered (Y/N) depths N
Coal depth(s) ft 437', 497', 707', 1402', 1462', 1979' Cavern(s) encountered (Y/N) depths N
Is coal being mined in area (Y/N) N

Reviewed by:
AL 5/27/15
06/05/2015
W.S. 6/5/15

API 47-033 - 05722 Farm name Varner, James A. Well number Gideon Unit 1H

CASING STRINGS	Hole Size	Casing Size	Depth	New or Used	Grade wt/ft	Basket Depth(s)	Did cement circulate (Y/N) * Provide details below*
Conductor	24"	20"	40'	New	94#/J-55	N/A	Y
Surface	17-1/2"	13-3/8"	432'	New	48#/H-40	N/A	N*
Coal							
Intermediate 1	12-1/4"	9-5/8"	2558'	New	36#/J-55	N/A	Y
Intermediate 2							
Intermediate 3							
Production	8-3/4"/8-1/2"	5-1/2"	16,177'	New	20#/P-110	N/A	Y
Tubing		2-3/8"	7789'	New	4.7#/N-80	N/A	N/A
Packer type and depth set		N/A					

Comment Details *13-3/8" cement did not return to surface. Insepector Sam Ward was notified at 12:30am on 8/22/2013. Pumped 170 additional sacks and return to surface was successful.

CEMENT DATA	Class/Type of Cement	Number of Sacks	Slurry wt (ppg)	Yield (ft ³ /sks)	Volume (ft ³)	Cement Top (MD)	WOC (hrs)
Conductor	Class A	193 sx	15.6	1.18	38 Cu. Ft.	0'	8 hrs
Surface	Class A	503 sx	15.6	1.18	300 Cu. Ft.	0' See Comment above	8 hrs
Coal							
Intermediate 1	Class A	933 sx	15.6	1.18	801 Cu. Ft.	0'	8 hrs
Intermediate 2							
Intermediate 3							
Production	Class H	1068 sx (Lead), 1375 sx (Tail)	13.5 (Lead), 15.2 (Tail)	1.44 (Lead), 1.80 (Tail)	3235 Cu. Ft.	~500' into Intermediate Casing	8 hrs
Tubing							

Drillers TD (ft) 16,180' MD, 7490' TVD (BHL), 7538' TVD (Deepest Point Drilled) Loggers TD (ft) 16,134' MD
 Deepest formation penetrated Marcellus Plug back to (ft) N/A
 Plug back procedure N/A

Kick off depth (ft) 7212'

Check all wireline logs run caliper density deviated/directional induction
 neutron resistivity gamma ray temperature sonic

Well cored Yes No Conventional Sidewall Were cuttings collected Yes No

DESCRIBE THE CENTRALIZER PLACEMENT USED FOR EACH CASING STRING _____

Conductor - 0
 Surface - 1 above guide shoe, 1 above insert float, 1 every 4th joint to surface
 Intermediate - 1 above float joint, 1 above float collar, 1 every 4th joint to surface
 Production - 1 above float joint, 1 below float collar, 1 every 3rd joint to top of cement

RECEIVED
Office of Oil and Gas

WAS WELL COMPLETED AS SHOT HOLE Yes No DETAILS _____
 MAY 26 2015

WAS WELL COMPLETED OPEN HOLE? Yes No DETAILS _____

WV Department of
Environmental Protection

WERE TRACERS USED Yes No TYPE OF TRACER(S) USED Radioactive & Chemical

API 47- 033 - 05722 Farm name Varner, James A. Well number Gideon Unit 1H

PRODUCING FORMATION(S)	DEPTHS		
Marcellus	7492' (Top)	TVD	7883' (Top) MD

Please insert additional pages as applicable.

GAS TEST Build up Drawdown Open Flow OIL TEST Flow Pump

SHUT-IN PRESSURE Surface 3600 psi Bottom Hole --- psi DURATION OF TEST --- hrs

OPEN FLOW Gas 9887 mcfpd Oil --- bpd NGL --- bpd Water 175 bpd GAS MEASURED BY Estimated Orifice Pilot

LITHOLOGY/ FORMATION	TOP DEPTH IN FT NAME TVD	BOTTOM DEPTH IN FT TVD	TOP DEPTH IN FT MD	BOTTOM DEPTH IN FT MD	DESCRIBE ROCK TYPE AND RECORD QUANTITY AND TYPE OF FLUID (FRESHWATER, BRINE, OIL, GAS, H ₂ S, ETC)
-------------------------	--------------------------------	------------------------------	--------------------------	-----------------------------	--

	0		0		

*PLEASE SEE ATTACHED EXHIBIT 3

Please insert additional pages as applicable.

Drilling Contractor Frontier Drilling LLC
Address 562 Spring Run Road City Pennsboro State WV Zip 26415

Logging Company Rush Wellsite Services
Address 600 Alpha Drive City Canonsburg State PA Zip 15317

Cementing Company Allied Oil & Gas Services, LLC
Address 1036 East Main Street City Bridgeport State WV Zip 26330

Stimulating Company U.S. Well Services
Address 533 Industrial Park Drive City Jane Lew State WV Zip 26378

Stimulating Company: Nabors Completion & Production Services, Co.
Address: 1650 Hackers Creek City: Jane Lew State: WV Zip: 26378

Completed by Natalie Komp Telephone 303-357-6820
Signature *Natalie Komp* Title Permitting Agent Date 5/5/2015

Submittal of Hydraulic Fracturing Chemical Disclosure Information Attach copy of FRACFOCUS Registry

RECEIVED
Office of Oil and Gas
MAY 26 2015
06/05/2015
WV Department of
Environmental Protection

API 47-033-05722 Farm Name Varner, James A. Well Number Gideon Unit 1H

EXHIBIT 1

Stage No.	Perforation Date	Perforated from MD ft.	Perforated to MD ft.	Number of Perforations	Formations
1	6-Feb-14	15541'	15730'	60	Marcellus
2	24-Feb-14	15341'	15510'	60	Marcellus
3	25-Feb-14	15140'	15309'	60	Marcellus
4	26-Feb-14	14940'	15109'	60	Marcellus
5	27-Feb-14	14739'	14908'	60	Marcellus
6	27-Feb-14	16383'	16550'	60	Marcellus
7	28-Feb-14	14339'	14508'	60	Marcellus
8	28-Feb-14	14138'	14307'	60	Marcellus
9	1-Mar-14	13938'	14107'	60	Marcellus
10	10-Jun-14	13737'	13906'	60	Marcellus
11	11-Jun-14	13537'	13706'	60	Marcellus
12	11-Jun-14	13337'	13506'	60	Marcellus
13	11-Jun-14	13136'	13305'	60	Marcellus
14	12-Jun-14	12936'	13105'	60	Marcellus
15	12-Jun-14	12735'	12904'	60	Marcellus
16	12-Jun-14	12335'	12704'	60	Marcellus
17	13-Jun-14	12335'	12504'	60	Marcellus
18	13-Jun-14	12134'	12303'	60	Marcellus
19	13-Jun-14	11934'	12103'	60	Marcellus
20	13-Jun-14	11733'	11902'	60	Marcellus
21	14-Jun-14	11533'	11702'	60	Marcellus
22	14-Jun-14	11333'	11502'	60	Marcellus
23	14-Jun-14	11132'	11301'	60	Marcellus
24	14-Jun-14	10932'	11101'	60	Marcellus
25	14-Jun-14	10731'	10900'	60	Marcellus
26	15-Jun-14	10531'	10700'	60	Marcellus
27	15-Jun-14	10331'	10500'	60	Marcellus
28	15-Jun-14	10130'	10299'	60	Marcellus
29	15-Jun-14	9930'	10099'	60	Marcellus
30	15-Jun-14	9729'	9898'	60	Marcellus
31	15-Jun-14	9529'	9698'	60	Marcellus
32	16-Jun-14	9329'	9498'	60	Marcellus
33	16-Jun-14	9128'	9297'	60	Marcellus
34	17-Jun-14	8928'	9097'	60	Marcellus
35	17-Jun-14	8727'	8896'	60	Marcellus
36	17-Jun-14	8527'	8696'	60	Marcellus
37	18-Jun-14	8327'	8496'	60	Marcellus
38	18-Jun-14	8126'	8295'	60	Marcellus
39	18-Jun-14	7926'	8095'	60	Marcellus

RECEIVED
Office of Oil and Gas

MAY 26 2015

WV Department of
Environmental Protection
05/05/2015

EXHIBIT 2

Stage No.	Stimulations Date	Avg Pump Rate	Avg Treatment Pressure (PSI)	Max Breakdown Pressure (PSI)	ISIP (PSI)	Amount of Proppant (lbs)	Amount of Water (bbls)	Amount of Nitrogen/ other (units)
1	23-Feb-14	74.5	7,887	5,851	4,846	189,040	7,278	N/A
2	24-Feb-14	67.0	7,850	5,974	4,799	168,600	7,335	N/A
3	25-Feb-14	72.0	7,745	5,722	5,498	165,900	7,340	N/A
4	26-Feb-14	76.0	8,026	5,823	4,241	251,320	6,783	N/A
5	27-Feb-14	77.0	7,877	5,769	3,758	255,400	6,758	N/A
6	27-Feb-14	75.0	7,691	5,902	4,241	250,780	6,756	N/A
7	28-Feb-14	74.0	7,965	6,151	4,698	208,820	7,216	N/A
8	28-Feb-14	74.0	8,095	5,970	4,129	253,300	6,672	N/A
9	1-Mar-14	65.0	8,524	6,136	3,614	117,600	4,749	N/A
10	10-Jun-14	78.4	7,393	6,096	5,438	250,300	6,781	N/A
11	11-Jun-14	75.5	7,798	6,671	4,861	106,000	6,936	N/A
12	11-Jun-14	71.0	7,856	6,079	5,066	78,300	5,874	N/A
13	11-Jun-14	68.7	7,696	5,845	4,404	147,700	7,104	N/A
14	12-Jun-14	72.8	6,901	6,622	4,310	254,800	6,692	N/A
15	12-Jun-14	74.7	6,883	5,668	4,462	237,600	6,650	N/A
16	12-Jun-14	76.4	7,417	6,645	3,972	190,100	6,975	N/A
17	13-Jun-14	76.3	6,833	5,640	4,606	244,400	5,907	N/A
18	13-Jun-14	73.9	7,474	6,139	3,926	141,200	6,824	N/A
19	13-Jun-14	73.7	7,330	6,489	4,350	141,400	6,770	N/A
20	13-Jun-14	75.6	7,697	6,321	4,160	218,200	6,779	N/A
21	14-Jun-14	76.2	7,460	6,458	4,309	210,300	6,827	N/A
22	14-Jun-14	74.5	7,354	5,933	4,708	250,500	6,512	N/A
23	14-Jun-14	73.6	7,431	6,170	4,202	235,800	6,387	N/A
24	14-Jun-14	74.4	7,264	6,028	4,783	254,300	6,491	N/A
25	14-Jun-14	71.8	7,567	5,512	4,257	181,300	6,905	N/A
26	15-Jun-14	75.8	7,254	6,013	4,889	262,300	6,889	N/A
27	15-Jun-14	73.5	7,218	6,111	4,532	210,400	6,977	N/A
28	15-Jun-14	73.6	6,944	5,820	4,570	252,700	6,485	N/A
29	15-Jun-14	72.0	7,439	5,823	4,468	201,900	6,825	N/A
30	15-Jun-14	73.8	6,830	5,852	4,310	254,500	6,453	N/A
31	15-Jun-14	72.0	7,117	5,823	4,523	186,100	6,450	N/A
32	16-Jun-14	72.4	6,744	5,750	5,125	182,600	6,806	N/A
33	16-Jun-14	72.8	7,137	5,786	4,128	215,100	6,254	N/A
34	17-Jun-14	73.6	6,788	5,748	4,634	240,400	6,220	N/A
35	17-Jun-14	73.9	6,755	5,542	5,472	154,600	6,416	N/A
36	17-Jun-14	73.2	6,866	6,160	4,251	229,600	6,832	N/A
37	18-Jun-14	72.7	7,135	6,511	4,233	230,600	6,236	N/A
38	18-Jun-14	74.2	6,965	6,543	4,352	244,500	6,133	N/A
39	18-Jun-14	74.2	6,965	6,543	4,352	244,500	6,133	N/A
	AVG=	73.6	7,389	6,042	4,499	8,112,760	258,410	TOTAL

RECEIVED
Office of Oil and Gas

MAY 26 2015

WV Department of
Environmental Protection

06/05/2015

EXHIBIT 3

LITHOLOGY/ FORMATION	TOP DEPTH (TVD)	BOTTOM DEPTH (TVD)	TOP DEPTH (MD)	BOTTOM DEPTH (MD)
	From Surface	From Surface	From Surface	From Surface
Freshwater	112	NA	112	NA
Freshwater	173	NA	173	NA
Silty Shale	0	437	0	437
Coal	437	467	437	467
Sandstone	467	497	467	497
Coal	497	527	497	527
Sandstone	527	597	527	597
Silty Shale	597	667	597	667
Sandstone	667	707	667	707
Coal	707	737	707	737
Sandstone	737	797	737	797
Sandy Shale	797	887	797	887
Shale	887	977	887	977
Sandy Siltstone	977	1,107	977	1,107
Shale	1,107	1,307	1,107	1,307
Sandstone	1,307	1,402	1,307	1,402
Coal	1,402	1,427	1,402	1,427
Shale	1,427	1,462	1,427	1,462
Coal	1,462	1,487	1,462	1,487
Shale	1,487	1,577	1,487	1,577
Sandstone	1,577	1,637	1,577	1,637
Shale	1,637	1,797	1,637	1,797
Sandy Siltstone/Coal	1,797	1,827	1,797	1,827
Silty Sandstone	1,827	1,979	1,827	1,979
Coal	1,979	1,997	1,979	1,997
Sandy Shale/Coal	1,997	2,335	1,997	2,335
Big Lime	2,335	2,471	2,335	2,471
Big Injun	2,471	2,816	2,471	2,816
Gantz Sand	2,816	2,904	2,816	2,904
Fifty Foot Sandstone	2,904	3,021	2,904	3,021
Gordon	3,021	3,341	3,021	3,341
Fifth Sandstone	3,341	3,375	3,341	3,375
Bayard	3,375	3,722	3,375	3,722
Warren	3,722	4,148	3,722	4,148
Speechley	4,148	4,457	4,148	4,457
Baltown	4,457	4,792	4,457	4,792
Bradford	4,792	5,316	4,792	5,317
Benson	5,316	5,606	5,317	5,613
Alexander	5,606	5,834	5,613	5,853
Elk	5,834	6,296	5,853	6,357
Rhinestreet	6,296	6,927	6,357	7,073
Sycamore	6,927	7,146	7,073	7,324
Middlesex	7,146	7,302	7,324	7,525
Burkett	7,302	7,329	7,525	7,561
Tully	7,329	7,492	7,561	7,883
Marcellus	7,492	NA	7,883	NA

RECEIVED
Office of Oil and Gas

MAY 26 2015

WV Department of
Environmental Protection
06/05/2015

Hydraulic Fracturing Fluid Product Component Information Disclosure

Job Start Date:	2/23/2014
Job End Date:	6/18/2014
State:	West Virginia
County:	Harrison
API Number:	47-033-05722-00-00
Operator Name:	Antero Resources Corporation
Well Name and Number:	Gideon Unit 1H
Longitude:	-80.54721400
Latitude:	39.25461400
Datum:	NAD27
Federal/Tribal Well:	NO
True Vertical Depth:	7,537
Total Base Water Volume (gal):	8,295,966
Total Base Non Water Volume:	0



RECEIVED
Office of Oil and Gas

MAY 26 2015

Hydraulic Fracturing Fluid Composition:

Trade Name	Supplier	Purpose	Ingredients	Abstract Service Number (CAS #)	Maximum Ingredient Concentration in Additive (% by mass)**	Maximum Ingredient Concentration in HF Fluid (% by mass)**	Comments
Water	ANTERO RESOURCES	Water					
			Water	7732-18-5	100.00000	91.52971	
Sand	Nabors Completion and Production Services	Sand - Bulk - West Virginia					
			Crystalline Silica, quartz	14808-60-7	99.90000	4.62158	
			Aluminum Oxide	1344-28-1	1.10000	0.05089	
			Iron Oxide	1309-37-1	0.10000	0.00463	
			Titanium Oxide	13463-67-7	0.10000	0.00463	
Sand	Nabors Completion and Production Services	Sand - Bulk - West Virginia					
			Crystalline Silica, quartz	14808-60-7	99.90000	2.78339	
			Aluminum Oxide	1344-28-1	1.10000	0.03065	
			Titanium Oxide	13463-67-7	0.10000	0.00279	
			Iron Oxide	1309-37-1	0.10000	0.00279	
Sand	Nabors Completion and Production Services	Sand - Bulk - West Virginia					
			Crystalline Silica, quartz	14808-60-7	99.90000	0.83669	
			Aluminum Oxide	1344-28-1	1.10000	0.00921	

WV Department of Environmental Protection

MAY 26 2015

			Iron Oxide	1309-37-1	0.10000	0.00084	
LSG-100L	Nabors Completion and Production Services	Gelling Agents	Titanium Oxide	13463-67-7	0.10000	0.00084	
WFR-3B	Nabors Completion and Production Services	Friction Reducer	Petroleum Distillates	64742-47-8	70.00000	0.05885	
			Hydrotreated light distillates, non-aromatic, BTEX free	64742-47-8	30.00000	0.02352	
			Ethoxylated alcohols	68002-97-1	15.00000	0.01176	
			Ethoxylated oleylamine	26635-93-8	5.00000	0.00392	
HCl Acid (12.5-18.0%) 22 Baume	Nabors Completion and Production Services	Bulk Acid	Water	7732-18-5	100.00000	0.01165	
KR-153SL	Nabors Completion and Production Services	Biocides					
			Polyethylene-Glycol	25322-68-3	50.00000	0.00712	
			2,2-dibromo-3-nitropropionamide	10222-01-2	20.00000	0.00285	
HCl Acid (12.5-18.0%) 22 Baume	Nabors Completion and Production Services	Bulk Acid					
Super GREEN SOLV-M	Nabors Completion and Production Services	Paraffin & Scale Additives	22° Baume Hydrochloric Acid	7647-01-0	100.00000	0.00953	
			Aliphatic Hydrocarbons	Proprietary	95.00000	0.00570	
			Dodecane	Proprietary	14.00000	0.00084	
			tetradecane	Proprietary	11.00000	0.00066	
			Tridecane	Proprietary	9.00000	0.00054	
			Undecane	Proprietary	8.00000	0.00048	
Super TSC 2 LT	Nabors Completion and Production Services	Paraffin & Scale Additives					
			Bis(hexamethylene)triamine Penta (methylene phosphonic acid), Sodium Salt	35657-77-3	15.00000	0.00225	
OB-2 LT	Nabors Completion and Production Services	Gel Breakers	Ammonium Persulfate	7727-54-0	85.00000	0.00063	
			Crystalline Silica (in the form of quartz)	14808-60-7	10.00000	0.00007	
Acid Inhibitor 2 (AI-2)	Nabors Completion and Production Services	Acid Corrosion Inhibitors					
			Propargyl Alcohol	107-19-7	40.00000	0.00014	
			Glycol Ethers	111-46-6	40.00000	0.00014	
			Isopropyl Alcohol	67-63-0	40.00000	0.00014	

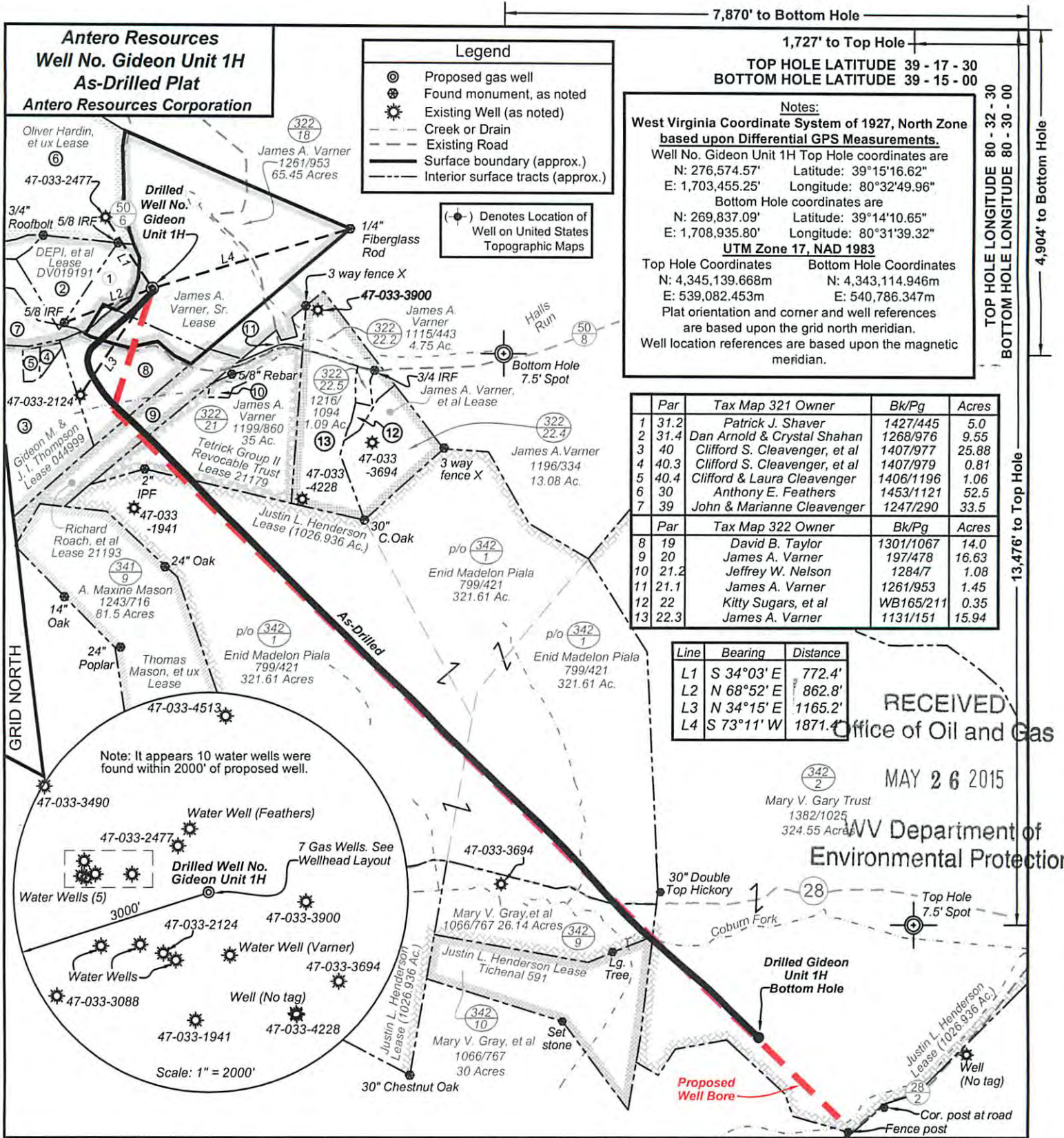
WV Department of Environmental Protection

EB-4L	Nabors Completion and Production Services	Gel Breakers	Ethoxylated Nonylphenol Tar bases, quinoline derivs, benzyl chloride-quaternized	68412-54-4 72480-70-7	13.00000 10.00000	0.00004 0.00003	
			Ethylene Glycol	107-21-1	40.00000	0.00016	
Ingredients shown above are subject to 29 CFR 1910.1200(i) and appear on Material Safety Data Sheets (MSDS). Ingredients shown below are Non-MSDS.							
	Nabors Completion and Production Services	Other Ingredients					
			guar gum	9000-30-0	50.00000	0.04203	
			Anionic Polyacrylamide	910644-97-2	40.00000	0.03136	
			Water	7732-18-5	40.00000	0.03136	
			Water	7732-18-5	90.00000	0.01351	
			Propylene glycol	57-55-6	15.00000	0.01176	
			Water	7732-18-5	80.00000	0.01139	
			Crystalline Silica (in the form of quartz)	14808-60-7	2.00000	0.00168	
			Surfactant	68439-51-0	2.00000	0.00168	
			Proprietary	Proprietary	2.00000	0.00157	
			Sugar	57-50-1	100.00000	0.00040	
			Proprietary	Proprietary	100.00000	0.00040	
			Water	7732-18-5	100.00000	0.00020	
			Water	7732-18-5	48.00000	0.00016	
			Alkali Chloride salt	Proprietary	15.00000	0.00011	
			2-Butoxyethanol	111-76-2	13.00000	0.00004	
			Proprietary	Proprietary	1.00000	0.00000	
			Proprietary	Proprietary	1.00000	0.00000	
			Proprietary	Proprietary	1.00000	0.00000	
			Proprietary	Proprietary	1.00000	0.00000	
			Dioxane	123-91-1	1.00000	0.00000	
			Organophylic Clay	68953-58-2			

* Total Water Volume sources may include fresh water, produced water, and/or recycled water
** Information is based on the maximum potential for concentration and thus the total may be over 100%

Note: For Field Development Products (products that begin with FDP), MSDS level only information has been provided. Ingredient information for chemicals subject to 29 CFR 1910.1200(i) and Appendix D are obtained from suppliers Material Safety Data Sheets (MSDS)

RECEIVED
Office of Oil and Gas
MAY 26 2015
WV Department of
Environmental Protection



7,870' to Bottom Hole
1,727' to Top Hole

TOP HOLE LATITUDE 39 - 17 - 30
BOTTOM HOLE LATITUDE 39 - 15 - 00

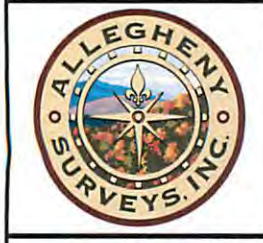
Notes:
West Virginia Coordinate System of 1927, North Zone based upon Differential GPS Measurements.
Well No. Gideon Unit 1H Top Hole coordinates are
N: 276,574.57' Latitude: 39°15'16.62"
E: 1,703,455.25' Longitude: 80°32'49.96"
Bottom Hole coordinates are
N: 269,837.09' Latitude: 39°14'10.65"
E: 1,708,935.80' Longitude: 80°31'39.32"
UTM Zone 17, NAD 1983
Top Hole Coordinates Bottom Hole Coordinates
N: 4,345,139.668m N: 4,343,114.946m
E: 539,082.453m E: 540,786.347m
Plat orientation and corner and well references are based upon the grid north meridian.
Well location references are based upon the magnetic meridian.

Par	Tax Map 321 Owner	Bk/Pg	Acres
1	Patrick J. Shaver	1427/445	5.0
2	Dan Arnold & Crystal Shahan	1268/976	9.55
3	Clifford S. Cleavenger, et al	1407/977	25.88
4	Clifford S. Cleavenger, et al	1407/979	0.81
5	Clifford & Laura Cleavenger	1406/1196	1.06
6	Anthony E. Feathers	1453/1121	52.5
7	John & Marianne Cleavenger	1247/290	33.5

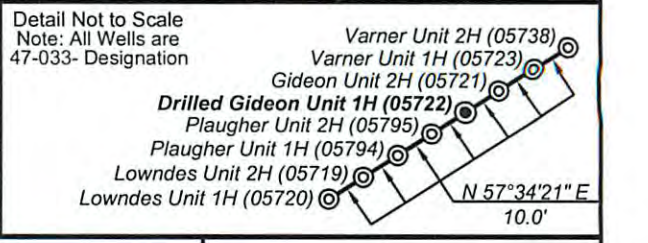
Par	Tax Map 322 Owner	Bk/Pg	Acres
8	David B. Taylor	1301/1067	14.0
9	James A. Varner	197/478	16.63
10	Jeffrey W. Nelson	1284/7	1.08
11	James A. Varner	1261/953	1.45
12	Kitty Sugars, et al	WB165/211	0.35
13	James A. Varner	1131/151	15.94

Line	Bearing	Distance
L1	S 34°03' E	772.4'
L2	N 68°52' E	862.8'
L3	N 34°15' E	1165.2'
L4	S 73°11' W	1871.4'

RECEIVED
Office of Oil and Gas
MAY 26 2015
WV Department of Environmental Protection



Top Hole coordinates verified by survey grade GPS. As-drilled data and information was provided by Antero Resources Corporation. Allegheny Surveys, Inc. (ASI) is not certifying the data and information provided. ASI is not responsible for any errors or inaccuracies with the data and information that has been provided.



FILE NO: 153-36-TM-12
DRAWING NO: Gideon 1H Well Plat As-Drill
SCALE: 1" = 1200'
MINIMUM DEGREE OF ACCURACY: Submeter
PROVEN SOURCE OF ELEVATION: WVDOT, Bridgeport, WV

STATE OF WEST VIRGINIA
DEPARTMENT OF ENVIRONMENTAL PROTECTION
OIL AND GAS DIVISION

DATE: March 30 2015
OPERATOR'S WELL NO. Gideon Unit 1H
API WELL NO
47 - 033 - 05722
STATE COUNTY PERMIT

WELL TYPE: OIL GAS LIQUID INJECTION WASTE DISPOSAL
(IF GAS) PRODUCTION: STORAGE DEEP SHALLOW
LOCATION: ELEVATION: Original Grade - 1474' Existing Grade - 1456' WATERSHED: Tenmile Creek QUADRANGLE: Salem & Big Isaac
DISTRICT: Tenmile-Outside COUNTY: Harrison
SURFACE OWNER: James A. Varner Justin L. Henderson; James A. Varner, Sr.; Tetrick Group II Revocable Trust; Tichenal 591 ACREAGE: 65.45 62.394 1026.936
ROYALTY OWNER: Gideon M. & J. I. Thompson; Richard Roach, et al; Justin L. Henderson LEASE NO: 044999; 21193; 21179 ACREAGE: 144; 17.5; 35; 30
PROPOSED WORK: DRILL CONVERT DRILL DEEPER FRACTURE OR STIMULATE PLUG OFF OLD FORMATION
 PERFORATE NEW FORMATION OTHER PHYSICAL CHANGE IN WELL (SPECIFY) As-Drilled
 PLUG AND ABANDON CLEAN OUT AND REPLUG TARGET FORMATION: Marcellus Shale DEPTH: 7,490' TVD 16,180' MD

WELL OPERATOR: Antero Resources Corporation DESIGNATED AGENT: Dianna Stamper - CT Corporation System
ADDRESS: 1615 Wynkoop Street ADDRESS: 5400 D Big Tyler Road
Denver, CO 80202 Charleston, WV 25313