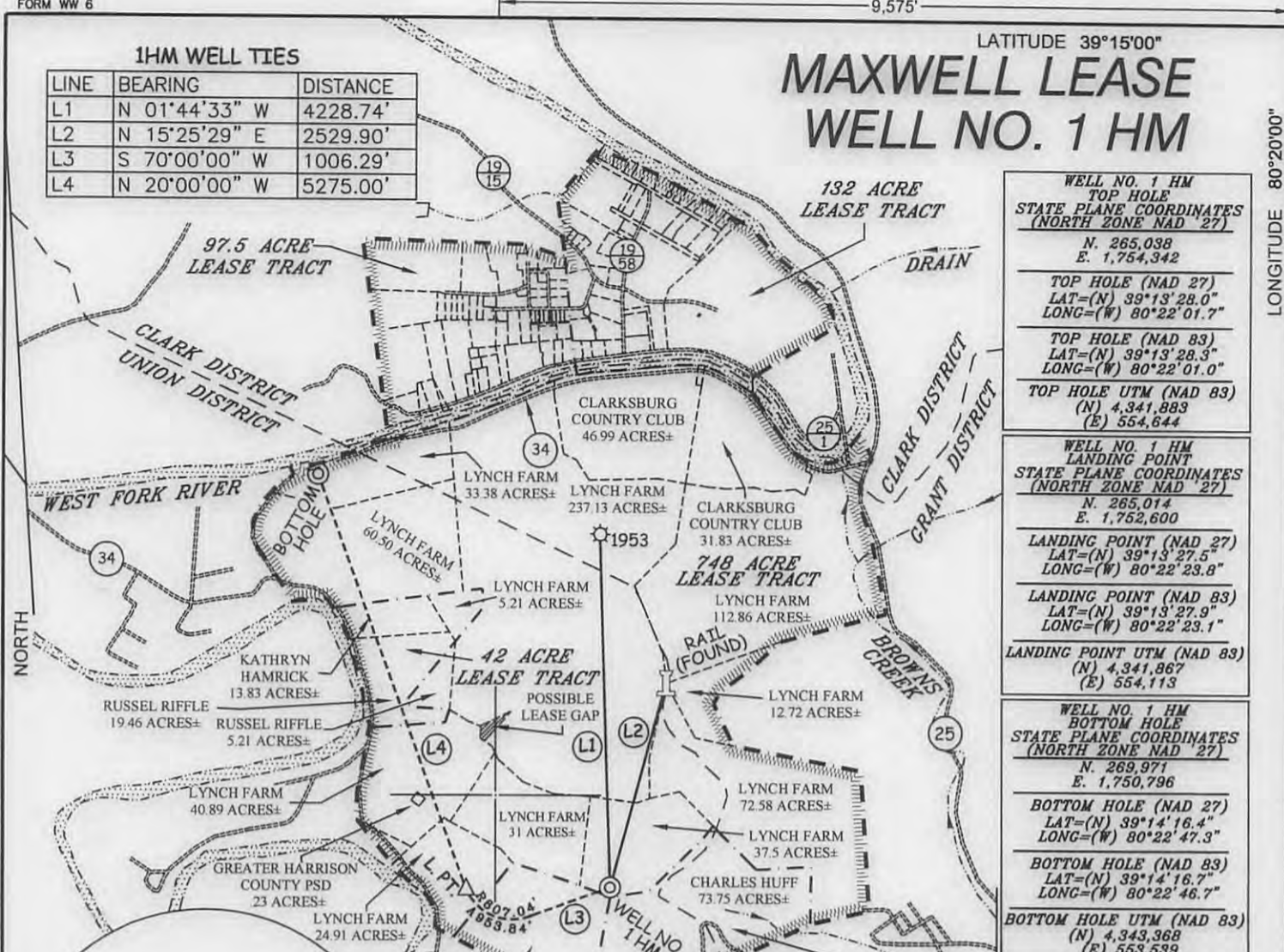


MAXWELL LEASE WELL NO. 1 HM

LONGITUDE 80°20'00"

LINE	BEARING	DISTANCE
L1	N 01°44'33" W	4228.74'
L2	N 15°25'29" E	2529.90'
L3	S 70°00'00" W	1006.29'
L4	N 20°00'00" W	5275.00'



WELL NO. 1 HM TOP HOLE STATE PLANE COORDINATES (NORTH ZONE NAD '27) N. 265,038 E. 1,754,342 TOP HOLE (NAD 27) LAT=(N) 39°13'28.0" LONG=(W) 80°22'01.7" TOP HOLE (NAD 83) LAT=(N) 39°13'28.3" LONG=(W) 80°22'01.0" TOP HOLE UTM (NAD 83) (N) 4,341,883 (E) 554,644
WELL NO. 1 HM LANDING POINT STATE PLANE COORDINATES (NORTH ZONE NAD '27) N. 265,014 E. 1,752,600 LANDING POINT (NAD 27) LAT=(N) 39°13'27.5" LONG=(W) 80°22'23.8" LANDING POINT (NAD 83) LAT=(N) 39°13'27.9" LONG=(W) 80°22'23.1" LANDING POINT UTM (NAD 83) (N) 4,341,867 (E) 554,113
WELL NO. 1 HM BOTTOM HOLE STATE PLANE COORDINATES (NORTH ZONE NAD '27) N. 269,971 E. 1,750,796 BOTTOM HOLE (NAD 27) LAT=(N) 39°14'16.4" LONG=(W) 80°22'47.3" BOTTOM HOLE (NAD 83) LAT=(N) 39°14'16.7" LONG=(W) 80°22'46.7" BOTTOM HOLE UTM (NAD 83) (N) 4,343,368 (E) 553,539

REFERENCES



NOTES ON SURVEY

1. TIES TO WELLS, REFERENCES, AND CORNERS ARE BASED ON GRID NORTH FOR THE WV STATE PLANE COORDINATE SYSTEM NORTH ZONE NAD '27.
2. LEASE BOUNDARY SHOWN HEREON TAKEN FROM DEED BOOK 142 PAGE 484 AND ADJOINING DEEDS.
3. SURFACE OWNER AND ADJOINER INFORMATION TAKEN FROM THE ASSESSOR AND COUNTY CLERK RECORDS OF HARRISON COUNTY IN JULY, 2012.
4. WELL LAT./LONG. (NAD'27) ESTABLISHED BY DGPS(SURVEY GRADE).



I THE UNDERSIGNED, HEREBY CERTIFY THAT THIS PLAT IS CORRECT TO THE BEST OF MY KNOWLEDGE AND BELIEF AND SHOWS ALL THE INFORMATION REQUIRED BY LAW AND THE REGULATIONS ISSUED AND PRESCRIBED BY THE DIVISION OF ENVIRONMENTAL PROTECTION.

P.S. 677 *Gregory A. Smith*



(+) DENOTES LOCATION OF WELL ON UNITED STATES TOPOGRAPHIC MAPS.
 DATE APRIL 3, 20 13
 REVISED DATE APRIL 11, 20 13
 OPERATORS WELL NO. MAXWELL 1HM
 API WELL NO. 47 - 33 - 5739 H6A
 STATE COUNTY PERMIT

MINIMUM DEGREE OF ACCURACY 1/200 FILE NO. 7995P1HMR3(448-13)
 PROVEN SOURCE OF ELEVATION DGPS (SUBMETER MAPPING GRADE) SCALE 1" = 2,000'

STATE OF WEST VIRGINIA
 DIVISION OF ENVIRONMENTAL PROTECTION
 OFFICE OF OIL AND GAS

WELL TYPE: OIL GAS LIQUID INJECTION WASTE DISPOSAL IF "GAS" PRODUCTION STORAGE DEEP SHALLOW

LOCATION: ELEVATION 1,462' WATERSHED WEST FORK RIVER DISTRICT UNION COUNTY HARRISON QUADRANGLE MOUNT CLARE 7.5'

SURFACE OWNER LYNCH FARM, LLC ACREAGE 37.5± ROYALTY OWNER WBM HEIRS PROPERTIES, LLC ACREAGE 748, 42, 44.21, 73.75, 97.5 & 132±

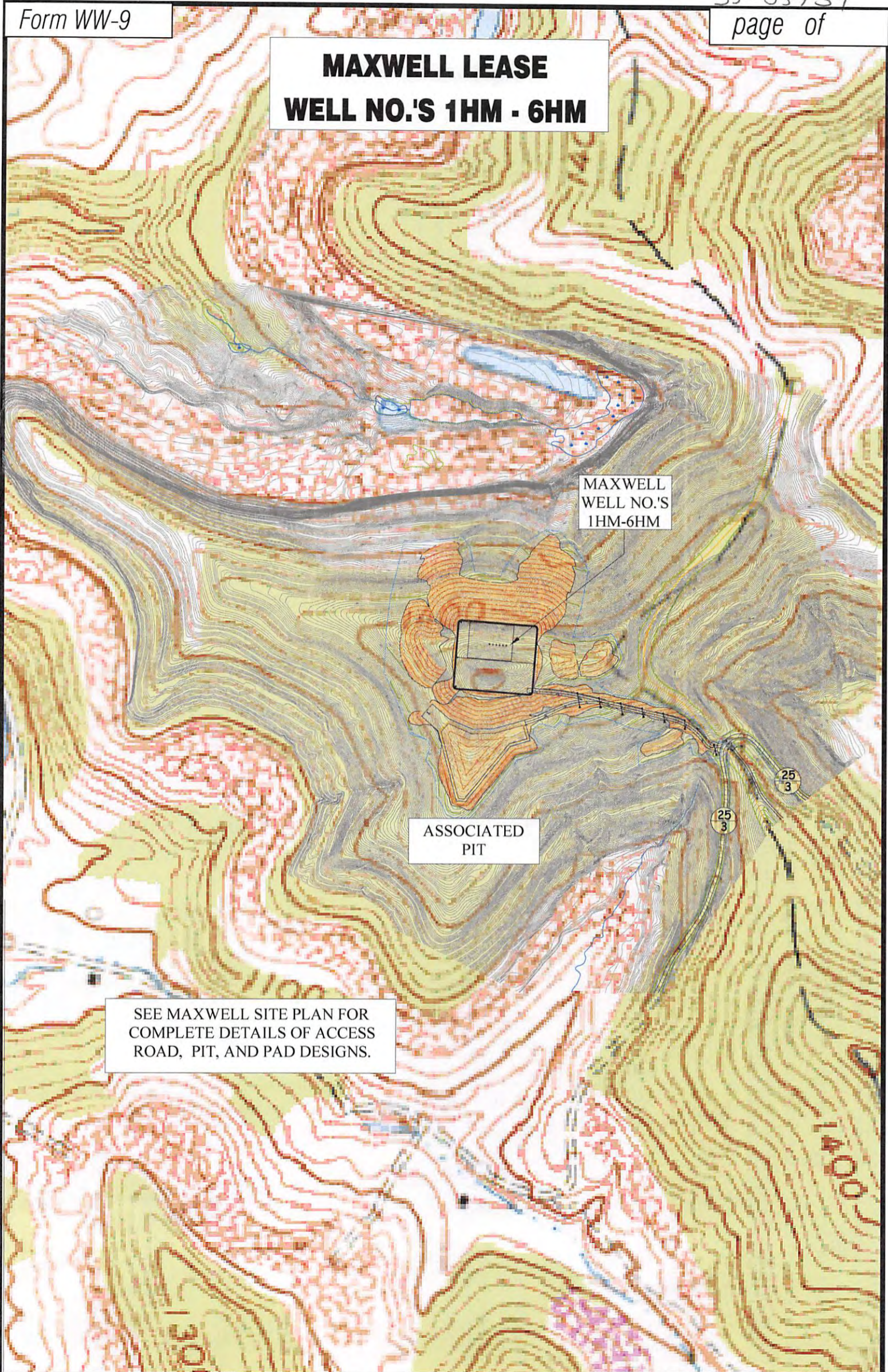
PROPOSED WORK: DRILL CONVERT DRILL DEEPER REDRILL FRACTURE OR STIMULATE PLUG OFF OLD FORMATION PERFORATE NEW FORMATION PLUG AND ABANDON CLEAN OUT AND REPLUG OTHER

PHYSICAL CHANGE IN WELL (SPECIFY) TARGET FORMATION MARCELLUS ESTIMATED DEPTH 7,590' TVD / TMD 13,980'

WELL OPERATOR PDC MOUNTAINEER, LLC DESIGNATED AGENT JAMIE HAGA
 ADDRESS 120 GENESIS BOULEVARD BRIDGEPORT, WV 26330 ADDRESS 120 GENESIS BOULEVARD BRIDGEPORT, WV 26330

06/28/2013

MAXWELL LEASE WELL NO.'S 1HM - 6HM



SEE MAXWELL SITE PLAN FOR
COMPLETE DETAILS OF ACCESS
ROAD, PIT, AND PAD DESIGNS.

MAXWELL
WELL NO.'S
1HM-6HM

ASSOCIATED
PIT



Professional Energy Consultants
A DIVISION OF SMITH LAND SURVEYING

SURVEYORS
PROJECT MGMT.



ENGINEERS
ENVIRONMENTAL

226 West Main St.
P.O. Box 150
Glenville, WV 26031
(304) 462-5634

56055 Diles Bottom Road
Shadyside, OH 43047
(740) 671-9911

HONESTY, INTEGRITY, QUALITY

TOPO SECTION OF USGS
MOUNT CLARE 7.5' QUADRANGLE

SCALE: 1"=500'



06/28/2013

DRAWN BY C.P.M.	FILE NO. 7995	DATE 03-28-13	CADD FILE: 7995REC.DWG
--------------------	------------------	------------------	---------------------------