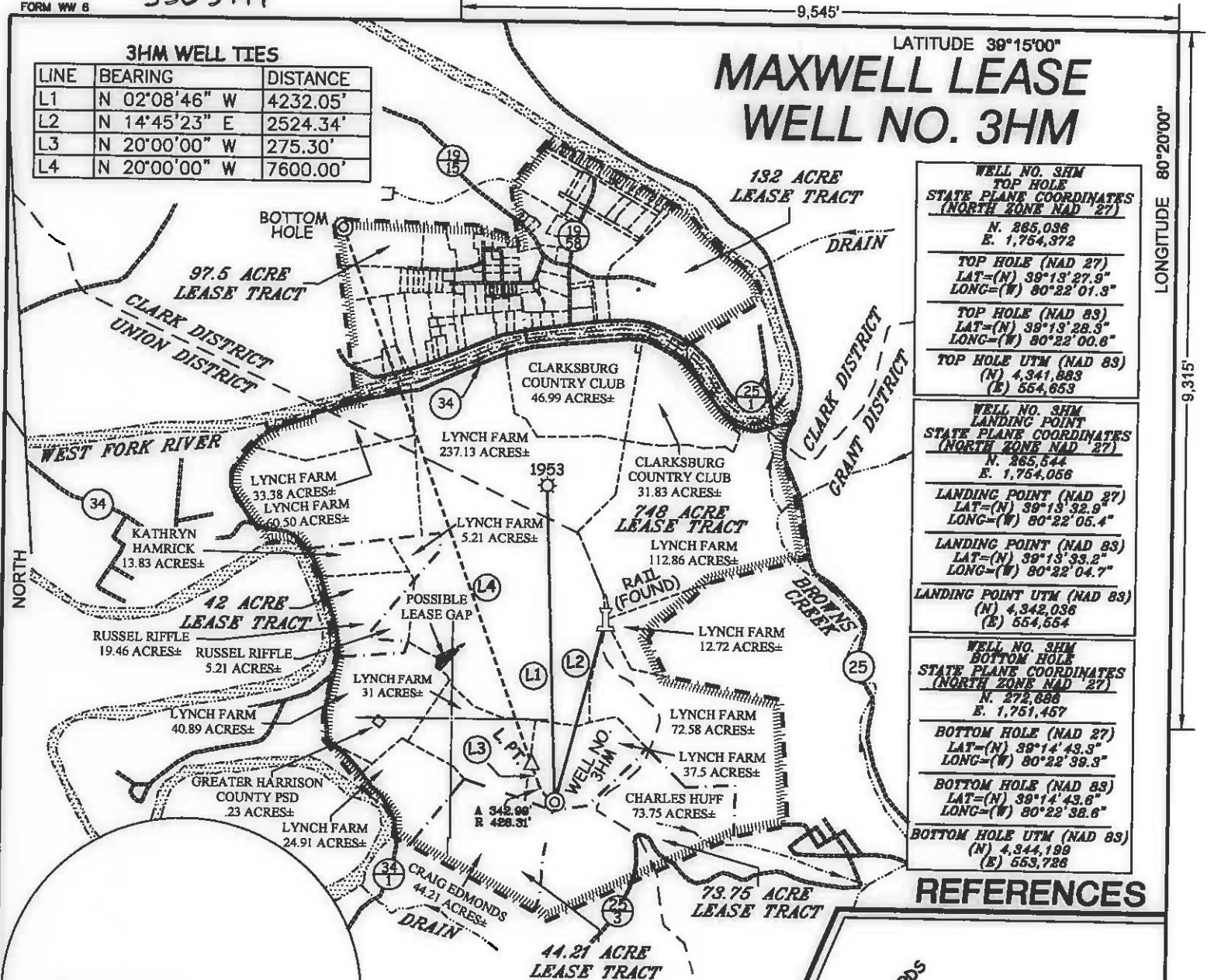


MAXWELL LEASE WELL NO. 3HM

LINE	BEARING	DISTANCE
L1	N 02°08'46" W	4232.05'
L2	N 14°45'23" E	2524.34'
L3	N 20°00'00" W	275.30'
L4	N 20°00'00" W	7600.00'

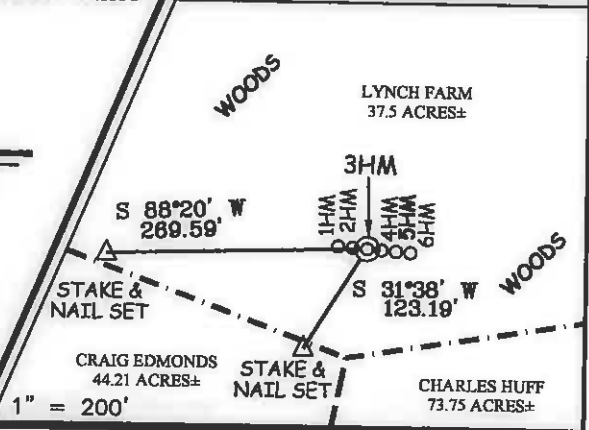


WELL NO. 3HM TOP HOLE STATE PLANE COORDINATES (NORTH ZONE NAD '27) N. 285,036 E. 1,754,372 TOP HOLE (NAD '27) LAT=(N) 39°13'27.9" LONG=(W) 80°22'01.8" TOP HOLE (NAD 83) LAT=(N) 39°13'28.3" LONG=(W) 80°22'00.6" TOP HOLE UTM (NAD 83) (N) 4,341,883 (E) 554,653
WELL NO. 3HM LANDING POINT STATE PLANE COORDINATES (NORTH ZONE NAD '27) N. 285,544 E. 1,754,056 LANDING POINT (NAD '27) LAT=(N) 39°13'32.9" LONG=(W) 80°22'05.4" LANDING POINT (NAD 83) LAT=(N) 39°13'33.2" LONG=(W) 80°22'04.7" LANDING POINT UTM (NAD 83) (N) 4,342,036 (E) 554,554
WELL NO. 3HM BOTTOM HOLE STATE PLANE COORDINATES (NORTH ZONE NAD '27) N. 272,656 E. 1,751,457 BOTTOM HOLE (NAD '27) LAT=(N) 39°14'43.3" LONG=(W) 80°22'39.3" BOTTOM HOLE (NAD 83) LAT=(N) 39°14'43.6" LONG=(W) 80°22'38.6" BOTTOM HOLE UTM (NAD 83) (N) 4,344,199 (E) 553,786

REFERENCES

NOTES ON SURVEY

1. TIES TO WELLS, REFERENCES, AND CORNERS ARE BASED ON GRID NORTH FOR THE WV STATE PLANE COORDINATE SYSTEM NORTH ZONE NAD '27.
2. LEASE BOUNDARY SHOWN HEREON TAKEN FROM DEED BOOK 142 PAGE 484 AND ADJOINING DEEDS.
3. SURFACE OWNER AND ADJOINER INFORMATION TAKEN FROM THE ASSESSOR AND COUNTY CLERK RECORDS OF HARRISON COUNTY IN JULY, 2012.
4. WELL LAT./LONG. (NAD'27) ESTABLISHED BY DGPS(SURVEY GRADE).



I THE UNDERSIGNED, HEREBY CERTIFY THAT THIS PLAT IS CORRECT TO THE BEST OF MY KNOWLEDGE AND BELIEF AND SHOWS ALL THE INFORMATION REQUIRED BY LAW AND THE REGULATIONS ISSUED AND PRESCRIBED BY THE DIVISION OF ENVIRONMENTAL PROTECTION.

P.S. 677 *Gregory A. Smith*



(+) DENOTES LOCATION OF WELL ON UNITED STATES TOPOGRAPHIC MAPS.
 DATE APRIL 3, 20 13
 REVISED DATE APRIL 11, 20 13
 OPERATORS WELL NO. MAXWELL 3HM
 API WELL NO. 47 - 33 - 05741H64
 STATE COUNTY PERMIT

MINIMUM DEGREE OF ACCURACY 1 / 200 FILE NO. 7995P3HMR2(448-13)
 PROVEN SOURCE OF ELEVATION DGPS (SUBMETER MAPPING GRADE) SCALE 1" = 2,000'

STATE OF WEST VIRGINIA
 DIVISION OF ENVIRONMENTAL PROTECTION
 OFFICE OF OIL AND GAS

WELL TYPE: OIL GAS LIQUID INJECTION WASTE DISPOSAL IF "GAS" PRODUCTION STORAGE DEEP SHALLOW

LOCATION: ELEVATION 1,462' WATERSHED WEST FORK RIVER
 DISTRICT UNION COUNTY HARRISON QUADRANGLE MOUNT CLARE 7.5'
 SURFACE OWNER LYNCH FARM, LLC ACREAGE 37.5±
 ROYALTY OWNER WBM HEIRS PROPERTIES, LLC ACREAGE 748, 42, 44.21, 73.75, 97.5, & 132±
 PROPOSED WORK: LEASE NO. _____
 DRILL CONVERT DRILL DEEPER REDRILL FRACTURE OR STIMULATE PLUG OFF OLD
 FORMATION _____ PERFORATE NEW FORMATION _____ PLUG AND ABANDON _____ CLEAN OUT AND REPLUG _____ OTHER _____
 PHYSICAL CHANGE IN WELL (SPECIFY) _____ TARGET FORMATION MARCELLUS
 ESTIMATED DEPTH 7,590' TVD / TMD 15,460'

WELL OPERATOR PDC MOUNTAINEER, LLC DESIGNATED AGENT JAMIE HAGA
 ADDRESS 120 GENESIS BOULEVARD ADDRESS 120 GENESIS BOULEVARD
 BRIDGEPORT, WV 26330 BRIDGEPORT, WV 26330 07/12/2013

**MAXWELL LEASE
WELL NO.'S 1HM - 6HM**

MAXWELL
WELL NO.'S
1HM-6HM

ASSOCIATED
PIT

SEE MAXWELL SITE PLAN FOR
COMPLETE DETAILS OF ACCESS
ROAD, PIT, AND PAD DESIGNS.



Professional Energy Consultants
A DIVISION OF SOUTH LINC SERVICES

SURVEYORS PROJECT MGMT. **SLS** ENGINEERS ENVIRONMENTAL

228 West Main St
P.O. Box 140
Shadyside, OH 43081
(614) 483-5834
1102317 S. LISCOTT, CDM/JT
5585 Delta Station Road
Shadyside, OH 43087
(740) 971-8911

TOPO SECTION OF USGS
MOUNT CLARE 7.5' QUADRANGLE

SCALE: 1"=500'



RAWN BY: C.P.M. FILE NO.: 7995 DATE: 03-28-13 CADD FILE: 7995REC.DWG