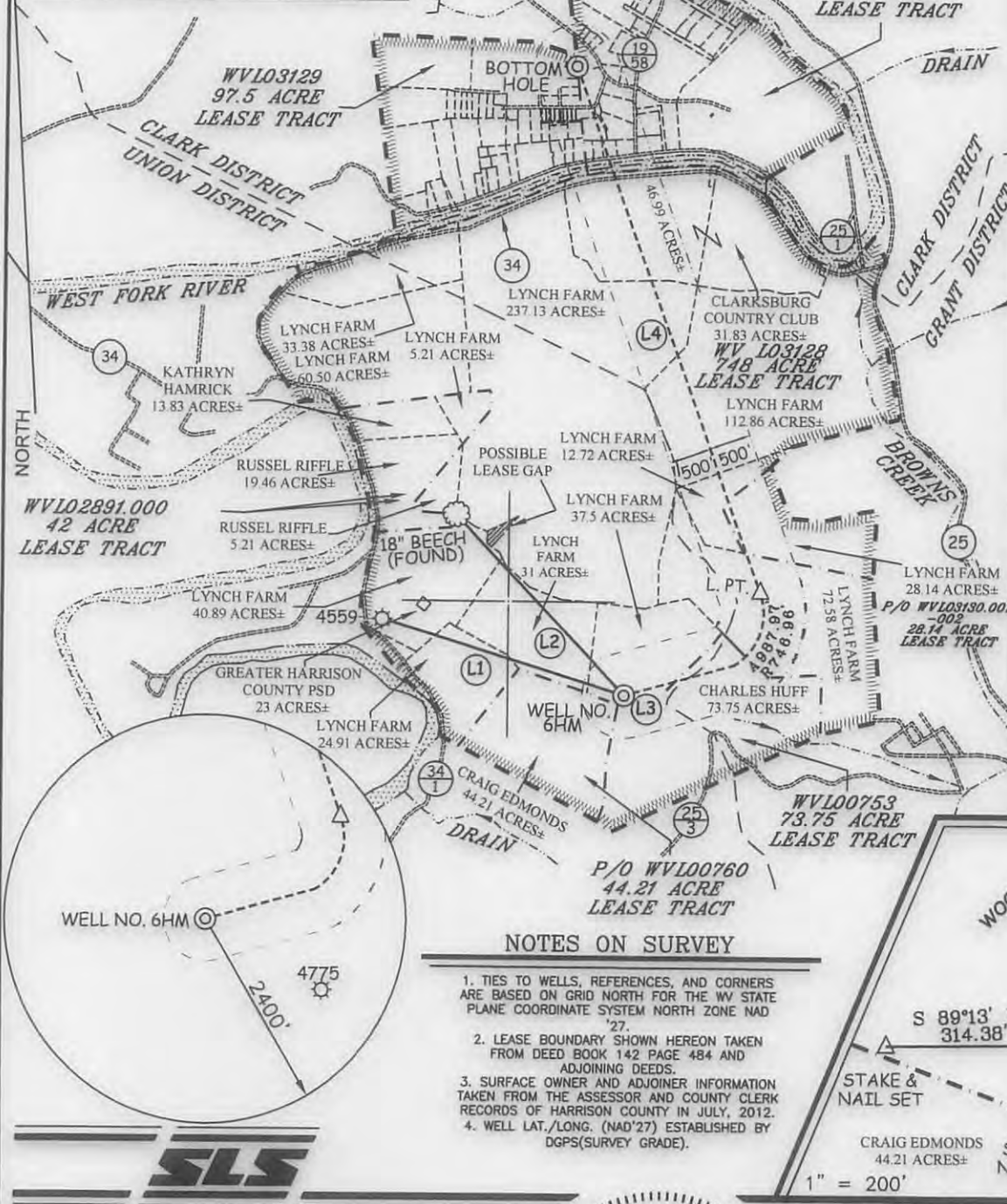


MAXWELL LEASE WELL NO. 6HM

LINE	BEARING	DISTANCE
L1	N 73°04'27" W	3020.20'
L2	N 43°36'08" W	2927.80'
L3	N 74°32'03" E	1360.63'
L4	N 20°00'00" W	6580.00'



WELL NO. 6HM TOP HOLE
STATE PLANE COORDINATES (NORTH ZONE NAD '27)
N. 265,032 E. 1,754,417
TOP HOLE (NAD 27)
LAT=(N) 39°13'27.9" LONG=(W) 80°22'00.7"
TOP HOLE (NAD 83)
LAT=(N) 39°13'28.2" LONG=(W) 80°22'00.0"
TOP HOLE UTM (NAD 83)
(N) 4,341,882 (E) 554,667
WELL NO. 6HM LANDING POINT
STATE PLANE COORDINATES (NORTH ZONE NAD '27)
N. 266,262 E. 1,756,029
LANDING POINT (NAD 27)
LAT=(N) 39°13'40.2" LONG=(W) 80°21'40.4"
LANDING POINT (NAD 83)
LAT=(N) 39°13'40.5" LONG=(W) 80°21'39.7"
LANDING POINT UTM (NAD 83)
(N) 4,342,265 (E) 555,152
WELL NO. 6HM BOTTOM HOLE
STATE PLANE COORDINATES (NORTH ZONE NAD '27)
N. 272,445 E. 1,753,778
BOTTOM HOLE (NAD 27)
LAT=(N) 39°14'41.1" LONG=(W) 80°22'09.7"
BOTTOM HOLE (NAD 83)
LAT=(N) 39°14'41.4" LONG=(W) 80°22'09.1"
BOTTOM HOLE UTM (NAD 83)
(N) 4,344,137 (E) 554,435

REFERENCES

NOTES ON SURVEY

1. TIES TO WELLS, REFERENCES, AND CORNERS ARE BASED ON GRID NORTH FOR THE WV STATE PLANE COORDINATE SYSTEM NORTH ZONE NAD '27.
2. LEASE BOUNDARY SHOWN HEREON TAKEN FROM DEED BOOK 142 PAGE 484 AND ADJOINING DEEDS.
3. SURFACE OWNER AND ADJOINER INFORMATION TAKEN FROM THE ASSESSOR AND COUNTY CLERK RECORDS OF HARRISON COUNTY IN JULY, 2012.
4. WELL LAT./LONG. (NAD'27) ESTABLISHED BY DGPS(SURVEY GRADE).



I THE UNDERSIGNED, HEREBY CERTIFY THAT THIS PLAT IS CORRECT TO THE BEST OF MY KNOWLEDGE AND BELIEF AND SHOWS ALL THE INFORMATION REQUIRED BY LAW AND THE REGULATIONS ISSUED AND PRESCRIBED BY THE DIVISION OF ENVIRONMENTAL PROTECTION.

P.S. 677 *Gregory A. Smith*



(+) DENOTES LOCATION OF WELL ON UNITED STATES TOPOGRAPHIC MAPS.

DATE APRIL 3, 20 13

REVISED DATE SEPTEMBER 3, 20 13

OPERATORS WELL NO. MAXWELL 6HM

API WELL NO. 47 - 33 MOD 05744 H6A

STATE MD COUNTY PERMIT

MINIMUM DEGREE OF ACCURACY 1/200 FILE NO. 7995P6HMR3(448-13)

PROVEN SOURCE OF ELEVATION DGPS (SUBMETER MAPPING GRADE) SCALE 1" = 2,000'

STATE OF WEST VIRGINIA
DIVISION OF ENVIRONMENTAL PROTECTION
OFFICE OF OIL AND GAS

WELL TYPE: OIL GAS LIQUID INJECTION WASTE DISPOSAL IF "GAS" PRODUCTION STORAGE DEEP SHALLOW

LOCATION: ELEVATION 1,462' WATERSHED WEST FORK RIVER

DISTRICT UNION COUNTY HARRISON QUADRANGLE MOUNT CLARE 7.5'

SURFACE OWNER LYNCH FARM, LLC ACREAGE 37.5±

ROYALTY OWNER WBM HEIRS PROPERTIES, LLC ETAL ACREAGE 748, 42, 44.21, 73.75, 97.5, 28.14, & 132±

PROPOSED WORK: DRILL CONVERT DRILL DEEPER REDRILL FRACTURE OR STIMULATE PLUG OFF OLD FORMATION PERFORATE NEW FORMATION PLUG AND ABANDON CLEAN OUT AND REPLUG OTHER

PHYSICAL CHANGE IN WELL (SPECIFY) _____ TARGET FORMATION MARCELLUS

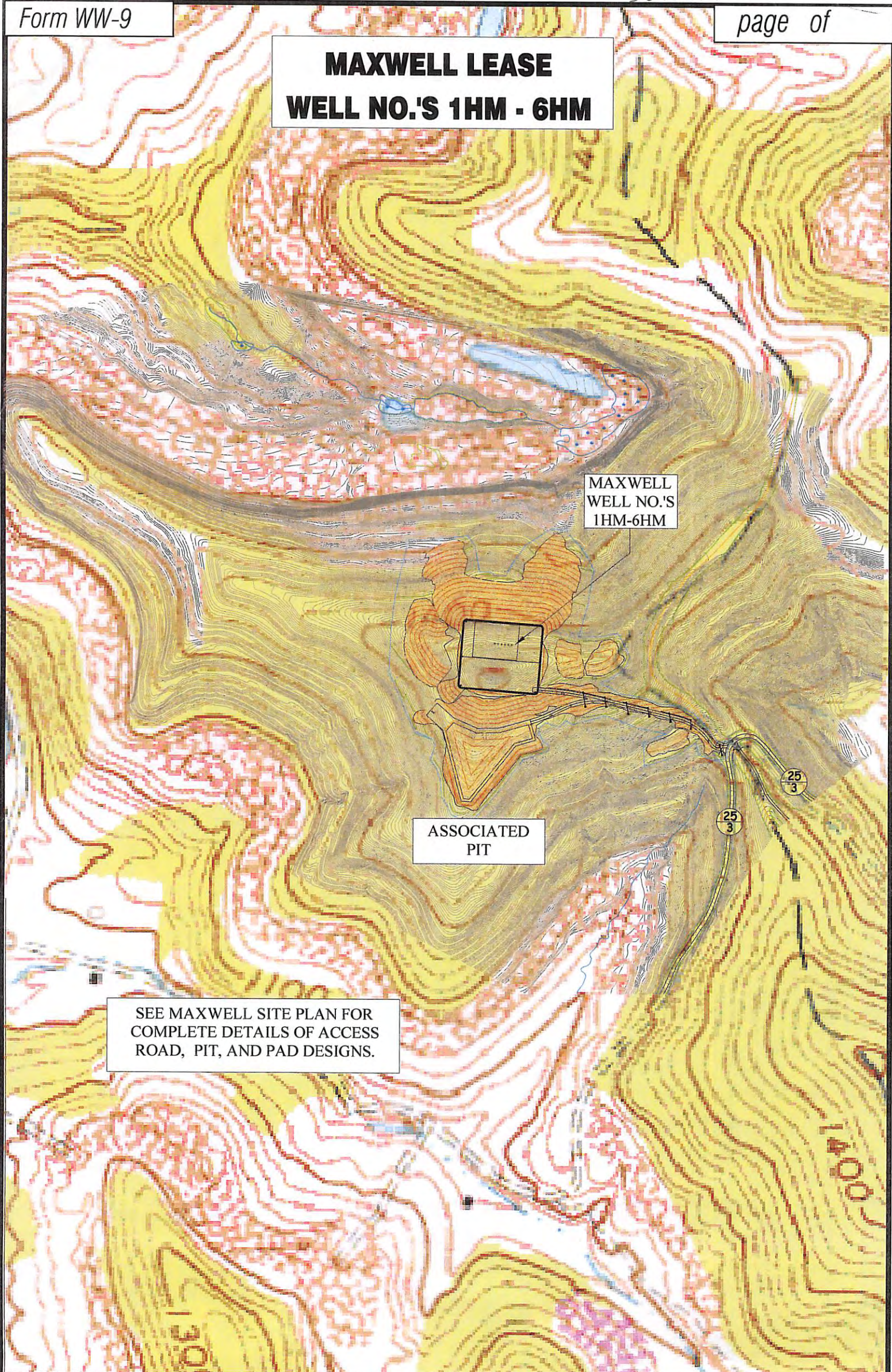
ESTIMATED DEPTH 7,590' TVD / TMD 15,479'

WELL OPERATOR PDC MOUNTAINEER, LLC DESIGNATED AGENT JAMIE HAGA

ADDRESS 120 GENESIS BOULEVARD BRIDGEPORT, WV 26330 ADDRESS 120 GENESIS BOULEVARD BRIDGEPORT, WV 26330

11/08/2013

MAXWELL LEASE WELL NO.'S 1HM - 6HM



MAXWELL
WELL NO.'S
1HM-6HM

ASSOCIATED
PIT

SEE MAXWELL SITE PLAN FOR
COMPLETE DETAILS OF ACCESS
ROAD, PIT, AND PAD DESIGNS.

Professional Energy Consultants
A DIVISION OF SMITH LAND SURVEYING

SURVEYORS **ENGINEERS**
PROJECT MGMT. **ENVIRONMENTAL**

SLS

226 West Main St
P.O. Box 150
Glenville, WV 26351
(304) 462-5634
HONESTY. INTEGRITY. QUALITY

56665 Dille Bottom Road
Shadyside, OH 43047
(740) 671-9911

TOPO SECTION OF USGS
MOUNT CLARE 7.5' QUADRANGLE

SCALE: 1"=500'

0' 500' 1000'

11/08/2013

DRAWN BY C.P.M.	FILE NO. 7995	DATE 03-28-13	CADD FILE: 7995REC.DWG
--------------------	------------------	------------------	---------------------------