

7,896' to Bottom Hole

5,430' to Top Hole

TOP & BOTTOM HOLE LATITUDE 39 - 17 - 30

TOP & BOTTOM HOLE LONGITUDE 80 - 32 - 30

13,893' to Top Hole

3,861' to Bottom Hole

(⊙) Denotes Location of Well on United States Topographic Maps

I, the undersigned, hereby certify that this plat is correct to the best of my knowledge and belief and shows all the information required by law and the rules issued and prescribed by the Department of Environmental Protection.

Kenneth J. Plum, P.S. 2216

Antero Resources Well No. April Unit 2H Antero Resources Corporation

Notes: West Virginia Coordinate System of 1927, North Zone based upon Differential GPS Measurements. Well No. April Unit 2H Top Hole coordinates are N: 276,157.58' Latitude: 39°15'12.06" E: 1,699,752.08' Longitude: 80°33'36.98" Bottom Hole coordinates are N: 286,188.88' Latitude: 39°16'50.92" E: 1,697,285.92' Longitude: 80°34'09.84" UTM Zone 17, NAD 1983 Top Hole Coordinates Bottom Hole Coordinates N: 4,344,993.826m N: 4,348,037.368m E: 537,956.372m E: 537,154.139m Plat orientation and corner and well references are based upon the grid north meridian. Well location references are based upon the magnetic meridian.



Table with 4 columns: Par, Owner, DB/Pg, Acres. It lists parcels for Tax Map 301 and Tax Map 321.

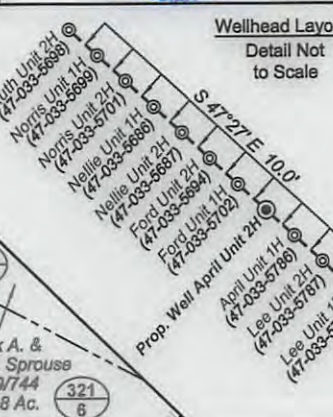
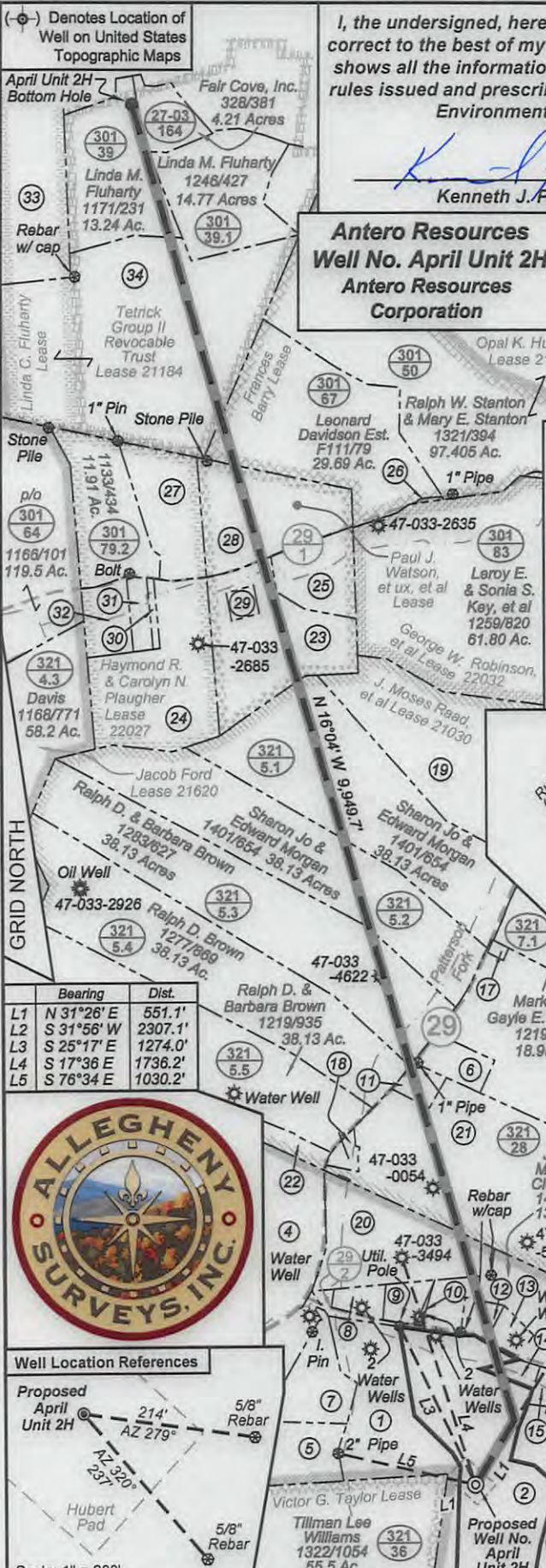
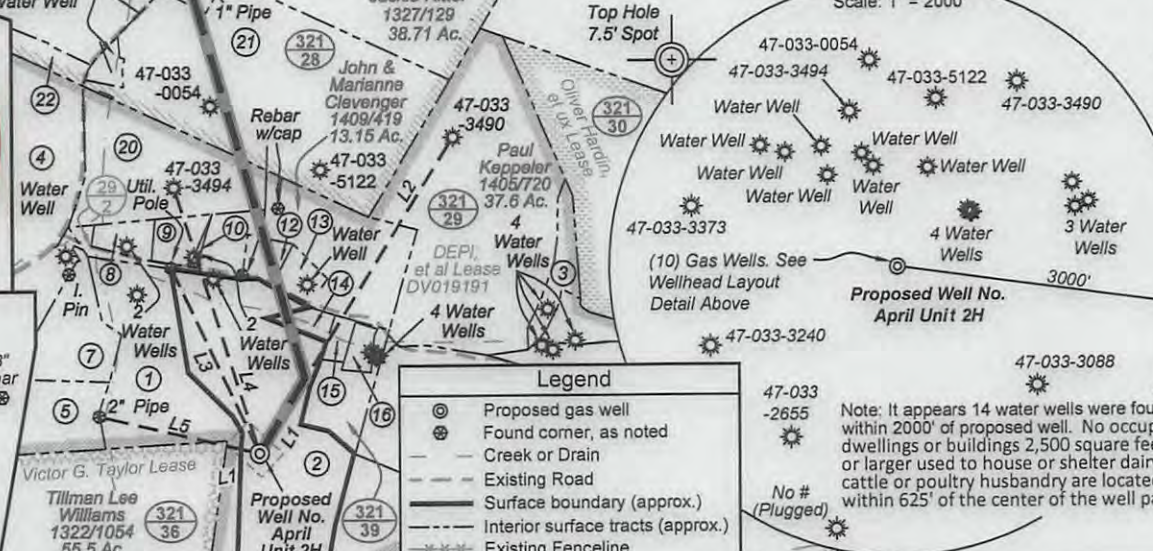
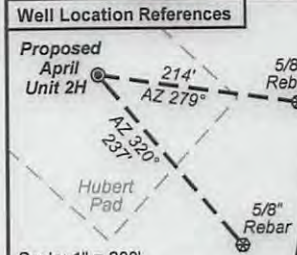


Table with 4 columns: Par, Owner, DB/Pg, Acres. It lists parcels for Tax Map 321.

Table with 3 columns: Bearing, Dist., and a list of bearings and distances (L1 to L5).



Legend table defining symbols for proposed gas well, found corner, creek or drain, existing road, surface boundary, interior surface tracts, and existing fence line.

FILE NO: 10-36-TM-13
DRAWING NO: 10-13 April 2H Well Plat
SCALE: 1" = 1200'
MINIMUM DEGREE OF ACCURACY: Submeter
PROVEN SOURCE OF ELEVATION: WVDOT, Bridgeport, WV

STATE OF WEST VIRGINIA
DEPARTMENT OF ENVIRONMENTAL PROTECTION
OIL AND GAS DIVISION

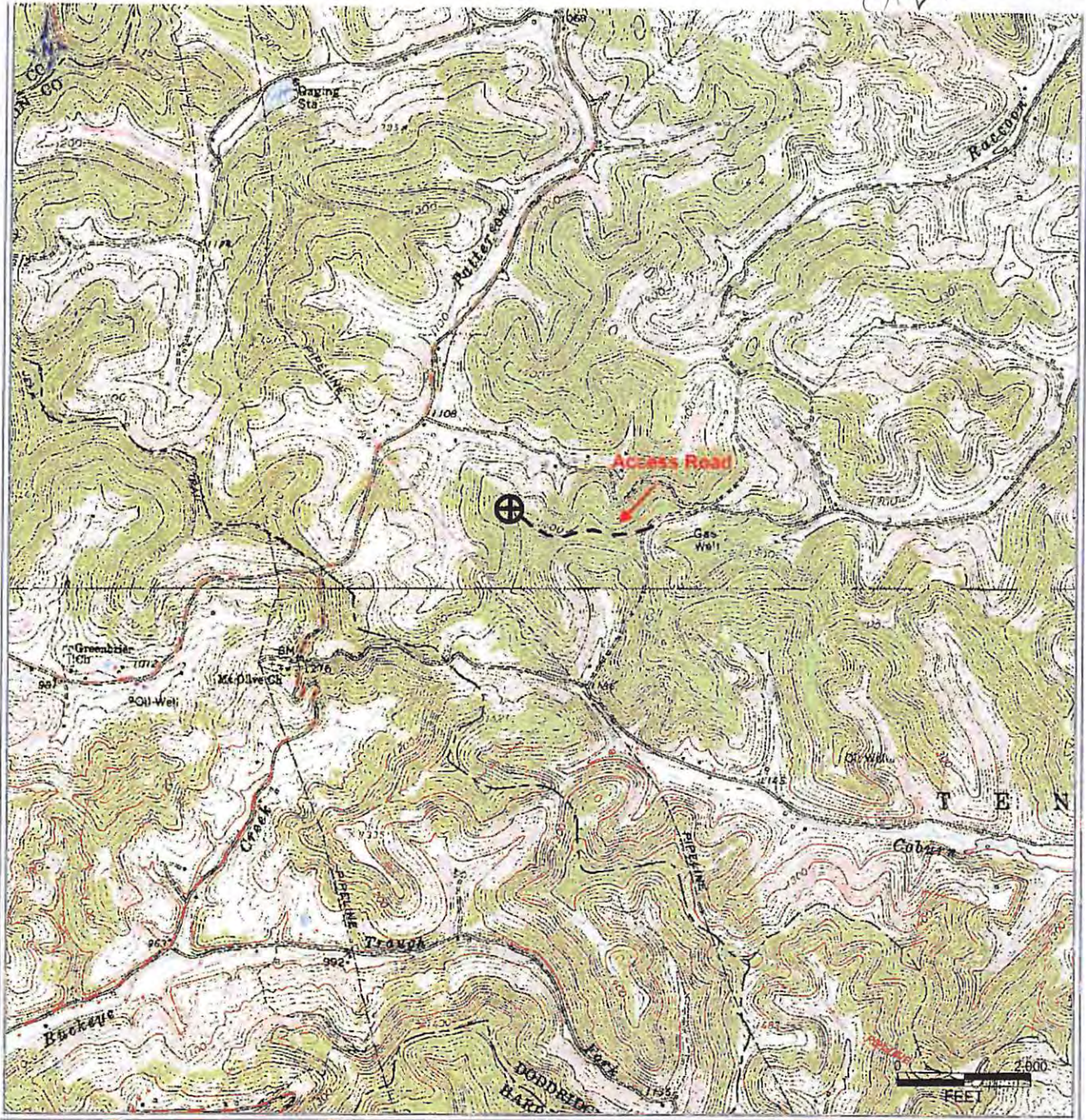
DATE: September 18 2013
OPERATOR'S WELL NO. April Unit 2H
API WELL NO. H6A
47 - 033 - 05792
STATE COUNTY PERMIT

WELL TYPE: [] OIL [X] GAS [] LIQUID INJECTION [] WASTE DISPOSAL
(IF GAS) PRODUCTION: [] STORAGE [] DEEP [X] SHALLOW
LOCATION: ELEVATION: 1376' WATERSHED: Patterson Fork QUADRANGLE: Salem
DISTRICT: Tenmile COUNTY: Harrison
SURFACE OWNER: Hubert Jr. & Lorena Bland Frances Barry ACREAGE: 28.50 108; 70.866
ROYALTY OWNER: DEPI, et al; Tetrick Group II Revocable Trust; J. Moses Raad, et al LEASE NO: 21184 ACREAGE: 283; 447; 40
PROPOSED WORK: [X] DRILL [] CONVERT [] DRILL DEEPER [X] FRACTURE OR STIMULATE [] PLUG OFF OLD FORMATION
[X] PERFORATE NEW FORMATION [] OTHER PHYSICAL CHANGE IN WELL (SPECIFY) 7,600' TVD
[] PLUG AND ABANDON [] CLEAN OUT AND REPLUG TARGET FORMATION: Marcellus Shale ESTIMATED DEPTH: 18,200' MD

WELL OPERATOR: Antero Resources Corporation DESIGNATED AGENT: Dianna Stamper - CT Corporation System
ADDRESS: 1625 17th Street ADDRESS: 5400 D Big Tyler Road
Denver, CO 80202 Charleston, WV 25313

12/06/2013

182 Plat Spotted



PETRA 01/8/2012 4:24:38 PM

SDW
10/13/2013

Received

33 05792

OCT 4 2012

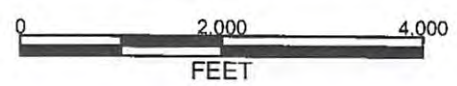
Office of Oil and Gas
WV Dept. of Environmental Protection

Antero Resources Corporation

APPALACHIAN BASIN

April Unit 2H

Doddridge County



REMARKS
 QUADRANGLE: SALEM
 WATERSHED: PATTERSON FORK
 DISTRICT: TENMILE

Date: 9/18/2012