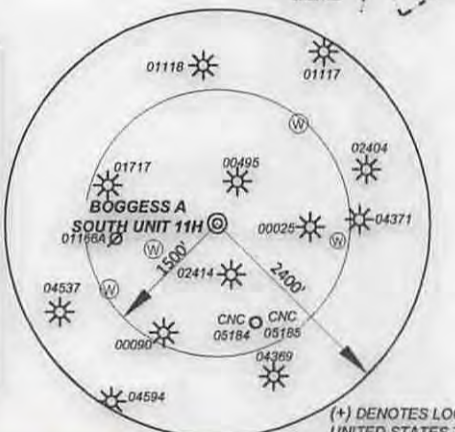
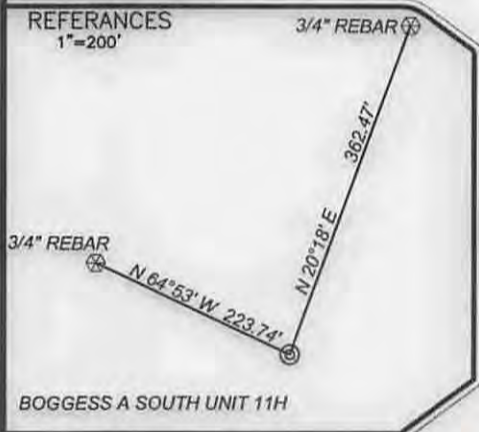
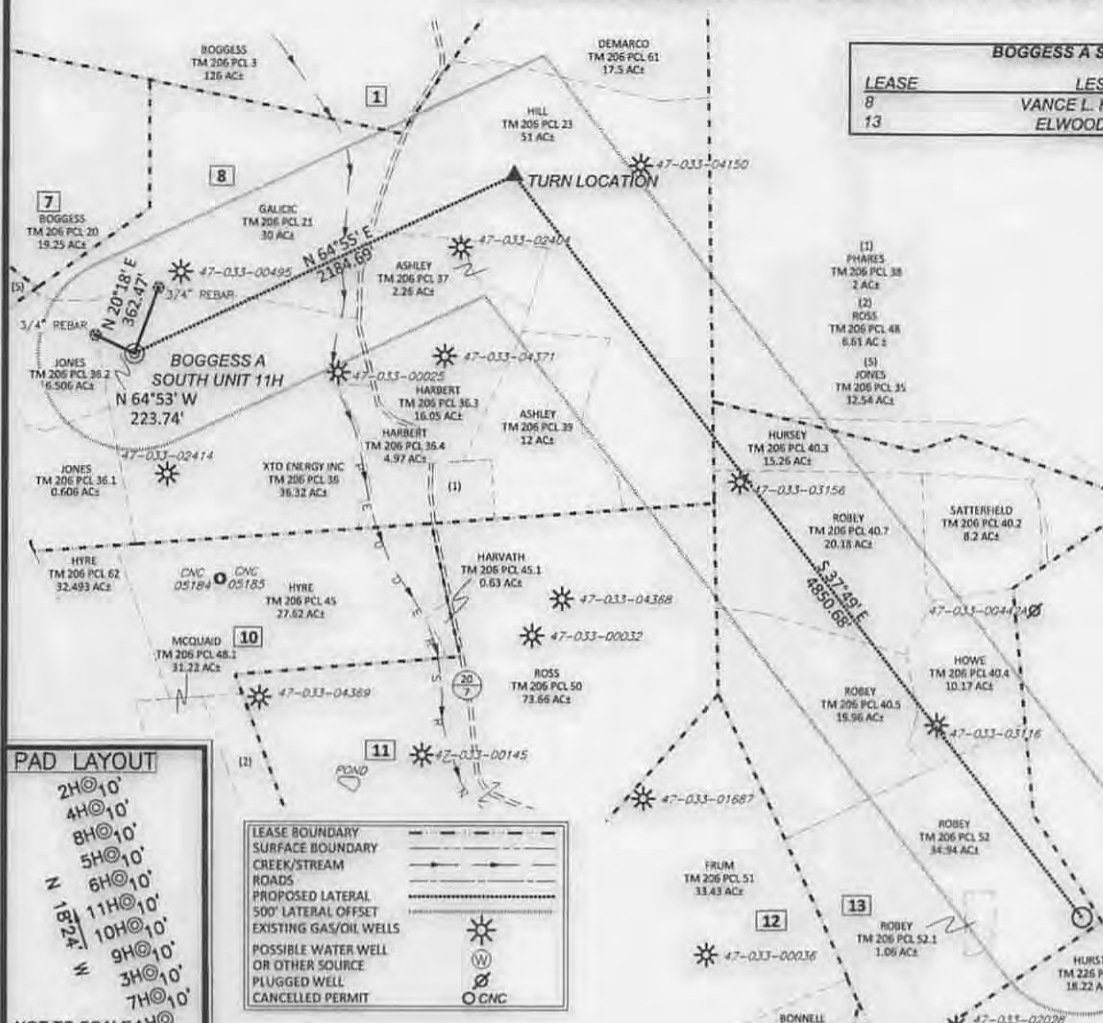


BOGGESS A SOUTH UNIT 11H



99 Cambridge Place Bridgeport, WV 26330
Toll Free 855-488-9539
Fax 304-933-3327



Civil & Environmental Consultants, Inc.

DATE JAN. 26, 2015

SCALE 1" = 1000' ACCURACY 1/2500

OPERATORS WELL No. BOGGESS A SOUTH UNIT 11H

47 - 033 - 05846 HGA
API No.

TYPE OF WELL:

GAS:
Production Storage *Deep *Shallow

PROPOSED WORK ON LOCATION:

Drill Drill Deeper Redrill Convert
Fracture/ Stimulate *Plug off to Formation
Perforate New Formation Plug and Abandon
Clean/ Replug Other Than Above
If "Other" Please see Details below—
DETAILS OF PROPOSED WORK _____

*TARGET FORMATION MARCELLUS

ESTIMATED DEPTH TVD: 7,100', TMD: 12,600'

WELL OPERATOR XTO ENERGY INC.

ADDRESS 810 HOUSTON STREET
FORT WORTH, TEXAS 76102

I, the undersigned, hereby certify that this plat is correct to the best of my knowledge and belief and shows all the information required by law and the rules issued and prescribed by the Division of Environmental Protection.

Richard E. Adams



STATE OF WEST VIRGINIA
DIVISION OF ENVIRONMENTAL PROTECTION
OFFICE OF OIL AND GAS



WELL AREA & LOCATION INFORMATION:

ELEVATION SOURCE GPS (OPUS)

ELEVATION 1183'

WATERSHED REESES RUN DISTRICT EAGLE

COUNTY HARRISON TOPO QUAD WALLACE

SURFACE OWNER XTO ENERGY INC.

ACREAGE 36.32 ±

ROYALTY OWNER VANCE L. HORNOR, G.P. HORNOR, J.H. HORNOR, M.L. HORNOR, V.L. HORNOR INVESTMENT COMPANY, et al

LEASE ACREAGE 294.5 ±

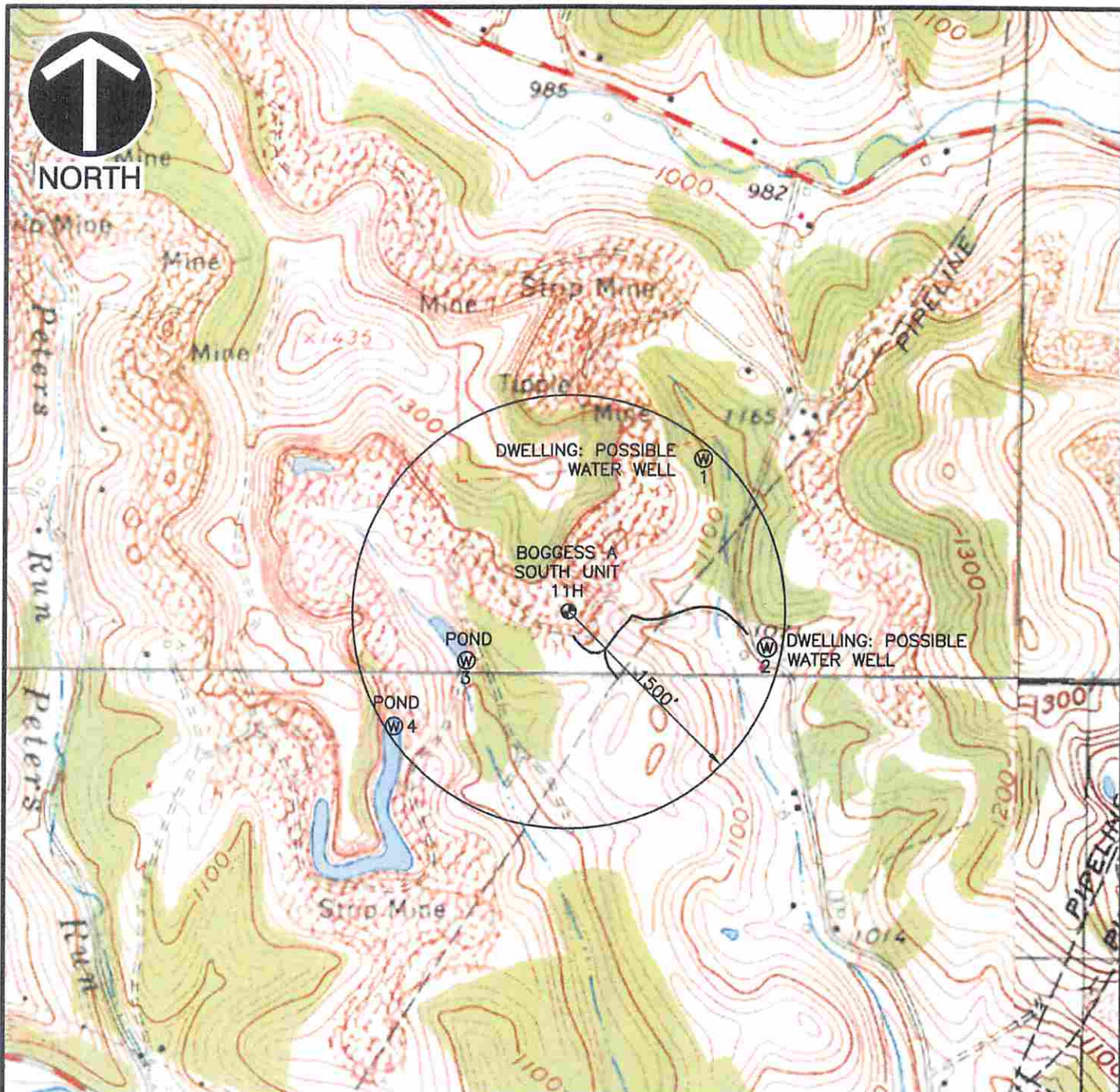
DESIGNATED AGENT GARY BEALL

ADDRESS P.O. BOX 1008
JANE LEW, WV 26385

02/13/2015



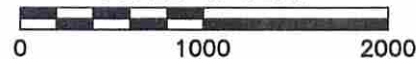
NORTH



REFERENCE

1. TOPOGRAPHIC INFORMATION BASED UPON BOGESS UNIT. SURVEY CONDUCTED BY ADAMS LAND SURVEYING, PLLC IN SEPT. 07, 2012 AND UPDATED BY CIVIL AND ENVIRONMENTAL CONSULTANTS, INC. ON SEPT 03, 2014.
2. U.S.G.S. 7.5' TOPOGRAPHIC MAP, WALLACE QUADRANGLE, WV. DATED: 1960, PHOTOREVISED: 1978

SCALE IN FEET



Civil & Environmental Consultants, Inc.

99 Cambridge Place - Bridgeport, WV 26330
Ph: 304.933.3119 · Fax: 304.933.3327
www.cecinc.com

XTO ENERGY INC.
BOGESS A UNIT
EAGLE DISTRICT
HARRISON COUNTY, WV

WATERSHED: REESE'S RUN, A TRIBUTARY OF
TENMILE CREEK

DRAWN BY:	DAM	CHECKED BY:	REA	APPROVED BY:	DEM	FIGURE NO:
DATE:	SEPT. 3, 2014	DWG SCALE:	1" = 1000'	PROJECT NO:	142-355	Office of Oil & Gas

OCT 06 2014

P:\2014\142-355-CADD\DWG\142355-SRV-WELL PLAT 11H-WATER TOPO.dwg(11H WATER TOPO) LS:(9/4/2014 - dmartinez) - LP: 9/9/2014 1:36 PM