

LATITUDE 39° 17' 30"



0.40  
0.78w

00,02 88 LONGITUDE

7'5 OGIS topo location

7.5' loc \_\_\_\_\_ 15' loc \_\_\_\_\_  
(calc.) \_\_\_\_\_

Company HNG Co. (7614)

Farm Francis Helms

Quad Clarksburg 7 1/2

County Harrison

District Coal

WELL LOCATION MAP

File No. 033-30245

Gregory Run

245-H

Coal District, Harrison County, W. Va.

Hope Natural Gas Co., 445 W. Main St., Clarksburg, W. Va.

On Lots.

Elevation, 954' L.

8 $\frac{1}{4}$ " casing, 890'; 6-5/8", 1313'; 3", 2294'.

Starts below coal (Pittsburgh).

Abandonment reported to Dept. of Mines April 22, 1935.

No record of shot.

Fresh water at 195'; salt water at 625, 740, 750'.

Gas well. Exhausted to extent that it is no longer commercially productive.

Packer on 3" tubing set at 2067'.

	Top.	Bottom.
Sand	80	100
(Water, 195')		
Little Dunkard Sand	255	277
Big Dunkard Sand	410	435
Gas Sand	485	520
First Salt Sand (water, 625')	625	645
Second Salt Sand	660	690
Third Salt Sand	695	725
Sand (water, 740-750')	732	855
Maxton Sand	1064	1159
Little Lime	1220	1240
Pencil Cave	1240	1255
Big Lime	1255	1315
Big Injun Sand	1315	1405
50-Ft. Sand (gas, 1834-1838')	1827	1877
30-Ft. Sand	1880	1915
Gordon Stray Sand	1920	1954
Gordon Sand	2061	2075
Fifth Sand (gas, 2252-2256, 2271-2273, and 2277-2282')	2252	2284
Total depth		2294

**HOPE NATURAL GAS CO.**

Clarksburg, W. Va., on the

**FRANCIS HEIRS**

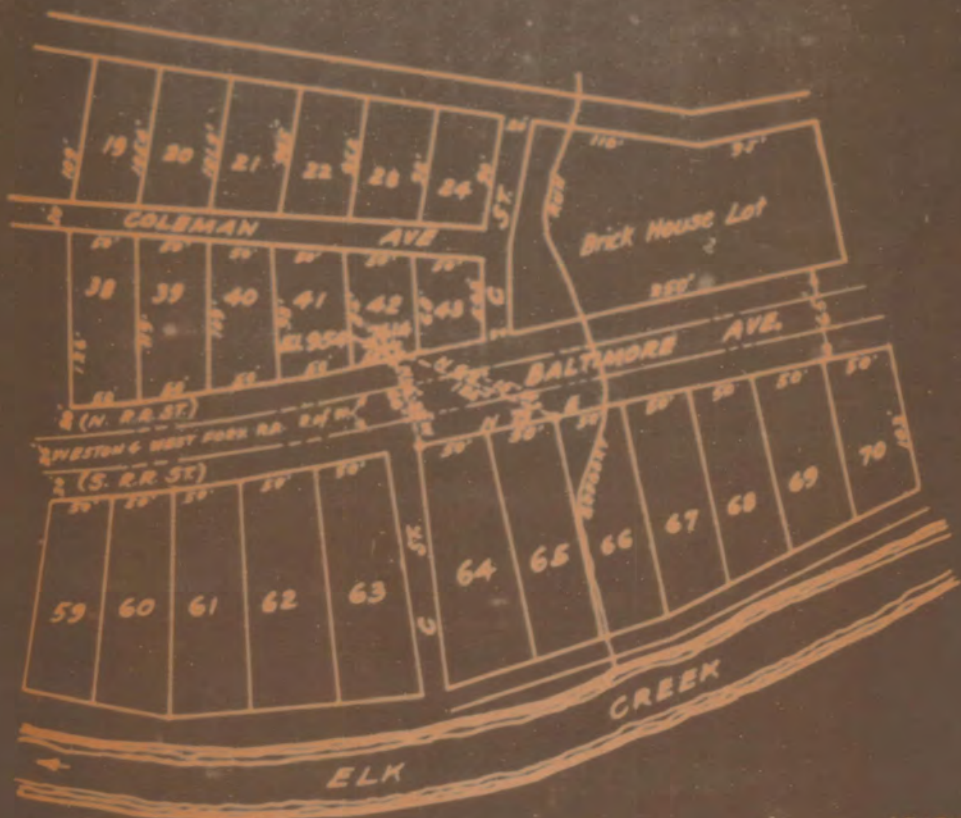
Farm consisting of **2.673** Acres

**COAL**

District

**HARRISON**

County, W. Va.



*A. W. Prichards Orchard Addn  
To North View Addn  
To Clarksburg, W. Va.  
Scale 1" = 100'  
Plot in D.B. 146 R427*

**LEGEND**

- Location
- Oil Well
- ⊙ Alland
- ★ Gas Well
- ⊙ Alland
- ⊕ Dep. Hole

Field Book No. **587 P 6**

Scale **1" = 100'**

Mar. 7, 1935

*HAIR - 295-A*

**ENGINEER'S CERTIFICATE**