

HOMER SMITH NO. 4790 WELL.

NOT LOCATED

No. 229 O.F. (Harr.)

Hay - 263-A

Sardis District, Harrison County, W. Va.

Israel H. Beren, Marietta, Ohio.

On 36 acres, surface owned by Homer Smith, Wallace, W. Va.

Oil and gas under lease to Philadelphia Oil Co.

Well completed Feb. 28, 1921.

Elevation, 1065'.

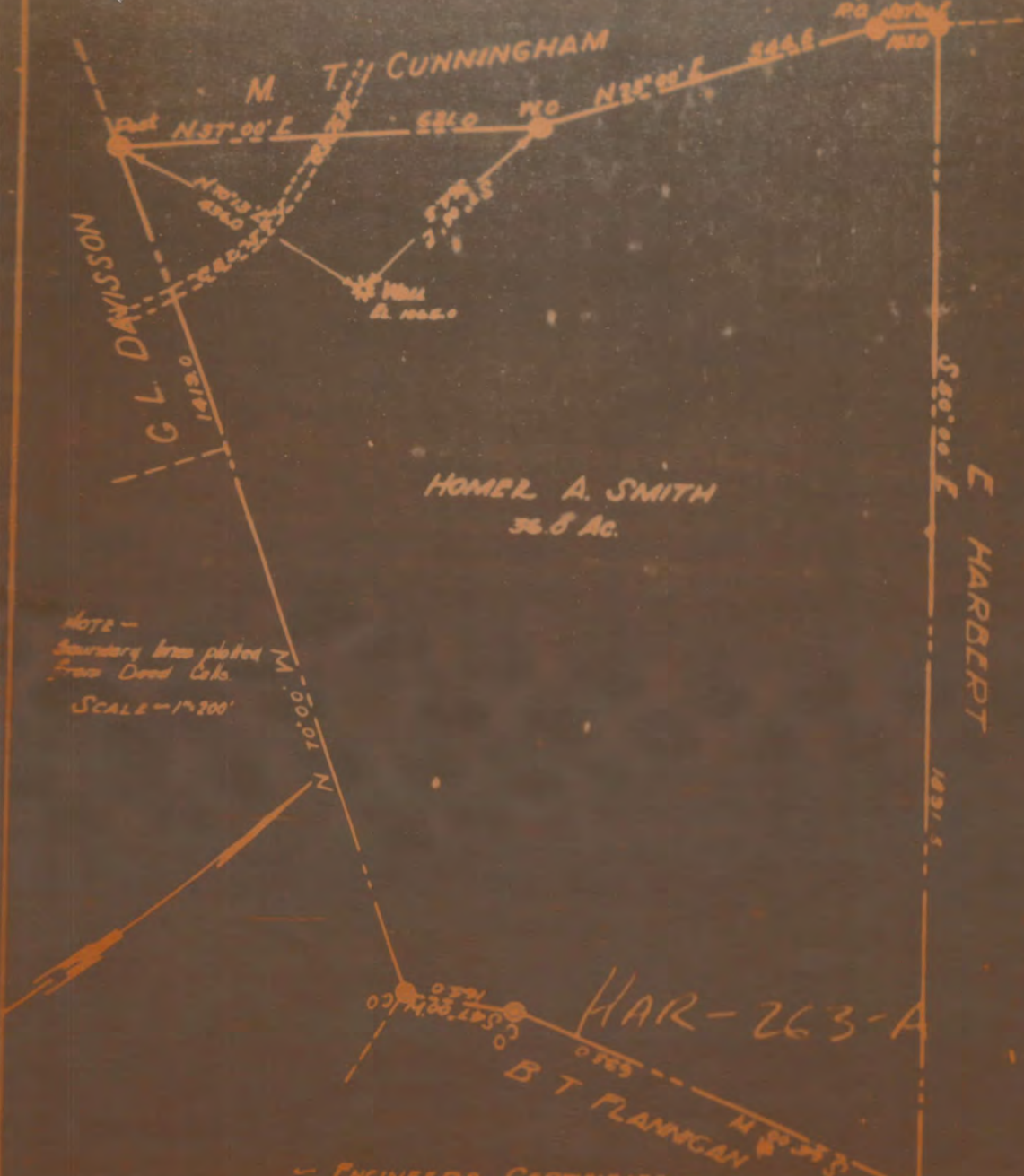
10" casing, 290'; 8", 1205'; 6-5/8", 2024'; 5-3/16", 2800'.

Coal was encountered at 250-252, 770-777'.

Abandonment reported to Dept. of Mines July 25, 1935.

	Top.	Bottom.
Soil	0	16
Red rock	16	35
Lime and slate (water, 50')	35	80
Red rock	80	95
Lime and slate	95	250
Coal	250	252
Lime and slate	252	425
Red rock	425	443
Lime and slate	443	483
Red rock	483	503
Lime and slate	503	770
Pittsburgh Coal	770	777
Lime and slate	777	1310
Little Dunkard Sand	1310	1334
Lime	1334	1460
Big Dunkard Sand	1460	1490
Slate	1490	1510
Gas Sand	1510	1570
Lime shells	1570	1630
1st Salt Sand	1630	1740
Lime	1740	1820
2nd Salt Sand	1820	1905
Slate, lime, shells	1905	1940
Lime	1940	1948
Pink rock	1948	1955
Slate	1955	1985
Little Lime	1985	2013
Pencil Cave	2013	2016
Big Lime	2016	2061
Big Injun Sand	2061	2153
Slate	2153	2160
Lime	2160	2213
Slate and shells	2213	2245
Lime	2245	2360
Slate and shells	2360	2512
Sand	2512	2532
Slate, lime shells	2532	2610
Sand (oil and gas, 2630')	2610	2650
Slate and shells	2650	2710
Gordon Stray Sand	2710	2745
Slate and shells	2745	2791
Red rock	2791	2796
Gordon Sand	2796	2827
Slate	2847	2840
4th Sand (show oil, 2856, 2870')	2840	2863
Total depth		2880

BEPEN, formerly Pittsburgh; W Va Gas Co Well No 1001 of Marietta Ohio, on the Homer Smith tract, consisting of 36 Ac and located in Sardis District, Harrison County, W Va



NOTE -  
Boundary lines plotted  
from Deed Cols.

SCALE - 1" = 200'

HAR-263-A

ENGINEER'S CERTIFICATE

I the undersigned hereby certify that this map is correct and shows all the information to the best of my knowledge and belief required by the oil and gas section of the Mining Laws of West Virginia

ROBERT BRIDGES, ENGINEER