

LATITUDE 39° 15' 00"



0.52R
1.10W

LONGITUDE 80° 22' 30"

7'5 OGIS topo location

7.5' loc _____ 15' loc _____
(calc.) _____

Company Reserve Gas Co (371)

Farm Lee Maxwell

Quad West Milford 7'12

County Harrison

District Union

WELL LOCATION MAP

File No. 033-30275

LEE MAXWELL NO. 371 WELL.

No. 240 O.F.(Harr.)

Union District, Harrison County, W. Va. 275-1A
Reserve Gas Co., 445 W. Main St., Clarksburg, W. Va.
On 530 acres, surface and mineral rights owned by Lee Maxwell
Heirs, Clarksburg, W. Va.

Elevation, 1103' L.

6-5/8" casing, 1434'.

Starts below coal (Pittsburgh).

Abandonment reported to Dept. of Mines Sept. 27, 1935.

Well was not shot.

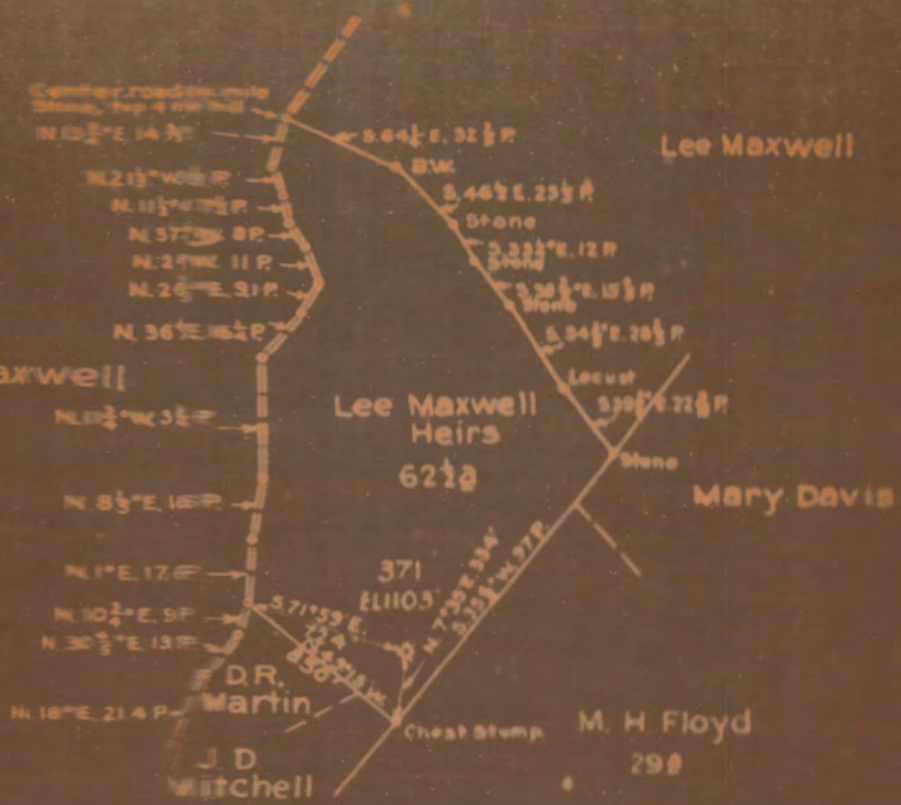
No water recorded.

	Top.	Bottom.
Big Dunkard Sand	440	- 470
Gas Sand	555	- 610
First Salt Sand	770	- 835
Second Salt Sand	870	- 940
Maxton Sand	1075	- 1100
Little Lime	1325	- 1345
Pencil Cave	1345	- 1360
Big Lime	1360	- 1420
Big Injun Sand	1420	- 1525
Squaw Sand	1570	- 1600
50-Ft. Sand (gas, 1946')	1945	- 1965
30-Ft. Sand (gas, 1992')	1987	- 2002
Total depth		3056
Filled and plugged to		2010

Well No. 375
 Reeve Gas Company
 Lee Maxwell II
 Union

of the
 Clayburg, W. Va., on the
 Farm consisting of 530 Acres
 County, W. Va.

District Harrison



HAR-275 A

ENGINEERS CERTIFICATE

LEGEND
 Location
 Oil Well
 Spring
 Gas Well
 Aerial
 Dry Well
 Form Book N-601 P.1520
 Scale 1" = 40 Poles
 9-25 1935

I, the undersigned, hereby certify that this map is correct and shows all the information to be hereon set