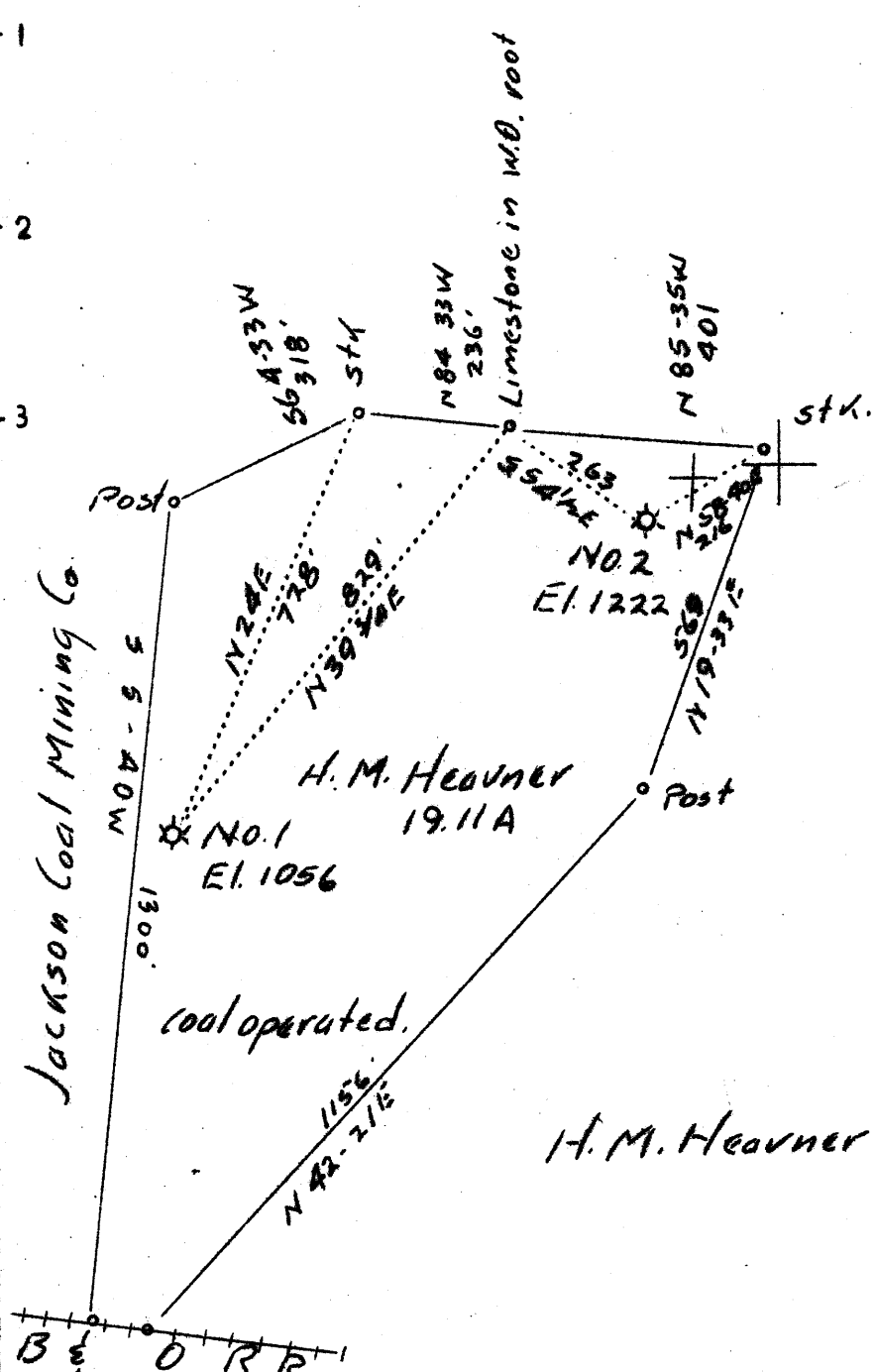


LATITUDE 39° 20'

LONGITUDE 80° 15'



#1	3.92W	3.43S
	9.48 Q	3.85W
#2	3.47 W	3.36S
	3.4 Q	3.42W

Abandonments

Company	Raad and Moscos	3178
Address	Salem, W.Va.	
Farm	H.M. Heavner	
Tract	Acres 19.11	Lease No.
Well (Farm) No.	1 & 2	Serial No.
Elevation (Spirit Level)	1056' & 1222'	
Quadrangle	Clarksburg	(52)
County	Harrison	District Coal
Engineer	C.C. Fittro, C.E.	
Engineer's Registration No.	818	
File No. XYZ	Drawing No. 83 & 84	
Date	Aug. 14, 1937	Scale 1"-300'

STATE OF WEST VIRGINIA
 Department of Mines
 OIL AND GAS DIVISION
 CHARLESTON

WELL LOCATION MAP

File No. HAR-397A & 398A

+ Denotes location of well on United States Topographic Maps, scale 1 to 62,500, latitude and longitude lines being represented by border lines as shown.

— Denotes one inch spaces on border line of original tracing.

RECEIVED
AUG 30 1937
WISCONSIN
BIOLOGICAL SURVEY