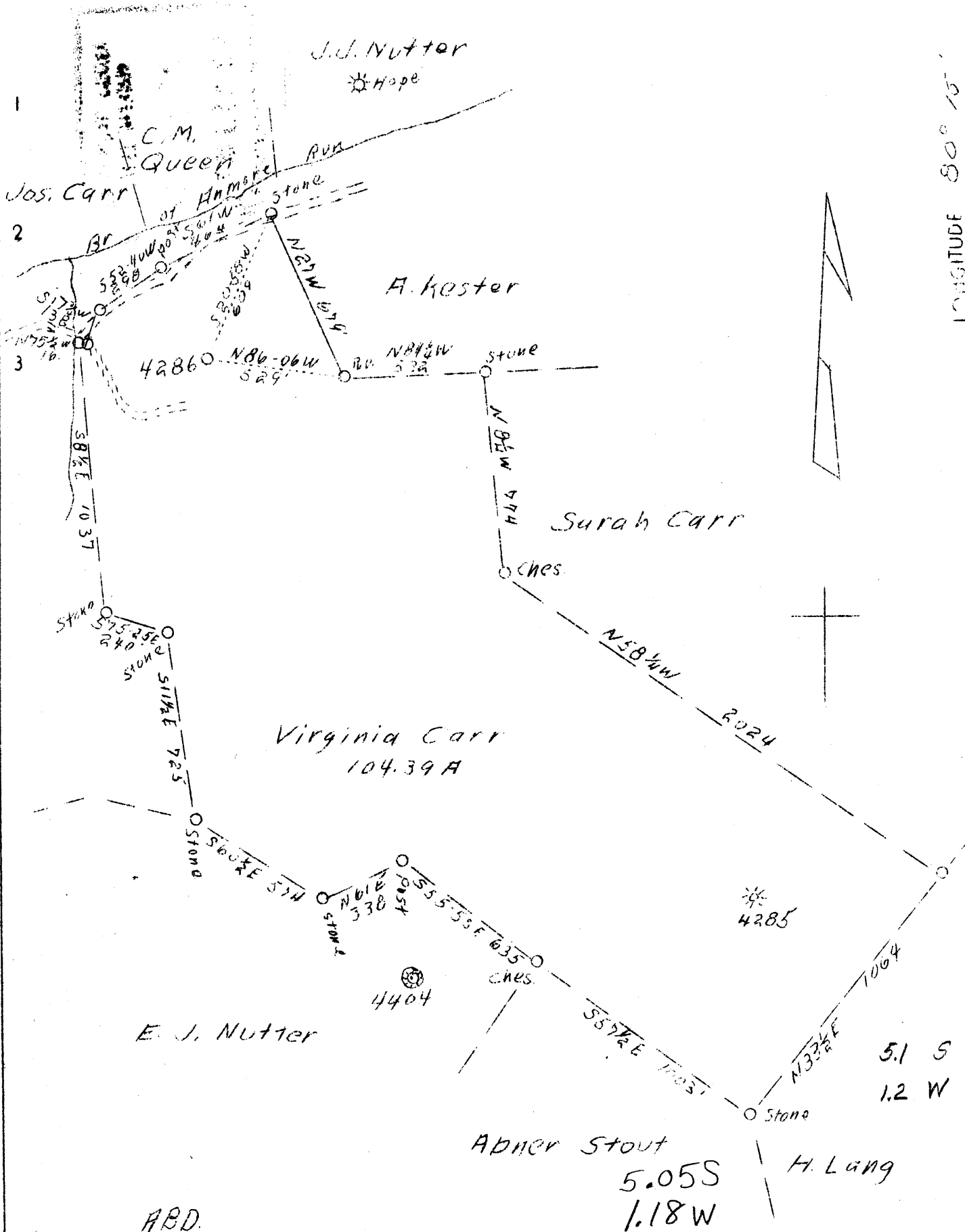


LATITUDE 39° 20'

LONGITUDE 80° 15'



Company Pittsburgh & W.Va. Gas Co. 1352
 Address 608 Union Bank, Clarksburg, W.Va.
 Farm John M. Carr
 Tract Acres 104.39 Lease No. 13579
 Well (Farm) No. 2 Serial No. 4286
 Elevation (Spirit Level) 1132
 Quadrangle Clarksburg SE.
 County Harrison District Simpson
 Engineer James D. Jeffries
 Engineer's Registration No. _____
 File No. _____ Drawing No. _____
 Date 5-12-38 Scale 1"-500'

STATE OF WEST VIRGINIA
 Department of Mines
 OIL AND GAS DIVISION
 CHARLESTON

WELL LOCATION MAP
 File No. Har-434-A

Denotes location of well on United States Topographic Maps, scale 1 to 62,500, latitude and longitude lines being represented by border lines as shown.

Denotes one inch spaces on border line of original tracing.

RECEIVED

MAY 23 1938

NEW YORK
GEOLOGICAL SURVEY

Simpson District, Harrison County, W. Va.
 By Pittsburgh & W. Va. Gas Co., Clarksburg, W. Va.
 On 104 acres; Clarksburg S/W 4-4 Quadrangle.

434A

Elevation.....

Minerals owned by Virginia E. Garr, Clarksburg, W. Va.

Drilling commenced June 16, 1914; completed, July 20, 1914.

Shot July 23, 1914, in 5th Sand.

Salt water at 640 and 715'.

13" wood conductor, 15"; 10" casing, 277' (pulled); 8 $\frac{1}{2}$ ", 1007' (pulled);
 6 $\frac{3}{8}$ ", 1324'; 5 $\frac{1}{8}$ ", 2215'.

Gas well. Abandonment reported to Dept. of Mines April 25, 1938.

Record to RGT from Mrs. Griffith May 27, 1938.

| | Top. | Bottom. |
|--|------|---------|
| Clay | 0 | 150 |
| Little Dunkard Sand, light, hard | 150 | 195 |
| Slate, light, hard | 195 | 250 |
| Big Dunkard Sand, light, hard | 250 | 270 |
| Slate, white, soft | 270 | 300 |
| Sand, light, hard | 300 | 320 |
| Slate, white, soft | 320 | 440 |
| Gas Sand, white, hard | 440 | 460 |
| Slate, dark, soft | 460 | 510 |
| 1st Salt Sand, white, hard | 510 | 565 |
| Slate, light, soft | 565 | 625 |
| 2nd Salt Sand, white, hard (water at 640' and 715') | 625 | 800 |
| Slate and shell | 800 | 1070 |
| Sand, white, hard | 1070 | 1100 |
| Red rock and slate, soft | 1100 | 1205 |
| Little Lime, white, hard | 1205 | 1215 |
| Slate, white, soft | 1215 | 1260 |
| Big Lime, white, hard | 1260 | 1323 |
| Big Injun Sand, white, hard | 1323 | 1428 |
| Red rock, soft | 1428 | 1448 |
| Slate and shells, soft | 1448 | 1765 |
| Fifty-foot Sand, white, hard | 1765 | 1810 |
| Slate, white, soft | 1810 | 1820 |
| Thirty-foot Sand, white, hard | 1820 | 1920 |
| Red rock and shells, hard and soft | 1920 | 2200 |
| Gordon Sand, white, hard | 2200 | 2213 |
| Slate, white, soft | 2213 | 2272 |
| Fifth Sand, gray, hard (gas, 2291') | 2272 | 2305 |
| Slate, white, soft | 2305 | 2374 |
| Bayard Sand, hard | 2374 | 2380 |
| Slate, white, soft | 2380 | 2497 |
| Total depth | | 2497 |

WEST VIRGINIA DEPARTMENT OF MINES
OIL AND GAS DIVISION

WELL RECORD

Permit No. HAR-434-A

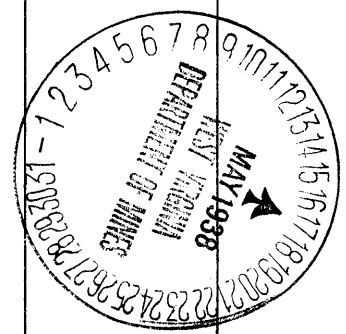
Oil or Gas Well Gas
(Kind)

Company Pittsburgh & West Va Gas Company.
 Address Clarksburg, West Va.
 Farm J. M. Carr Acres 104
 Location (waters) Clarksburg S/W. 4-4
 Well No. 4286 Elev. _____
 District Simpson County Harrison
 The surface of tract is owned in fee by _____
 Address _____
 Mineral rights are owned by Virginia E. Carr
 Address Clarksburg, W. Va.
 Drilling commenced June 16th, 1914
 Drilling completed July 20th, 1914
 Date shot 7-23-1914 Depth of shot 5th. Sand.
 Open Flow /10ths Water in _____ Inch
 /10ths Merc. in _____ Inch
 Volume _____ Cu. Ft.
 Rock Pressure _____ lbs. _____ hrs.
 Oil _____ bbls., 1st 24 hrs.
 Fresh water _____ feet _____ feet
 Salt water 640- 715 feet _____ feet

| Casing and Tubing | Used in Drilling | Left in Well | Packers |
|-------------------|------------------|-----------------|----------------|
| Size | | | Kind of Packer |
| 16. wood | 15 | 15 | |
| 13. | 277 | 277 | Size of |
| 10. | 1007 | 1007 | |
| 8 1/4. | 1324 | 1324 | Depth set |
| 6 5/8. | 2215 | 2215 | |
| 5 3/16. | | | Perf. top |
| 3. | | | Perf. bottom |
| 2. | | | Perf. top |
| Liners Used | | | Perf. bottom |

CASING CEMENTED _____ SIZE _____ No. FT. _____ Date _____
 COAL WAS ENCOUNTERED AT _____ FEET _____ INCHES
 _____ FEET _____ INCHES FEET _____ INCHES
 _____ FEET _____ INCHES FEET _____ INCHES

| Formation | Color | Hard or Soft | Top | Bottom | Oil Gas or Water | Depth Found | Remarks |
|-----------------|-------|--------------|------|--------|------------------|-------------|---------|
| Clay | | | 0 | 150 | | | |
| L. Dunkard | Light | Hard | 150 | 195 | | | |
| Slate | " | " | 195 | 250 | | | |
| Big Dunkard | " | " | 250 | 270 | | | |
| Slate | White | Soft | 270 | 300 | | | |
| Sand | Light | Hard | 300 | 320 | | | |
| Slate | White | Soft | 320 | 440 | | | |
| Gas Sand | " | Hard | 440 | 460 | | | |
| Slate | Dark | Soft | 460 | 510 | | | |
| 1st. Salt | White | Hard | 510 | 565 | | | |
| Slate | Light | Soft | 565 | 625 | | | |
| 2nd. Salt | White | Hard | 625 | 800 | Water | 640' | |
| Slate&Shell | | | 800 | 1070 | " | 715' | |
| Sand | White | Hard | 1070 | 1100 | | | |
| Red Rock&Slate | | Soft | 1100 | 1205 | | | |
| Little Lime | White | Hard | 1205 | 1215 | | | |
| Slate | " | Soft | 1215 | 1260 | | | |
| Big Lime | " | Hard | 1260 | 1323 | | | |
| Big Injun | " | " | 1323 | 1428 | | | |
| Red Rock | Red | Soft | 1428 | 1448 | | | |
| Slate&Shells | | " | 1448 | 1765 | | | |
| Fifty Foot | White | Hard | 1765 | 1810 | | | |
| Slate | " | Soft | 1810 | 1820 | | | |
| Thirty Foot | " | Hard | 1820 | 1920 | | | |
| Red Rock&Shells | | Hard&Soft | 1920 | 2200 | | | |
| Gordon Sand | White | Hard | 2200 | 2213 | | | |
| Slate | " | Soft | 2213 | 2272 | | | |
| Fifth Sand | Gray | Hard | 2272 | 2305 | Gas | 2291' | |
| Slate | White | Soft | 2305 | 2374 | | | |
| Bayard Sand | | Hard | 2374 | 2380 | | | |
| Slate | White | Soft | 2380 | 2497 | | | |
| Total Depth | | | | 2497 | | | |



| Formation | Color | Hard or Soft | Top | Bottom | Oil, Gas or Water | Depth Found | Remarks |
|-----------|-------|--------------|-----|--------|-------------------|-------------|---------|
| | | | | | | | |

Date..... **April 25th, 1938**, 19.....

APPROVED..... **PITTSBURGH & WEST VA GAS CO.** Owner

By..... *F. E. Bristol*
 (Title) *m*

Record of Well No. 4286 Located on Lee M. Carr Farm April 18 1914
Simpson District Narrison County West Va State
 Division F. District No. 14 Drilled under well Order 847
 Rig built by John Craig Began May 30 1914 Completed June 4 1914
 Well drilled by Mark Hartness Began June 12 1914 Completed July 20 1914
 Depth of Well 2497 feet Size of Hole 6 5/8 Producing Gas

CASED WITH

REMARKS

Elev. 1132 G.L.

| AMOUNT | SIZE | KIND | REMARKS |
|------------------|---------|------|--------------------------|
| 16' | 16" | Wood | |
| 299' | 10" | Teal | Reclaimed July 31 - 1914 |
| 1007' | 8 1/2" | " | " " " |
| 1324' | 6 5/8" | " | |
| 2215' | 5 3/16" | " | 1-5 3/16 Steel Pipe |

COAL VEINS

FORMATIONS

| FORMATION | COLOR | OPEN OR CLOSE HARD OR SOFT | TOP | BOTTOM | REMARKS GAS-OIL-WATER (THICKNESS OF PAY) |
|---------------------------|-------|----------------------------|------|--------|--|
| Little Sandstone | | | 150 | 195 | |
| " | | | 250 | 270 | |
| Thin Sand | | | 440 | 460 | |
| W. Salt Sand | | | 570 | 565 | Water 915 - 50' bed |
| and " | | | 625 | 800 | |
| Big Lime | | | 1260 | 1223 | |
| Big Limestone | | | 1323 | | |
| Green | | | 1360 | 1378 | |
| Big Limestone | | | | 1428 | |
| Soft Sand | | | 1765 | 1810 | |
| 30 ft " | | | 1820 | 1920 | |
| Hard sand | | | 2200 | 2215 | Shale reduced at 2200 - 5 3/16 |
| 54 feet | | | 2272 | 2305 | Gas 2291 - 3/16 21.5' of gas 60' |
| Byard Sand | | | 2374 | 2380 | 6/16 21.3' of gas after shot 23' |
| <p><i>Changed 15'</i></p> | | | | | |

FIRST PRESSURE TEST IN 6 3/8 CASING

REMARKS

| | | | |
|---------------|------------|------|-------------------|
| 30 Sec. | 0 | lbs. | after shot 3 |
| 1 Min. | 0 | " | 5 |
| 2 " | 0 | " | 10 |
| 5 " | 3 | " | 20 |
| 10 " | 6 | " | 40 |
| 15 " | 9 | " | 12 - 48 - 15 - 58 |
| 30 " | 17 | " | 80 |
| Rock Pressure | 75 | " in | 20 hrs |
| Taken | July 20 | | 19 14 |
| By | G. P. Cole | | |

Shot July 23-1914
20 fts in 5-7 sand

WELL TUBED AND PACKED July 30 1914

VIZ: ~~2375 ft. 2" Tubing (New)~~
~~9 ft. 168 ft. 2" Tubing Anchor~~
~~1 - 5 3/16 x 2" Slip Bolt Packer~~

FIRST PRESSURE TEST IN 2" TUBING

REMARKS

| | | | |
|---------------|------------|------|--------|
| 30 Sec. | 10 | lbs. | |
| 1 Min. | 20 | " | |
| 2 " | 25 | " | |
| 5 " | 40 | " | |
| 10 " | 70 | " | |
| 15 " | 85 | " | |
| 30 " | 125 | " | |
| Rock Pressure | 280 | " in | 18 hrs |
| Taken | July 30 | | 19 14 |
| By | G. P. Cole | | |

MATERIAL FOR THIS WELL RECEIVED FROM FOLLOWING SOURCES:

2375' - 2" Tubing - 5 3/16 x 2" Anchor Packer
 168' of Anchor

Well # 4286 John M. Carr

| NAME | TOP | BOTTOM | OIL | GAS | WATER | REMARKS |
|------------------|------|--------|-----|------|-------|------------------|
| Clay | | 150 | | | | |
| Little Dimpard | 150 | 195 | | | | |
| Plate & Shells | 195 | 250 | | | | |
| Big Dimpard | 250 | 270 | | | | |
| Plate & Lime | 270 | 440 | | | | |
| Yes Sand | 440 | 460 | | | | |
| Plate & Shells | 460 | 570 | | | | |
| 10 ft. Sand | 570 | 585 | | | | |
| Plate & Lime | 585 | 625 | | | | |
| 2nd. Salt Sand | 625 | 800 | | | 715 | 5 barrels per hr |
| Plate & Shells | 800 | 1260 | | | | |
| Big Lime | 1260 | 1323 | | | | |
| Big Injion | 1323 | | | | | |
| Coal/iron | 1360 | 1378 | | | | |
| But. Big | | 1428 | | | | |
| Sand | 1428 | 1448 | | | | |
| Bad Rock | 1448 | 1765 | | | | |
| Light Port. Sand | 1765 | 1810 | | | | |
| Plate | 1810 | 1820 | | | | |
| Light Port. Sand | 1820 | 1920 | | | | |
| Bad Rock | 1920 | 2200 | | | | |
| Ordon. Sand | 2200 | 2213 | | | | |
| Plate | 2213 | 2278 | | | | |
| Light Sand | 2278 | 2305 | | 2291 | | |
| Plate | 2305 | 2374 | | | | |
| Ordon. Sand | 2374 | 2380 | | | | |
| Plate | 2380 | 2499 | | | | |
| Total depth | | 2499 | | | | |

Note reduced at 2300 ft. to 5 3/16