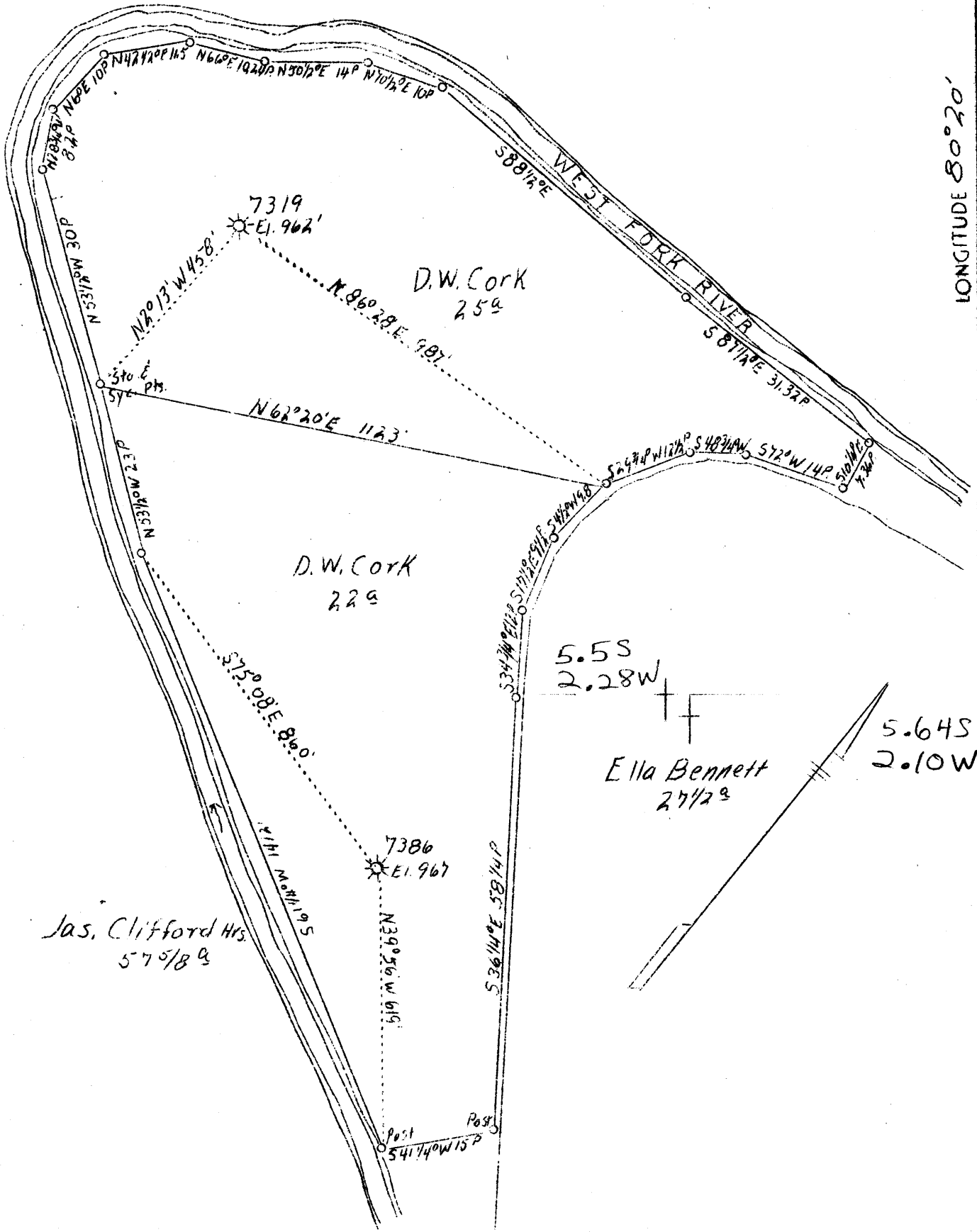


LATITUDE 39°20'

LONGITUDE 80°20'



Jas. Clifford Hrs  
57 5/8 a

ABD. 7386

F.B. 614 P. 7 S 14 E 13 Sh. 44

Company	Hope Natural Gas Co.
Address	Clarksburg, W. Va.
Farm	D. W. Cork - 2 Tracts
Acres	22 & 25
Lease No.	44558 - 44556
Well (Farm) No.	-
Serial No.	7386 - 7319
Elevation (SL)	See plat
Quadrangle	Clarksburg
County	Harrison
County	Clark
Engineer	W. M. Bowers
Eng. Reg. No.	900
Date	March 16, 1939
Scale	1" - 300'

STATE OF WEST VIRGINIA  
Department of Mines  
OIL & GAS DIVISION  
Charleston

WELL LOCATION MAP

File No. HAR-472-A

x Denotes location of well on U. S. Topographic Maps, scale 1 to 62,500, latitude and longitude lines being represented by border lines as shown.

- Denotes one inch spaces on border line of original tracing.

WEST VIRGINIA DEPARTMENT OF MINES  
OIL AND GAS DIVISION

385

WELL RECORD

Permit No. 4727A

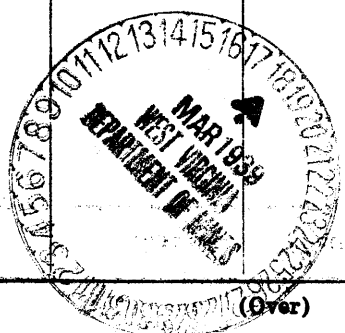
Oil or Gas Well Gas  
(Kind)

Company Hope Natural Gas Company  
Address Clarksburg, W. Va.  
Farm D. W. Cork Acres 22  
Location (waters) West Fork River  
Well No. 7386 Elev. 967  
District Clark County Harrison  
The surface of tract is owned in fee by D. W. Cork  
Address Clarksburg, W. Va.  
Mineral rights are owned by \_\_\_\_\_  
Address \_\_\_\_\_  
Drilling commenced Aug. 13, 1923  
Drilling completed Oct. 23, 1923  
Date shot 10-24-1923 Depth of shot Speechley  
Open Flow \_\_\_\_\_ /10ths Water in \_\_\_\_\_ Inch  
\_\_\_\_\_ /10ths Merc. in \_\_\_\_\_ Inch

Casing and Tubing.	Used in Drilling	Left in Well	Packers
Size			
16.			Kind of Packer
13.	26	26	
10.	331	122	Size of
8 1/4.	801	801	
6 5/8.	1308	1308	Depth set
5 3/16.	<u>2185</u>	<u>2285</u>	
3.			Perf. top
2.	2931	Pulled	Perf. bottom
Liners Used			Perf. top
			Perf. bottom

Volume \_\_\_\_\_ Cu. Ft. CASING CEMENTED \_\_\_\_\_ SIZE \_\_\_\_\_ No. FT. \_\_\_\_\_ Date \_\_\_\_\_  
Rock Pressure \_\_\_\_\_ lbs. **Not cemented**  
Oil \_\_\_\_\_ bbls., 1st 24 hrs. COAL WAS ENCOUNTERED AT \_\_\_\_\_ FEET \_\_\_\_\_ INCHES  
Fresh water 80-184 feet \_\_\_\_\_ feet \_\_\_\_\_ FEET **No coal** INCHES \_\_\_\_\_ FEET \_\_\_\_\_ INCHES  
Salt water 770 feet \_\_\_\_\_ feet \_\_\_\_\_ FEET \_\_\_\_\_ INCHES \_\_\_\_\_ FEET \_\_\_\_\_ INCHES

Formation	Color	Hard or Soft	Top	Bottom	Oil Gas or Water	Depth Found	Remarks
Little Dunkard Sand			180	220	Water	80-184	Fresh
Big Dunkard Sand			295	330			
Salt Sand			510	797	Water	<u>770</u>	
Maxon Sand			1127	1157			
Big Lime			1235	1308			
Big Injun Sand			1306	1420			
Gantz Sand			1695	1750	Gas	1735	
Fifty Foot Sand			1770	1900			
Thirty Foot Sand			1930	1965			
Gordon Stray Sand			2061	2065			
Gordon Sand			2078	2102			
Fourth Sand			2114	2126			
Fifth Sand			2208	2242	Gas	2217-2227	
Speechley Sand			2895	2914	Gas	2910	
Total Depth			2927				



(Over)

