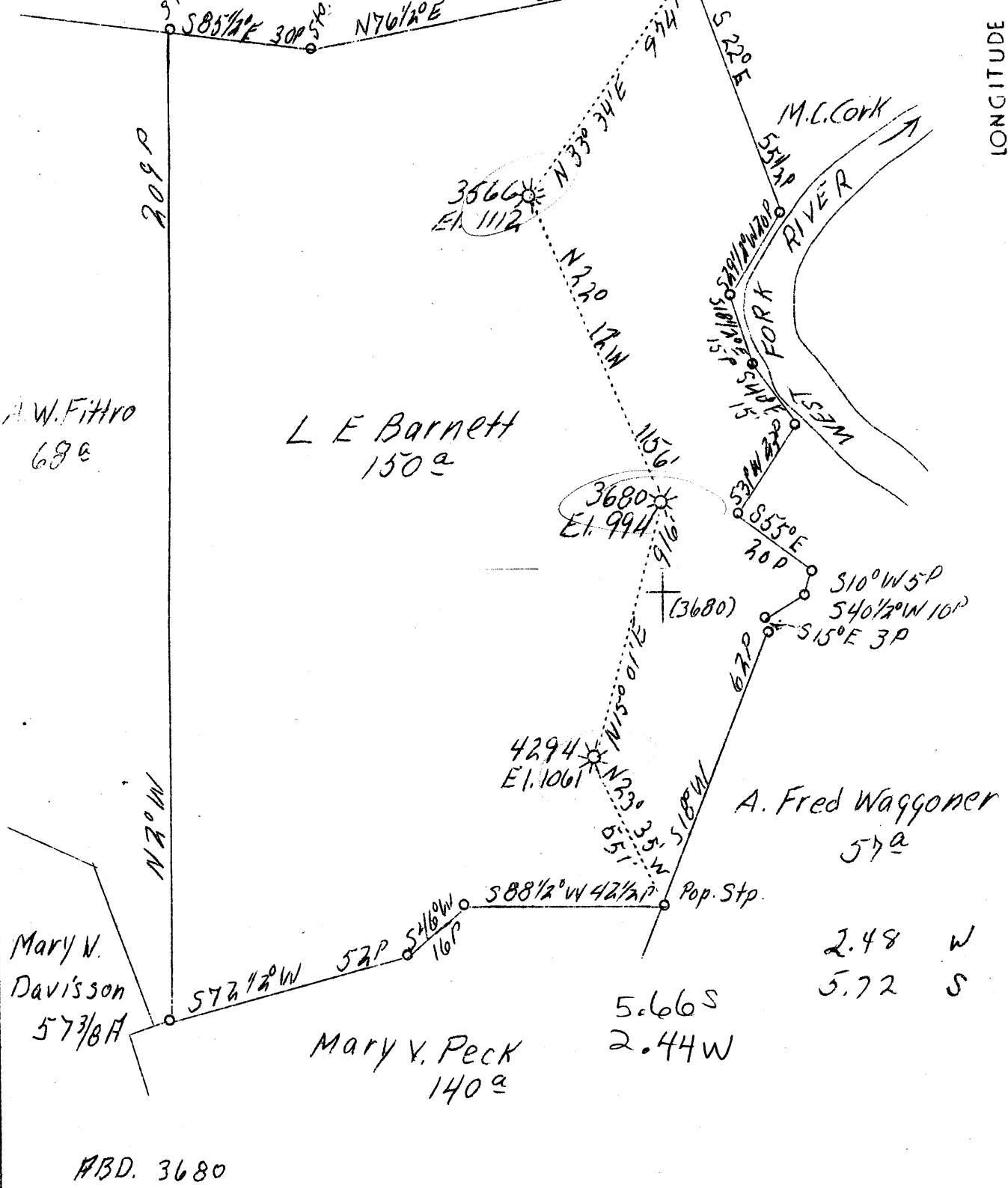


LATITUDE 39° 20'

LONGITUDE 80° 20'

Harrison County Poor Farm
100a



A.W. Fittro
69a

L E Barnett
150a

A. Fred Waggoner
57a

Mary V.
Davisson
57 3/8 A

Mary V. Peck
140a

2.48 W
5.72 S

5.66 S
2.44 W

ABD. 3680

Company	Hope Natural Gas Co.
Address	Clarksburg, W.Va.
Farm	L.E. Barnett
Acres	150
Lease No.	15357
Serial No.	3566, 3680, 4294
El. (S.L.)	1112, 994, 1061
Quadrangle	Clarksburg
County	Harrison
District	Clark
Eng.	W.M. Bowers
Eng. Reg. No. 4	900
Date	5/23/39
Scale	1" = 500'

STATE OF WEST VIRGINIA
Department of Mines
OIL AND GAS DIVISION
Charleston

WELL LOCATION MAP

File No. Har-485-A

x Denotes location of well on U.S. Topographic Maps, scale 1 to 62,500, latitude and longitude lines being represented by border lines as shown.

- Denotes one inch spaces on border line of original tracing.

STATE OF WEST VIRGINIA
DEPARTMENT OF MINES
OIL AND GAS DIVISION

396A

WELL RECORD

Permit No. *485A*
Clarksburg, W. Va.

Oil or Gas Well Gas
(Kind)

Company	Hope Natural Gas Company	Casing and Tubing	Used in Drilling	Left in Well	Packers
Address	Clarksburg, W. Va.	Size			
Farm	L. E. Barnett Acres. 150	16			Kind of Packer
Location (waters)	West Fork River	13			
Well No.	3680 Elev. 994	10	152	152	Size of
District	Clark County Harrison	8 1/4	807	807	Depth set
The surface of tract is owned in fee by	L. E. Barnett Heirs	6 5/8	1310	1310	
Joseph Barnett, Jr. Address	Stillwater, Okla.	5 3/16	2063	2063	
Mineral rights are owned by	do.	3			Perf. top
Address		2			Perf. bottom
Drilling commenced	1-1-1915	Line used			Perf. top
Drilling completed	2-13-1915. Deeper in 1925.		2955	Pulled	Perf. bottom
Date shot	8-19-1925				
Open Flow	/10ths Water in Inch				
	/10ths Merc. in Inch				
Volume	Cu. Ft.	CASING CEMENTED	SIZE	No. FT.	Date
Rock Pressure	lbs. hrs.	Not cemented			
Oil	bbls., 1st 24 hrs.	COAL WAS ENCOUNTERED AT FEET INCHES			
Fresh water	None recorded feet	Below coal FEET INCHES			
Salt water	540 feet	FEET INCHES			

DM

Formation	Color	Hard or Soft	Top	Bottom	Oil Gas or Water	Depth Found	Remarks
Little Dunkard Sand			170	200			
Big Dunkard Sand			300	375			
Gas Sand			530	590	Water	540	
First Salt Sand			636	710			
Second Salt Sand			718	810			
Maxon Sand			950	980	Gas	950	
Little Lime			1210	1228			
Pencil Cave			1228	1248			
Big Lime			1248	1306			
Big Injun Sand			1306	1416			
Squaw Sand			1520	1560			
Berea Sand			1695	1730	Gas	1725	
Gantz Sand			1800	1820			
Fifty Foot Sand			1867	1950			
Thirty Foot Sand			1974	1985			
Gordon Stray Sand			2060	2085			
Gordon Sand			2092	2130	Gas	2093	
Fifth Sand			2214	2249	Gas	2218- 2235	
Sand			2709	2729			
Speechley Sand			2923	2931	Gas	2925	
Total Depth			2963				

