

LATITUDE

39° 17' 30"



1-57  
80

LONGITUDE

7'5 OGIS topo location

7.5' loc	<u>.33S</u>	15' loc	_____
	<u>.75W</u>	(calc.)	_____

Company HNG

Farm Charles Comer

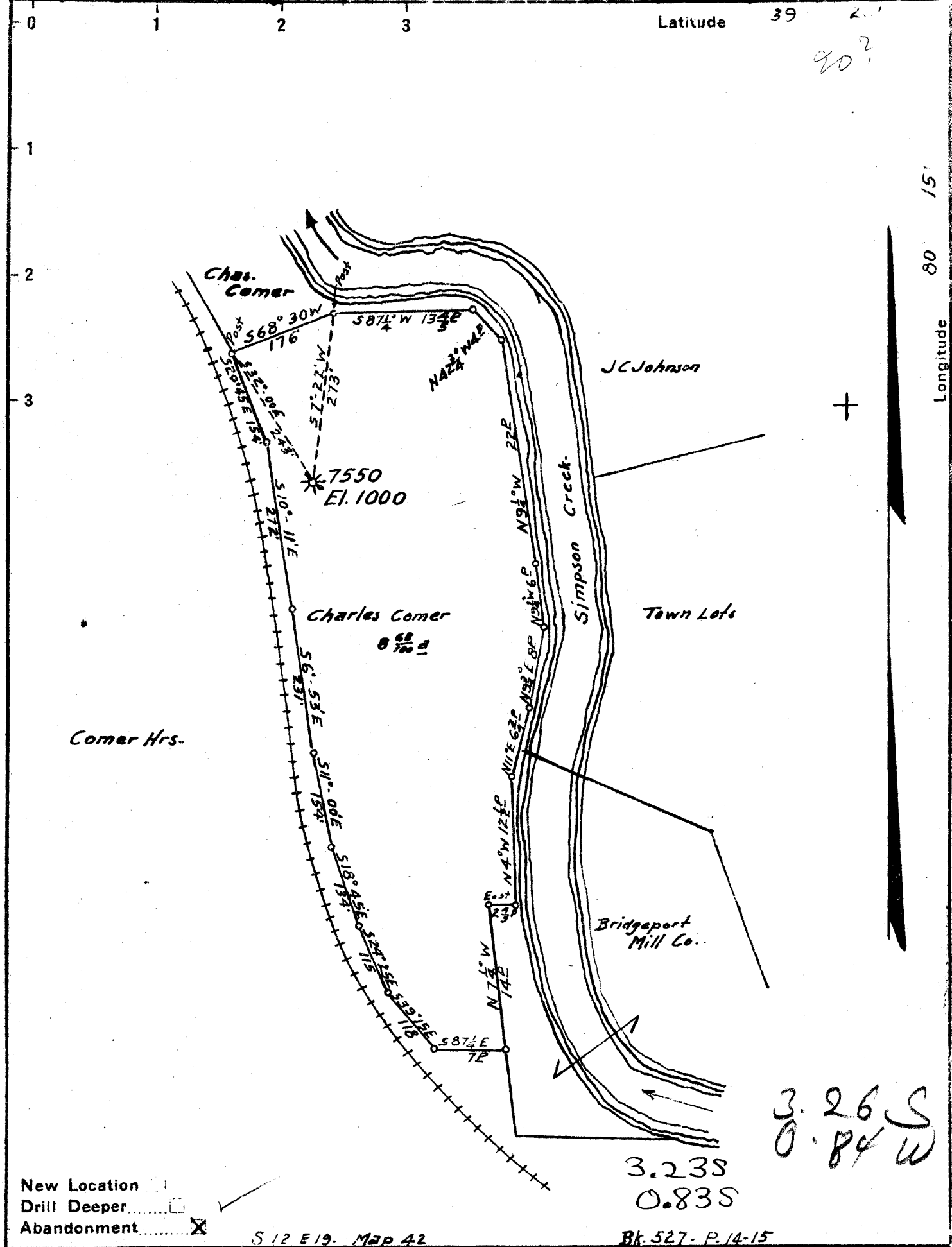
Quad Clarksburg 7 1/2

County Harrison

District Simpson

WELL LOCATION MAP

File No. HAR 716-A



New Location   
 Drill Deeper   
 Abandonment

Company HOPE NATURAL GAS CO.  
 Address CLARKSBURG W.V.  
 Farm Charles Comer  
 Tract \_\_\_\_\_ Acres 10 Lease No. 45453  
 Well (Farm) No. 1 Serial No. 7550  
 Elevation (Spirit Level) 1000.  
 Quadrangle CLARKSBURG  
 County Harrison District Simpson  
 Engineer W.M. Bowers  
 Engineer's Registration No. 900  
 File No. \_\_\_\_\_ Drawing No. \_\_\_\_\_  
 Date Jan 14<sup>th</sup> 1942 Scale 1" = 200'

STATE OF WEST VIRGINIA  
 DEPARTMENT OF MINES  
 OIL AND GAS DIVISION  
 CHARLESTON

**WELL LOCATION MAP**  
 FILE NO. H27-716 A

+ Denotes location of well on United States Topographic Maps, scale 1 to 62,500, latitude and longitude lines being represented by border lines as shown.

- Denotes one inch spaces on border line of original tracing.

STATE OF WEST VIRGINIA  
DEPARTMENT OF MINES  
OIL AND GAS DIVISION

575

WELL RECORD

Ab 716-A  
Permit No. 716-A

Oil or Gas Well Gas  
(Kind)

Company Hope Natural Gas Company  
 Address Clarksburg, W. Va.  
 Farm Charles Comer Acres 10  
 Location (waters) (1)  
 Well No. 7550 Elev. 1000  
 District Simpson County Harrison  
 The surface of tract is owned in fee by Charles Comer  
 Address Bridgeport, W. Va.  
 Mineral rights are owned by \_\_\_\_\_  
 Address \_\_\_\_\_  
 Drilling commenced 2-9-17  
 Drilling completed 4-14-17  
 Date shot Not shot Depth of shot \_\_\_\_\_  
 Open Flow /10ths Water in \_\_\_\_\_ Inch  
 /10ths Merc. in \_\_\_\_\_ Inch  
 Volume \_\_\_\_\_ Cu. Ft.  
 Rock Pressure \_\_\_\_\_ lbs \_\_\_\_\_ hrs.  
 Oil \_\_\_\_\_ bbls., 1st 24 hrs.  
 Fresh water None recorded feet \_\_\_\_\_ feet  
 Salt water None recorded feet \_\_\_\_\_ feet

Casing and Tubing	Used in Drilling	Left in Well	Packers
Size			Kind of Packer
16			
13			
10	125	125	Size of
8 1/4	761	761	
6 5/8	1221	1221	Depth set
5 3/16			
3			Perf. top
2	2318	2318	Perf. bottom
Liners Used			Perf. top
			Perf. bottom

CASING CEMENTED \_\_\_\_\_ SIZE \_\_\_\_\_ No. Ft. \_\_\_\_\_ Date \_\_\_\_\_  
2" tubing packer set at 1086 and filled with cement on outside of tubing from packer to surface  
 COAL WAS ENCOUNTERED AT \_\_\_\_\_ FEET \_\_\_\_\_ INCHES  
 \_\_\_\_\_ FEET No coal INCHES \_\_\_\_\_ FEET \_\_\_\_\_ INCHES  
 \_\_\_\_\_ FEET \_\_\_\_\_ INCHES \_\_\_\_\_ FEET \_\_\_\_\_ INCHES

Formation	Color	Hard or Soft	Top	Bottom	Oil, Gas or Water	Depth Found	Remarks
Little Dunkard Sand			280	305			
Big Dunkard Sand			325	360			
Gas Sand			465	505			
First Salt Sand			520	550			
Second Salt Sand			565	670			
Maxon Sand			1070	1105			
Little Lime			1105	1195			
Pencil Cave			1195	1210			
Big Lime			1210	1264			
Big Injun Sand			1264	1374	Gas	1356-1358	
Fifty Foot Sand			1855	1900			
Thirty Foot Sand			1905	1940			
Fourth Sand			2182	2196			
Fifth Sand			2267	2292	Gas	2268	
Total Depth				2318			

Formation	Color	Hard or Soft	Top	Bottom	Oil, Gas or Water	Depth Found	Remarks

Date January 16, 1942., 19.....

APPROVED Hope Natural Gas Company, Owner

By *[Signature]* General Supt.  
 (Title) *m*