

LATITUDE

39° 20' 00''

88° 27' 30''

LONGITUDE

7'5 OGIS topo location

7.5' loc, 2.36 S  
1.85 W

15' loc \_\_\_\_\_  
(calc.) \_\_\_\_\_

Company \_\_\_\_\_

Farm \_\_\_\_\_

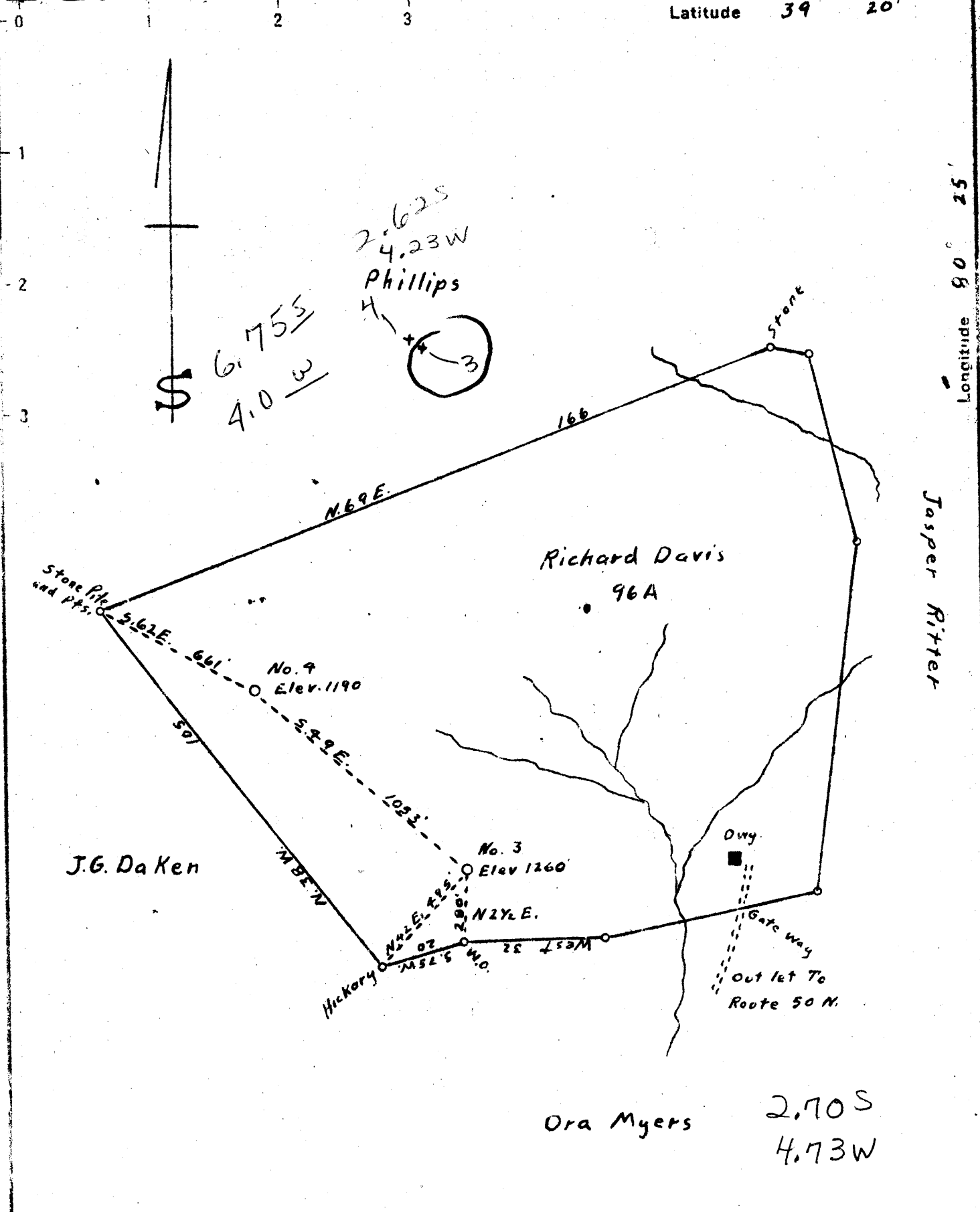
Quad Wolf Summit

County Har

District Ten Mile

WELL LOCATION MAP

File No. 887-A Har



New Location   
 Drill Deeper   
 Abandonment  X

Company William Meses  
 Address 189 W. Main St. Salem, W. Va.  
 Farm Richard Davis  
 Tract \_\_\_\_\_ Acres 96 Lease No. \_\_\_\_\_  
 Well (Farm) No. 3-4 Serial No. \_\_\_\_\_  
 Elevation (Spirit Level) 1260-1190  
 Quadrangle Clarksburg  
 County Harrison District Tenmile  
 Engineer A. K. Westfall  
 Engineer's Registration No. \_\_\_\_\_  
 File No. \_\_\_\_\_ Drawing No. \_\_\_\_\_  
 Date July 17, 1945 Scale 1" = 30 Feet

STATE OF WEST VIRGINIA  
 DEPARTMENT OF MINES  
 OIL AND GAS DIVISION  
 CHARLESTON

WELL LOCATION MAP

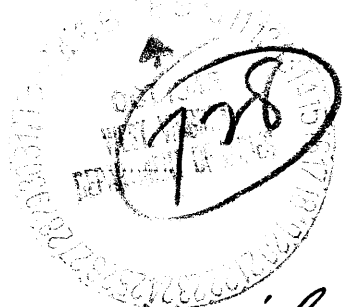
FILE NO. HAR-887-A-#3  
HAR-888-A-#4

+ Denotes location of well on United States Topographic Maps, scale 1 to 62,500, latitude and longitude lines being represented by border lines as shown.

- Denotes one inch spaces on border line of original tracing



STATE OF WEST VIRGINIA  
DEPARTMENT OF MINES  
OIL AND GAS DIVISION



WELL RECORD

Permit No. Har-887-A

Oil or Gas Well oil  
(KIND)

Company George W. Moses  
Address 7 South St., Salem, W. Va  
Farm Richard Davis Acres 96  
Location (waters) \_\_\_\_\_  
Well No. 3 Elev. 1260  
District Jenns County Harrison  
The surface of tract is owned in fee by Ed Meliker  
Address Waynesburg, Pa.  
Mineral rights are owned by \_\_\_\_\_  
Address \_\_\_\_\_

Casing and Tubing	Used in Drilling	Left in Well	Packers
Size			Kind of Packer
16			
13			
10			Size of
8 1/4			
6 5/8		<u>2098</u>	Depth set
5 3/16			
3			Perf. top
2	<input checked="" type="checkbox"/>	<u>2802</u>	Perf. bottom
Liners Used			Perf. top
			Perf. bottom

Drilling commenced \_\_\_\_\_  
Drilling completed \_\_\_\_\_  
Date Shot \_\_\_\_\_ From \_\_\_\_\_ To \_\_\_\_\_  
With \_\_\_\_\_  
Open Flow \_\_\_\_\_ /10ths Water in \_\_\_\_\_ Inch  
\_\_\_\_\_ /10ths Merc. in \_\_\_\_\_ Inch  
Volume \_\_\_\_\_ Cu. Ft.  
Rock Pressure \_\_\_\_\_ lbs. \_\_\_\_\_ hrs.  
Oil \_\_\_\_\_ bbls., 1st 24 hrs.  
Fresh water \_\_\_\_\_ feet \_\_\_\_\_ feet  
Salt water \_\_\_\_\_ feet \_\_\_\_\_ feet

CASING CEMENTED \_\_\_\_\_ SIZE \_\_\_\_\_ No. Ft. \_\_\_\_\_ Date \_\_\_\_\_  
COAL WAS ENCOUNTERED AT 678 FEET \_\_\_\_\_ INCHES  
\_\_\_\_\_ FEET \_\_\_\_\_ INCHES FEET \_\_\_\_\_ INCHES  
\_\_\_\_\_ FEET \_\_\_\_\_ INCHES FEET \_\_\_\_\_ INCHES

Formation	Color	Hard or Soft	Top	Bottom	Oil, Gas or Water	Depth Found	Remarks
<u>Pitts Coal</u>			<u>678</u>	<u>686</u>			
<u>S. Shank</u>			<u>1065</u>	<u>1086</u>			
<u>B. Shank</u>			<u>1184</u>	<u>1187</u>			
<u>S. Lime</u>			<u>1936</u>	<u>1991</u>			
<u>B. Lime</u>			<u>1997</u>	<u>2078</u>	<u>678-2098</u>		
<u>B. Injun</u>			<u>2078</u>	<u>2146</u>			
<u>Berea Grit</u>			<u>2466</u>	<u>2471</u>			
<u>Fifty Foot</u>			<u>2572</u>	<u>2607</u>			
<u>Thirty Foot</u>			<u>2690</u>	<u>2712</u>			
<u>Gordon Stray</u>			<u>2730</u>	<u>2747</u>			
<u>Gordon</u>			<u>2747</u>	<u>2779</u>			
			<u>Total Depth 2802</u>				

