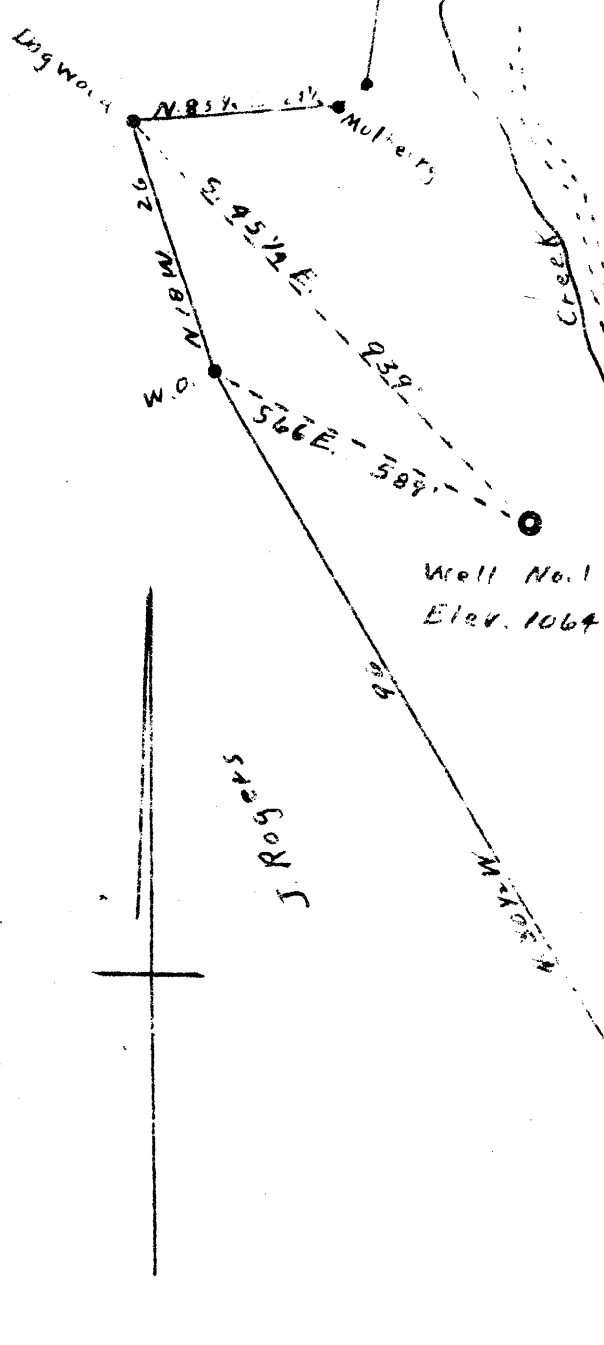


0  
1  
2  
3

J. Rogers

B. H. Brown

B. H. Brown



New Location  
Drill Deeper  
Abandonment X

Company William Moses  
 Address Salem W. Va.  
 Farm R.M. Smith  
 Tract \_\_\_\_\_ Acres 44 Lease No. \_\_\_\_\_  
 Well (Farm) No. 1 Serial No. \_\_\_\_\_  
 Elevation (Spirit Level) 1064  
 Quadrangle CHARSBURG  
 County HARRISON District Termit  
 Registered W.R. Woodford  
 Engineer's Registration No. \_\_\_\_\_  
 File No. \_\_\_\_\_ Drawing No. \_\_\_\_\_  
 Date Aug. 9, 1946 Scale 1" = 26 Feet

STATE OF WEST VIRGINIA  
 DEPARTMENT OF MINES  
 OIL AND GAS DIVISION  
 CHARLESTON

WELL LOCATION MAP  
 FILE NO HAR-1003-A

+ Denotes location of well on United States Topographic Maps, scale 1 to 62,500, latitude and longitude lines being represented by border lines as shown.

- Denotes one-inch spaces on border line of original tracing.



851

STATE OF WEST VIRGINIA  
DEPARTMENT OF MINES  
OIL AND GAS DIVISION

WELL RECORD

Permit No. 1003-A

Oil or Gas Well \_\_\_\_\_  
(KIND)

Company William Moses  
Address Salem, W. Va.  
Farm M. R. Smith Acres 44  
Location (waters) \_\_\_\_\_  
Well No. one Elev. 1064  
District Tenmile County Harrison  
The surface of tract is owned in fee by S. P. N. Gas Co.  
Address Parkersburg, W. Va.  
Mineral rights are owned by \_\_\_\_\_  
Address \_\_\_\_\_  
Drilling commenced \_\_\_\_\_  
Drilling completed \_\_\_\_\_  
Date Shot \_\_\_\_\_ From \_\_\_\_\_ To \_\_\_\_\_  
With \_\_\_\_\_  
Open Flow \_\_\_\_\_ /10ths Water in \_\_\_\_\_ Inch  
\_\_\_\_\_ /10ths Merc. in \_\_\_\_\_ Inch  
Volume \_\_\_\_\_ Cu. Ft.  
Rock Pressure \_\_\_\_\_ lbs. \_\_\_\_\_ hrs.  
Oil \_\_\_\_\_ bbls., 1st 24 hrs.  
Fresh water \_\_\_\_\_ feet \_\_\_\_\_ feet  
Salt water \_\_\_\_\_ feet \_\_\_\_\_ feet

Casing and Tubing	Used in Drilling	Left in Well	Packers
Size			
16			Kind of Packer
13			
10			Size of
8 1/4			
6 1/2		1864	Depth set
5 3/16			
3			Perf. top
2		2785	Perf. bottom
Liners Used			Perf. top
			Perf. bottom

CASING CEMENTED \_\_\_\_\_ SIZE \_\_\_\_\_ No. Ft. \_\_\_\_\_ Date \_\_\_\_\_

COAL WAS ENCOUNTERED AT \_\_\_\_\_ FEET \_\_\_\_\_ INCHES  
\_\_\_\_\_ FEET \_\_\_\_\_ INCHES FEET \_\_\_\_\_ INCHES  
\_\_\_\_\_ FEET \_\_\_\_\_ INCHES FEET \_\_\_\_\_ INCHES

Formation	Color	Hard or Soft	Top	Bottom	Oil, Gas or Water	Depth Found	Remarks
Pgh. Coal			395	398			
Dunkard			900	940			
Maxon			1645	1695			
B. Lime			1730	1790			
B. Injun			1815	1855			
Fifty feet			2350	2400			
Gordon			2500	2550			
Fifth Sand			2760	2766			
Total Depth				2785			

