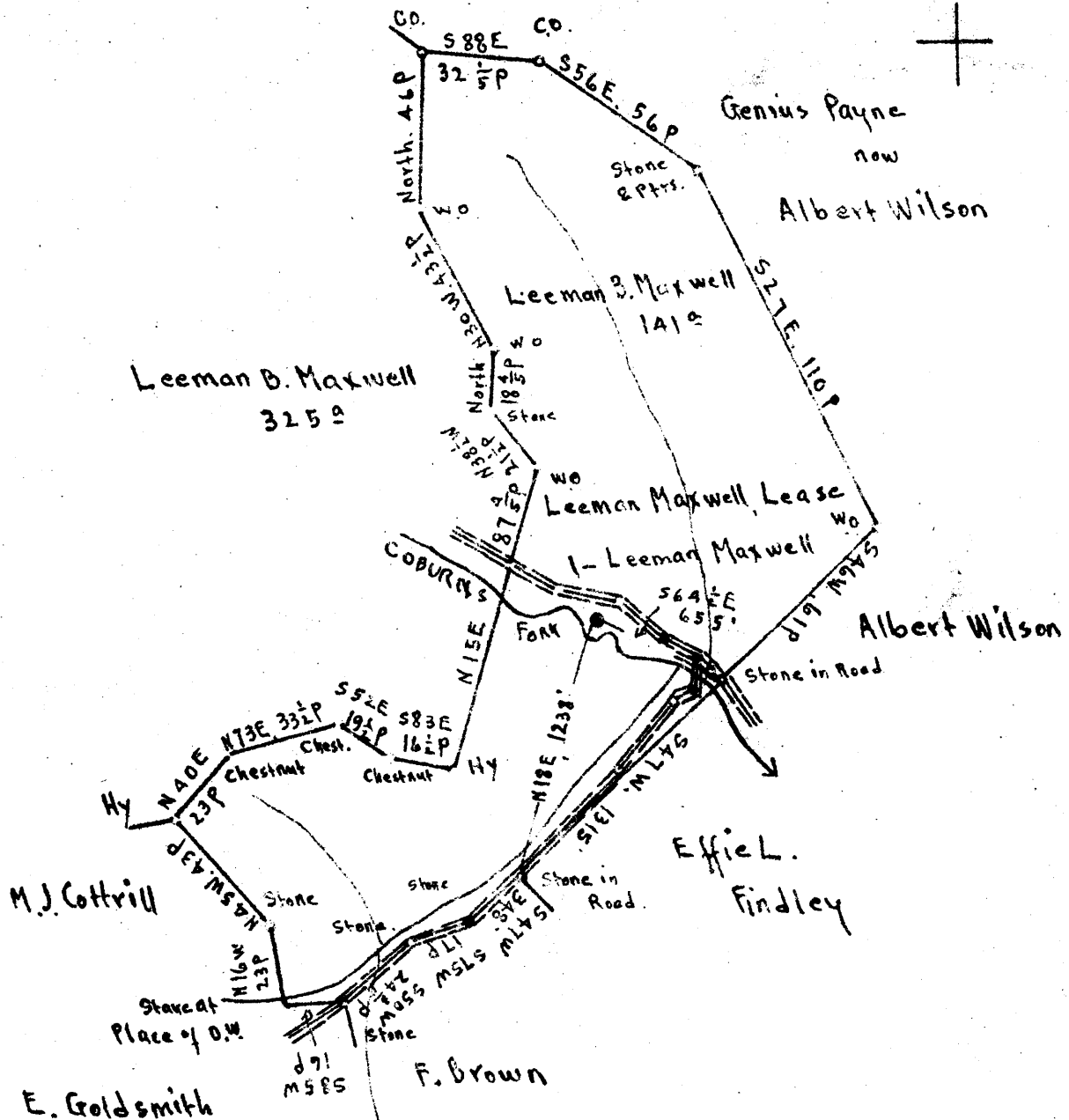


Scale 1" = 800 Feet



Surface: Leeman B. Maxwell, Salem, W.Va.

Coal: Und.  $\frac{1}{2}$  each of Leeman B. Maxwell, Salem, W.Va.  
 Mrs. Jane M. Henderson, West Union, W.Va.

0.81S  
 1.19W

New Location   
 Drill Deeper   
 Abandonment

On 400' map # 3752

S 15 E 5

Company Bradford Supply Co.  
 Address Mattoon Illinois  
 Farm Leeman Maxwell  
 Tract \_\_\_\_\_ Acres 141 Lease No. \_\_\_\_\_  
 Well (Farm) No. 1 Serial No. \_\_\_\_\_  
 Elevation (Spirit Level) Floor - 1077.00  
Ground - 1077.00  
 Quadrangle VADIS  
 County Harrison District Ten Mile  
 Engineer E. C. Tabler  
 Engineer's Registration No. \_\_\_\_\_  
 File No. \_\_\_\_\_ Drawing No. \_\_\_\_\_  
 Date March 13<sup>th</sup> 1948 Scale 1" = 800 Feet.

STATE OF WEST VIRGINIA  
 DEPARTMENT OF MINES  
 OIL AND GAS DIVISION  
 CHARLESTON

WELL LOCATION MAP  
 FILE NO. HAR-1174-A

+ Denotes location of well on United States Topographic Maps, scale 1 to 62,500. Latitude and longitude lines being represented by border lines as shown.

- Denotes one inch spaces on border line of original tracing.



STATE OF WEST VIRGINIA  
DEPARTMENT OF MINES  
OIL AND GAS DIVISION

179

WELL RECORD

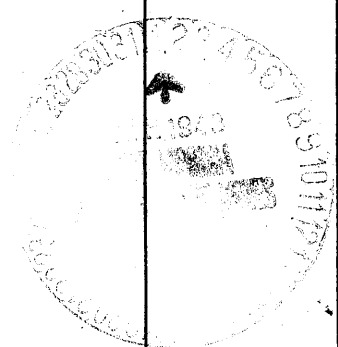
Permit No. \_\_\_\_\_ Oil or Gas Well \_\_\_\_\_ (KIND)

Company Ersdord Supply Co.  
 Address Mattoon, Ill  
 Farm Leeman Maxwell Acres 141  
 Location (waters) \_\_\_\_\_  
 Well No. One Elev. 1077  
 District Ten Mile County Harrison  
 The surface of tract is owned in fee by \_\_\_\_\_  
 Address \_\_\_\_\_  
 Mineral rights are owned by \_\_\_\_\_  
 Address \_\_\_\_\_  
 Drilling commenced \_\_\_\_\_  
 Drilling completed 5/24/1899  
 Date Shot \_\_\_\_\_ From \_\_\_\_\_ To \_\_\_\_\_  
 With \_\_\_\_\_  
 Open Flow \_\_\_\_\_ /10ths Water in \_\_\_\_\_ Inch  
 \_\_\_\_\_ /10ths Merc. in \_\_\_\_\_ Inch  
 Volume \_\_\_\_\_ Cu. Ft.  
 Rock Pressure \_\_\_\_\_ lbs. \_\_\_\_\_ hrs.  
 Oil \_\_\_\_\_ bbls., 1st 24 hrs.  
 Fresh water \_\_\_\_\_ feet \_\_\_\_\_ feet  
 Salt water \_\_\_\_\_ feet \_\_\_\_\_ feet

Casing and Tubing	Used in Drilling	Left in Well	Packers
Size			
16			Kind of Packer
13			
10			Size of
8 1/4			
6 1/2	1792		Depth set
5 3/16	1804		
3			Perf. top
2			Perf. bottom
Liners Used			Perf. top
			Perf. bottom

CASING CEMENTED \_\_\_\_\_ SIZE \_\_\_\_\_ No. Ft. \_\_\_\_\_ Date \_\_\_\_\_  
 COAL WAS ENCOUNTERED AT 400 FEET 72 INCHES  
 \_\_\_\_\_ FEET \_\_\_\_\_ INCHES FEET \_\_\_\_\_ INCHES  
 \_\_\_\_\_ FEET \_\_\_\_\_ INCHES FEET \_\_\_\_\_ INCHES

Formation	Color	Hard or Soft	Top	Bottom	Oil, Gas or Water	Depth Found	Remarks
Pgh Coal			400	406			
Big Injun			1820	1860			
50 Ft I			2370	2420			
Stray Sand			2420	2470			
Gordon "			2480	2520			
5th			2692	2698			
Total Depth.				2732			



1848