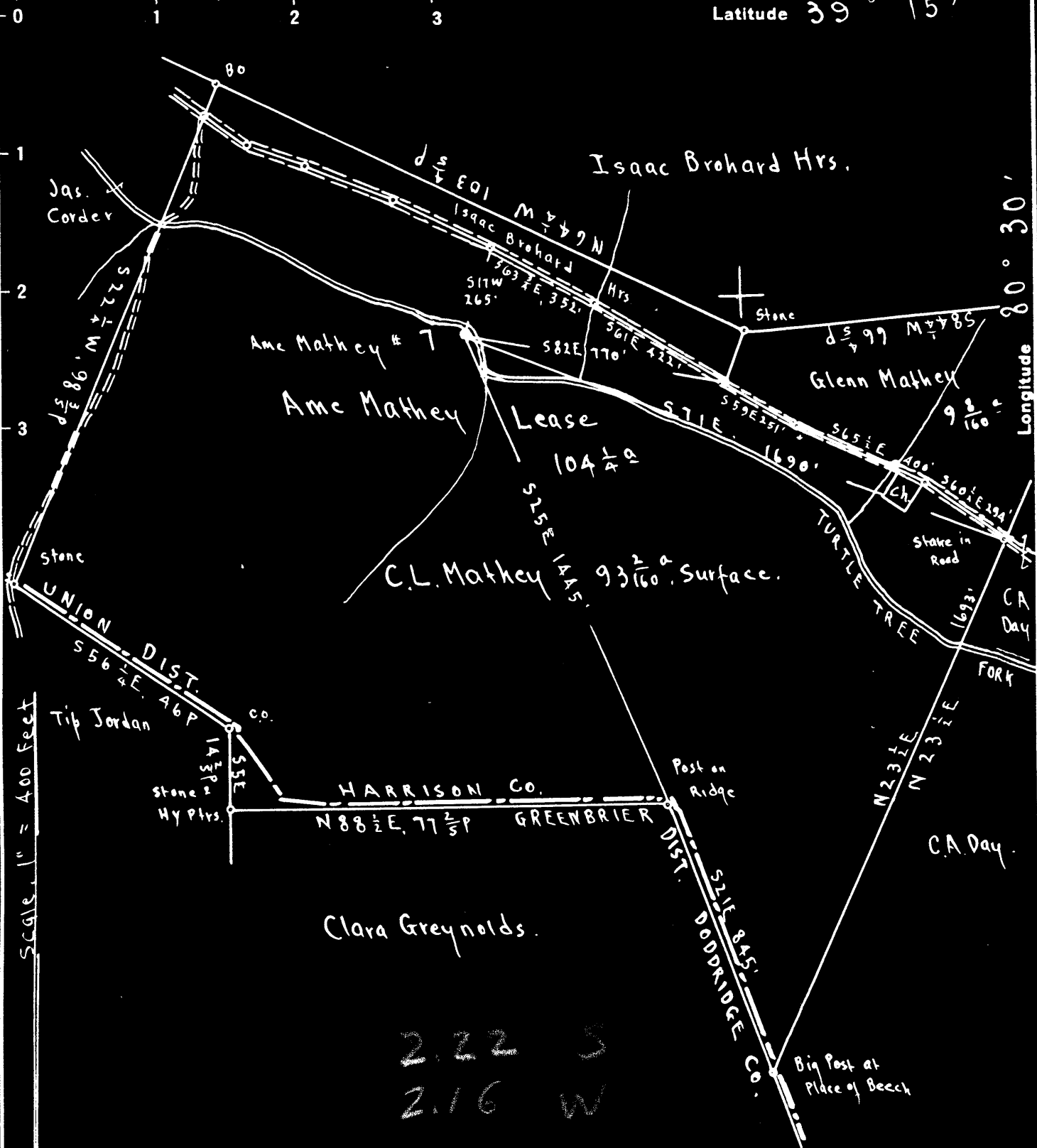


Latitude 39° 15'



2.22 S  
2.16 W

Surface: C.L. Mathey, R.F.D #2, Bristol, Harrison Co., W.Va.  
Coal: Mrs. Virginia A. Tetrick, 271 Clay St., Clarksburg, W.Va.

New Location   
Drill Deeper   
Abandonment

On 400' map # 3852 S16-17 EA

Company Wm Moses  
 Address Salem, W.Va.  
 Farm A. Mathey  
 Tract Acres 104 1/2 Lease No. 7  
 Well (Farm) No. 7 Serial No. 1113.00  
 Elevation (Spirit Level) Floor - 1113.00  
Ground - 1110.50  
 Quadrangle VADIS  
 County Harrison District Union  
 Engineer E.C. Tabler  
 Engineer's Registration No. \_\_\_\_\_  
 File No. \_\_\_\_\_ Drawing No. \_\_\_\_\_  
 Date Aug 19<sup>th</sup> 1948 Scale 1" = 400 Feet

STATE OF WEST VIRGINIA  
DEPARTMENT OF MINES  
OIL AND GAS DIVISION  
CHARLESTON

### WELL LOCATION MAP

FILE NO. HAR-1279-A

+ Denotes location of well on United States Topographic Maps, scale 1 to 62,500, latitude and longitude lines being represented by border lines as shown.

- Denotes one inch spaces on border line of original tracing.



STATE OF WEST VIRGINIA  
DEPARTMENT OF MINES  
OIL AND GAS DIVISION

1073

WELL RECORD

Oil or Gas Well oil

(KIND)

Permit No. 1279-A

Company William Moses  
Address Salem, W. Va.

Farm A. Mathey Acres 104 1/2

Location (waters) \_\_\_\_\_

Well No. Seven Elev. 1110.50

District Union County Harrison

The surface of tract is owned in fee by South Penn Nat'l Gas Co. Address Parkersburg, W. Va. 8 1/4

Mineral rights are owned by Mrs. Virginia A. Tetrick 6 1/2  
271 Clay St., Address Clarksburg, W. Va. 5 3/16

Drilling commenced \_\_\_\_\_  
Drilling completed 5/1/1902

Date Shot \_\_\_\_\_ From \_\_\_\_\_ To \_\_\_\_\_

With \_\_\_\_\_

Open Flow \_\_\_\_\_ /10ths Water in \_\_\_\_\_ Inch  
\_\_\_\_\_ /10ths Merc. in \_\_\_\_\_ Inch

Volume \_\_\_\_\_ Cu. Ft.

Rock Pressure \_\_\_\_\_ lbs. \_\_\_\_\_ hrs.

Oil \_\_\_\_\_ bbls., 1st 24 hrs.

Fresh water \_\_\_\_\_ feet \_\_\_\_\_ feet

Salt water \_\_\_\_\_ feet \_\_\_\_\_ feet

Casing and Tubing	Used in Drilling	Left in Well	Packers
Size			
16			Kind of Packer
13			
10			Size of
8 1/4			
6 1/2		1935	Depth set
5 3/16			
3			Perf. top
2			Perf. bottom
Liners Used			Perf. top
			Perf. bottom

CASING CEMENTED \_\_\_\_\_ SIZE \_\_\_\_\_ No. Ft. \_\_\_\_\_ Date \_\_\_\_\_

COAL WAS ENCOUNTERED AT 515 FEET \_\_\_\_\_ INCHES

\_\_\_\_\_ FEET \_\_\_\_\_ INCHES FEET \_\_\_\_\_ INCHES

\_\_\_\_\_ FEET \_\_\_\_\_ INCHES FEET \_\_\_\_\_ INCHES

Formation	Color	Hard or Soft	Top	Bottom	Oil, Gas or Water	Depth Found	Remarks
Pitts. Coal			515	520			
Dunkard Sand			950	965			
Big Lime			1880	1940			
Stray Sand			2565	2605			
Gordon Sand			2610	2640			
Fifth Sand			2815	2820			
Total Depth				2837			

