

LATITUDE 39° 25' 00"

LONGITUDE 101° 51' 00"



2.47a  
1.00w

7'5 OGIS topo location

7.5' loc \_\_\_\_\_

15' loc \_\_\_\_\_  
(calc.) \_\_\_\_\_

Company Simons Pipe Co.

Farm Williams Hens #1

Quad Shinnston 7<sup>1/2</sup>

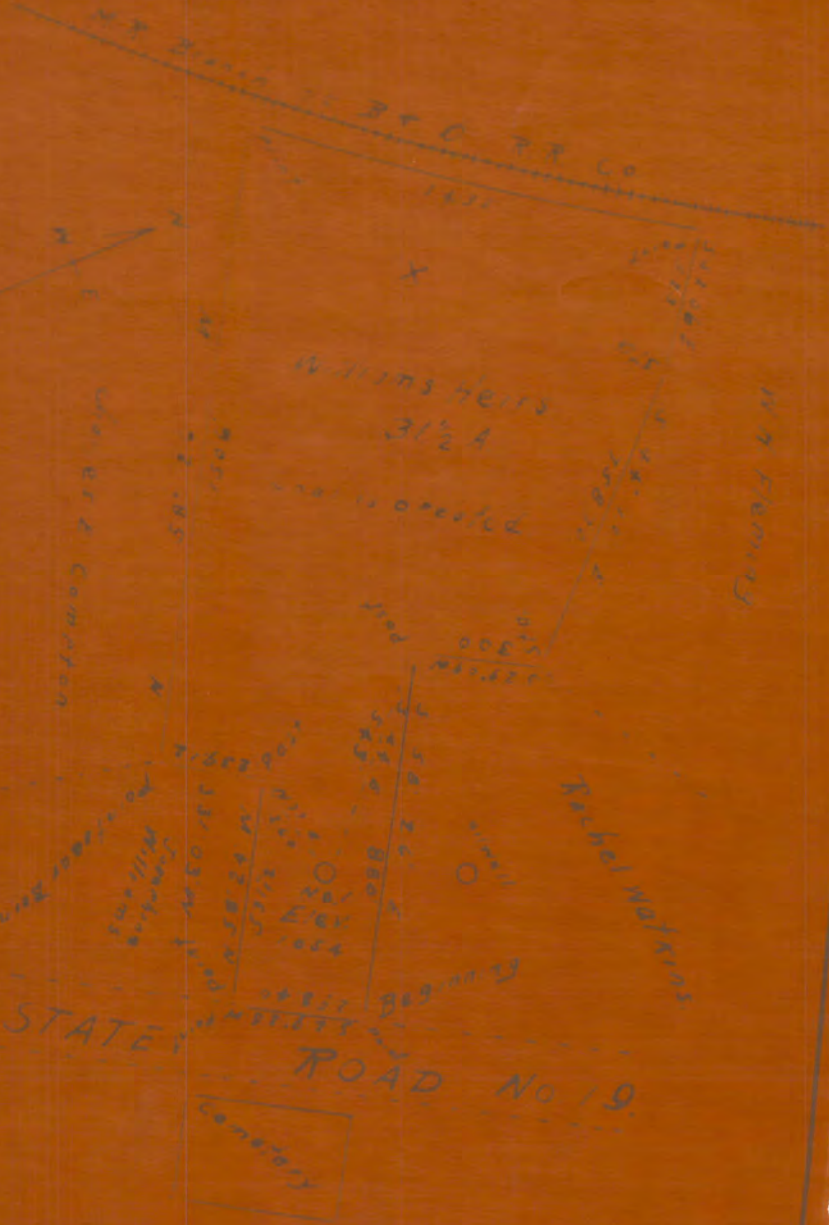
County Harrison

District Clay

WELL LOCATION MAP

File No. 033-31316

Longitude 80° 15'



New Location   
Drill Deeper   
Abandonment

Company Simons Tree Co  
Address Grandville Michigan  
Farm Williams Heirs  
Tract One Acres 3 1/2 Lease No. \_\_\_\_\_  
Well Form No. \_\_\_\_\_ Date No. \_\_\_\_\_  
Elevation (Spill level) 1000 Feet

STATE OF WEST VIRGINIA  
DEPARTMENT OF MINES  
OIL AND GAS DIVISION  
CHARLESTON

WELL LOCATION MAP  
FILE NO. HAR-1316A

WILLIAMS HEIRS NO. 1 WELL.

1316A

Clay District, Harrison County, W. Va.

By Simons Pipe Co., Box 383, Grandville, Michigan.

Abandoned under permit Har-.....-A?

On 31½ acres.

Elevation, 1054' L.

Drilling commenced April 12, 1916; completed May 22, 1916.

Shot with 30 qts.

8½" casing, 212'; 6½", 1510'; 5" liner, 315' (2091-2406');

2" tubing, 2547'; all left in.

8½" casing cemented, 212'.

Oil well. Record to Dept. of Mines not dated or stamped.

Record to RCT from Mrs. Griffith September 14, 1949. Old File No. 1153.

	Top.	Bottom.
Pittsburgh Coal (cemented in)	150	- 158
Little Dunkard Sand	550	- 590
Big Dunkard Sand	665	- 720
Gas Sand	825	- 890
First Salt Sand	950	- 1050
Second Salt Sand	1085	- 1185
Little Lime	1470	- 1485
Pencil Cave	1485	- 1505
Big Lime	1505	- 1575
Big Injun Sand	1575	- 1662
Gantz Sand	2060	- 2085
Fifty-foot Sand	2095	- 2220
Thirty-foot Sand	2230	- 2255
Stray Sand	2330	- 2365
Gordon Sand (hole narrowed, 2406')	2390	- 2422
Fourth Sand	2475	- 2495
Fifth Sand (oil, 2547')	2542	- 2573
Total depth		2573