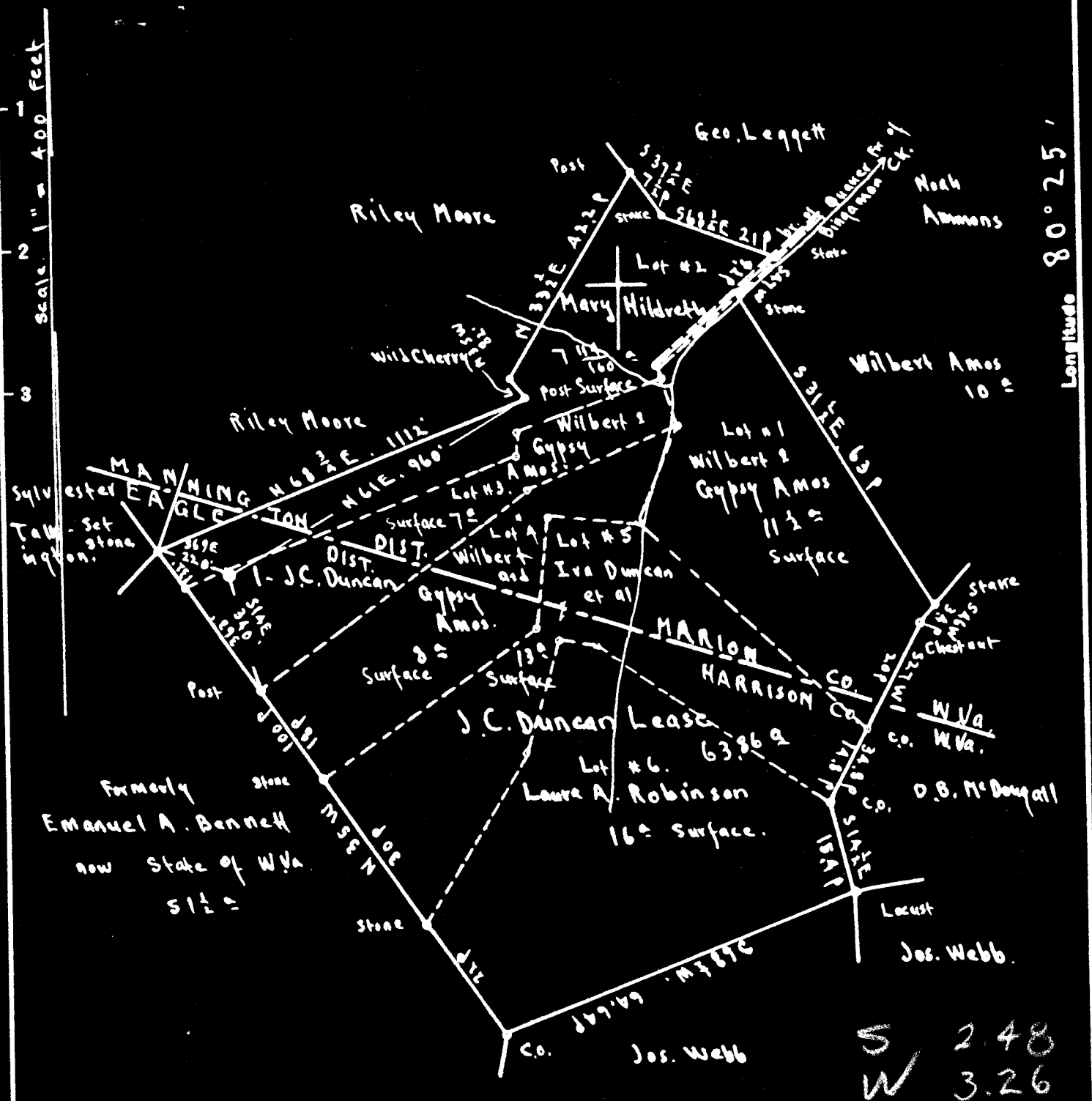


Latitude 39° 30'

Longitude 80° 25'



Surface: Wilbert & Gypsy Amos: R.F.D. # 3, Wallace, Harrison Co., W.Va.  
 Coal: Willis G. Tetrick, Jr. et al. 311 Clay St., Clarksburg, W.Va.

- New Location...
- Drill Deeper.....
- Abandonment.....

On 400' map # 305A N1-2 E 8-9

Company A.C. Perkins  
 Address Barnesville, Ohio  
 Farm J.C. Duncan  
 Tract \_\_\_\_\_ Acres 63.96 Lease No. \_\_\_\_\_  
 Well (Farm) No. 1 Serial No. \_\_\_\_\_  
 Elevation (Spirit Level) Floor 1393.50  
 Ground 1393.50  
 Quadrangle CLARKSBURG  
 County HARRISON District EAGLE  
 Engineer E.C. Tabler  
 Engineer's Registration No. \_\_\_\_\_  
 File No. \_\_\_\_\_ Drawing No. \_\_\_\_\_  
 Date Sept. 15th 1948 Scale 1" = 400 Feet

STATE OF WEST VIRGINIA  
 DEPARTMENT OF MINES  
 OIL AND GAS DIVISION  
 CHARLESTON

**WELL LOCATION MAP**  
 FILE NO. HAR-1430-A

✦ Denotes location of well on United States Topographic Maps, scale 1 to 62,500, latitude and longitude lines being represented by border lines as shown.

— Denotes one inch spaces on border line of original tracing.



STATE OF WEST VIRGINIA  
DEPARTMENT OF MINES  
OIL AND GAS DIVISION

1427

WELL RECORD

Permit No. 1430 A

Oil or Gas Well Oil  
(KIND)

Company A. C. Perkins  
Address Barnesville, Ohio  
Farm J. C. Duncan Acres \_\_\_\_\_  
Location (waters) \_\_\_\_\_  
Well No. 1 Elev. \_\_\_\_\_  
District Logan County Harman  
The surface of tract is owned in fee by \_\_\_\_\_  
Address \_\_\_\_\_  
Mineral rights are owned by \_\_\_\_\_  
Address \_\_\_\_\_  
Drilling commenced July 11, 1923  
Drilling completed Nov. 8, 1923  
Date Shot \_\_\_\_\_ From \_\_\_\_\_ To \_\_\_\_\_  
With \_\_\_\_\_

Casing and Tubing	Used in Drilling	Left in Well	Packers
Size			Kind of Packer
16			
13			
10	<b>No Record</b>		Size of
8 1/2	<b>1749</b>	<b>1849</b>	
6 5/8	<b>2450</b>	<b>2450</b>	Depth set
5 3/16			
3			Perf. top
2			Perf. bottom
Liners Used			Perf. top
			Perf. bottom

Open Flow /10ths Water in \_\_\_\_\_ Inch  
/10ths Merc. in \_\_\_\_\_ Inch  
Volume \_\_\_\_\_ Cu. Ft.  
Rock Pressure \_\_\_\_\_ lbs. \_\_\_\_\_ hrs.  
Oil \_\_\_\_\_ bbls., 1st 24 hrs.  
Fresh water \_\_\_\_\_ feet \_\_\_\_\_ feet  
Salt water \_\_\_\_\_ feet \_\_\_\_\_ feet

CASING CEMENTED \_\_\_\_\_ SIZE \_\_\_\_\_ No. Ft. \_\_\_\_\_ Date \_\_\_\_\_  
COAL WAS ENCOUNTERED AT \_\_\_\_\_ FEET \_\_\_\_\_ INCHES  
\_\_\_\_\_ FEET \_\_\_\_\_ INCHES FEET \_\_\_\_\_ INCHES  
\_\_\_\_\_ FEET \_\_\_\_\_ INCHES FEET \_\_\_\_\_ INCHES

Formation	Color	Hard or Soft	Top	Bottom	Oil, Gas or Water	Depth Found	Remarks
Pittsburgh Coal			1219	1226			
Little Dunkard			1670	1685			
Big Dunkard			1740	1785			
Gas Sand			1824	1853			
1st. Salt Sand			1958	2000			
2nd. Salt Sand			2035	2250			
Maxon			2365	2380			
Little Lime			2422	2436			
Pencil Cave			2436	2441			
Big Lime			2441	2504			
Big Injun			2504	2623			
Fifty Foot			3085	3115			
Thirty Foot			3168	3218			
Boulder			3249	3270			
Gordon Stray			3270	3300			
Gordon			3312	3339			
Fourth Sand			3342	3348	Oil	3342 to 3347	
Total Depth				3368			



DEC 10 1952

(Over)