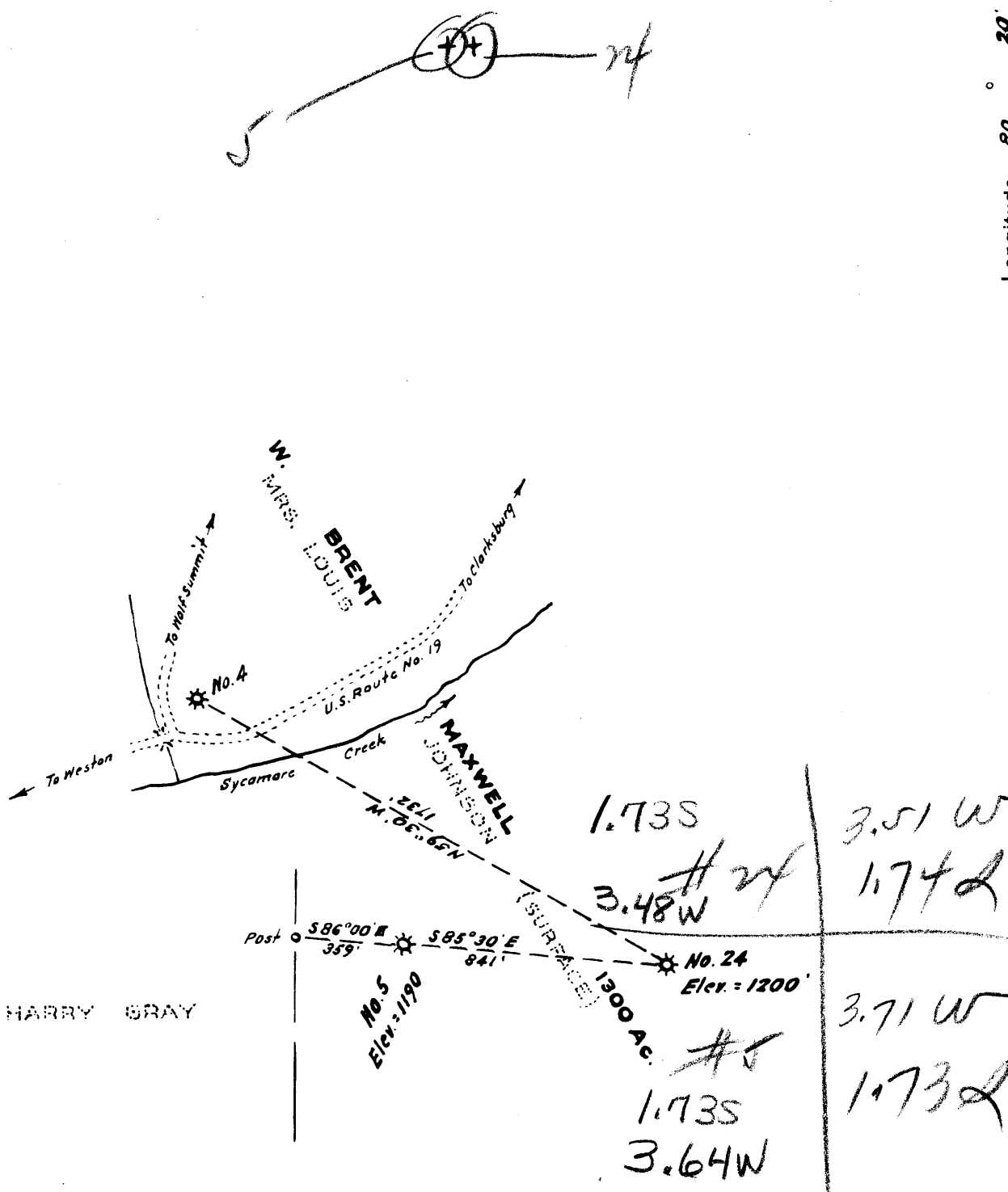


1  
2  
3

Longitude 80° 20'



- New Location
- Drill Deeper
- Abandonment

Surface owned by Mrs. Louis Johnson, whose postoffice address is Clarksburg, West Va.  
 Wells No. 5 and 24 are located on spoil of strip, below Pittsburg coal.

Company VALLEY STEEL PRODUCTS CO.  
 Address St. Louis, Mo.  
 Farm W. Brent Maxwell  
 Tract \_\_\_\_\_ Acres 1300 Lease No. \_\_\_\_\_  
 Well (Farm) No. 5 and 24 Serial No. \_\_\_\_\_  
 Elevation (Spirit Level) No. 5 = 1190, No. 24 = 1200  
 Quadrangle Weston  
 County Harrison District Union  
 Engineer W. S. S. J.  
 Engineer's Registration No. 1227  
 File No. \_\_\_\_\_ Drawing No. \_\_\_\_\_  
 Date April, 1952 Scale 1" = 500'

STATE OF WEST VIRGINIA  
 DEPARTMENT OF MINES  
 OIL AND GAS DIVISION  
 CHARLESTON

**WELL LOCATION MAP**  
 FILE NO. HAR-1529-A-#24  
HAR-1533-A-#5

+ Denotes location of well on United States Topographic Maps, scale 1 to 62,500, latitude and longitude lines being represented by border lines as shown.

- Denotes one inch spaces on border line of original tracing.



STATE OF WEST VIRGINIA  
DEPARTMENT OF MINES  
OIL AND GAS DIVISION

1402

WELL RECORD

Permit No. HAR-1529-A

Oil or Gas Well \_\_\_\_\_ (KIND)

Company Valley Steel Products Company  
 Address Room 504 - Chamber of Commerce Bldg.,  
 Farm W. Brent Maxwell Acres 1300  
 Location (waters) Sycamore Creek  
 Well No. 24 Elev. 1200'  
 District Union County Harrison  
 The surface of tract is owned in fee by \_\_\_\_\_  
 Address \_\_\_\_\_  
 Mineral rights are owned by \_\_\_\_\_  
 Address \_\_\_\_\_  
 Drilling commenced \_\_\_\_\_  
 Drilling completed October 24, 1914  
 Date Shot From \_\_\_\_\_ To \_\_\_\_\_  
 With \_\_\_\_\_  
 Open Flow /10ths Water in \_\_\_\_\_ Inch  
 /10ths Merc. in \_\_\_\_\_ Inch  
 Volume \_\_\_\_\_ Cu. Ft.  
 Rock Pressure \_\_\_\_\_ lbs. \_\_\_\_\_ hrs.  
 Oil \_\_\_\_\_ bbls., 1st 24 hrs.  
 Fresh water \_\_\_\_\_ feet \_\_\_\_\_ feet  
 Salt water \_\_\_\_\_ feet \_\_\_\_\_ feet

Casing and Tubing	Used in Drilling	Left in Well	Packers
Size			
16			Kind of Packer
13			
10			Size of
8 3/4			
6 3/4	1506'	1506'	Depth set
5 3/16			
3			Perf. top
2	2472'	2472'	Perf. bottom
Liners Used			Perf. top
			Perf. bottom

CASING CEMENTED \_\_\_\_\_ SIZE \_\_\_\_\_ No. Ft. \_\_\_\_\_ Date \_\_\_\_\_

COAL WAS ENCOUNTERED AT \_\_\_\_\_ FEET \_\_\_\_\_ INCHES  
 \_\_\_\_\_ FEET \_\_\_\_\_ INCHES \_\_\_\_\_ FEET \_\_\_\_\_ INCHES  
 \_\_\_\_\_ FEET \_\_\_\_\_ INCHES \_\_\_\_\_ FEET \_\_\_\_\_ INCHES

Formation	Color	Hard or Soft	Top	Bottom	Oil, Gas or Water	Depth Found	Remarks
Big Dunkard			700	795			
Big Injun			1541	1631			
Gordon			2180	2240			
Fourth Sand			2268	2308			
Fifth Sand			2425	2450			
Total Depth				2472'			

(Over)

JUL 9 1952