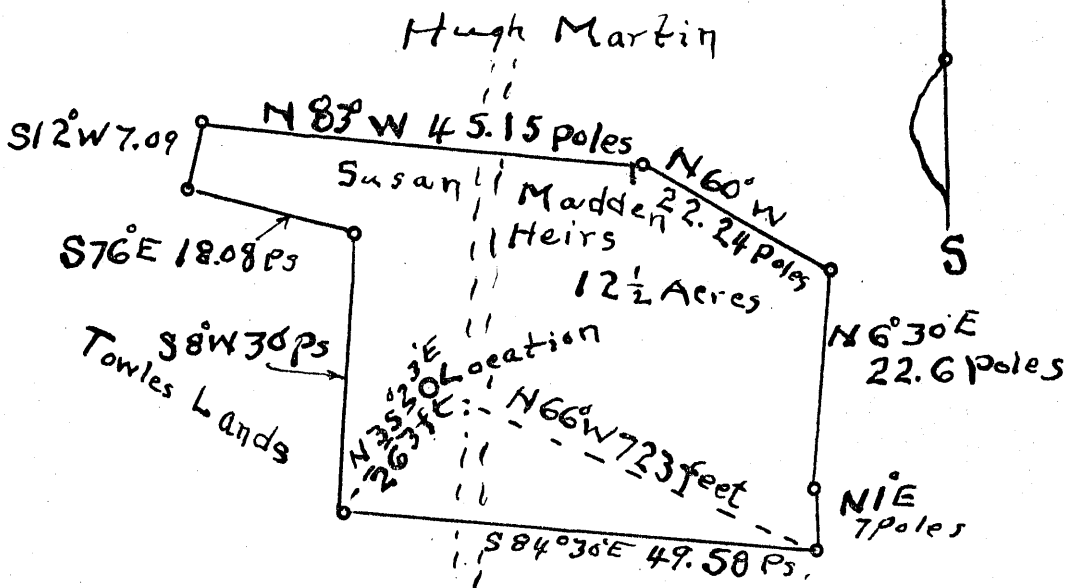


255
0.11W
Longitude 80° 20'



2.485
0.11W

New Location
 Drill Deeper
 Abandonment

Company F. G. Bish
 Address Clarksburg, W. Va.
 Farm Susan Madden Heirs
 Tract 1 Acres 12 1/2 Lease No. _____
 Well (Farm) No. 1 Serial No. _____
 Elevation (Spirit Level) 937
 Quadrangle Clarksburg
 County Harrison District Eagle
 Engineer M. L. B. Winger, C.E.
 Engineer's Registration No. 261
 File No. _____ Drawing No. _____
 Date 11-22-1952 Scale 1" = 20 poles

STATE OF WEST VIRGINIA
 DEPARTMENT OF MINES
 OIL AND GAS DIVISION
 CHARLESTON

WELL LOCATION MAP
 FILE NO. HAR-1671-A

+ Denotes location of well on United States Topographic Maps, scale 1 to 62,500, latitude and longitude lines being represented by border lines as shown.
 - Denotes one inch spaces on border line of original tracing.



1554

STATE OF WEST VIRGINIA
DEPARTMENT OF MINES
OIL AND GAS DIVISION

WELL RECORD

Oil or Gas Well (KIND)

Quadrangle Clarkburg
Permit No. 1672A

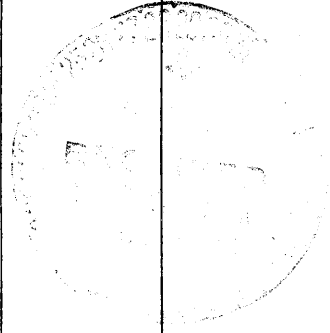
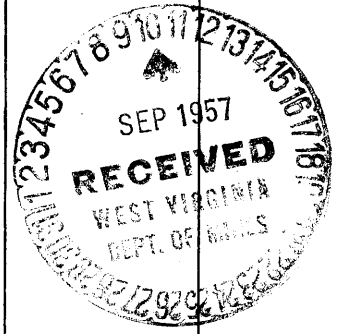
Company F.G. Bish
Address 228 Carr Avenue, Clarkburg, W. Va.
Farm Susan Madden Acres 12 1/2
Location (waters) _____
Well No. 1 Elev. 937
District Eagle County Harrison
The surface of tract is owned in fee by E. K. Towles
Address Lumberport, W. Va.
Mineral rights are owned by Madison Heins, E. K. Towles
Address Clarkburg, W. Va.
Drilling commenced _____
Drilling completed December 1911
Date Shot _____ From _____ To _____
With _____

Casing and Tubing	Used in Drilling	Left in Well	Packers
Size			Kind of Packer
16			
13			Size of
10 1/8			Depth set
3			Perf. top
2			Perf. bottom
Liners Used			Perf. top
			Perf. bottom

Open Flow _____ /10ths Water in _____ Inch
_____ /10ths Merc. in _____ Inch
Volume _____ Cu. Ft.
Rock Pressure _____ lbs. _____ hrs.
Oil _____ bbls., 1st 24 hrs.
Fresh water _____ feet _____ feet
Salt water _____ feet _____ feet

CASING CEMENTED _____ SIZE 40 No. Ft. _____ Date
through Pgh. coal
COAL WAS ENCOUNTERED AT 70 FEET _____ INCHES
" " " 78 Feet- _____ INCHES
" " " _____ FEET _____ INCHES
" " " _____ FEET _____ INCHES

Formation	Color	Hard or Soft	Top	Bottom	Oil, Gas or Water	Depth Found	Remarks
Coal	<u>Pettis Gray</u>		70 Feet-	78 Feet-			
Little Dunkard-			475 Feet-	495 Feet-			
Big Dunkard-			620 Feet-	670 Feet-			
Gas Sand-			780 Feet-	830 Feet-			
First Salt Sand-			850 Feet-	950 Feet-			
Second Salt Sand-			955 Feet-	1125 Feet-			
Little Line Sand-			1390 Feet-	1402 Feet-			
Pencil Sand-			1402 Feet-	1437 Feet-			
Big Line Sand-			1437 Feet-	1515 Feet-			
Big Injun-			1515 Feet-	1580 Feet-			
quaw-			1590 Feet-	1605 Feet-			
ents-			1940 Feet-	1970 Feet-	1950 Feet-		Gas
0 Ft.,-			1990 Feet-	2095 Feet-	1995 Feet-		Gas
0 Ft.,-			2120 Feet-	2165 Feet-			



Formation	Color	Hard or Soft	Top	Bottom	Oil, Gas or Water	Depth Found	Remarks
Gordon Stray- Gordon Sand-			2240 Feet-	2260 Feet-	Oil-	2309 Feet-	Total Depth-
			2304 Feet-		2317 Feet-	2326 Feet-	

Date Sept 7, 19 57

APPROVED [Signature], Owner

By _____ (Title)