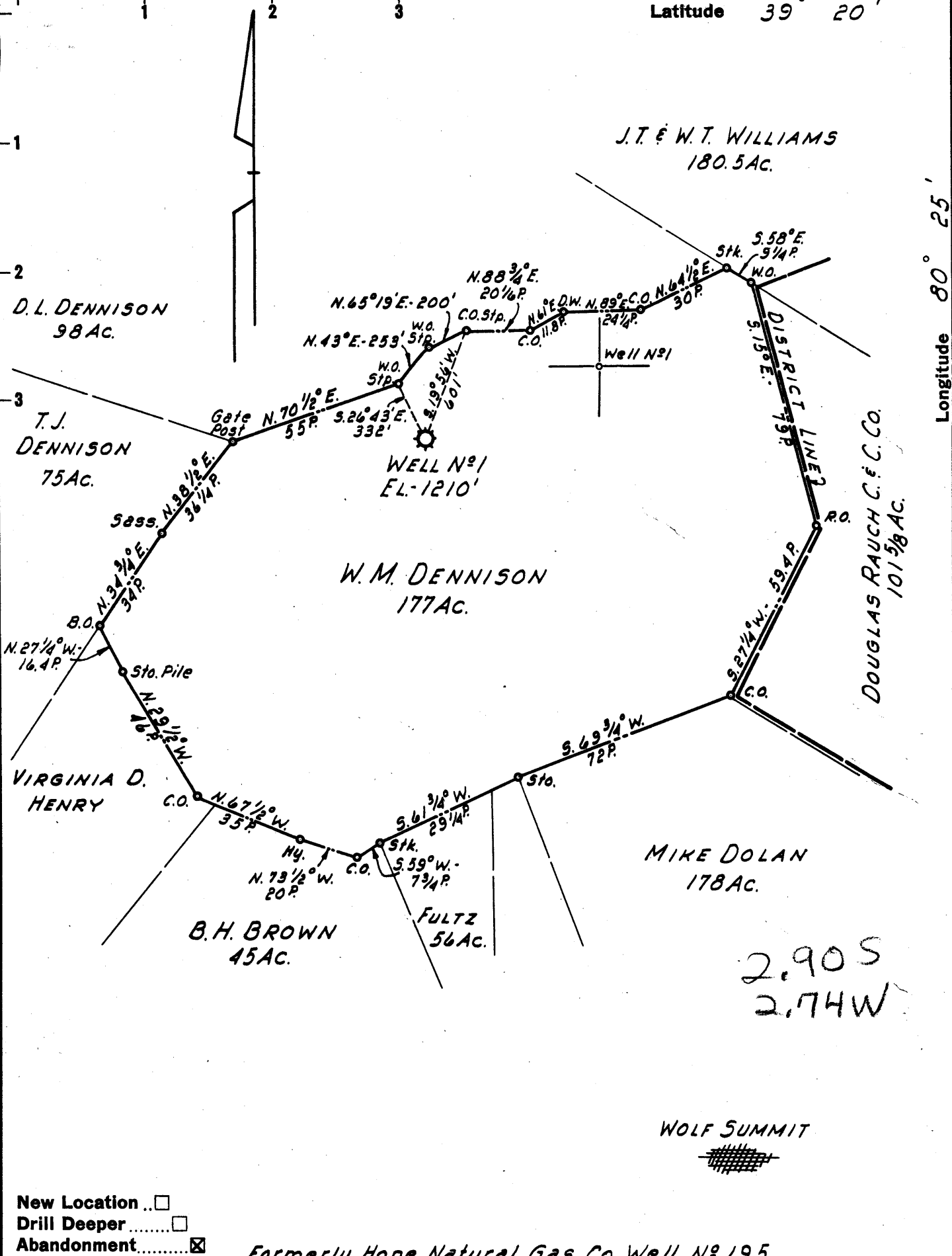


Latitude 39° 20'

Longitude 80° 25'



- New Location ..
- Drill Deeper ..
- Abandonment ..

Formerly Hope Natural Gas Co. Well N° 195

Company	LURAY LAND INC.		
Address	POINT PLEASANT, WEST VA.		
Farm	W.M. DENNISON		
Tract	Acres	177	Lease No.
Well (Farm) No.	1	Serial No.	
Elevation (Spirit Level)	1210'		
Quadrangle	CLARKSBURG		
County	HARRISON	District	TENMILE
Engineer	H.P. SUTER		
Engineer's Registration No.	1805		
File No.	Drawing No.		
Date	4 JUNE 1959	Scale	1" = 40 POLES

STATE OF WEST VIRGINIA  
 DEPARTMENT OF MINES  
 OIL AND GAS DIVISION  
 CHARLESTON

**WELL LOCATION MAP**  
 FILE NO. HAR-1722-A

+ Denotes location of well on United States Topographic Maps, scale 1 to 62,500, latitude and longitude lines being represented by border lines as shown.

- Denotes one inch spaces on border line of original tracing.



1601

STATE OF WEST VIRGINIA  
DEPARTMENT OF MINES  
OIL AND GAS DIVISION

WELL RECORD

Oil or Gas Well \_\_\_\_\_ (KIND)

Quadrangle Clarksburg  
 Permit No. 1777A  
 Company Hope Natural Gas Company  
 Address Clarksburg, West Virginia  
 Farm W. M. Dennison Acres 177  
 Location (waters) \_\_\_\_\_  
 Well No. 195 (Hope) Elev. 1210  
 District Ten Mile County Harrison  
 The surface of tract is owned in fee by \_\_\_\_\_  
 Address \_\_\_\_\_  
 Mineral rights are owned by \_\_\_\_\_  
 Address \_\_\_\_\_  
 Drilling commenced June 5, 1900  
 Drilling completed July 11, 1900  
 Date Shot 7-5-21 From Fifth To \_\_\_\_\_  
11-16-38 From Fifth  
 With \_\_\_\_\_  
 Open Flow \_\_\_\_\_ /10ths Water in \_\_\_\_\_ Inch  
 \_\_\_\_\_ /10ths Merc. in \_\_\_\_\_ Inch  
 Volume \_\_\_\_\_ Cu. Ft.  
 Rock Pressure \_\_\_\_\_ lbs. \_\_\_\_\_ hrs.  
 Oil \_\_\_\_\_ bbls., 1st 24 hrs.  
 WELL ACIDIZED \_\_\_\_\_  
 WELL FRACTURED \_\_\_\_\_

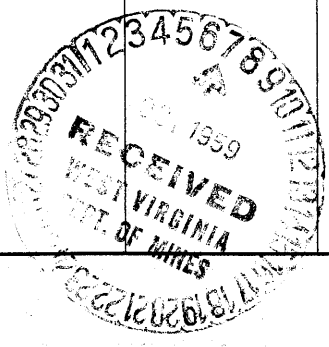
Casing and Tubing	Used in Drilling	Left in Well	Packers
Size			Kind of Packer
16.			
13.			
10.	375'	Pulled	Size of
8 1/4	814'	814'	
6 5/8	1748'	1748'	Depth set
5 3/16	2487'4"	2487'4"	
* 2	2678'	<del>2678'</del> Pulled	Perf. top
2	2727'2"	Pulled	Perf. bottom
3	67'7"	Pulled	Perf. top
Liners Used			Perf. bottom

CASING CEMENTED \_\_\_\_\_ SIZE \_\_\_\_\_ No. Ft. \_\_\_\_\_ Date \_\_\_\_\_

COAL WAS ENCOUNTERED AT \_\_\_\_\_ FEET \_\_\_\_\_ INCHES  
 \_\_\_\_\_ FEET \_\_\_\_\_ INCHES FEET \_\_\_\_\_ INCHES  
 \_\_\_\_\_ FEET \_\_\_\_\_ INCHES FEET \_\_\_\_\_ INCHES

RESULT AFTER TREATMENT \_\_\_\_\_  
 ROCK PRESSURE AFTER TREATMENT \_\_\_\_\_  
 Fresh Water \_\_\_\_\_ Feet \_\_\_\_\_ Salt Water \_\_\_\_\_ Feet \_\_\_\_\_

Formation	Color	Hard or Soft	Top	Bottom	Oil, Gas or Water	Depth	Remarks
Pittsburgh Coal			300	306			
Dunkard Sand			806	870			
Salt Sand			1400	1480			
Injun Sand			1720	1780			
Fifty Foot Sand			2220	2245			
Gordon			2401	2460			
Fifth Sand			2663	2669	Gas		
Total Depth				2678			
Deeper				3420			
Now				2697			



MAR 26 1960

Formation	Color	Hard or Soft	Top	Bottom	Oil, Gas or Water	Depth Found	Remarks

May 29,

59

Date \_\_\_\_\_, 19

LuRay Land, Inc.

APPROVED

Owner

By *Byron M. Finch*  
 By **Byron M. Finch** (Title) **Consultant**