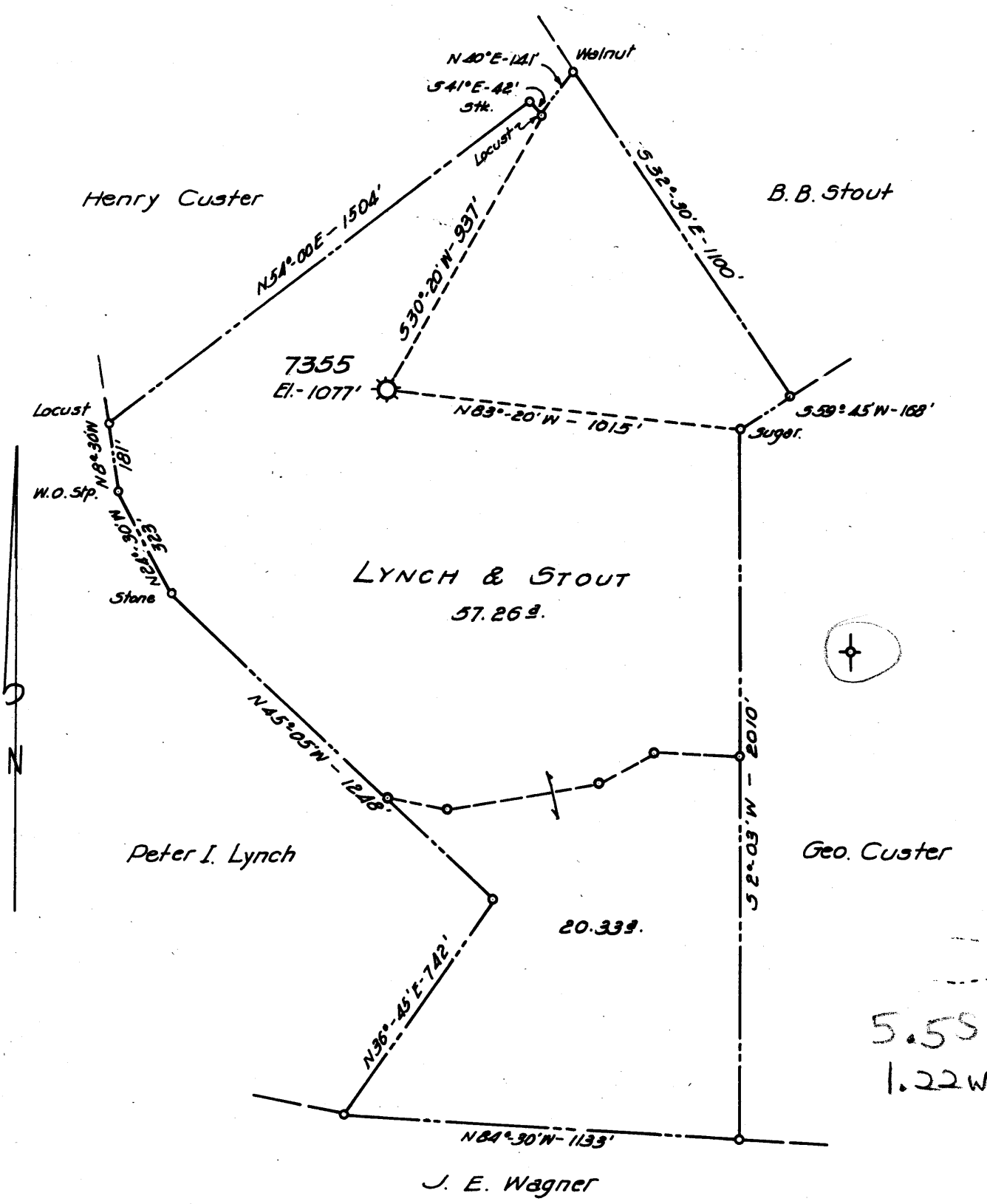


Latitude 39° 20'

Longitude 80° 20'



New Location   
 Drill Deeper   
 Abandonment  7355

FORMERLY H.N.G.CO. WELL N° 7355

Company A. M. SNIDER  
 Address HUNDRED, W. VA.  
 Farm LYNCH & STOUT  
 Tract \_\_\_\_\_ Acres 77.59 Lease No. 44577  
 Well (Farm) No. \_\_\_\_\_ Serial No. 7355  
 Elevation (Spirit Level) 1077'  
 Quadrangle CLARKSBURG  
 County HARRISON District CLARK  
 Engineer HENRY A. HAIN  
 Engineer's Registration No. 3150  
 File No. AMS-40-60 Drawing No. \_\_\_\_\_  
 Date MAY 12, 1960 Scale 1" = 400'

STATE OF WEST VIRGINIA  
 DEPARTMENT OF MINES  
 OIL AND GAS DIVISION  
 CHARLESTON

**WELL LOCATION MAP**  
 FILE NO. HAR-1751-A

+ Denotes location of well on United States Topographic Maps, scale 1 to 62,500, latitude and longitude lines being represented by border lines as shown.  
 - Denotes one inch spaces on border line of original tracing.



1639

STATE OF WEST VIRGINIA  
DEPARTMENT OF MINES  
OIL AND GAS DIVISION

Quadrangle Clarkburg 5C  
Permit No. 1751A

WELL RECORD

Oil or Gas Well (GAS)

Company A. M. Snider  
Address Clarksburg W. Va.  
Farm Lynn & Stout Acres 77 58  
Location (waters) West Fork River  
Well No. 7355 Elev. 1077  
District Clark County Harrison  
The surface of tract is owned in fee by L. F. Bennet  
It. 1 Address Clarksburg  
Mineral rights are owned by W. Va.  
Address \_\_\_\_\_  
Drilling commenced Dec 9 1918  
Drilling completed Feb 5 1919  
Date Shot \_\_\_\_\_ From \_\_\_\_\_ To \_\_\_\_\_  
With \_\_\_\_\_  
Open Flow \_\_\_\_\_ /10ths Water in \_\_\_\_\_ Inch  
\_\_\_\_\_ /10ths Merc. in \_\_\_\_\_ Inch  
Volume \_\_\_\_\_ Cu. Ft.  
Rock Pressure \_\_\_\_\_ lbs. \_\_\_\_\_ hrs.  
Oil \_\_\_\_\_ bbls., 1st 24 hrs.  
WELL ACIDIZED \_\_\_\_\_  
WELL FRACTURED \_\_\_\_\_

Casing and Tubing	Used in Drilling	Left in Well	Packers
Size			Kind of Packer
16			
13			Bottom
10			Size of <u>7 7/8</u>
8 3/4	<u>965</u>	<u>965</u>	
6 5/8	<u>1429</u>	<u>1429</u>	Depth set <u>2063</u>
5 3/16	<u>2063</u>	<u>2063</u>	
3			Perf. top _____
2			Perf. bottom _____
Liners Used			Perf. top _____
			Perf. bottom _____

CASING CEMENTED \_\_\_\_\_ SIZE \_\_\_\_\_ No. Ft. \_\_\_\_\_ Date \_\_\_\_\_

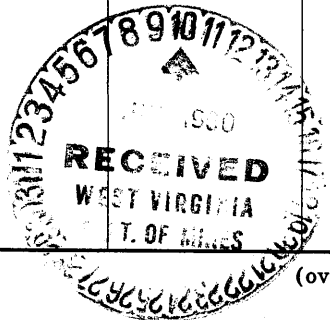
COAL WAS ENCOUNTERED AT \_\_\_\_\_ FEET \_\_\_\_\_ INCHES  
\_\_\_\_\_ FEET \_\_\_\_\_ INCHES \_\_\_\_\_ FEET \_\_\_\_\_ INCHES  
\_\_\_\_\_ FEET \_\_\_\_\_ INCHES \_\_\_\_\_ FEET \_\_\_\_\_ INCHES

RESULT AFTER TREATMENT \_\_\_\_\_

ROCK PRESSURE AFTER TREATMENT \_\_\_\_\_

Fresh Water \_\_\_\_\_ Feet Salt Water \_\_\_\_\_ Feet

Formation	Color	Hard or Soft	Top	Bottom	Oil, Gas or Water	Depth	Remarks
Little Dunkard			290	320			
Big Dunkard			350	385			
Gas sand			500	575			
Salt sand			590	710			
Baxon sand			1085	1100			
Little line			1346	1375			
Big line			1390	1445			
Injin sand			1445	1565			
Squaw sand			1570	1585			
Quartz sand			1885	1925			
Fifty foot sand			1964	2018	Gas. 1965		
Forty foot sand			2022	2100			
Gray sand			2246	2256			
London sand			2260	2272			
Port. sand			2289	2323			
1ft. sand			2383	2407	Gas 2390		
Secley			3072	3085	Gas 3078		
at depth				3102			



(over)