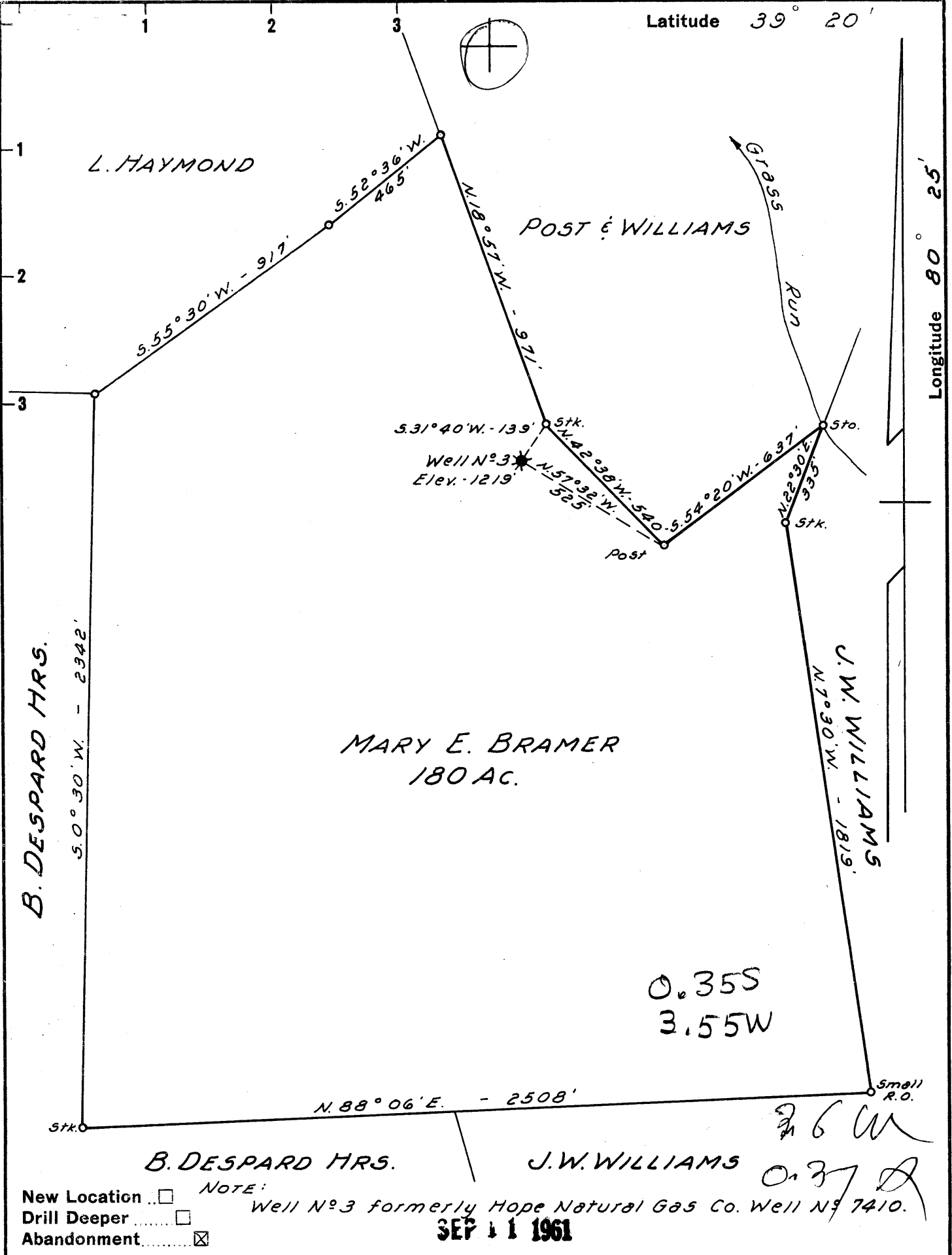


Latitude 39° 20'

Longitude 80° 25'



New Location   
 Drill Deeper   
 Abandonment

**NOTE:**  
 Well No. 3 formerly Hope Natural Gas Co. Well No. 7410.  
**SEP 11 1961**

Company RICHARD JACKSON INC.  
 Address 614 E. MAIN ST. CLARKSBURG, W. VA.  
 Farm MARY E. BRAMER  
 Tract \_\_\_\_\_ Acres 180 Lease No. \_\_\_\_\_  
 Well (Farm) No. 3 Serial No. \_\_\_\_\_  
 Elevation (Spirit Level) 1219'  
 Quadrangle CLARKSBURG  
 County HARRISON District TEN MILE  
 Engineer John W. Hamilton  
 Engineer's Registration No. 2274  
 File No. \_\_\_\_\_ Drawing No. \_\_\_\_\_  
 Date MAY 14, 1961 Scale 1" = 400'

STATE OF WEST VIRGINIA  
 DEPARTMENT OF MINES  
 OIL AND GAS DIVISION  
 CHARLESTON

**WELL LOCATION MAP**  
 FILE NO. HAR-1784-A

K&E 158 IMPERIAL TRACING CLOTH T.M. 68006  
 (Hope 7410) MARY E. BRAMER No. 3 - RICHARD JACKSON, INC. - HAR-1784-A



1854

STATE OF WEST VIRGINIA  
DEPARTMENT OF MINES  
OIL AND GAS DIVISION

Quadrangle Clarksburg  
Permit No. 1784-A

WELL RECORD

Oil or Gas Well \_\_\_\_\_  
(KIND)

Company Richard Jackson, Inc.  
Address 614 E. Main Street, Clarksburg, W. Va.  
Farm Mary E. Bramor Acres 180  
Location (waters) Grass Run  
Well No. 3 (Hope 7410) Elev. 1219'  
District Ten Mile County Harrison  
The surface of tract is owned in fee by Mary E. Bramor  
Address \_\_\_\_\_  
Mineral rights are owned by Same  
Address \_\_\_\_\_

Casing and Tubing	Used in Drilling	Left in Well	Packers
Size			Kind of Packer
16			
13			
10	294	294	Size of
8 1/4	1142	1142	
6 5/8	2004	2004	Depth set
5 3/16			
3			Perf. top
2	2827	2827	Perf. bottom
Liners Used			Perf. top
			Perf. bottom

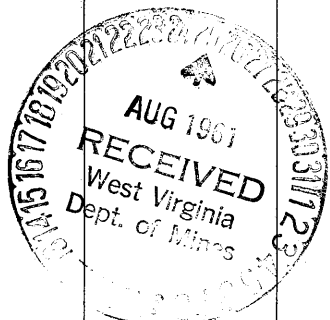
Drilling commenced \_\_\_\_\_  
Drilling completed \_\_\_\_\_  
Date Shot \_\_\_\_\_ From \_\_\_\_\_ To \_\_\_\_\_  
With \_\_\_\_\_  
Open Flow \_\_\_\_\_ /10ths Water in \_\_\_\_\_ Inch  
\_\_\_\_\_ /10ths Merc. in \_\_\_\_\_ Inch  
Volume \_\_\_\_\_ Cu. Ft.  
Rock Pressure \_\_\_\_\_ lbs. \_\_\_\_\_ hrs.  
Oil \_\_\_\_\_ bbls., 1st 24 hrs.  
WELL ACIDIZED \_\_\_\_\_  
WELL FRACTURED \_\_\_\_\_

CASING CEMENTED \_\_\_\_\_ SIZE \_\_\_\_\_ No. Ft. \_\_\_\_\_ Date \_\_\_\_\_

COAL WAS ENCOUNTERED AT \_\_\_\_\_ FEET \_\_\_\_\_ INCHES  
\_\_\_\_\_ FEET \_\_\_\_\_ INCHES \_\_\_\_\_ FEET \_\_\_\_\_ INCHES  
\_\_\_\_\_ FEET \_\_\_\_\_ INCHES \_\_\_\_\_ FEET \_\_\_\_\_ INCHES

RESULT AFTER TREATMENT \_\_\_\_\_  
ROCK PRESSURE AFTER TREATMENT \_\_\_\_\_  
Fresh Water \_\_\_\_\_ Feet \_\_\_\_\_ Salt Water \_\_\_\_\_ Feet \_\_\_\_\_

Formation	Color	Hard or Soft	Top	Bottom	Oil, Gas or Water	Depth	Remarks
Pitt. Coal			678	685			
Gas			800				
Little Dunkard			1025	1087			
Big Dunkard			1081	1146			
1st Salt			1356	1425			
2nd Salt			1465	1505			
3rd Salt			1538	1575			
Maxon Sand			1932	1965			
Gas			1957				
Big Lime			1995	2045			
Big Injun			2045	2150			
Gas			2110				
Fifty foot			2587	2615			
Gas				2602			
Thirty Foot			2680	2690			
Oil			2685				
Stray Sand			2700	2713			
Gordon Sand			2745	2812			
Gas			2779	2783			
Oil			2792	2804			
Fourth Sand			2815	2862			
Drilled to				2865			
Filled to				2827			



(over)

APR 6 1962