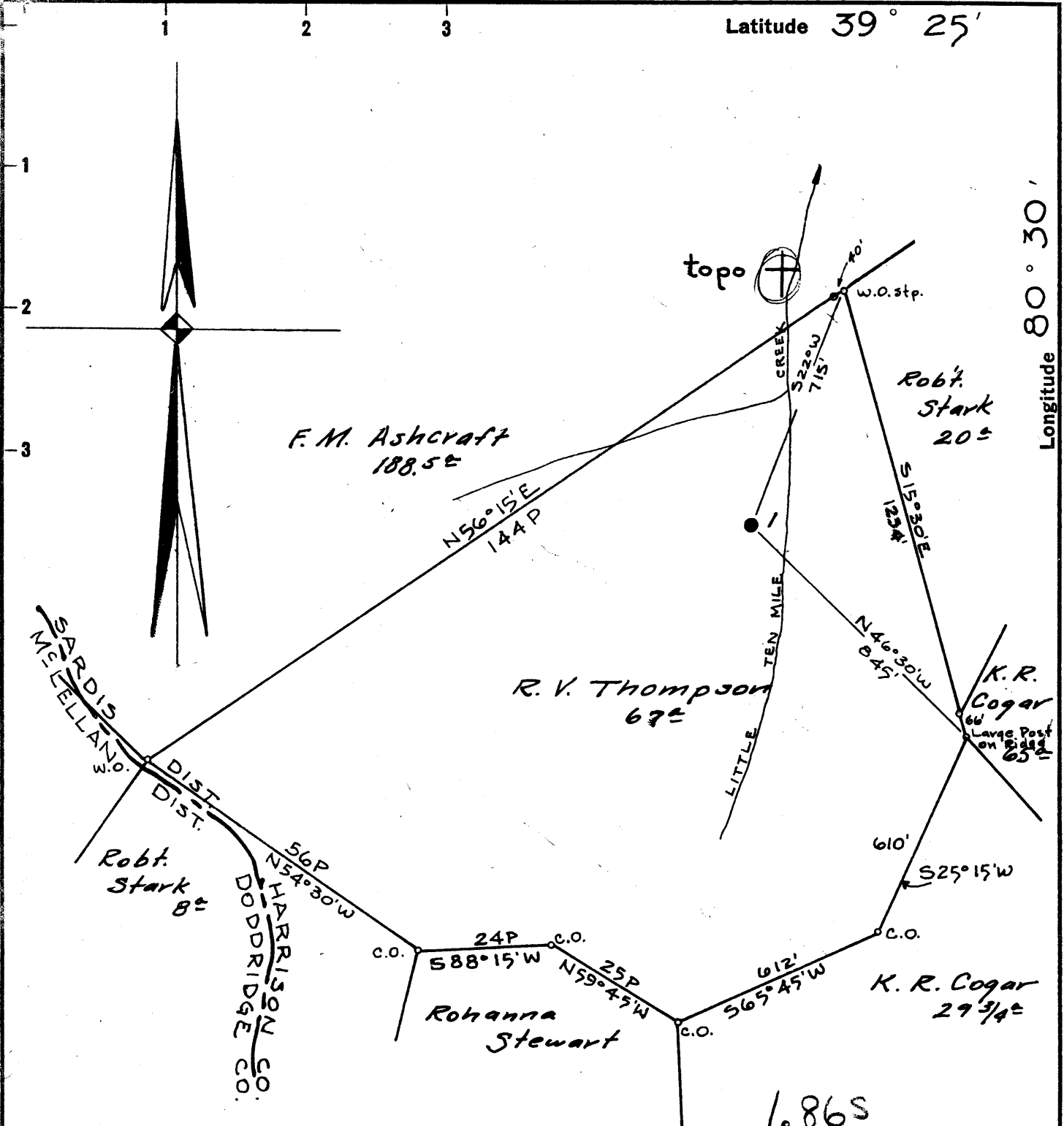


Latitude 39° 25'

Longitude 80° 30'



Surface Owner: Truman E. Gore,  
% Gore Hotel,  
Clarksburg, W.Va.

Coal: Mountaineer Coal Co.,  
Box 1632, Fairmont, W.Va.

1.86S  
1.95W

1.98W

1.92

New Location   
 Drill Deeper   
 Abandonment

OCT 16 1961

MAP N39 S5 E5

Company SOUTH PENN OIL CO.  
 Address PARKERSBURG, W.Va.  
 Farm R.V. Thompson  
 Tract \_\_\_\_\_ Acres 67 Lease No. 28444  
 Well (Farm) No. 1 Serial No. \_\_\_\_\_  
 Elevation (Spirit Level) 1239.93' ground  
 Quadrangle CENTERPOINT  
 County HARRISON District SARDIS  
 Engineer A.C. Hillert  
 Engineer's Registration No. 2534  
 File No. 1015 Drawing No. \_\_\_\_\_  
 Date Sept. 26, 1961 Scale 1" = 400'

STATE OF WEST VIRGINIA  
 DEPARTMENT OF MINES  
 OIL AND GAS DIVISION  
 CHARLESTON

**WELL LOCATION MAP**  
 FILE NO. HAR-1790-A

+ Denotes location of well on United States Topographic Maps, scale 1 to 62,500, latitude and longitude lines being represented by border lines as shown.

- Denotes one inch spaces on border line of original tracing.



1608

STATE OF WEST VIRGINIA  
DEPARTMENT OF MINES  
OIL AND GAS DIVISION

*Center Point*

Quadrangle \_\_\_\_\_

Permit No. 1790-A

WELL RECORD

Oil or Gas Well \_\_\_\_\_ (KIND)

Company SOUTH PENN OIL COMPANY  
Address P. O. Box 1280, Parkersburg, W. Va.  
Farm R. V. Thompson Acres 67  
Location (waters) Little Ten Mile Creek  
Well No. 1 Elev. 1239.93  
District Sardis County Harrison  
The surface of tract is owned in fee by Irwin E. Gore  
Address Box 506, Clarksburg, W. Va.  
Mineral rights are owned by W. G. Stathers, et al.  
Address Box 352, Clarksburg, W. Va.

Casing and Tubing	Used in Drilling	Left in Well	Packers
Size			Kind of Packer
16			
13			
10	120'	None	Size of
8 1/2	1500'	1500'	
6 3/4	2422'	2422'	Depth set
6			
3			Perf. top
2			Perf. bottom
Liners Used			Perf. top
			Perf. bottom

Drilling commenced Sept. 10, 1903  
Drilling completed Nov. 2, 1903  
Date Shot 4-19 From \_\_\_\_\_ To \_\_\_\_\_  
With 4-22-27 40 Qts. & 60 Qts.

Open Flow \_\_\_\_\_ /10ths Water in \_\_\_\_\_ Inch  
\_\_\_\_\_ /10ths Merc. in \_\_\_\_\_ Inch  
Volume \_\_\_\_\_ Cu. Ft.  
Rock Pressure \_\_\_\_\_ lbs. \_\_\_\_\_ hrs.  
Oil \_\_\_\_\_ bbls., 1st 24 hrs.

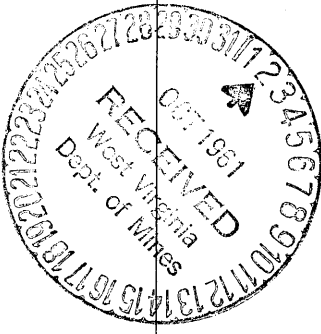
CASING CEMENTED \_\_\_\_\_ SIZE \_\_\_\_\_ No. Ft. \_\_\_\_\_ Date \_\_\_\_\_

COAL WAS ENCOUNTERED AT 975 FEET 60 INCHES  
\_\_\_\_ FEET \_\_\_\_\_ INCHES \_\_\_\_\_ FEET \_\_\_\_\_ INCHES  
\_\_\_\_ FEET \_\_\_\_\_ INCHES \_\_\_\_\_ FEET \_\_\_\_\_ INCHES

WELL ACIDIZED \_\_\_\_\_  
WELL FRACTURED \_\_\_\_\_

RESULT AFTER TREATMENT \_\_\_\_\_  
ROCK PRESSURE AFTER TREATMENT \_\_\_\_\_  
Fresh Water \_\_\_\_\_ Feet Salt Water \_\_\_\_\_ Feet

Formation	Color	Hard or Soft	Top	Bottom	Oil, Gas or Water	Depth	Remarks
Conductor				16			
Pittsburgh Coal			975	980			
Dunkard Sand			1500	1590			
Salt Sand			1885	1960			
Fencil Cave			2205	2212			
Big Line			2212	2277			
Big Injun			2277	2422			
Fifty Foot			2890	2920			
Stray Sand			3055	3076			
Gordon			3091	3120	Oil	3102	
TOTAL DEPTH				3132			



Formation	Color	Hard or Soft	Top	Bottom	Oil, Gas or Water	Depth Found	Remarks

Date September 29, 1961, 19

APPROVED SOUTH PENN OIL COMPANY, Owner

By George W. Wilman  
**George W. Wilman, Land Agent**