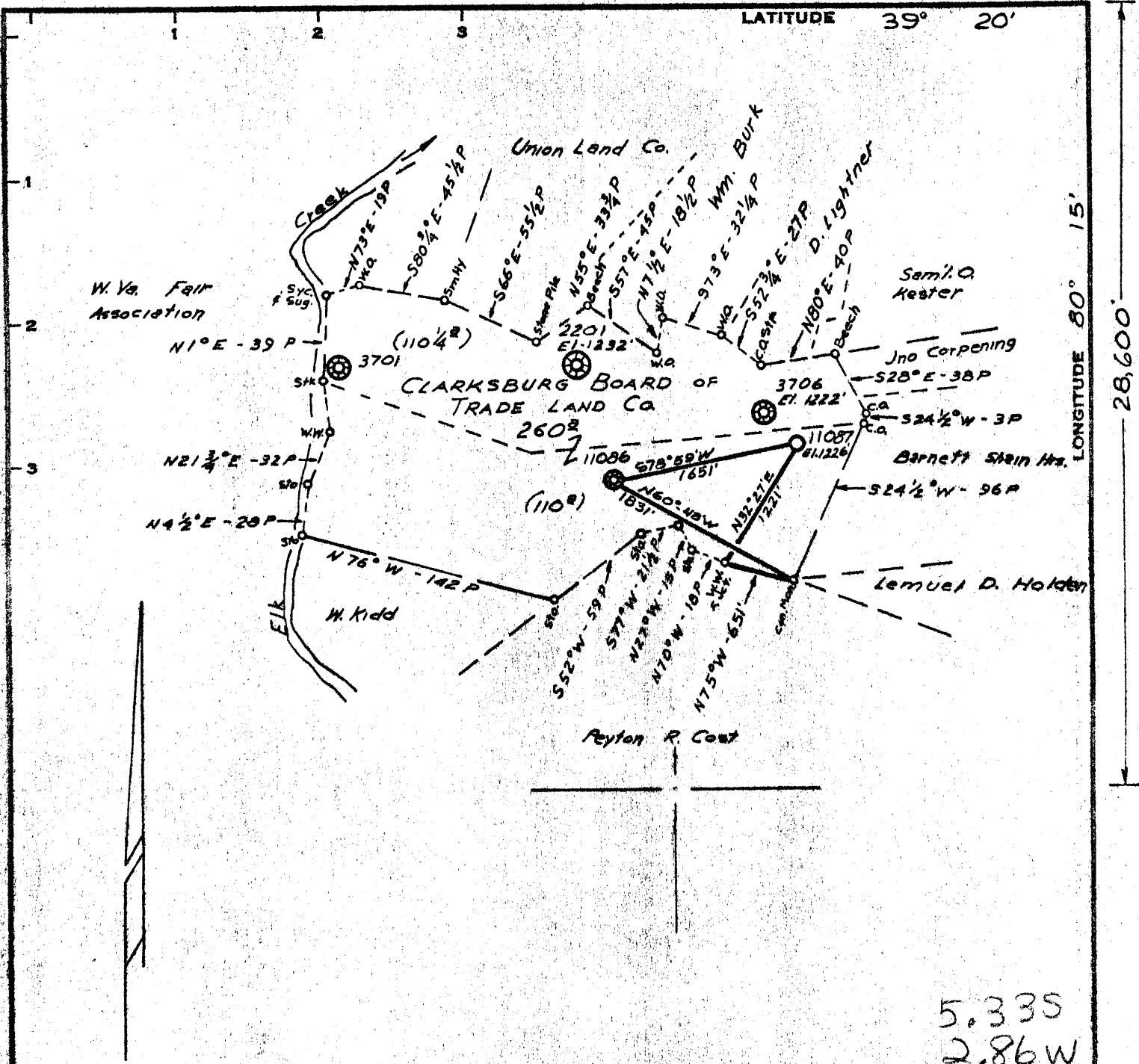


15,150'



5.335  
2.86W

Minimum Error of Closure 1' IN 200'  
 Source of Elevation CONSOLIDATED GAS SUPPLY CORP. WELL  
N<sup>o</sup> 11086 ELEVATION 1105'  
 "I, the undersigned, hereby certify that this map is correct to the best of my knowledge and belief and shows all the information required by paragraph 6 of the rules and regulations of the oil and gas section of the mining laws of West Virginia."

- New Location
- Drill Deeper
- Abandonment

MAP SHEET 43 S-14, E-17 FB. 1577 Pgs 13-15

Company CONSOLIDATED GAS SUPPLY CORP.  
 Address CLARKSBURG, W. VA.  
 Farm C. B. OF T. L. Co.  
 Tract \_\_\_\_\_ Acres 260 Lease No. 77933  
 Well (Farm) No. \_\_\_\_\_ Serial No. 11087  
 Elevation (Spirit Level) 1226'  
 Quadrangle CLARKSBURG SE  
 County HARRISON District CLARK  
 Engineer Jackson M. Jarwell  
 Engineer's Registration No. 2397  
 File No. \_\_\_\_\_ Drawing No. \_\_\_\_\_  
 Date APRIL 4, 1972 Scale 1" = 80 FEET

STATE OF WEST VIRGINIA  
 DEPARTMENT OF MINES  
 OIL AND GAS DIVISION  
 CHARLESTON

**WELL LOCATION MAP**  
 FILE NO. Starr-1880 (A)

+ Denotes location of well on United States Topographic Maps, scale 1 to 62,500, latitude and longitude lines being represented by border lines as shown.  
 — Denotes one inch spaces on border line of original tracing.

