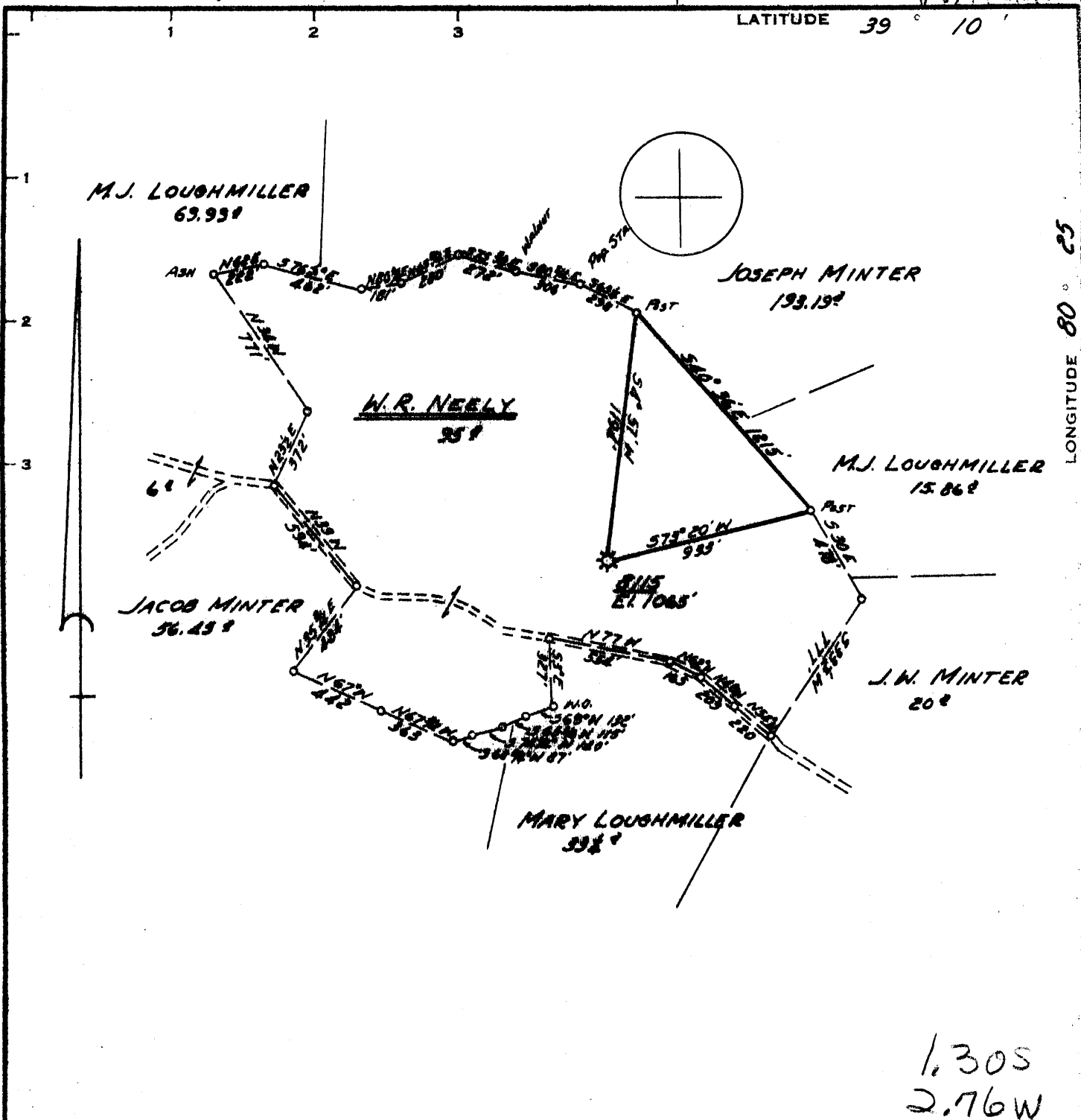


LATITUDE 39° 10'

LONGITUDE 80° 25'

6900'



Minimum Error of Closure 1' IN 200'
 Source of Elevation ROAD FORK ELEVATION 1008'
 "I, the undersigned, hereby certify that this map is correct to the best of my knowledge and belief and shows all the information required by paragraph 6 of the rules and regulations of the oil and gas section of the mining laws of West Virginia."

- New Location
- Drill Deeper
- Abandonment

1/8/74 MAP SHEET 58-522 E0 F.B. 725 Pg. 6

Company CONSOLIDATED GAS SUPPLY CORP.
 Address CLARKSBURG W. VA.
 Farm W.R. NEELY
 Tract Acres 95 Lease No. 52898
 Well (Farm) No. 8115 Serial No. 8115
 Elevation (Spirit Level) 1065'
 Quadrangle WESTON WC
 County HARRISON District UNION
 Engineer JACKMAN M. JARVIS
 Engineer's Registration No. 2097
 File No. _____ Drawing No. _____
 Date JAN. 2, 1974 Scale 1" = 40 FEET

STATE OF WEST VIRGINIA
 DEPARTMENT OF MINES
 OIL AND GAS DIVISION
 CHARLESTON

WELL LOCATION MAP
 FILE NO. HARR-1935-A

+ Denotes location of well on United States Topographic Maps, scale 1 to 62,500, latitude and longitude lines being represented by border lines as shown.

— Denotes one inch spaces on border line of original tracing.

47-093