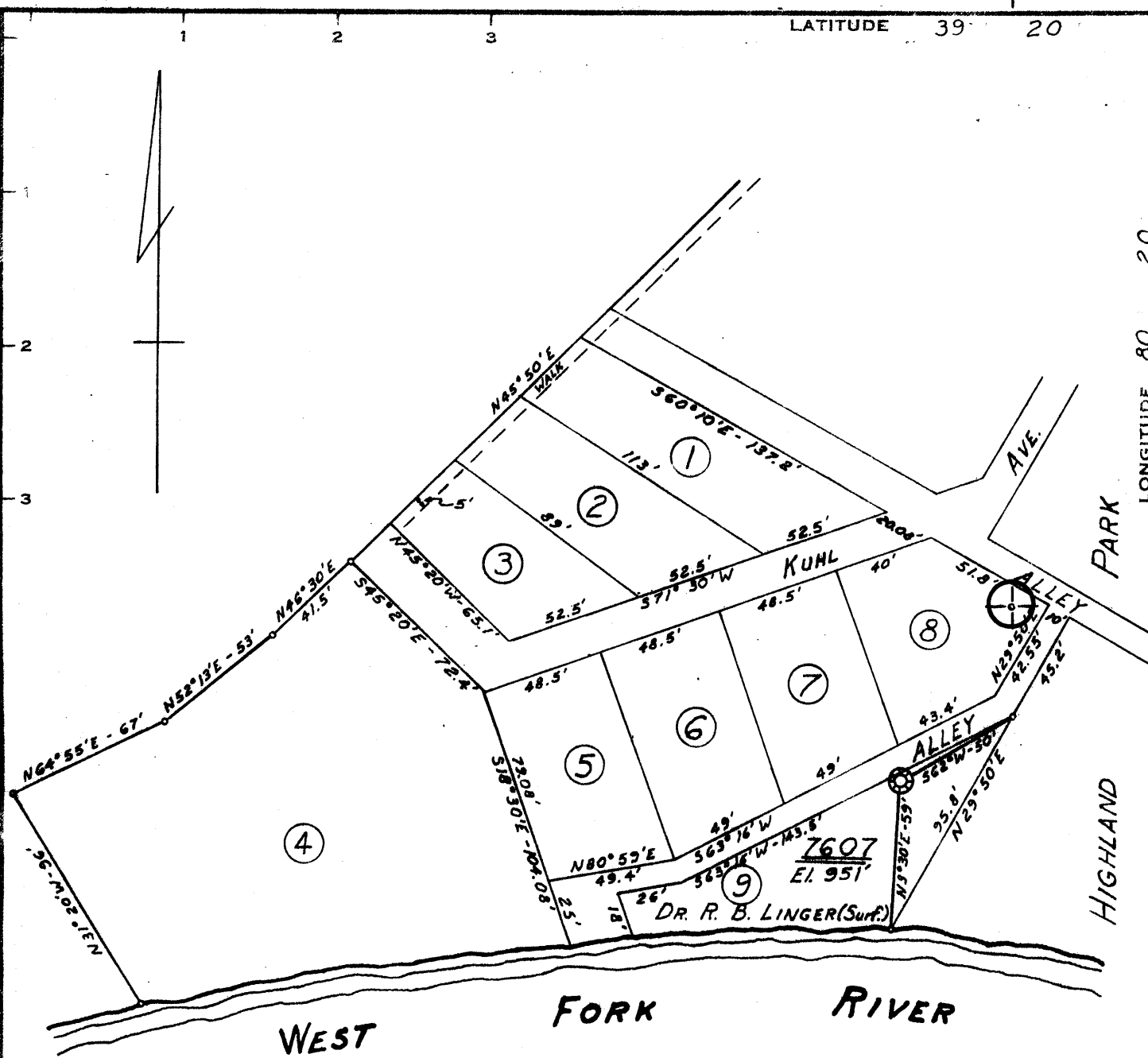


5,000'

LATITUDE 39 20

LONGITUDE 80 20

20,200'



3.85
0.93W

Minimum Error of Closure 1' in 200'
 Source of Elevation Consol. Well No. 7612 El. 1013'
 "I, the undersigned, hereby certify that this map is correct to the best of my knowledge and belief and shows all the information required by paragraph 6 of the rules and regulations of the oil and gas section of the mining laws of West Virginia."

- New Location
- Drill Deeper
- Abandonment *issued 8/13/74*

MAP SH. 44-513E14 F.B. 587, P.9

Company CONSOLIDATED GAS SUPPLY CORP.
 Address CLARKSBURG, W. VA.
 Farm HIGHLAND PARK
 Tract _____ Acres 20 Lease No. 46322
 Well (Farm) No. _____ Serial No. 7607
 Elevation (Spirit Level) 951'
 Quadrangle CLARKSBURG, W. VA. SC
 County HARRISON District CLARK
 Engineer Jackson M. Jarvis
 Engineer's Registration No. 2397
 File No. _____ Drawing No. _____
 Date 8-9-74 Scale 1" = 60'

STATE OF WEST VIRGINIA
 DEPARTMENT OF MINES
 OIL AND GAS DIVISION
 CHARLESTON

WELL LOCATION MAP
 FILE NO. Hex-1954-A

| Denotes location of well on United States Topographic Maps, scale 1 to 62,500, latitude and longitude lines being represented by border lines as shown.

— Denotes one inch spaces on border line of original tracing. **47-033**