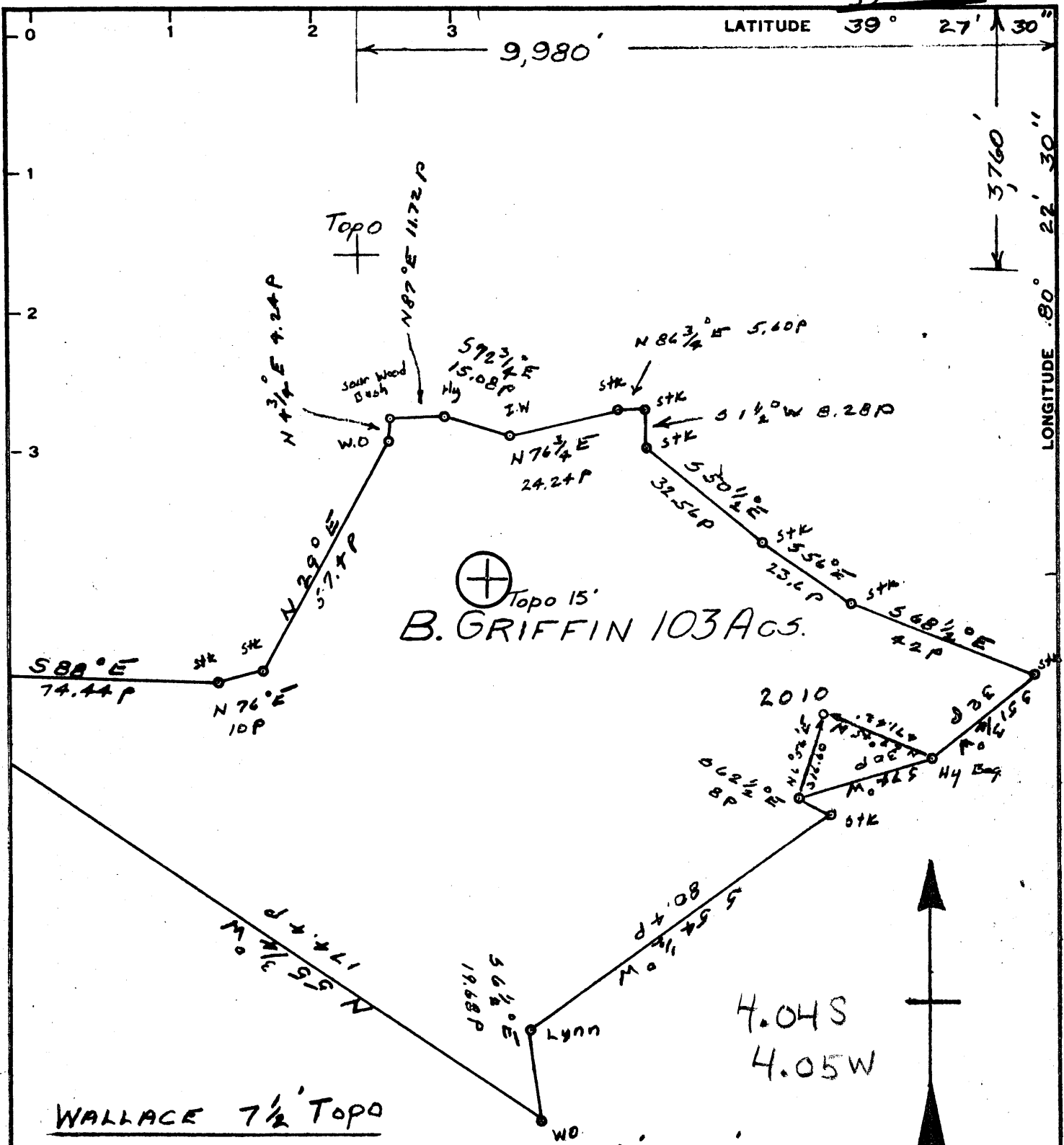


2,18,76



Topo 15'  
B. GRIFFIN 103 ACs.

WALLACE 7 1/2' TOPO

Minimum Error of Closure 1' in 200'  
Source of Elevation U.S.G.S. BM @ OAKDALE

- Fracture
- New Location
- Drill Deeper
- Abandonment  Replug 2/20/78

I, the undersigned, hereby certify that this map is correct to the best of my knowledge and belief and shows all the information required by paragraph 6 of the rules and regulations of the oil and gas section of the mining laws of West Virginia.

Signed: *B. J. McComley*  
Squares: N 1 E 12 W

Map No.

Fairmont Operations  
Company Consolidation Coal Company  
Address Box 1632 Fairmont, W. Va. 26554  
Farm B. F. Griffin  
Tract \_\_\_\_\_ Acres 103 Lease No. 4140-26  
Well (Farm) No. 2-14 Serial No. NC  
Elevation (Spirit Level) Clarksburg 15'  
Quadrangle Wallace 7 1/2'  
County Harrison District Eagle  
Engineer *B. J. McComley*  
Engineer's Registration No. 2067  
File No. \_\_\_\_\_ Drawing No. \_\_\_\_\_  
Date 11/26/75 Scale 1" = 500'

STATE OF WEST VIRGINIA  
DEPARTMENT OF MINES  
OIL AND GAS DIVISION  
CHARLESTON

WELL LOCATION MAP  
FILE NO. HAR-1974-A

+ Denotes location of well on United States Topographic Maps, scale 1 to 24,000, latitude and longitude lines being represented by border lines as shown.  
- Denotes one inch spaces on border line of original tracing.

47-033