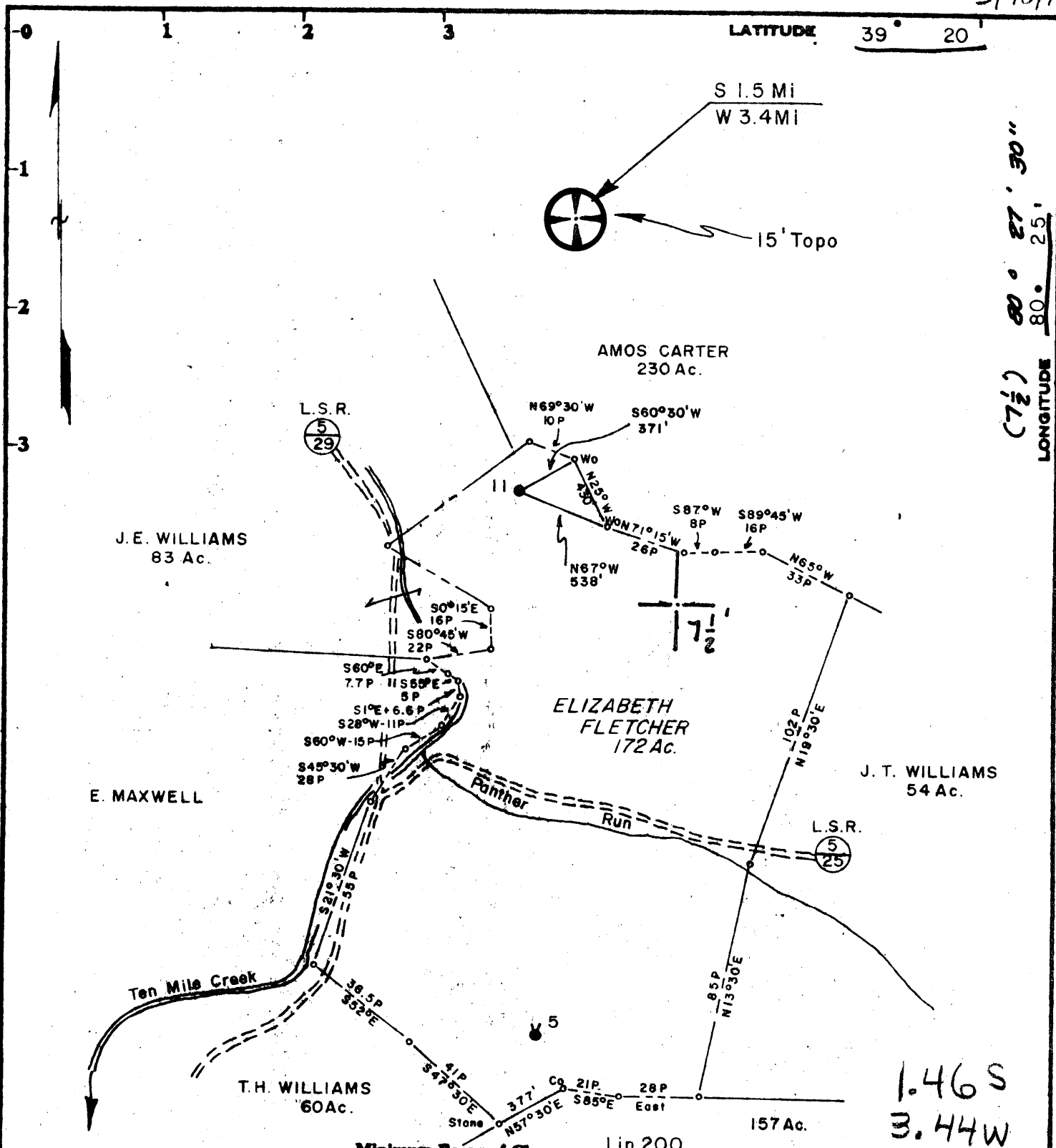


5/18/78



(7 1/2) LONGITUDE 80° 27' 30"

1.46 S  
3.44 W

Minimum Error of Closure 1 in 200  
Source of Elevation USGS BM 121WSM, elev. 1031.40

Surface  
Ralph P. Garner  
Rt. 1, Bristol, W. Va.

I, the undersigned, hereby certify that this map is correct to the best of my knowledge and belief and shows all the information required by paragraph 6 of the rules and regulations of the oil and gas section of the mining laws of West Virginia.

Fracture   
New Location   
Drill Deeper   
Abandonment  5/19/78

Signed: *Curtis A. Lucas*  
Map No. N 29 Squares: N S 10/11 E 8 W

Company	PENNZOIL COMPANY	
Address	P. O. Box 1588, Parkersburg, W. Va. 26101	
Farm	ELIZABETH FLETCHER	
Tract	Acres 172	Lease No. 31212-50
Well (Farm) No.	11	Serial No.
Elevation (Spirit Level)	1191.35	
Quadrangle	CLARKSBURG 15' WOLF SUMMIT 7 1/2'	
County	HARRISON	District TEN MILE
Surveyor	CURTIS A. LUCAS	
Surveyor's Registration No.	275	
File No.	1328	Drawing No.
Date	5-12-78	Scale 1" = 800'

STATE OF WEST VIRGINIA  
DEPARTMENT OF MINES  
OIL AND GAS DIVISION  
CHARLESTON

WELL LOCATION MAP  
FILE NO. HAR-1997-A

+ Denotes location of well on United States Topographic Maps, scale 1 to 62,500, latitude and longitude lines being represented by border lines as shown.

-- Denotes one inch spaces on border line of original tracing.

47-033

BRUNING 44-131 27198