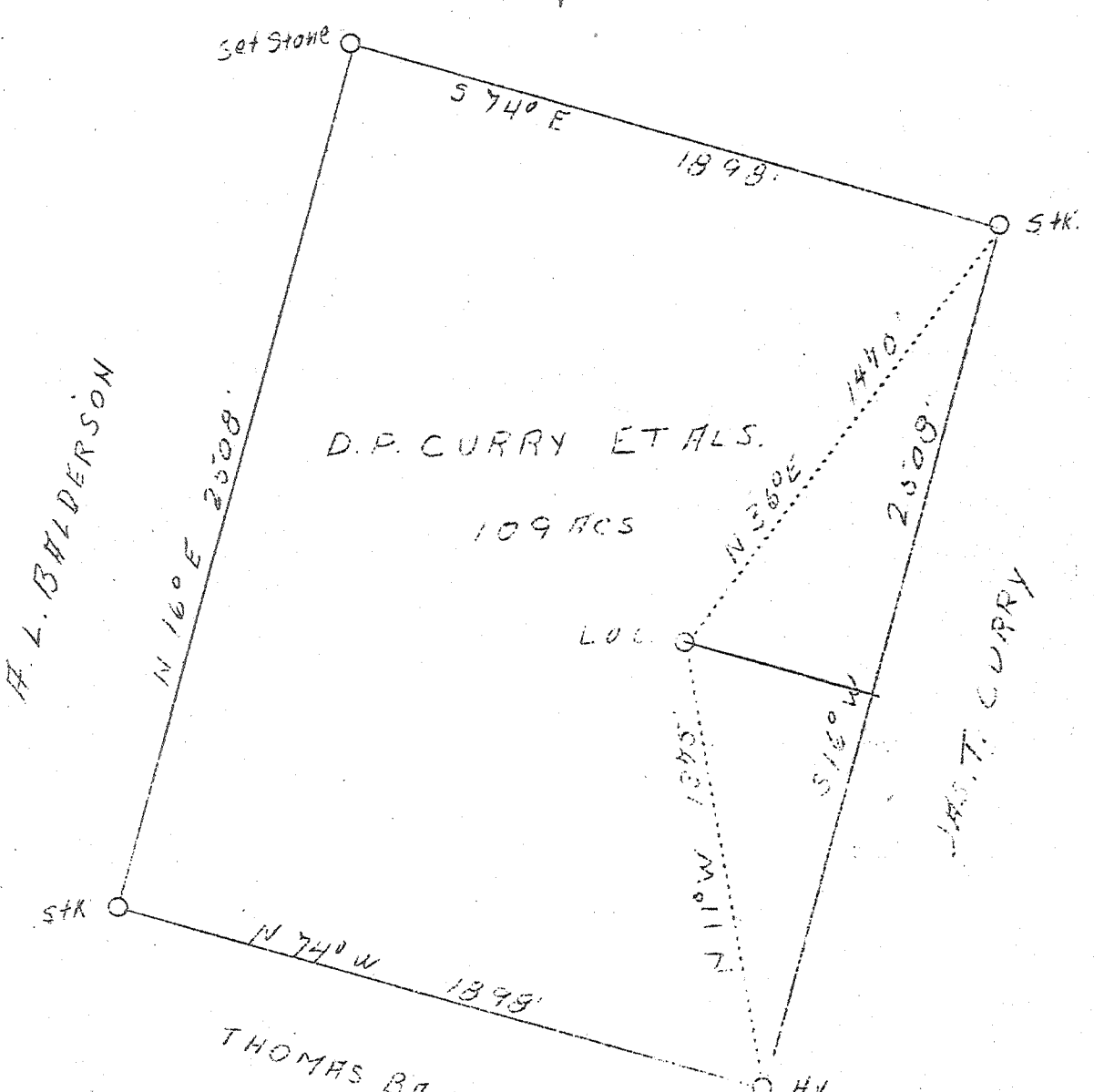


LATITUDE 39° 00'

LONGITUDE 81° 35'

HENRY MORRISON



Permit No. 1-17-39



3.6W
2.13-5

New location

COAL NOT OPERATED

Company Joe Rubin, N.P. Johnston et al
 Address 1900 - 19th St., Parkersburg, W. Va.
 Farm D. P. Curry, et al
 Tract One
 Acres 109
 Lease No. 144
 Well (Farm) No. One
 Elevation (SL) 660.0
 Quadrangle Ripley
 County Jackson
 District Ravenswood
 Engineer C. E. Krebs
 Eng. Reg. No. Nine
 File No. 11597
 Date Jan. 12, 1939
 Scale 1" - 500'

STATE OF WEST VIRGINIA
 Department of Mines
 OIL & GAS DIVISION
 Charleston

WELL LOCATION MAP

File No. JAC-44 43

x Denotes location of well on U. S. Topographic Maps, scale 1 to 62,500, latitude and longitude lines being represented by border lines as shown.

- Denotes one inch spaces on border line of original tracing.

WEST VIRGINIA DEPARTMENT OF MINES

OIL & GAS DIVISION

WELL RECORD

Permit No. Jac-43

Gas Well

Pipley Quad.

CASING & TUBING

Company Gulf-Rubin (No record given on log)
 Address 1900-19th St., Parkersburg, W. Va.
 Farm D. P. Currey, et al ACRES 109
 Location Coan Creek
 Well No. 1 ELEV. 630
 District Ravenswood - Jackson County
 Surface & Mineral D. P. Currey, New Era, W. Va.
 Commenced Jan. 18, 1939
 Completed Apr. 5, 1939 45' of 5" casing cement-
 Date shot 4/5/39 - Depth - ed - 3/30/39
 Open Flow -
 Volume -
 Rock Pressure -
 Water -

Formation Color & Top Base Result Formation Color & Top Base Result

Red		0	100	Black Shale		1449	1515
Blue Slate		100	125	Sand		1515	1519
Blue Shale		125	145	Sandy Shale		1519	1542
Red		145	160	Black Shale		1542	1558
Sand		160	210	Maxon Sand		1558	1600
Slate		210	240	Little Lime		1600	1608
Red		240	250	Big Lime		1608	1680
Slate	blue	250	265	Slate	330	1680	1682
Red		265	295	Sand		1682	1735
Slate		295	310	Slate		1735	1774
Red		310	330	Sand		1774	1810
Blue Slate		330	362	Broken Sand		1810	1850
Red		362	390	Slate & Shells		1850	2162
Slate	blue	390	396	Brown Shale		2162	2190
Red		396	407	Berea		2190	2193
Slate		407	416	Slate & Shells		2193	3374
Sand		416	514	Brown Shale	441	3374	3430
Slate	blue	514	638	Slate & Shells		3430	3670
Sand		638	638	Dark Shale		3670	3720
Slate		655	660	Slate		3720	3805
Pink		660	665	Dark Shale		3805	3870
Blue Slate		665	680	Slate		3870	4440
Red Rock		680	690	Dark Shale		4440	4587
Slate		690	716	Corniferous	463	4587	4705
Sand		716	730	Oriskany Sand		4705	118 ft. Line
Red Rock		730	745				
Blue Slate		745	760				
Red Rock		760	765				
Blue Slate		765	790				
Red Rock		790	805				
Slate		805	831				
Red Rock		831	847				
Blue Slate		847	865				
Red Rock		865	875				
Sandy Lime		875	915				
Red Rock		915	935				
Slate		935	960				
Sand		960	1073				
Slate		1073	1085				
Sand		1085	1096				
Blue Slate		1096	1140				
Sand		1140	1212				
Slate		1212	1300				
Shale		1300	1385				
Sand		1385	1407				
Slate		1407	1419				
Sand		1419	1449				

4587 4705
 660 660
 3927 4045

Vol XVI

Shot 4705.5 - 4721

2534 Mct

Rk press. 1900 lbs.