

~~New Location~~
 Drill Deeper
 Abandonment -3-24-75

STEVEN DUCKWORTH
 Company ~~WEST VIRGINIA GAS CORPORATION~~
 Address ~~401 UNION BLDG, CHARLESTON, WVA~~
 Farm F.T. HUFFMAN ET AL.
 Tract _____ Acres 20 Lease No. 363-673
 Well (Farm) No. ONE Serial No. 0-43
 Elevation (Spirit Level) 906.6
 Quadrangle KENNA
 County JACKSON District RIPLEY
 Engineer Robert F. Hyde
 Engineer's Registration No. 646
 File No. 150 Drawing No. _____
 Date JULY 22, 1941 Scale 1 INCH = 200 FEET

STATE OF WEST VIRGINIA
 DEPARTMENT OF MINES
 OIL AND GAS DIVISION
 CHARLESTON

WELL LOCATION MAP
 FILE NO. JAC-93-P

+ Denotes location of well on United States Topographic Maps, scale 1 to 62,500, latitude and longitude lines being represented by border lines as shown.

- Denotes one inch spaces on border line of original tracing.

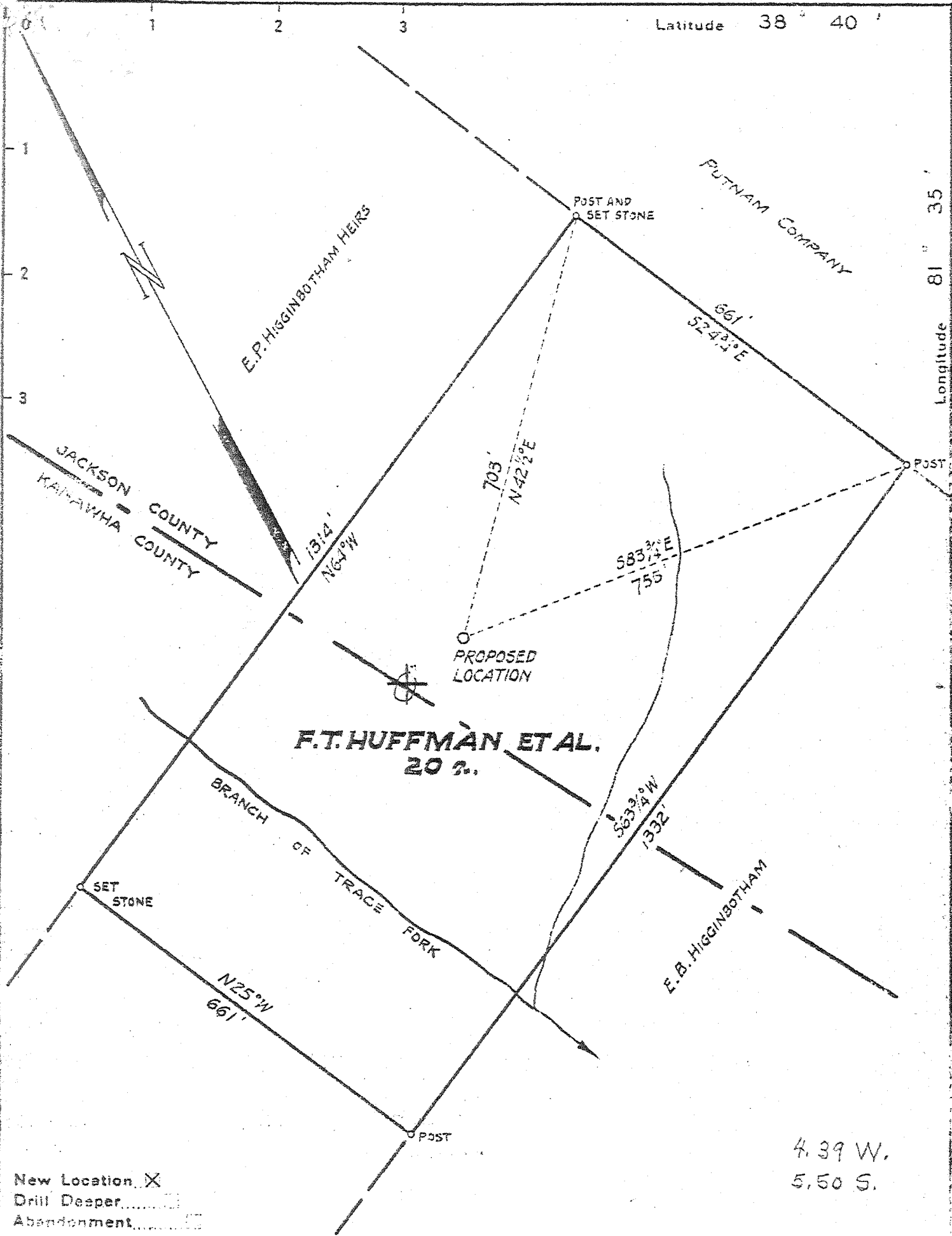
47-035

Deep Well

APR 7 1975

Latitude 38° 40'

Longitude 81° 35'



Company WEST VIRGINIA GAS CORPORATION
 Address 401 UNION BLDG., CHARLESTON, W.VA.
 Farm F.T. HUFFMAN ET AL.
 Tract _____ Acres 20 Lease No. 363-673
 Well (Farm) No. ONE Serial No. 0-43
 Elevation (Spirit Level) 906.6
 Quadrangle KENNA SW
 County JACKSON District RIPLEY
 Engineer Robert F. Hyde
 Engineer's Registration No. 646
 File No. 150 Drawing No. _____
 Date JULY 28, 1941 Scale 1 INCH = 200 FEET

STATE OF WEST VIRGINIA
 DEPARTMENT OF MINES
 OIL AND GAS DIVISION
 CHARLESTON

WELL LOCATION MAP
 FILE NO. JAC-93

+ Denotes location of well on United States Topographic Maps, scale 1 to 62,500, latitude and longitude lines being represented by border lines as shown.

- Denotes one inch spaces on border line of original tracing.

6-6-49

WEST VIRGINIA DEPARTMENT OF MINES
OIL & GAS DIVISION
W E L L R E C O R D

Permit No. Jac-93
Kenna S. W. Quad.

Gas Well

		CASING & TUBING
Company	West Virginia Gas Corp.	16 OD 21-6 21-6
Address	Box 404, Union Bldg., Charleston, W.Va.	10-3/4 894-6
Farm	F. T. Huffman ACRES 20	8-5/8 2140 2140
Well No.	1 - Serial #0-43 ELEV. 910.3	7 5116-1 5116-1
District	Ripley - Jackson County	2 517C 5170
Surface & Mineral	F.T.Huffman, Sissonville, W. Va.	
Commenced	Aug. 21, 1940	1 - 8-5/8 steel casing shoe
Completed	Nov. 10, 1940	1 - 7" casing shoe
Shot	Not shot	1 - OCT Xmas Tree Comp.
Open Flow	20/10ths Water in 7" OD 22#	
Volume	7,117,000 c.f.	
Rock Pressure	-	125 bags cement behind
Fresh Water	910	8-5/8 csg. 20 bags
Salt Water	1590	cement behind 7" csg.

Surface	0	23
Red Rock	23	120
White Slate	120	160
Red Rock	160	205
White Slate	205	220
Red Rock	220	315
Blue Slate	315	330
Sand	330	350
Blue Slate	350	425
Red Rock	425	440
Slate	440	500
Red Rock	500	570
Slate	570	590
Red Rock	590	665
Slate	665	725
Sand	725	745
Slate	745	750
Red Rock	750	770
Sand	770	835
Blue Slate	835	875
Sand	875	1035
Blue Slate	1035	1120
Sand	1120	1190
Slate & Shells	1190	1538
Salt Sand	1538	1940
Big Lime	1940	2048
Sand (Big Injun)	2048	2082
Slate & Shells	2082	2111
Sand - <i>Squaw</i>	2111	2131
Slate	2131	2490
Brown Shale	2490	2505
Berea Sand	2505	2514
Slate Shells	2514	4000
Brown Shale <i>-441</i>	4000	4088
White Slate	4088	4165
Brown Shale	4165	4300
Slate	4300	4785
Brown Shale	4785	5054
Corniferous Lime <i>-463</i>	5054	5158
Criskany Sand	5158	5175 1/2
Total Depth	<i>475</i>	5175 1/2

TESTS:	5161-63 (10:45 A.M. 11-10-40)	12/10W 7" O.D. 22#	1494M
	5168-67 (1:30 P.M. ")	18/10 W. 7" " "	1631M
	5167-73 (2:30 " ")	40/10 W 7" " "	2726M
	(2:45 " ")	18/10 Hg 7" " "	6755M
	(3:10 " ")	24/10 Hg 7" " "	7797M
	5173-74 1/2 (5:20 " ")	20/10 Hg 7" " "	7117M

Water 910, 1590
Gas show 4140