

New Location
 Drill Deeper
 Abandonment 4/5/78

Company Edison J. Parsons
 Address PO Box 86-119 HIGHLAWN Dr. Ripley WV 25271
 Farm F.L. HOCKENBERRY ET AL
 Tract _____ Acres 37 1/2 Lease No. OV404
 Well (Farm) No. ONE Serial No. 049
 Elevation (Spirit Level) 945.7
 Quadrangle KENNA SW WC
 County JACKSON District RIPLEY
 Engineer Robert S. Hyde
 Engineer's Registration No. 646
 File No. 3 Drawing No. WO353
 Date DEC. 5, 1940 Scale 1 INCH = 660 FEET

STATE OF WEST VIRGINIA
 DEPARTMENT OF MINES
 OIL AND GAS DIVISION
 CHARLESTON

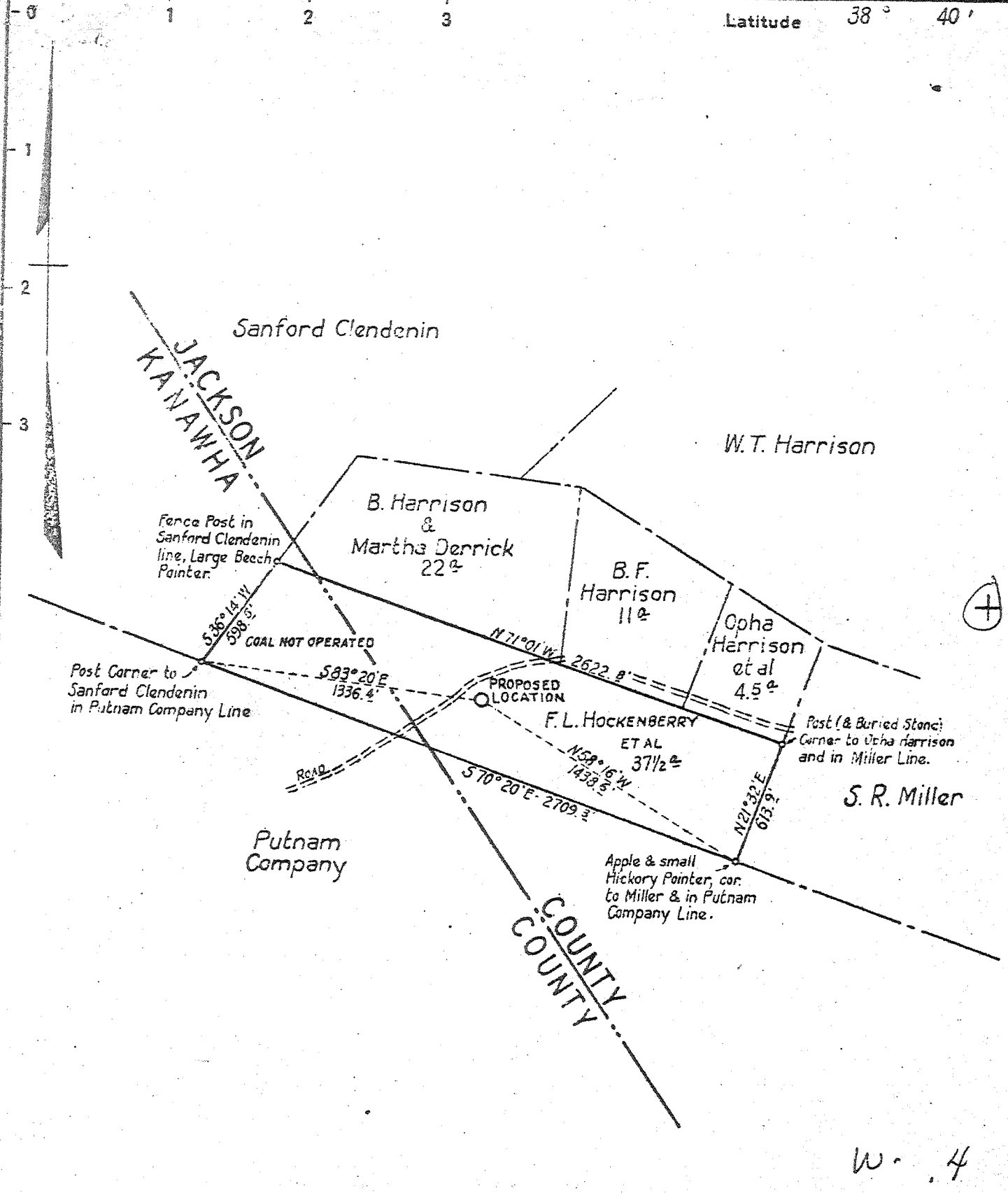
WELL LOCATION MAP
 FILE NO. JAC-109-P

+ Denotes location of well on United States Topographic Maps, scale 1 to 62,500, latitude and longitude lines being represented by border lines as shown.

- Denotes one inch spaces on border line of original tracing.

47-035 APR 13 1978

Deep Well



New Location...
 Drill Deeper...
 Abandonment...

Company	WEST VIRGINIA GAS CORPORATION		
Address	401 UNION BLD'G., CHARLESTON, W. VA.		
Farm	F. L. HOCKENBERRY ET AL		
Tract	Acres	Lease No.	
	37 1/2	OV404	
Well (Farm) No.	Serial No.		
ONE	049		
Elevation (Spirit Level)	945.7'		
Quadrangle	KENNA W.C		
County	District		
JACKSON	RIPLEY		
Engineer	Robert S. Hyde		
Engineer's Registration No.	646		
File No.	Drawing No.		
3	W0353		
Date	Scale		
DEC. 5, 1940	1 INCH = 660 FEET		

STATE OF WEST VIRGINIA
 DEPARTMENT OF MINES
 OIL AND GAS DIVISION
 CHARLESTON

WELL LOCATION MAP
 FILE NO. JAC-109

+ Denotes location of well on United States Topographic Maps, scale 1 to 62,500, latitude and longitude lines being represented by border lines as shown.

- Denotes one inch spaces on border line of original tracing.

6-4-192



WEST VIRGINIA DEPARTMENT OF MINES
OIL & GAS DIVISION
W E L L R E C O R D

Permit No. Jac-109
Kenna Quad.

Gas Well

Company West Virginia Gas Corp.
Address 401 Union Bldg., Charleston, W. Va.
Farm F. L. Hockenberry, et al ACRES -
Location Headwaters Spicewood Branch
Well No. 1 - Serial 0-49 ELEV. 950-4 rig.flr.
District Ripley - Jackson County
Surface J.A.Harrison & F.L.Hockenberry,
Route 1, Kenna, W. Va.
Mineral Harrison & Hockenberry, et al
Commenced Dec. 26, 1940
Completed Mar. 14, 1941
Open Flow 103/10ths W in 7" 22#
Volume 16,150,000 c.f.
Rock Pressure 1370 lbs. - hrs.
Water -

CASING & TUBING

16	21-6	21-6
10	983-9	
8-1/4	2188	2188
7	5126	5126

Perf. top - 5178
" bot. - 5184

125 bags cement behind
10" casing
20 bags cement behind
7" casing

Surface	15	
Rod Rock	15	145
Sand	145	155
Red Rock	155	225
Slate	225	235
Red Rock	235	350
Slate	350	400
Red Rock	400	450
Slate & Shells	450	595
Red Rock	595	750
Slate & Shell	750	812
Sand	812	850
Red Rock	850	910
Slate	910	948
Sand	948	1040
Slate & Shell	1040	1175
Sand	1175	1235
Black Slate	1235	1260
Sand	1260	1335
Slate&Shells	1335	1383
Sand	1383	1410
Slate	1410	1428
Black Limo	1428	1450
Slate	1450	1510
Sand	1510	1530
Slate	1530	1590
Salt Sand	1590	1983
Big Limo	1983	2064
Big Injun	2064	2104
Slate	2104	2109
Sand - <i>Squaw?</i>	2109	2138
Slate	2138	2150
Lime	2150	2180
Slate & Shells	2180	2548
Berea	2548	2562
Slate & Shells	2562	3800
Brown Shale	3800	4350
White Slate	4350	4790
Brown Shale	4790	5068
Corniferous Lime <i>463</i>	5068	5174
Oriskany Sand	5174	5187
Total Depth	5187	

475

Gas 5176-5177 test 16/10 W 7" (O.D.22#) 1,726 M
Gas 5177-5187 " 103/10 W 7" (") 16,150 M
Final R.P. 1370#