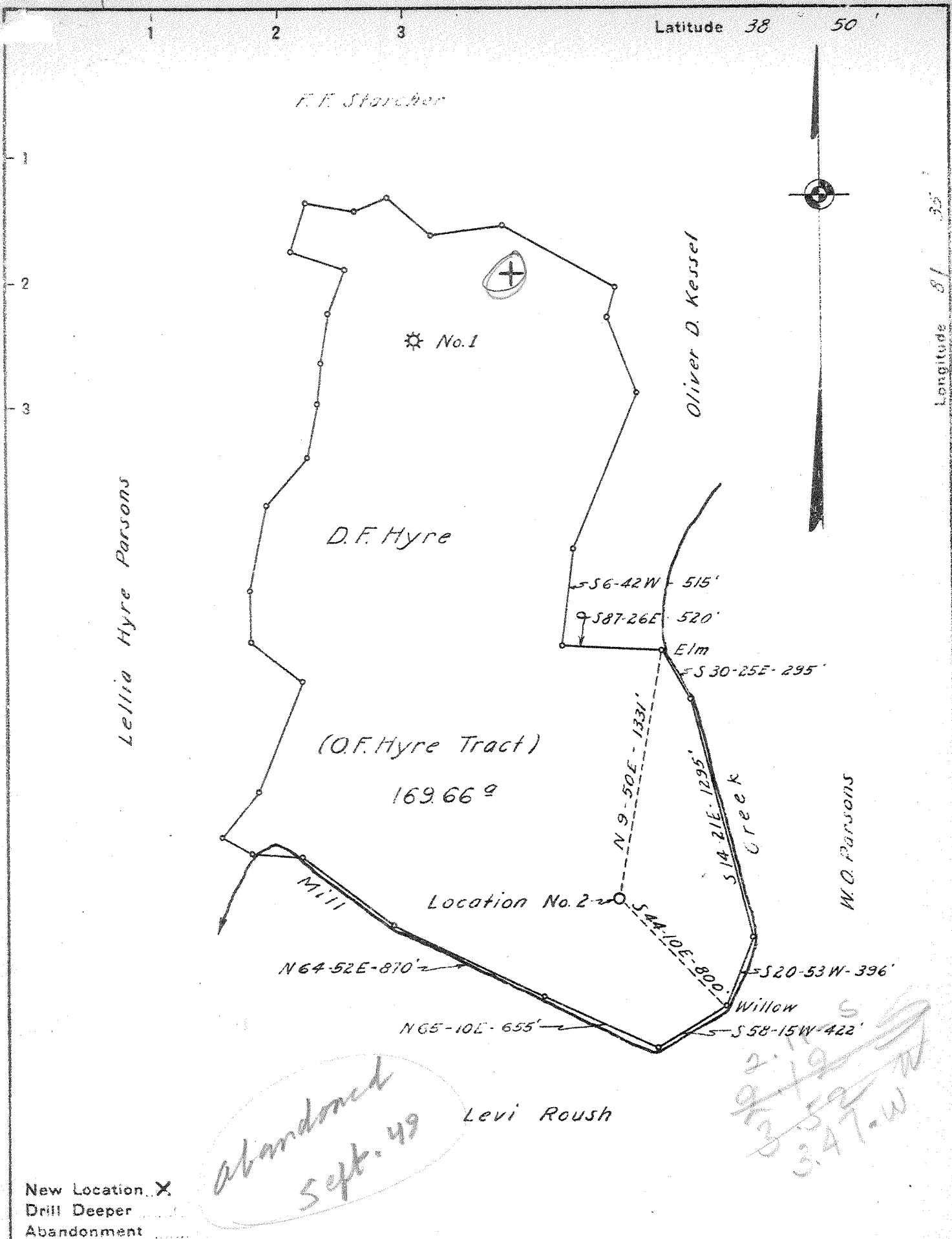


M

Latitude 38 50



New Location X
 Drill Deeper
 Abandonment

*Abandoned
Sept. 49*

*2.15 S
9/10
3/50
3.47-W*

Company United Carbon Co.
 Address Charleston, W.Va.
 Farm D.F. Hyre
 Tract 169.66^a Acres 483.44 Lease No. 2859
 Well (Farm) No. 2 Serial No. 960
 Elevation (Spirit Level) 645
 Quadrangle Ripley SC
 County Jackson District Ripley
 Engineer E.G. Withrow
 Engineer's Registration No. _____
 File No. _____ Drawing No. _____
 Date July 21, 1941 Scale 1" = 660'

STATE OF WEST VIRGINIA
 DEPARTMENT OF MINES
 OIL AND GAS DIVISION
 CHARLESTON

WELL LOCATION MAP
 FILE NO. JAC-184

+ Denotes location of well on United States Topographic Maps, scale 1 to 62,500, latitude and longitude lines being represented by border lines as shown.

- Denotes one inch spaces on border line of original tracing.

6-6-42

WEST VIRGINIA DEPARTMENT OF MINES
OIL & GAS DIVISION
W E L L R E C O R D

Permit No. Jac. 184		Gas Well
Company	United Carbon Co.	Casing & Tubing
Address	United Carbon Bldg. Charleston, W. Va.	
Farm	D. F. Hyre Acres 483,44	13 3/8 607 Pulled
Location	Mill Creek	10 1/2 990 990
Well No	2 Elev. 645'	8 5/8 1942 1942
District	Ripley Jackson County	7 4859 4859
Surface	Opie F. Hyre, Ripley, W. Va.	2 3/8 5002
Mineral	Opie F. Hyre et al, "	
Commenced	Aug. 8, 1941	
Completed	Dec. 3, 1941	
Shot	12-3-41 Depth 4962-5002'	CASING CEMENTED:
Flow	72/10ths M in 7" O.D.	8-5/8" casing, 733'
Volume	13,063,000 C.F.	on 10-6-41.
Rock Pressure	1800 lbs. 24 hrs.	7" casing (O.D.), 215'
Fresh Water	140' 780'	on 11-15-41
Salt Water	1230'	

Coal----775'

Clay	0	30	Slate & Shells	2700	3600
Sand	30	60	Brown Shale	3600	3700
Slate	60	110	Slate & Shells	3700	3850
Red Rock	110	125	Br. Shale	3850	4180
Sand	125	155	Wh. Slate	4180	4610
Slate	155	180	Br. Shale	4610	4844
Sand	180	193	Corniferous - 463	4844	4959
Red Rock	193	215	Criskany Sand	4959	5010
Slate	215	220	Lime - 485	5010	5016
Red Rock	220	235	TOTAL DEPTH		5016
Lime	235	255			
Red Rock	255	300			
Slate	300	310	Well shot on 14' anchor.		
Red Rock	310	338			
Slate	338	375			
Red Rock	375	385			
Slate	385	400			
Sand	400	447			
Slate	447	545			
Sand	545	590			
Red Rock	590	610			
Slate	610	622			
Red Rock	622	650			
Sand	650	665			
Red Rock	665	750			
Sand	750	770			
Slate	770	775			
Coal	775	780 W. 780 l bailer full			
Slate	780	790			
Sand	790	805			
Slate	805	840			
Red Rock	840	870			
Sand	870	880			
Slate	880	1025			
Sand	1025	1120			
Slate	1120	1130			
Sand	1130	1190			
Slate	1190	1210			
Salt Sand	1210	1325 W. 1230 Hole Full			
Slate	1325	1335			
Sand	1335	1345			
Slate	1345	1530			
Lime	1530	1550			
Slate	1550	1555			
Sand	1555	1690			
Slate	1690	1710			
Maxon Sand	1710	1730			
Big Lime	1730	1855			
Injun Sand	1855	1890			
Slate	1890	1895			
Sand - Squaw	1895	1916			
Slate & Shells	1916	2300			
Borea Shells	2300	2700 Gas 1315 Show			

62315? 2000 5/6