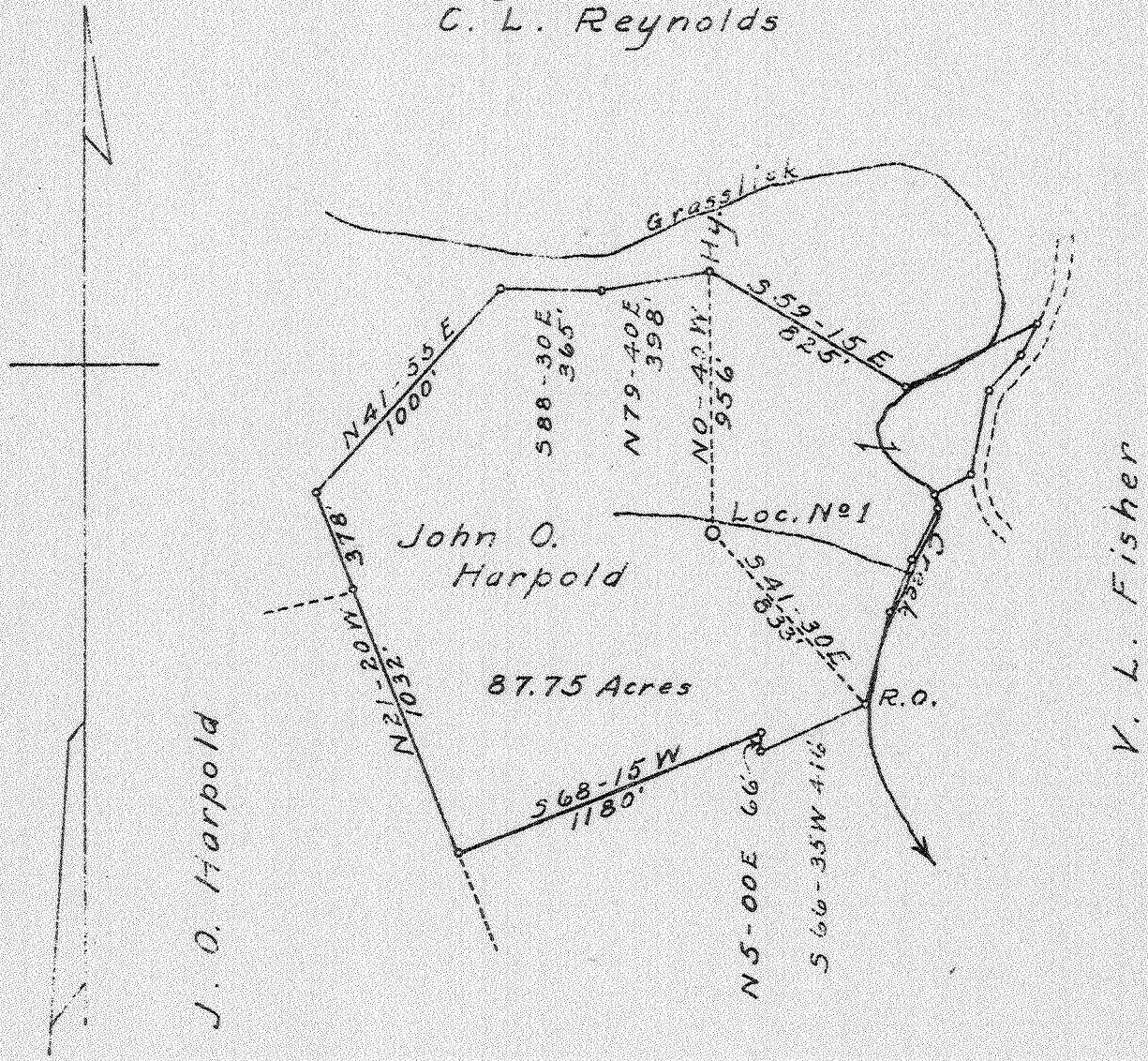



C. L. Reynolds



Clate Shamblin

Handwritten notes:
ABD
8/46
138-5
4/4
4.3
A.28-W

New Location X
Drill Deeper
Abandonment

Company United Carbon Co.
 Address Charleston, W. Va.
 Farm John O. Harpold
 Tract Acres 87.75 Lease No. 2460
 Well (Farm) No. 1 Serial No. 961
 Elevation (Spirit Level) 766
 Quadrangle Kenna NC
 County Jackson District Ripley
 Engineer E. G. Withrow
 Engineer's Registration No. _____
 File No. _____ Drawing No. _____
 Date July 18, 1941 Scale 1" = 660'

STATE OF WEST VIRGINIA
DEPARTMENT OF MINES
OIL AND GAS DIVISION
CHARLESTON

WELL LOCATION MAP
FILE NO. JAC-185

+ Denotes location of well on United States Topographic Maps, scale 1 to 62,500, latitude and longitude lines being represented by border lines as shown.

- Denotes one inch spaces on border line of original tracing.

Handwritten: 66 192

WEST VIRGINIA DEPARTMENT OF MINES
OIL & GAS DIVISION
W E L L R E C O R D

Permit No. JAC-185

Company United Carbon Company
 Address Charleston, W. Va.
 Farm J. O. Harpold Acres 88
 Location Grass Lick Creek 16
 Well No. 1-961 Elev. 766
 District Ripley, W. Va. Jackson County
 Surface J. O. Harpold, Kenna, W. Va.
 Mineral Same
 Commenced 8- 8-41
 Completed 12-14-41
 Shot 12-15-41 Depth of shot 5053-5058
 with 70 Qts. Glyc.
 Flow 44/10ths W. in 7"24"
 Volume 2,807,000 CF
 Rock Pressure 1860 lbs. 48 hrs.
 Fresh water 1350' 1#Bailer
 Salt water 1610' H.F.

Gas Well
 Casing & Tubing
 13" 572 000
 10 3/4" 980 980
 8 5/8" 2033 2033
 7 4960 4960
 2 3/8" 5085 5085

Casing Cemented
 8 5/8" 685"

Red Rock	0	30	Sand - <i>SQUAW</i>	2005	2030
Sand	30	75	Slate	2030	2403
Slate	75	85	Brn - <i>Berea</i>	2403	2418
Red Rock	85	100	Slate & Shells	2418	2950
Sand	100	180	Wh. Slate	2950	3640
Red Rock	180	200	Br. Shale - <i>441</i>	3640	3960
Slate	200	230	Wh. Slate	3960	3700
Sand	230	240	Slate & Shells	3700	3890
Red Rock	240	250	Br. Shales	3890	4025
Slate	250	320	Wh. Shales	4025	4600
Sand	320	330	Br. Shake	4600	4875
Red Rock	330	340	Slate	4875	4895
Slate	340	405	Blk. Shale - <i>NARMSVILLE</i>	4895	4945
Sand	405	435	Cornf. Limc - <i>465</i>	4945	5050
Slate	435	545	Orisk. Sand	5050	5100
Sand	545	582	Lime	5100	5112
Pink Rock	582	595	Sand <i>4122</i>	5112	5132
Slate	595	605	Lime	5132	
Red Rock	605	620	Total Depth		5145
Slate	620	650			
Sand	650	665			
Red Rock	665	675			
Slate	675	685			
Red Rock	685	725			
Sand	725	740			
Red Rock	740	760			
Slate & Shells	760	1040			
Sand	1040	1105			
Slate	1105	1135			
Sand	1135	1185			
Slate	1185	1205			
Sand	1205	1300			
Slate	1300	1305			
Sand	1305	1400			
Slate	1400	1430			
Sand	1430	1445			
Slate & Shells	1445	1590			
Salt Sand	1590	1860			
Big Lime	1860	1940			
Injun Sand	1940	2004			
Slate	2004	2005			

Gas 2405 Show