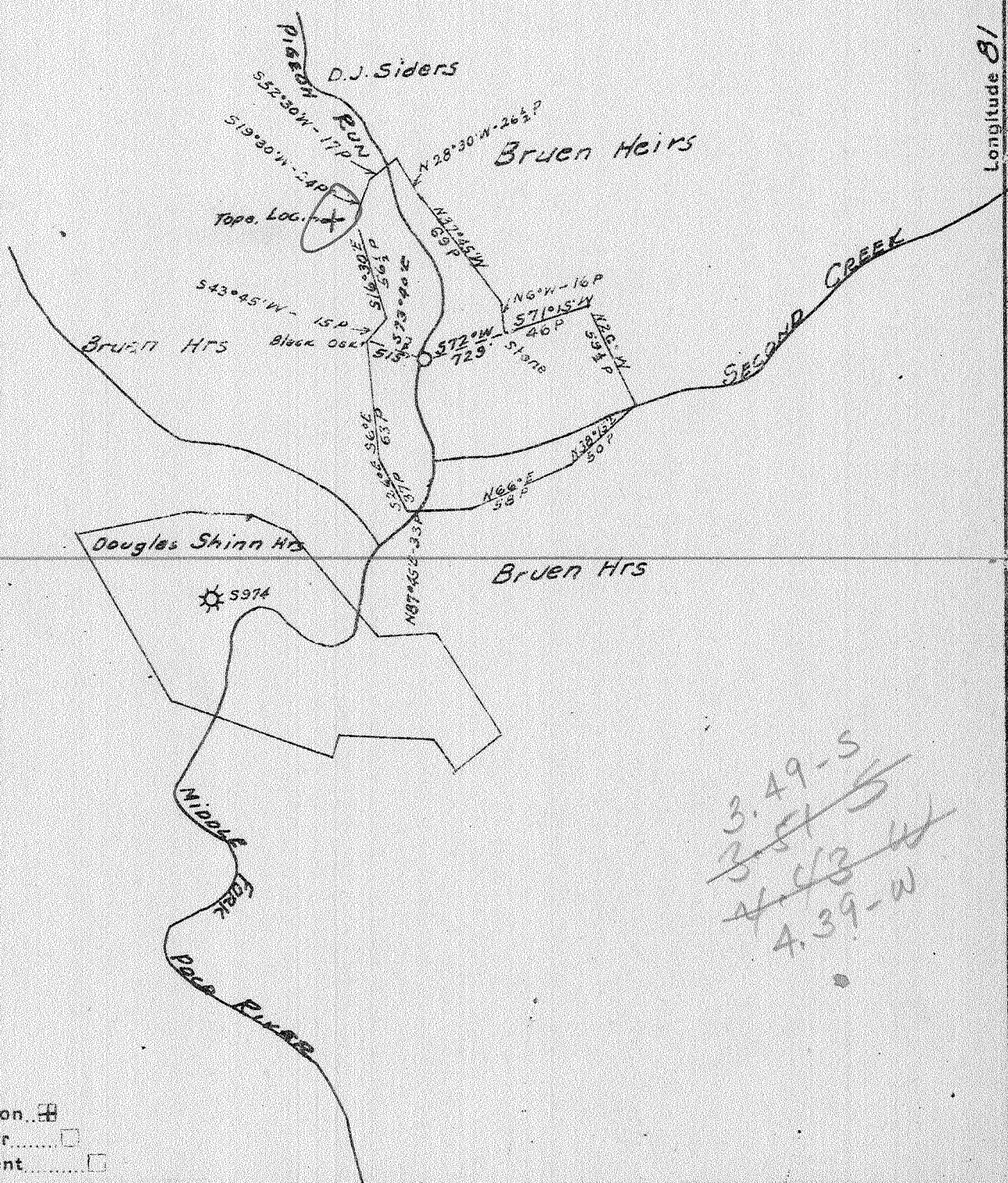


Latitude 38° 40'

Longitude 81° 30'



3.49-S  
 3.51-S  
 4.43-W  
 4.39-W

- New Location
- Drill Deeper
- Abandonment

Company GODFREY L. CABOT INC  
 Address 900 UNION BLDG. CHARLESTON W.V.A.  
 Farm Rector Courts  
 Tract \_\_\_\_\_ Acres 95 Lease No. \_\_\_\_\_  
 Well (Farm) No. 1 Serial No. 1015  
 Elevation (Spirit Level) 681.36  
 Quadrangle Manna EC  
 County Jackson District Washington  
 Engineer Paul's Stum  
 Engineer's Registration No. 975  
 File No. \_\_\_\_\_ Drawing No. \_\_\_\_\_  
 Date 10-6-41 Scale 1"=132.0'

STATE OF WEST VIRGINIA  
 DEPARTMENT OF MINES  
 OIL AND GAS DIVISION  
 CHARLESTON

WELL LOCATION MAP  
 FILE NO. JAC-224

- + Denotes location of well on United States Topographic Maps, scale 1 to 62,500, latitude and longitude lines being represented by border lines as shown.
- Denotes one inch spaces on border line of original tracing.



WEST VIRGINIA DEPARTMENT OF MINES  
OIL & GAS DIVISION  
WELL RECORD

Permit No. Jac-224  
Company  
Address  
Farm  
Well No.  
Location  
District  
Commenced  
Completed  
Flow  
Volume  
Rock Pressure  
Fresh Water

Godfrey L. Cabot, Inc.  
Charleston, W. Va.  
Rector Counts      Acres  
1    Sor 1015              Elev. 681.36  
  
Washington      Jackson County  
Nov. 10, 1941  
March 23, 1942  
After completion of drilling  
5 MCF  
Not taken  
30-40 Couldn't bail down; 40-60  
more water; 135-165 Little more water;  
165-190 About enough to drill; 190-245  
2 blrs. pr. hr.;  
Hole filled up at 1350; (1585-1625) Water  
level 163;

Dry Hole  
CASING & TUBING  
13 3/8 125 125  
10 671 671  
8 5/8 1883 1883  
7 4928 4928

1-3 1/2 B.H. Packer; 40  
sacks aquagel.  
1-7" O.D. Sp. Orisk.  
Packer; 38 sacks  
aquagel and 4 bags  
fibertex.

Salt Water

Conductor	16	Slate & Shells	1920	2215
Clay	0 30	Shale - coffee gr.	2215	2225
Sand	30 40	Berea Shells	2225	2400
Red Rock	40 60	Slate & Shells	2400	3445
Sand	60 72	Brown Shale	3445	3500
Slate	72 90	Slate & Shells	3500	3885
Sand	90 104	Brown Shale	3885	4120
Red Rock	104 120	White Slate	4120	4570
Slate	120 135	Brown Shale	4570	4822
Sand	135 165	White Slate	4822	4850
Red Rock	165 190	Black Shale - MARCELLUS	4850	4908
Slate	190 245	Corniferous Lino - 463	4908	5037
Sand	245 275	Oriskany Sand	5037	5079
Slate	275 285	Lime	5079	5089
Red Rock	285 300	Sand	5089	5094
Sand	300 320	Lime	5094	5102
Red Rock	320 330	Sand	5102	5117
Slate	330 345	Lime	5117	5129
Red Rock	345 385	TOTAL DEPTH		5129
Slate	385 450			
Lime	450 475	Show gas 3480		
Slate	475 515	Gas 3967 No test		
Sand	515 555	Top gas and water 5061		
Red Rock	555 570	Gas no test		
Slate	570 585	Water test 16 gals in 1 hr.		
Red Rock	585 596	Water test 2 blrs. - 3 hrs.		
Slate	596 620			
Sand	620 630	S.L.M. 4928 and 5046		
Slate & Shells	630 660			
Sand	660 680	GAUGES IN ORISKANY SAND		
Slate	680 695	3-1-42 5037 No gas (top sand)		
Sand	695 765	3-2-42 5046 "		
Slate	765 790	3-5- 5061-63 8 M (2 blrs. W in 2 Hrs.)		
Sand	790 840	3-9 5064 8 M (1 1/2 blrs. W in 2 hrs.)		
Slate & Shells	840 890	3-12 5075 6 M 1 1/2 Blrs. W in 2 hrs.)		
Sand	890 910	3-13 5082 6 M " " " " "		
Slate	910 918	3-19 5104 6 M " " " " 2 1/2 hrs		
Sand	918 940	3-22 5118 5 M " " " " "		
Slate & Shells	940 995	3-23 5129 5 M " " " " "		
Sandy Lime	995 1140			
Slate	1140 1215			
Salt Sand	1215 1583			
Slate Break	1583 1585			
Maxon	1585 1625			
Little Lime	1625 1653			
Big Lime	1653 1800			
Injun Sand	1800 1830			
Slate	1830 1878			
Lime Shells	1878 1900			
Slate	1900 1920			

4908 5037 5079  
681 681 681  
4227 4356 4398