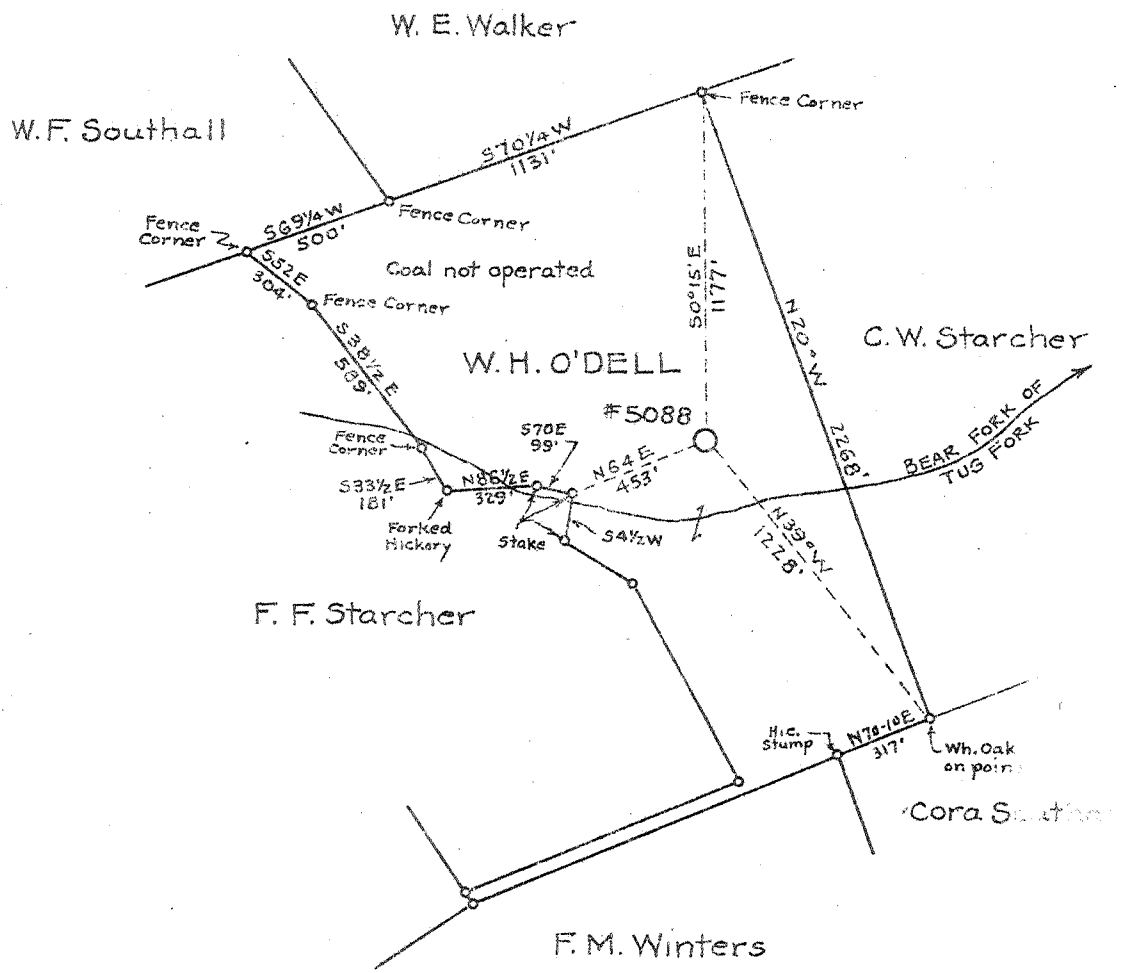


Latitude 38° 45'

Longitude 81° 35'



*Abandoned
- Feb. 50*

*0.35
3.60
3.56-W*

New Location X
 Drill Deeper
 Abandonment

Company UNITED FUEL GAS CO.
 Address CHARLESTON, W. VA.
 Farm W. H. O'DELL (JOHN ROBIE)
 Tract _____ Acres 60 Lease No. 44058
 Well (Farm) No. 1 Serial No. 5088
 Elevation (Spirit Level) 874.8
 Quadrangle KENNA NC
 County JACKSON District WASHINGTON
 Engineer G. A. [Signature]
 Engineer's Registration No. 659
 File No. 60-85 Drawing No. _____
 Date DEC. 17, 1941 Scale 1" = 660'

STATE OF WEST VIRGINIA
 DEPARTMENT OF MINES
 OIL AND GAS DIVISION
 CHARLESTON

WELL LOCATION MAP
 FILE NO. JAC - 270

+ Denotes location of well on United States Topographic Maps, scale 1 to 62,500, latitude and longitude lines being represented by border lines as shown.

- Denotes one inch spaces on border line of original tracing.

WEST VIRGINIA DEPARTMENT OF MINES
OIL & GAS DIVISION
W E L L R E C O R D

Permit No. Jac-270		Gas Well		
Company	United Fuel Gas Co.	CASING & TUBING		
Address	Charleston, W.Va.	13	766	Pulled
Farm	W.H.O'Dell Acres 60	10	1354	"
Location	Bear Fork of Tug Fork	8½	2163	2163
Well No.	5088 Elev. 874.8	7	5136	5136
District	Washington Jackson County 2			5220
Surface	John Robie, Staats Mills, W.Va.			
Mineral	W.H. O'Dell, Charleston, W.Va.			
Commenced	Feb. 12, 1942			
Completed	May 8, 1942			
Not Shot				
Volume	Gas Well 11,255 Mcf - Vol XVI			
Fresh Water	290' and 700'			
Salt Water	1120' & 1720-1750'			

Surface	0	14	Berea Sand	2518	2523
Sand	14	25	Slate & Shells	2523	3750
Red Rock	25	35	Brown Shale - 441	3750	3800
Sand	35	55	Slate & Shells	3800	4035
Red Rock	55	125	Brown Shale	4035	4185
Slate	125	140	White Slate	4185	4230
Sand	140	170	Brown Shale	4230	4340
Slate	170	190	White Slate	4340	4780
Red Rock	190	200	Brown Shale	4780	4880
Slate	200	210	White Slate	4880	4923
Red Rock	210	225	Brown Shale	4923	5000
Sand	225	300	Black Shale - MARCELLUS	5000	5072
Red Rock	300	315	Corniferous Lime - 413	5072	5183
Sand	315	337	Oriskany Sand	5183	5194
Red Rock	337	365	TOTAL DEPTH		5194
Sand	365	385			
Slate	385	453	Gas Pay 5184-5192		
Red Rock	453	463			
Sand	463	510			
Red Rock	510	527			
Sand	527	547			
Slate & Shells	547	674			
Sand	674	715			
Red Rock	715	770			
Sand	770	790			
Red Rock	790	860			
Slate	860	960			
Sand	960	980			
Slate & Shells	980	1100			
Sand	1100	1227			
Slate	1227	1250			
Sand	1250	1290			
Black Slate	1290	1335			
Sand	1335	1430			
Black Slate	1430	1470			
Sand	1470	1515			
Slate	1515	1715			
Salt Sand	1715	1900			
Slate	1900	1902			
Maxon Sand	1902	1925			
Slate	1925	1927			
Big Lime	1927	2027			
Slate	2027	2030			
Injun	2030	2130			
Slate	2130	2142			
Lime Shells	2142	2148			
Slate & Shells	2148	2506			
Brown Shale	2506	2518			