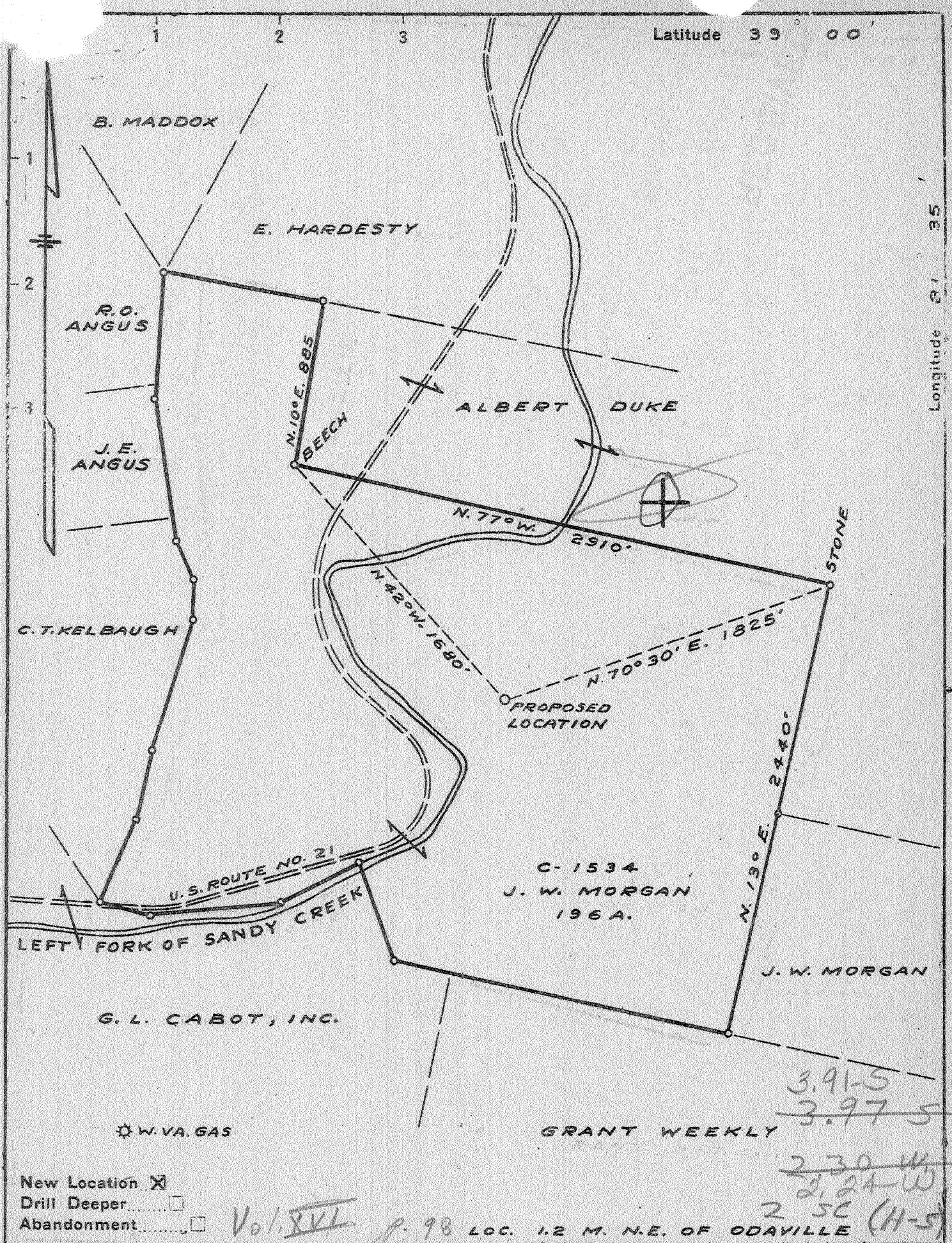


P



- New Location
- Drill Deeper
- Abandonment

Vol. XVI p. 98 LOC. 1.2 M. N.E. OF ODAYVILLE (H-5)

Company	COLUMBIAN CARBON CO.
Address	BOX 1240 CHARLESTON W.VA.
Farm	J. W. MORGAN
Tract	Acres <u>196</u> Lease No. <u>C-1534</u>
Well (Farm) No.	<u>ONE</u> Serial No. _____
Elevation (Spirit Level)	<u>626.2</u>
Quadrangle	<u>RIPLEY NW 2 - NC</u>
County	<u>JACKSON</u> District <u>RAVENSWOOD</u>
Engineer	<u>J. M. Bell</u>
Engineer's Registration No.	<u>772</u>
File No.	_____ Drawing No. <u>170</u>
Date	<u>MARCH 17, 42</u> Scale <u>1" = 660'</u>

STATE OF WEST VIRGINIA
DEPARTMENT OF MINES
OIL AND GAS DIVISION
CHARLESTON

WELL LOCATION MAP
FILE NO. JAC-319

- + Denotes location of well on United States Topographic Maps, scale 1 to 62,500, latitude and longitude lines being represented by border lines as shown.
- Denotes one inch spaces on border line of original tracing.

6-6-1942 Deep Well

WEST VIRGINIA DEPARTMENT OF MINES
OIL & GAS DIVISION
WELL RECORD

Permit No. Jac 319

Company	Columbian Carbon Company	Gas Well
Address	Box 873, Charleston, W.Va.	CASING & TUBING
Farm	J.W. Morgan Acres 196	16 60'11 20'11
Location	Left Fork of Sandy Creek	13 3/8 617'7 0
Well No	1 (G.W.-662) Elev. 631.1 DF	10 1107'6 0
District	Ravenswood Jackson County	8 5/8 1995' 0
Surface	J.W. Morgan et ux, Sandyville, W.Va.	7 4886'10 4886'10
Mineral	---	2 3/8 5027'6 5027'6
Commenced	6-9-42	3 1/2 91'8 91'8
Completed	8-18-42	Packor---none
Date shot	8-18-42 Depth 4952 SLM-4992SLM with 266-2/3# Gelatin	

Volume 4213 MCF
 Rock Pressure 1450# 28 hrs.
 Fresh Water 57 H.F.; 248-60 3 blrs. in 10 hrs.
 485' 3-13" blrs. pr. hr.; 550' 6-13"
 Blrs. pr. hr.;
 Salt Water 2-10" blrs. pr. hr.; 1590' H.F.

Red Clay	0	40	Sand	1500	1516
Gray Shale	40	55	Black Slate & Shells	1516	1580
Red Rock	55	130	Sand	1580	1645
Gray Slate	130	138	Settling Sand	1645	1694
Sand	138	180	Slate	1694	1701
Gray Slate	180	210	Sand	1701	1708
Red Rock	210	248	Big Lime	1708	1842
Sand	248	260	White Slate	1842	1850
Blue Shale	260	296	Big Injun Sand	1850	1965
Red Rock	296	305	Black Slate	1965	1966
Blue Shale	305	328	Black Lime	1966	1983
Sand	328	360	Gray Lime	1983	2013
Red Rock	360	395	Slate & Shells	2013	2295
Grey Slate	395	412	Dark Shale	2295	2322
Pittsburgh Sand	412	430	Gritty Shells	2322	2390
Red Rock	430	468	Slate & Shells	2390	3580
Gray Shale	468	483	Brown Shale - 441	3580	3600
Sand	483	570	White Slate	3600	3830
Blue Slate	570	591	Brown Shale	3830	3930
Shell	591	602	White Slate	3930	3965
Red Rock	602	607	Brown Shale	3965	4110
Shell	607	610	White Slate	4110	4550
Blue Shale	610	695	Brown Shale	4550	4625
Red Rock	695	742	Black Shale	4625	4730
Gray Slate	742	765	White Slate	4730	4735
Red Rock	765	796	Black Shale - MARCELLUS	4735	SLM 4839
Grey Slate & Shells	796	870	Corniferous Lime - 463	SLM 4839	SLM 4952
Lime	870	882	Oriskany Sand	SLM 4952	5007
Red Rock	882	900	Lime	5007	5012
Lime Shells	900	978	Oriskany Sand	5012	5019
Black Slate	978	995	Lime	5019	5024
White Slate	995	1004	Oriskany Sand	5024	5038
Lime	1004	1035	Lime	5038	SLM 5044
Dunkard Sand	1035	1094	TOTAL DEPTH	485	SLM 5044
Green Shale	1094	1103	Gas 1933 Showed thru water		
Lime Shell	1103	1113	Oil show 4988-90		
Sand	1113	1205	PAYS: 4953-58; 4988-90		
Blue Shale	1205	1230			
Sand	1230	1286			
Slate	1286	1320	CEMENT RECORD:		
White Sand	1320	1360	6-17-42 Aquagelled 13 3/8 casing. Ran		
Slate	1360	1408	15 sacks aquagel and 1 bale Fibertox.		
Salt Sand	1408	1495	6-24-42 Aquagelled 10 1/2" casing. Ran 16		
White Slate	1495	1500	sacks aquagel and 1 bale Fibrotex.		
			7-7-42 Aquagelled 8 5/8" casing. Ran		
			24 sacks aquagel and 2 bales Fibrotex.		
			8-2-42 Cemented 7" casing. Ran 7 sacks		
			Superior Cement in dump bailer. Picked		
			up pipe 50' and ran 50 sacks aquagel		
			with 4 bales Fibrotex. 45' cement in hole		